


 CrossMark  
click for updates

 Cite this: *RSC Adv.*, 2017, 7, 13487

# Deformation and failure mechanisms of electrochemically lithiated silicon thin films

 Hansinee Sitinamaluwa,<sup>a</sup> Jawahar Nerkar,<sup>a</sup> Mingchao Wang,<sup>†a</sup> Shanjing Zhang<sup>b</sup> and Cheng Yan<sup>\*a</sup>

A fundamental understanding of mechanical behavior of a Li–Si system is necessary to address the poor mechanical integrity of amorphous silicon (a-Si) electrodes, in order to utilize their enormous capacity in Li-ion batteries. In this work, deformation and failure mechanisms of electrochemically lithiated a-Si thin films were investigated using nanoindentation and molecular dynamics simulation techniques. The cracking observed in the a-Si thin films after the initial lithiation–delithiation cycle is associated with the tension stress developed when constrained by the substrates. The MD simulations provide an atomistic insight on the origin of plasticity and transition of fracture mechanisms with increasing lithium concentration in the electrode. Both experiment and the MD simulations indicate reduced strength, elastic modulus but increased ductility in the a-Si films after the full lithiation–delithiation cycle, as a result of increased disorder in the microstructures. Also, the mapping of void nucleation and growth indicates different failure modes in pristine and delithiated a-Si.

 Received 3rd February 2017  
Accepted 23rd February 2017

DOI: 10.1039/c7ra01399j

[rsc.li/rsc-advances](http://rsc.li/rsc-advances)

## 1. Introduction

Li-ion batteries have been applied to a wide range of energy storage devices, ranging from small battery packs for portable electronic devices to large-scale stationary power management and high-power electrical transportation systems. In order to meet increasing demands, further increases in capacity and efficiency of Li-ion batteries are urgently required.<sup>1,2</sup> To this end, inorganic electrode materials which store lithium *via* alloying mechanisms have attracted increasing attention due to their large theoretical capacity.<sup>3</sup> For currently used graphite anodes, six carbon atoms can host one lithium atom giving a theoretical capacity of 372 mA h g<sup>−1</sup>. In contrast, alloying anodes such as Si, Sn, Al, Mg and Bi have much higher lithium storage capacity compared to graphite.<sup>4</sup> For example, one silicon atom can bond with 3.75 lithium atoms, having a theoretical capacity of 3579 mA h g<sup>−1</sup>.<sup>5</sup> However, electrochemical lithiation of silicon results in enormous volume expansion (about 300%), high mechanical stress and possible material failure, resulting in early capacity decay.<sup>6</sup> Application of nanostructured materials, such as nanoscale thin films, has been confirmed as an effective way to improve the damage tolerance of electrodes.<sup>7–10</sup> Several recent studies indicate that amorphous

silicon shows increased stability compared to its crystalline counterpart.<sup>11,12</sup>

Thin films are relatively easy to fabricate, but one problem is the mechanical stresses induced by geometrical constraints such as substrates, which may result in large mechanical deformation or failure. Reduction of film thickness may improve the damage tolerance and hence improve the long-term cycling stability.<sup>13</sup> To design robust thin film architectures, a fundamental understanding of stresses and mechanical behavior of thin film electrodes is crucially important. Li-induced stress development in silicon thin films has been studied by several researchers.<sup>14–16</sup> Also, mechanical behavior of lithiated silicon has been studied previously; Hertzberg *et al.*<sup>17</sup> and Berla *et al.*<sup>18</sup> used nanoindentation to determine the mechanical properties of electrochemically lithiated amorphous silicon (a-Si) thin films. Wafer curvature technique was also used to measure the mechanical performance of lithiated silicon.<sup>15,19</sup> Recent *ab initio* studies have confirmed that the mechanism of lithiation–delithiation is atomistic in nature, which involves breaking and re-forming of covalent Si–Si bonds.<sup>20–22</sup> Also, atomistic simulations reveal a brittle-to-ductile transition of amorphous Li<sub>x</sub>Si, due to changes in the phase composition during charge–discharge process.<sup>23–25</sup> However, the atomistic mechanisms govern such transition is still unclear. Also, less attention has been paid to understanding the microstructure evolution during the delithiation process, and its effect on the mechanical behavior of delithiated silicon.

To address these issues, we investigated the deformation and failure mechanisms of lithiated a-Si thin films using extensive nanoindentation tests and molecular dynamic simulations. The

<sup>a</sup>School of Chemistry, Physics and Mechanical Engineering, Queensland University of Technology (QUT), Brisbane, QLD 4001, Australia. E-mail: c2.yan@qut.edu.au

<sup>b</sup>Centre for Clean Environment and Energy, Environmental Futures Research Institute and Griffith School of Environment, Gold Coast Campus, Griffith University, QLD 4222, Australia

<sup>†</sup> Current affiliation: Department of Mechanical Engineering, Florida State University, Tallahassee, Florida 32310, USA.



evolution of morphology and mechanical stresses in an a-Si thin film during charging and discharging cycle and their contributions to the deformation and failure mechanisms are discussed in detail. We believe the outcome of this study can benefit the development of robust electrode architectures with improved mechanical and electrochemical performance.

## 2. Methods

### 2.1. Experimental

The a-Si thin films were deposited on polished stainless steel disks. Steel disks were first ground using 1200 grit silicon carbide paper, followed by a Nap-cloth polishing with 1-micron diamond compound. The substrates were thoroughly cleaned by sonicating in ethanol to remove polishing debris. The film deposition was completed using a multi-source RF/DC magnetron sputtering system (Kurt J. Lesker PVD75). We employed a sequential deposition technique for deposition of Ti and Si layers without breaking the vacuum. Initially, a Ti layer ( $\sim 25$  nm) was deposited from high purity Ti target (99.995% pure) by DC sputtering at 100 W and 10 mTorr. Next, amorphous silicon thin film was deposited by RF magnetron sputtering at 60 W and 4 mTorr using undoped silicon target. The substrate holder was allowed to rotate at 20 rpm to keep the uniformity of the films. Prior to the film deposition, a pre-sputtering of 5 min was allowed to remove any surface contamination from the source target and also to stabilize the sputtering conditions. The deposition process was carried out at room temperature.

Surface morphology of thin films was characterized by Scanning Electron Microscopy (SEM) at 5 kV acceleration voltage. Raman measurements were carried out using Renishaw Raman microprobe with 633 nm laser source. For the electrochemical tests, coin cells (CR2032) were assembled using the sputtered silicon films as the working electrode, a Li foil as the counter electrode and a 25  $\mu\text{m}$  thick 2325 Celgard separator membrane (Polypore Company). Electrolyte used is 1.0 M  $\text{LiPF}_6$  in EC/DEC = 50/50 (v/v) (Selectilyte G1, BASF Corporation). Electrochemical tests were carried out using a Bio-Logic VMP-300 electrochemical galvanostat/potentiostat. Galvanostatic charge–discharge tests were performed at a constant current of 0.2  $\mu\text{A}$  (C/10 rate). Lithiation was performed until the cell is discharged to 10 mV vs.  $\text{Li/Li}^+$ , and delithiation was performed by charging the cell to 1.5 V vs.  $\text{Li/Li}^+$ .

For nanoindentation test, thin films with partially and fully lithiated states were prepared by controlling the cell discharge voltage. To prepare fully lithiated thin films, the cells were first discharged to 0.01 V and held at that voltage for additional six hours to complete the lithiation reaction. For the partially lithiated films, the discharge process was terminated at desired voltage level and the cell was allowed to relax at open circuit state for additional six hours. After electrochemical tests, Si/Li cells were disassembled inside a glove box ( $\text{H}_2\text{O}$ : <0.1 ppm;  $\text{O}_2$ : <0.1 ppm) running under an inert atmosphere of high purity Ar gas. Cycled Si electrodes were carefully extracted from the opened cells, followed by quickly rinsing with dimethyl carbonate to remove any residual lithium salt. For SEM analysis, electrodes were mounted on SEM stubs inside the glove box and

transferred in sealed vials, and were loaded into SEM chamber and pumped down within 30 s to minimize oxidation. The lithiated thin films used for mechanical testing were immersed in paraffin oil inside the glove box, prior to transferring to the nanoindenter.

### 2.2. Molecular dynamic simulation

Lithiation–delithiation process of amorphous silicon (a-Si) was investigated using molecular dynamics (MD) simulations. Melt-and-quench scheme was first adopted to create the initial amorphous silicon structure with the dimensions of  $5 \times 5 \times 5 \text{ nm}^3$ .<sup>26</sup> To simulate the lithiation stage, a small amount of lithium was initially distributed in the a-Si cell and the system was fully relaxed in the NPT ensemble at 300 K for 10 ps. This procedure was repeated until the desired Li concentration was reached. To simulate the delithiation stage, a small number of randomly-selected Li atoms were removed from the structure, and the system relaxation was carried out in the NPT ensemble at 300 K for 10 ps. For the calculation of Li-induced stress, the cubic a-Si atomic model of side length 5 nm is considered as a small volume element in a geometrically constrained thin film. During the simulation of lithiation–delithiation, expansion of the cubic a-Si unit is restricted in the  $x$ – $y$  plane (parallel to the substrate plane) but the Li-induced volume expansion is possible along the  $z$  direction (normal to the substrate plane). The bi-axial stress along the  $x$ – $y$  plane during lithium insertion/extraction is calculated using the virial theorem.<sup>27,28</sup> The detailed simulation method is reported elsewhere.<sup>29</sup>

For the uniaxial tension test, cubic models of  $5 \times 5 \times 5 \text{ nm}^3$  were cut out from the lithiated structures followed by equilibration in the NPT ensemble at 300 K for 10 ps. Following the equilibration, the uniaxial tension test was carried out in the simulation cell in  $z$ -direction at a constant strain rate of  $5 \times 10^8 \text{ s}^{-1}$ . Similarly, the triaxial tension test was conducted *via* displacement in all three directions at a constant strain rate of  $5 \times 10^8 \text{ s}^{-1}$ . The virial theorem was used to calculate the atomic stresses during tensile deformation.<sup>27,28</sup> Cavitation (*i.e.* void nucleation and coalescence) in the a-Si cell under the hydrostatic stress was analyzed using the Mercury<sup>30</sup> software. All simulations were performed using the Large-scale Atomic/Molecular Massively Parallel Simulator (LAMMPS).<sup>31</sup> Atomic interactions of a-Si and Li–Si systems were described using modified Stillinger–Weber potential,<sup>32</sup> and MEAM-based inter-atomic potential,<sup>33</sup> respectively.

## 3. Results and discussion

### 3.1. Characterization of thin films

Fig. 1a and b show the SEM images of as-deposited a-Si thin film, *i.e.*, the cross-section and the surface, respectively. The a-Si layer is quite smooth and uniform with a thickness of  $\sim 200$  nm. Small blisters can be observed on the surface, as indicated by the arrows in Fig. 1b. Sputter deposition of Si at room temperature results in an amorphous structure, as confirmed by Raman spectrum, Fig. 1c. The Raman peaks assigned to a-Si vibration modes are clearly visible at  $155 \text{ cm}^{-1}$  (transverse



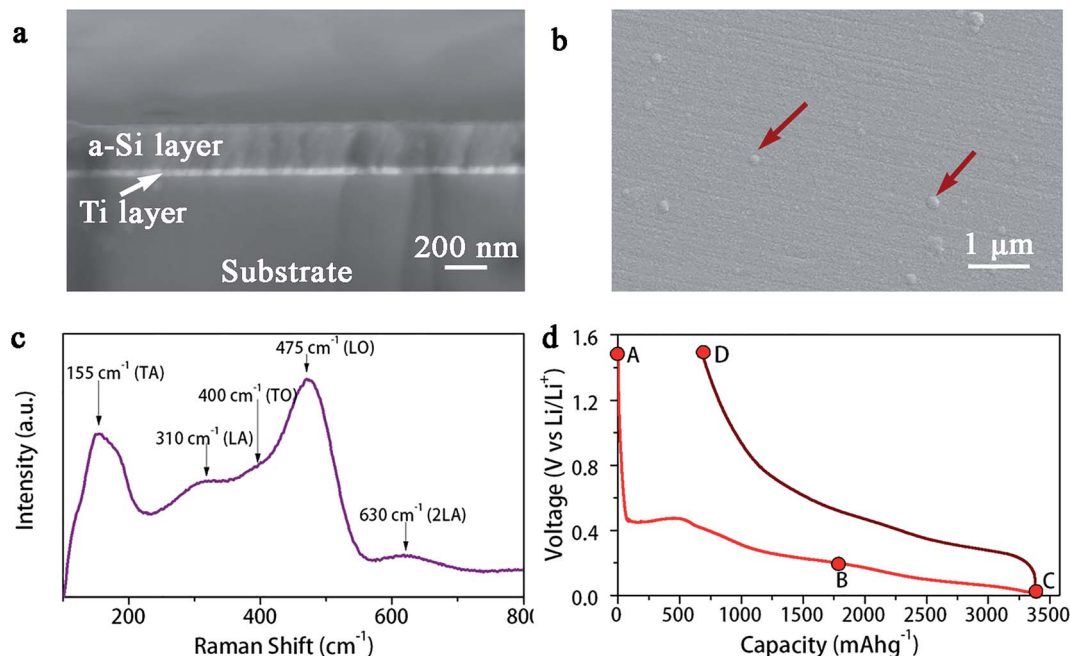


Fig. 1 (a) SEM cross-section image and (b) surface morphology of a-Si thin film, (c) Raman spectrum analysis and (d) first-cycle galvanostatic charge–discharge curves of the a-Si thin film electrode.

acoustic – TA),  $310\text{ cm}^{-1}$  (longitudinal acoustic – LA),  $400\text{ cm}^{-1}$  (transverse optic – TO) and  $475\text{ cm}^{-1}$  (longitudinal optic – LO).<sup>34</sup> Also, the Raman peak around  $630\text{ cm}^{-1}$  corresponds to the 2LA second-order phonon and TO + TA overtone.<sup>34</sup> Fig. 1d shows the initial galvanostatic charge–discharge profiles (between 0.01 and 1.5 V at C/10 rate) of an electrochemical cell built with a-Si thin film working-electrode vs. metallic lithium counter-electrode. The discharge/charge curve is in agreement with previous electrochemical data reported for a-Si electrodes.<sup>18,35,36</sup> The a-Si film has the discharge capacity of  $3378\text{ mA h g}^{-1}$  and charge capacity of  $2702\text{ mA h g}^{-1}$ , resulting in 80% coulombic efficiency during the initial cycle.

In Fig. 2, SEM images indicate the surface morphology of the a-Si thin film during the initial lithiation and delithiation cycle. The pristine film consists of clusters of small spherical particles (Fig. 2b), a typical feature of sputtered thin films.<sup>37</sup> Upon lithiation, the Li–Si alloying reaction leads to a volume expansion of the film, up to 300%.<sup>11</sup> Large blisters appear in the fully lithiated thin film (Fig. 2c), apparently due to the volume expansion of those blisters observed in pristine a-Si surface (Fig. 1b). As the expansion of the film is restricted by the substrate, mechanical stress is generally expected.<sup>6</sup> However, there are no observable cracks in the fully lithiated films. Removal of lithium upon delithiation results in the formation of cracks ( $>10\text{ }\mu\text{m}$ ) after the first delithiation as shown in Fig. 2e. Also, the morphology is changed after the first delithiation as observed in Fig. 2f.

### 3.2. Structure and properties of lithiated a-Si thin films

Thin films at several lithiation/delithiation states (indicated by A, B, C and D in Fig. 1d) were prepared for the nanoindentation test. These states correspond to (A) pristine a-Si, (B)  $\text{Li}_{1.8}\text{Si}$ , (C)  $\text{Li}_{3.75}\text{Si}$

and (D) delithiated a-Si. Due to the reactivity of lithium containing films, they were fully immersed in a paraffin oil bath during the nanoindentation test. To understand possible influence of paraffin oil on the indentation test, several reference materials were firstly tested in both air and the oil and no notable difference was observed. Fig. 3 shows indentation load–displacement curves for the thin films under  $\sim 1\text{ mN}$  maximum load. The observed load–displacement responses are clearly different depending on the charge–discharge state of the films. The energy dissipated during loading is manifested as both elastic and plastic deformation, which is partially recovered in an elastic manner during unloading.<sup>38</sup> The total energy dissipated is represented by the area enclosed within the loading–unloading curves. From Fig. 3, the energy dissipated during indentation process is calculated as  $1.39 \times 10^{-11}\text{ J}$ ,  $3.79 \times 10^{-11}\text{ J}$ ,  $4.70 \times 10^{-11}\text{ J}$  and  $2.51 \times 10^{-11}\text{ J}$  for pristine a-Si,  $\text{Li}_{1.8}\text{Si}$ ,  $\text{Li}_{3.75}\text{Si}$  and delithiated a-Si respectively. It is clear that the amount of energy dissipated increases with increasing lithium concentration. Neglecting residual elastic strain, such difference can be attributed to large plastic deformation of the lithiated films. Interestingly, the delithiated a-Si film exhibits increased plasticity compared to pristine a-Si, indicating that the original a-Si structure cannot be recovered after delithiation.

Also, the strong stress-potential coupling ( $100\text{--}120\text{ mV GPa}^{-1}$ )<sup>39</sup> in the lithiated a-Si thin film can result in non-uniform concentration gradients in and around the indentation volume. Considering the Li diffusion coefficient ( $D$ ) in a-Si thin film (in the order of  $2 \times 10^{-9}\text{ cm}^2\text{ s}^{-1}$ ),<sup>40,41</sup> the time scale for Li ions to diffuse through a-Si thin film (thickness  $L$  of  $\sim 200\text{ nm}$ ) is in the order of  $0.2\text{ s}$  ( $t \sim L^2/D$ ), which is smaller than the relaxation time ( $2\text{ s}$ ) during nanoindentation. It is thus sufficient for Li diffusion to dissipate the indentation-induced lithium concentration



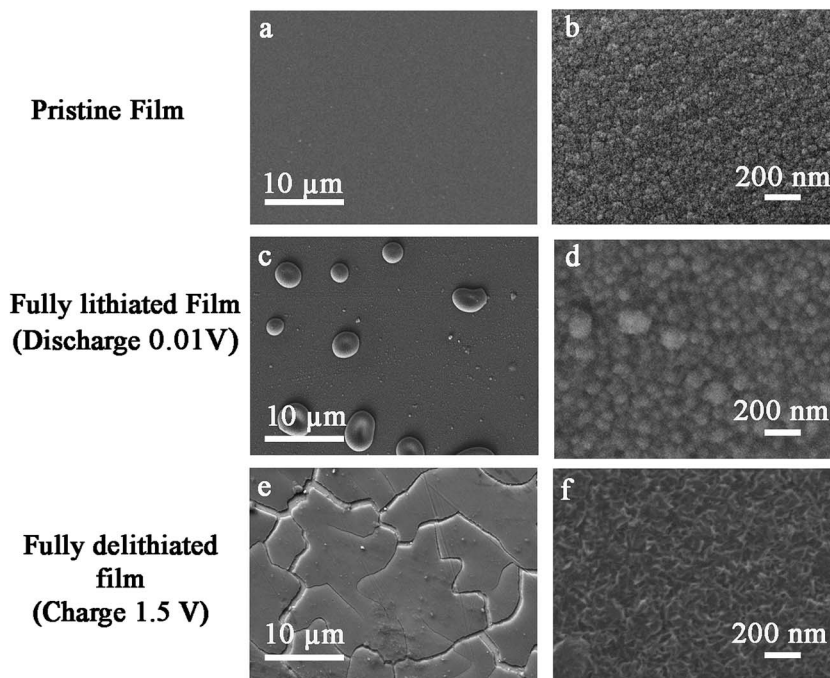


Fig. 2 SEM micrographs of surface morphology evolution during lithiation–delithiation cycle. (a and b) Pristine film, (c and d) fully-lithiated film and (e and f) fully-delithiated film.

gradients. Therefore, and the  $\text{Li}_x\text{Si}$  film can be considered as a homogeneous material, where the conventional approach of Oliver and Pharr is appropriate for the analysis of nano-indentation load–displacement data.

The elastic modulus and hardness of the thin films were estimated using partial unloading method to remove possible substrate effect. Ten indentations were conducted for each sample, and the modulus and hardness for each unloading

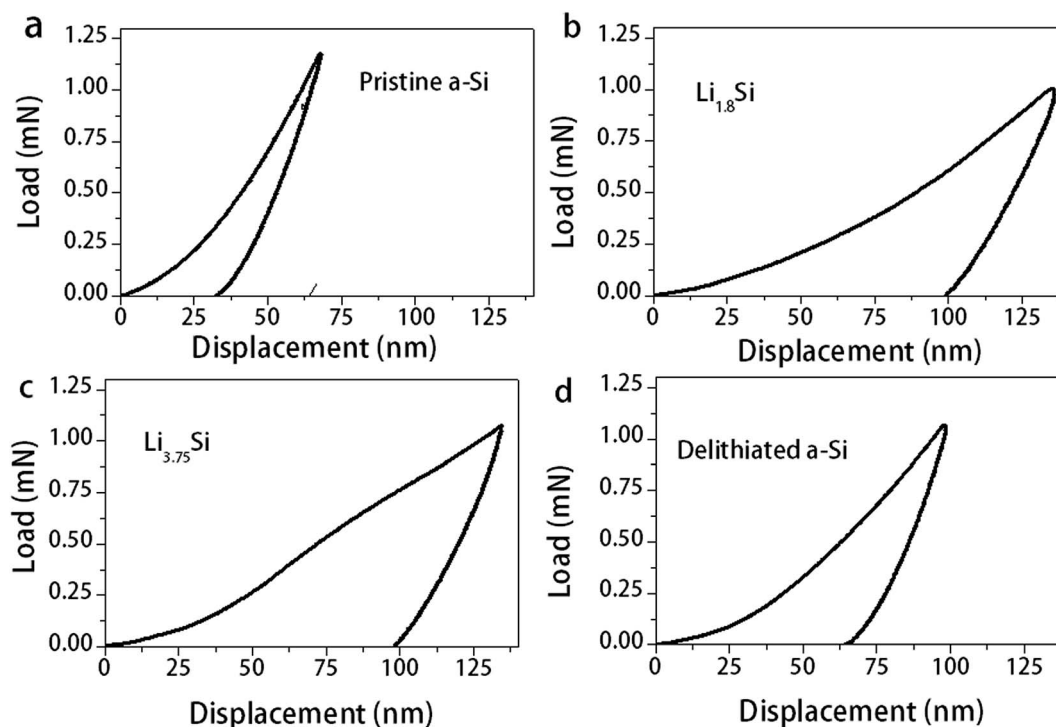


Fig. 3 Nanoindentation load–displacement curves for (a) pristine a-Si (b)  $\text{Li}_{1.8}\text{Si}$  (c)  $\text{Li}_{3.75}\text{Si}$  and (d) delithiated a-Si films.





Table 1 Modulus and hardness from nanoindentation tests

Lithiation/delithiation state	Composition	Elastic modulus (GPa)	Hardness (GPa)
A – pristine	100% Si	120.8	9.9
B – partially (~50%) lithiated (0.2 V discharge)	Li <sub>~1.8</sub> Si	62.5	2.3
C – fully lithiated (0.01 V discharge)	Li <sub>~3.75</sub> Si	45.7	1.9
D – fully delithiated (1.5 V charge)	~100% Si	80.0	3.5

section were analyzed using Oliver and Pharr method.<sup>42</sup> The average reduced modulus vs. contact depth was extrapolated to zero contact depth to obtain the true reduced modulus.<sup>38</sup> Table 1 summarizes the elastic modulus and hardness of the thin films. Progressive softening of Li<sub>x</sub>Si with increasing Li concentration can be observed, with a drop of elastic modulus from 120 GPa to 45.7 GPa and a hardness drop from 9.9 GPa to 1.9 GPa after full lithiation. The progressive softening of a-Si thin films are in good agreement with the initial first-principle studies reported by Shenoy *et al.*,<sup>43</sup> where the young's modulus of a-Si and Li<sub>15</sub>Si<sub>4</sub> was reported as ~95 GPa and ~40 GPa respectively. Also, these first principle studies show a linear decrease in these properties with increasing Li concentration. However, the nanoindentation results reported here show that the elastic modulus and hardness decrease with Li concentration in a nonlinear manner. At 50% full capacity of Li insertion, 48% reduction in elastic modulus and 76% reduction in hardness can be observed. Corresponding to full lithiation, however, further reduction in elastic modulus and hardness is only 13% and 4%, respectively. As identified in our previous molecular dynamic simulations,<sup>29</sup> the initial breakdown of Si-Si bonds takes place up to the formation of Li<sub>2.5</sub>Si, followed by relatively slower bond breaking to form Li<sub>3.75</sub>Si. We believe these structural changes are responsible for the evolution of elastic modulus and hardness observed. Furthermore, the elastic modulus and hardness are not fully recovered after removal of lithium, as the delithiated a-Si film shows reduced elastic modulus from 120 GPa to 80 GPa, and a drop of hardness from 9.9 GPa to 3.5 GPa. To unveil the responsible atomistic mechanisms, we conducted extensive MD simulations to investigate the evolution of Li<sub>x</sub>Si atomic structures, mechanical stress and failure during lithiation–delithiation cycles.

The possible reason for crack formation in the thin films (Fig. 2e) is the in-plane stresses caused by volume expansion and geometrical constraint by the substrate.<sup>14,19,44</sup> The in-plane bi-axial stresses in a constrained a-Si thin film during lithiation–delithiation cycle can be modeled using MD routine as shown in Fig. 4. The Li concentration in the simulations ( $x$  in Li<sub>x</sub>Si) ranges from 0 to 3.75, which corresponds to the Li intake observed at room temperature (formation of Li<sub>15</sub>Si<sub>4</sub>, at a capacity of 3579 mA h g<sup>-1</sup>).<sup>45</sup> As shown in Fig. 4, compressive stress is developed during lithiation. Corresponding to lower Li concentrations ( $x < 0.25$ ), there is a sharp increase of compressive stress. Then, gradual stress relaxation is observed

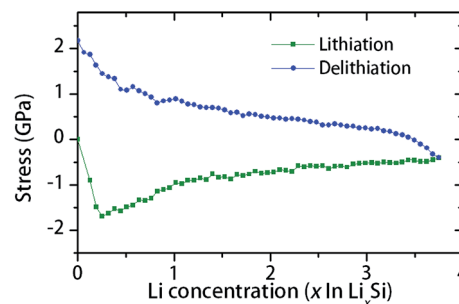


Fig. 4 MD simulation of in-plane stress in the a-Si thin film constrained by a substrate during the initial lithiation–delithiation cycle.

with the increase of Li concentration. On the other hand, the stress is changed to tension during delithiation with a sharp rise at the final stage ( $x < 0.5$ ). The residual stress is about 2 GPa at the end of the cycle ( $x = 0$ ). The sharp rise of tensile stress is believed to be the reason for cracking observed during the final stage of the delithiation. Also, the observed stress variations during lithiation–delithiation are considered to be associated with the change of the microstructure and mechanical properties. At low Li concentrations, large stresses can be built up as the structure is dominated by covalent Si-Si bonds. Instead, at a higher Li concentration, lithium rich phases can flow plastically to accommodate volume expansion. Thus, high Li concentration results in reduced mechanical stress, due to increased proportion of Li-Li bonds.

It is well known that the lithiation reaction in silicon progresses *via* separation of covalent Si-Si bonds and creating new Si-Li and Li-Li bonds, to form Li<sub>x</sub>Si intermetallic phases.<sup>22,46</sup> Obviously, the microstructural changes of these phases are responsible for their macroscopic mechanical properties. For the a-Si and Li<sub>x</sub>Si amorphous phases, we conducted the Voronoi analysis which can be used to characterize the short range order of these structures. Also, we systematically investigate the evolution of atomic packing with increasing Li concentration and the deformation–failure process under uniaxial tension. In the Voronoi analysis, space is subdivided into a set of convex polyhedra called Voronoi cells, based on a set of points which define the center of each atom.<sup>47</sup> For each atom, there is a corresponding polyhedron consisting of all points closer to that atom than to any other. In general, a Voronoi cell represents the volume region occupied by the corresponding atom, thus it is a good indication of atomic packing in the space.

Fig. 5a shows the range of Voronoi cell volume observed for a-Si and Li<sub>x</sub>Si structures for several lithium concentration ( $x$ ) values spanning from 0 to 3.75. Firstly, amorphous silicon ( $x = 0$ ), shows much larger Voronoi volume range of  $20.7 \pm 1.1 \text{ \AA}^3$ . This is because the a-Si structure forms a network of tetrahedrally bonded atoms, which consist of large interstitial spaces (Fig. 5b). These spaces are referred as  $T_d$ -like positions, which act as favourable sites for Li insertion.<sup>20,21</sup> With Li atoms filling into interstitial spaces, the Voronoi volume of silicon atoms tends to decrease, as shown in Fig. 5a. With the Si-Si bond breaking and Si-Li bond formation, the structure becomes



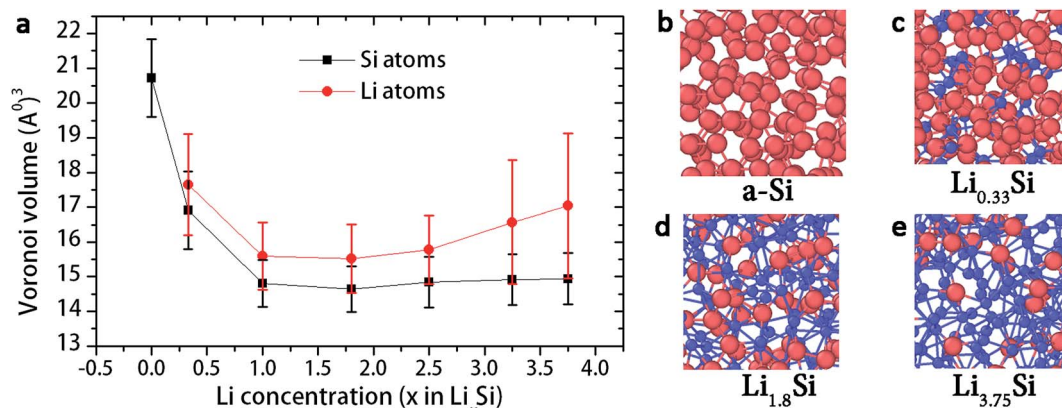


Fig. 5 (a) Evolution of Voronoi volume of atoms with increasing Li concentration (b) local atomic structure of a-Si, (c) Li<sub>0.33</sub>Si (d) Li<sub>1.8</sub>Si and (e) Li<sub>3.75</sub>Si. Blue spheres represent Li atoms and red spheres represent Si atoms.

more closely packed as  $x$  reaches 1.8. Fig. 5c and d shows local atomic structures of Li<sub>0.33</sub>Si and Li<sub>1.8</sub>Si respectively.

In our previous work,<sup>29</sup> we showed that the breakdown of Si-Si bonds dominantly takes place up to formation of Li<sub>2.5</sub>Si. At Li<sub>2.5</sub>Si, the silicon atoms are formed into isolated Si anions, Si-Si dumbbells and small clusters consisting with few Si atoms. When  $x > 2.5$ , more lithium ions invaded to the structure to create more Li-rich regions. Local atomic structures suggest that the Li atoms tend to cluster together in these high Li concentrations (Fig. 5e). Wan *et al.* showed that the negatively charged zones created by broken Si-Si bonds act as the main driving force for Li atom clustering.<sup>48</sup> Also, from Fig. 5a, it can be observed that the Voronoi volume of Li atoms is gradually increasing when  $x > 2.5$ , while the Voronoi volume of Si atoms remains stable. We believe that these Li rich atomic clusters create more loosely packed regions, resulting in increase of Voronoi volume of Li atoms when  $x > 2.5$ . Also, these Li-rich atomic clusters are believed to be responsible for extensive plastic deformation.

To further understand the deformation mechanisms and its dependence on microstructures, uniaxial tension was conducted in Li<sub>x</sub>Si structures ( $x = 0, 1, 1.8, 2.5, 3.25$  and  $3.75$ ) using molecular dynamic simulation. The simulated stress-strain curves are shown in Fig. 6a. The stress-strain curve for pristine

a-Si shows almost linear response similar to brittle materials. The Li<sub>x</sub>Si structures, in contrast, demonstrate an initial linear response followed by significant plastic deformation. Increase of lithium concentration decreases strength of Li<sub>x</sub>Si, but increases the ductility. The estimated elastic moduli are in good agreement with experimental measurement, as shown in Fig. 6b.

To understand the mechanisms underpinning progressive softening and extensive plasticity, the change of Si-Si, Si-Li and Li-Li bonds during tensile test was examined. Firstly, the radial distribution function (RDF) of undeformed structures was evaluated to determine the cutoff distances for each pair. Considering the first minima of corresponding RDF, the Si-Si cutoff distance is calculated as 3.0 Å, while both Li-Si and Li-Li cutoff distances are evaluated as 3.5 Å. To study the bond breaking, we first counted the number of each type of bonds present in the undeformed structures, and also in the deformed structures after reaching total strain of 0.25. Next, the proportion of each type of bonds to the total number of broken bonds was calculated for each lithium concentration. The proportion of Si-Si, Si-Li and Li-Li bonds participated in fracture in Li-Si phases are shown in Fig. 7. It should be noted that the Si-Si, Li-Si and Li-Li bonds inherit different characteristics. The covalent Si-Si bonds are generally strong, highly directional and

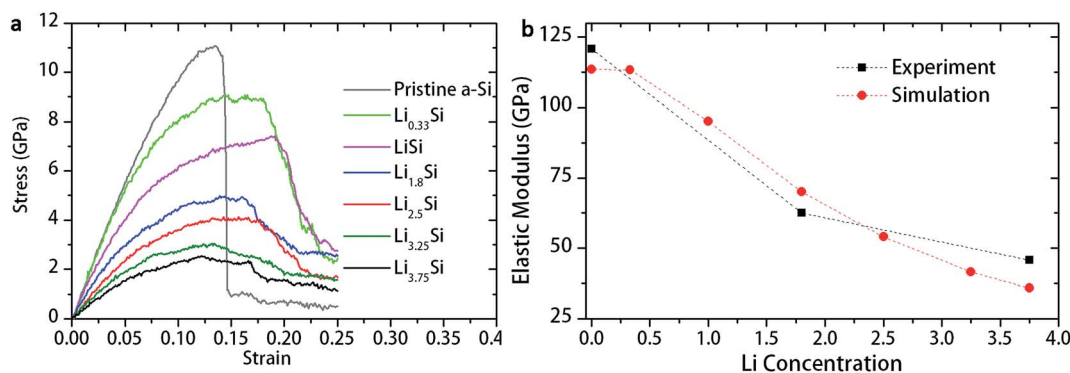


Fig. 6 (a) Stress-strain behavior of Li<sub>x</sub>Si structures under uniaxial tension, and (b) elastic modulus of Li<sub>x</sub>Si evaluated by nanoindentation and MD simulation.



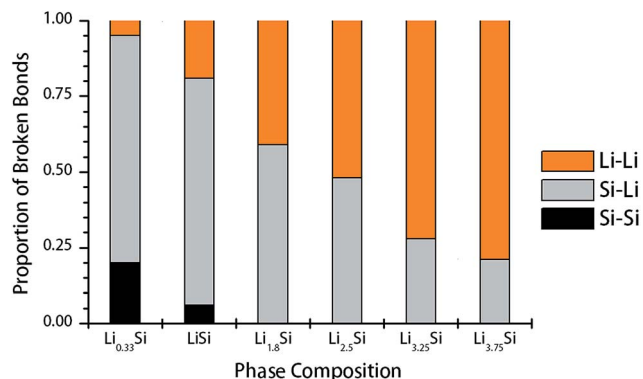


Fig. 7 Contribution of each type of bonds for failure of  $\text{Li}_x\text{Si}$  structures under uniaxial tension.

resistant to plastic deformation. On the other hand, Si-Li bonds show a weak ionic-covalent character and able to accommodate some plastic deformation.<sup>25</sup> The Li-Li bonds are metallic in nature, which are non-directional bonds and having highest

degree of freedom to rearrange under load. In Fig. 7, for structures with lower Li concentrations ( $\text{Li}_{0.33}\text{Si}$ ,  $\text{LiSi}$ ), the fracture predominantly occurs by breaking of Si-Li and Si-Si bonds, thereby exhibiting relatively high strength, but limited plastic deformation. As the Li concentration increases, Si-Si bonds no longer participate in the deformation. Instead, Li-Li bonds starts to dominate the deformation and final fracture, especially when  $x > 2.5$  or higher.

Fig. 8 further elucidates the bond breaking mechanisms of  $\text{Li}_{0.33}\text{Si}$ ,  $\text{Li}_{1.8}\text{Si}$  and  $\text{Li}_{3.75}\text{Si}$  phases during tensile deformation. For  $\text{Li}_{0.33}\text{Si}$  structure given in Fig. 8a, it is clear that the fracture is dominated by breaking of Si-Li bonds. This is obvious as the Si-Li bonds are of lower strength than Si-Si bonds. It can be observed that the Si-Si bonds still hold the structure together even after the failure of Si-Li bonds (Fig. 8a right panel). Fig. 8b shows the fracture process of  $\text{Li}_{1.8}\text{Si}$ . In this structure, both Si-Li and Li-Li bonds equally participate at the fracture process. In  $\text{Li}_{3.75}\text{Si}$  structure, the clustering of Li atoms is observed, as marked in Fig. 8c (left panel). Also, in Fig. 8c, we observed that failure predominantly occurs in these Li rich regions. We

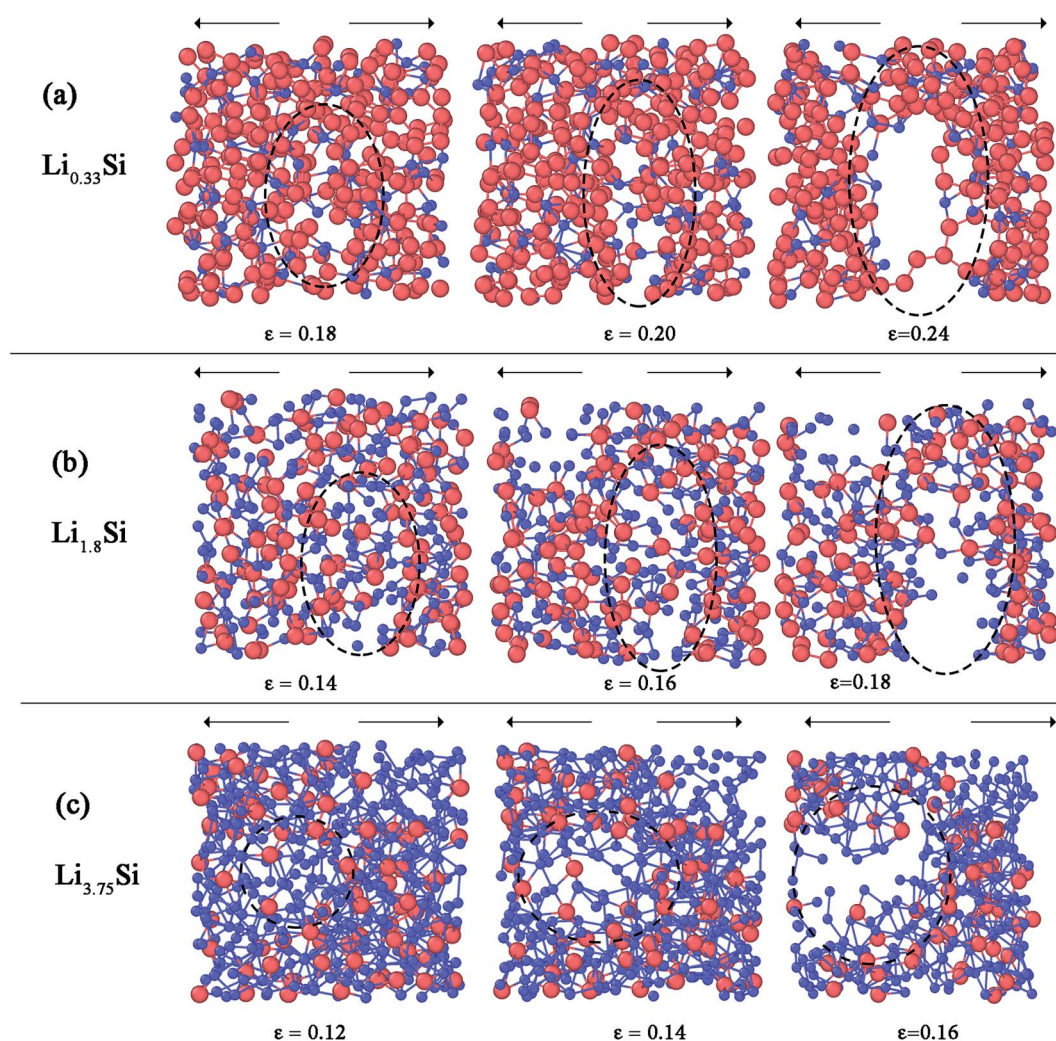


Fig. 8 Fracture mechanisms of (a)  $\text{Li}_{0.33}\text{Si}$  (b)  $\text{Li}_{1.8}\text{Si}$  and (c)  $\text{Li}_{3.75}\text{Si}$  structures. Blue spheres represent Li atoms and red spheres represent Si atoms. The symbol  $\epsilon$  represents the strain level.





believe that Li–Li bonds are weaker than Si–Si and Si–Li bonds; hence the fracture predominantly occurs at these Li rich atomic clusters.

### 3.3. Deformation and fracture mechanisms of delithiated a-Si

In Table 1, large drop of elastic modulus (from 120 to 80 GPa) and hardness (from 9.9 to 3.5 GPa) can be observed for the fully delithiated a-Si. In other words, the material has started to become softer or plastic after subjecting to a complete lithiation–delithiation cycle. To reveal the responsible atomistic details, we performed MD simulations to investigate the structure–property relationship of the material before and after lithiation–delithiation process. Firstly, the pristine a-Si and delithiation a-Si structures were subjected to triaxial tensile stress by deforming the simulation cell in all three directions at a constant strain rate of  $10^8 \text{ s}^{-1}$ . Fig. 9 shows the triaxial stress in the a-Si structures as a function of volumetric strain ( $\epsilon_v$ ). The pristine a-Si and delithiated a-Si structures show notable differences in stress–strain behavior. Firstly, the pristine a-Si shows a larger peak stress of 9.64 GPa, compared to that of delithiated a-Si (7.19 GPa). Secondly, pristine a-Si shows catastrophic failure similar to brittle materials, while the delithiated structure undergoes some plastic deformation during fracture.

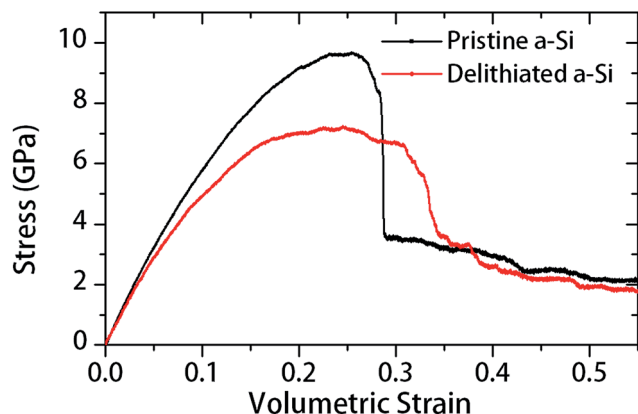


Fig. 9 Triaxial tension stress with respect to volumetric strain for pristine and delithiated a-Si structures.

The increased plasticity of delithiated a-Si was also observed in nanoindentation test, as described in Section 3.2.

It is anticipated that the lithiation-induced microstructural changes are responsible for the changed mechanical behavior of delithiated a-Si. To understand the microstructural changes, the coordination number before and after the first lithiation–delithiation cycle was evaluated as shown in Fig. 10a. Amorphous silicon has a disordered tetrahedral structure,<sup>49</sup> and defect-free a-Si has a coordination number (CN) of 4. Therefore, the coordination analysis (Fig. 10a) shows that there is an increase of over-coordinated (CN = 5, 6) and under-coordinated (CN = 3) atoms in the delithiated a-Si. Furthermore, the radial distribution functions (RDF) of the two structures are evaluated and compared in Fig. 10b. The RDF of the pristine a-Si is in good agreement with experimental results of Laaziri *et al.*,<sup>49</sup> with the first neighbor peak at 2.6 Å. However, after initial lithiation–delithiation cycle the first neighbor peak is shifted to a larger pair distance, which is an indication of weakened Si–Si bonds.<sup>46</sup>

Demkowicz and Argon<sup>50</sup> presented a theory of plasticity in amorphous silicon, where the dense-liquid like atomic environments act as plasticity carriers. To identify the plasticity carriers in a-Si, Demkowicz and Argon presented a measure of local atomic configurations, which can be evaluated through the bond angles of each atom with nearest neighbors. Every atom  $i$  in the structure have  $m_i$  nearest neighbor atoms within the cutoff distance, and these bonds define  $x$  nearest neighbor bond angles for atom  $i$ . For example, a four coordinated atoms has six bond angles with its nearest neighbors. The solid diamond-like configurations show mean bond angle close to  $109^\circ$ , with smaller standard deviation. On the other hand, the dense ‘liquid-like’ configurations show relatively smaller mean bond angle with larger standard deviation. To identify the ‘solid-like’ and ‘liquid-like’ configurations, the distribution of mean and standard deviation of bond angles for pristine and delithiated structures are plotted in Fig. 11a and b respectively. According to Fig. 11a, the four-coordinated atoms show the ‘solid-like’ configurations with bond angles closer to  $109^\circ$ . There are a small number of over-coordinated atoms, which show ‘liquid-like’ atomic arrangement. The delithiated a-Si model has same number of atoms, but amount of 4-coordinated atoms are decreased and the over-coordinated and under-coordinated

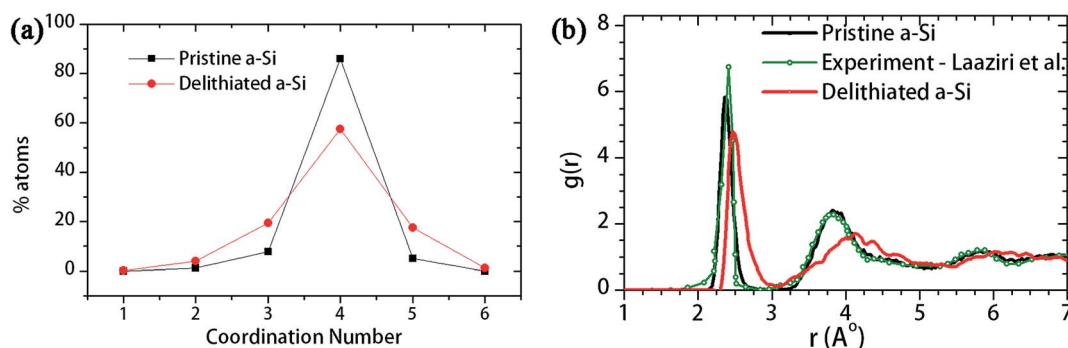


Fig. 10 (a) Coordination number and (b) radial distribution function (RDF) of the pristine a-Si and a-Si after first lithiation–delithiation cycle.





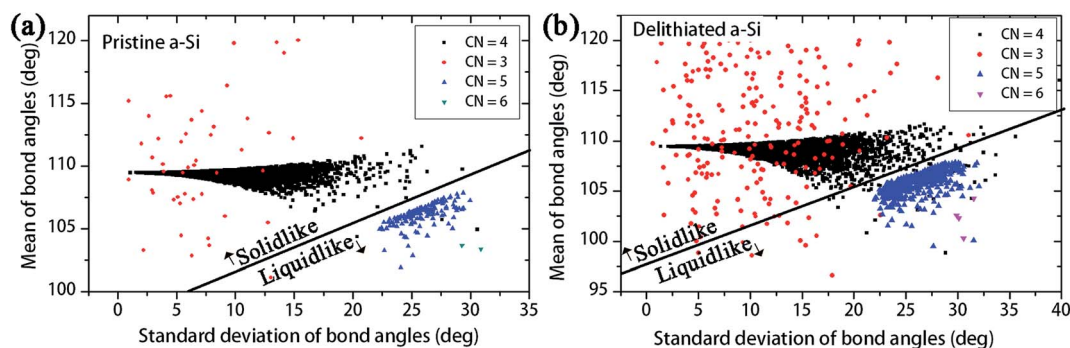


Fig. 11 Local atomic environment in (a) pristine a-Si and (b) delithiated a-Si, separated into two distinct types according to the means and standard deviations of bond angles with nearest neighbor atoms.

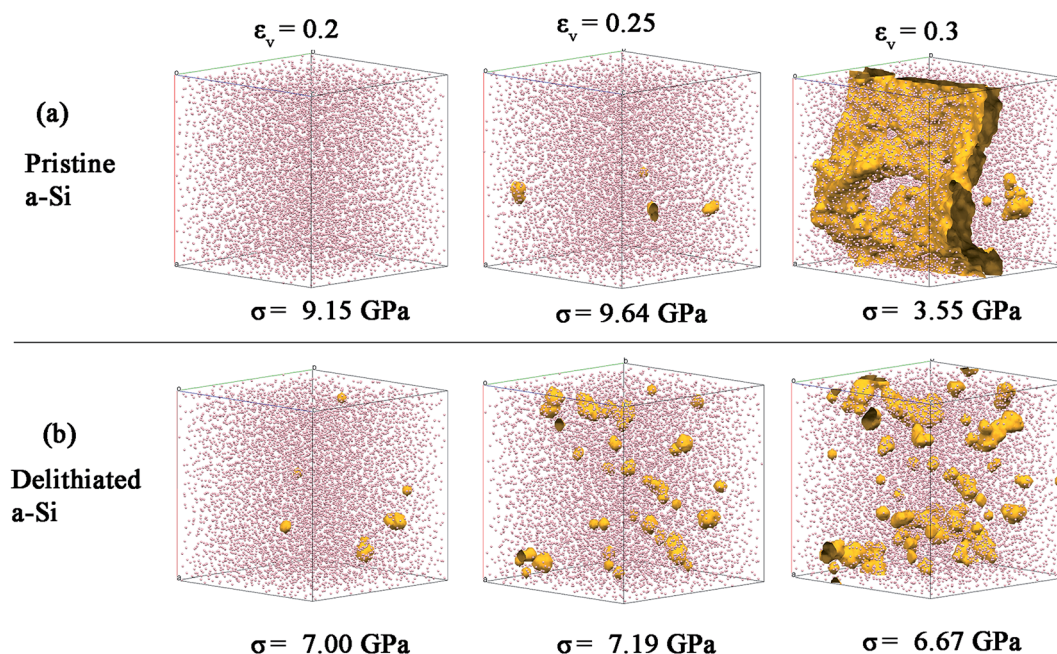


Fig. 12 Void nucleation and growth in (a) pristine and (b) delithiated a-Si structures.

atoms are increased. According to Fig. 11b, the amount of 'liquid like' atoms in delithiated a-Si is increased with the increase of over-coordinated atoms. Thus, the bond angle analysis suggests that delithiated a-Si structure have increased number of plasticity carriers compared to pristine a-Si. Also, Fig. 11 shows the increase of under-coordinated (CN = 3) atoms, which creates low density regions in the structure. These regions often act as void nucleation sites during fracture process.<sup>23</sup> The analysis of cavitation (*i.e.* void nucleation and growth) of these structures during triaxial tension is presented in Fig. 12.

The cavitation process (nucleation and growth of voids) due to bond breaking was mapped using a spherical probe with the diameter of 3 Å, which can be swept through the voids or channels in the structure. In Fig. 12, the evolution of the voids with volumetric strain (0.2, 0.25 and 0.3) is shown. There are relatively fewer sites for void nucleation for pristine a-Si (Fig. 12a). These voids link quickly with increase of strain (0.3), leading to the final failure. This is similar to typical brittle

fracture in solids at which catastrophic fracture initiates from structure defects such as voids. On the other hand, delithiated a-Si shows a large number of void nucleation sites due to increased number of under-coordinated atoms (Fig. 12b). Also, voids gradually increase and coalescence with the increasing strain, demonstrating a feature often observed in ductile fracture. The ductile behavior may be also related to the increase of dense 'liquid like' configurations. Therefore, the atomic disorder induced by lithiation–delithiation process results in cavitation of a-Si at lower stress, but also result in increased ductility during fracture.

## 4. Conclusions

In this work, the structure, mechanical properties and deformation and failure mechanism of amorphous silicon thin film electrodes has been studied using nanoindentation and molecular dynamic simulations. Cracking has been observed in



these 200 nm a-Si thin film after initial lithiation–delithiation cycle. The stress analysis of the a-Si films constrained by substrate indicates that a high tension stress (2 GPa) is generated upon full delithiation, which contributes to the cracking observed. Both experiment and the MD simulations confirm reduced strength, elastic modulus but increased ductility in these a-Si films after the lithiation–delithiation cycle. The MD simulations reveal the transition of fracture mechanisms of  $\text{Li}_x\text{Si}$  around  $x \sim 2.5$ . When  $x < 2.5$ , fracture is dominated by breaking of Li–Si bonds; but the breaking of metallic Li–Li bonds start to dominate the fracture when  $x > 2.5$ . As the Li concentration increases, the increased number of Li–Li bonds create more loosely packed atomic environment, which facilitates the extensive plastic deformation of the material. After one cycle, increased disorder has been observed in the delithiated a-Si with over-coordinated and under-coordinated atoms. The mapping of void nucleation and growth indicates different failure modes in pristine and delithiated a-Si, *i.e.*, brittle and ductile fracture, respectively. We believe these results contribute to a better understanding of the deformation and failure of lithiated Si.

## Acknowledgements

The authors wish to acknowledge the Central Analytical Research Facility (CARF) and High Performance Computing (HPC) Service of Queensland University of Technology. HS would like to acknowledge Queensland University of Technology for financial support given by APA, IPRS and QUT excellence top up scholarships. Also, authors wish to acknowledge the financial support from an ARC Discovery Project (DP150101717).

## References

- 1 L. Lu, X. Han, J. Li, J. Hua and M. Ouyang, *J. Power Sources*, 2013, **226**, 272–288.
- 2 M. M. Thackeray, C. Wolverton and E. D. Isaacs, *Energy Environ. Sci.*, 2012, **5**, 7854–7863.
- 3 W.-J. Zhang, *J. Power Sources*, 2011, **196**, 13–24.
- 4 L. Croguennec and M. R. Palacin, *J. Am. Chem. Soc.*, 2015, **137**, 3140–3156.
- 5 M. T. McDowell, S. W. Lee, W. D. Nix and Y. Cui, *Adv. Mater.*, 2013, **25**, 4966–4985.
- 6 A. Mukhopadhyay and B. W. Sheldon, *Prog. Mater. Sci.*, 2014, **63**, 58–116.
- 7 M. Ko, S. Chae, S. Jeong, P. Oh and J. Cho, *ACS Nano*, 2014, **8**, 8591–8599.
- 8 N. Liu, Z. Lu, J. Zhao, M. T. McDowell, H.-W. Lee, W. Zhao and Y. Cui, *Nat. Nanotechnol.*, 2014, **9**, 187–192.
- 9 H. Sitinamaluwa, S. Zhang, W. Senadeera, G. Will and C. Yan, *Mater. Tech.*, 2016, **31**, 872–883.
- 10 M. Ge, X. Fang, J. Rong and C. Zhou, *Nanotechnology*, 2013, **24**, 422001.
- 11 M. T. McDowell, S. W. Lee, J. T. Harris, B. A. Korgel, C. Wang, W. D. Nix and Y. Cui, *Nano Lett.*, 2013, **13**, 758–764.
- 12 L. A. Berla, S. W. Lee, I. Ryu, Y. Cui and W. D. Nix, *J. Power Sources*, 2014, **258**, 253–259.
- 13 T. Takamura, S. Ohara, M. Uehara, J. Suzuki and K. Sekine, *J. Power Sources*, 2004, **129**, 96–100.
- 14 V. A. Sethuraman, M. J. Chon, M. Shimshak, V. Srinivasan and P. R. Guduru, *J. Power Sources*, 2010, **195**, 5062–5066.
- 15 M. J. Chon, V. A. Sethuraman, A. McCormick, V. Srinivasan and P. R. Guduru, *Phys. Rev. Lett.*, 2011, **107**, 045503.
- 16 M. Pharr, Z. Suo and J. J. Vlassak, *J. Power Sources*, 2014, **270**, 569–575.
- 17 B. Hertzberg, J. Benson and G. Yushin, *Electrochem. Commun.*, 2011, **13**, 818–821.
- 18 L. A. Berla, S. W. Lee, Y. Cui and W. D. Nix, *J. Power Sources*, 2015, **273**, 41–51.
- 19 V. A. Sethuraman, M. J. Chon, M. Shimshak, N. Van Winkle and P. R. Guduru, *Electrochem. Commun.*, 2010, **12**, 1614–1617.
- 20 G. A. Tritsarlis, K. Zhao, O. U. Okeke and E. Kaxiras, *J. Phys. Chem. C*, 2012, **116**, 22212–22216.
- 21 S. Huang and T. Zhu, *J. Power Sources*, 2011, **196**, 3664–3668.
- 22 E. D. Cubuk and E. Kaxiras, *Nano Lett.*, 2014, **14**, 4065–4070.
- 23 B. Ding, X. Li, X. Zhang, H. Wu, Z. Xu and H. Gao, *Nano Energy*, 2015, **18**, 89–96.
- 24 H. Wang and H. B. Chew, *Extreme Mechanics Letters*, 2016, **9**, 503–513.
- 25 K. Zhao, W. L. Wang, J. Gregoire, M. Pharr, Z. Suo, J. J. Vlassak and E. Kaxiras, *Nano Lett.*, 2011, **11**, 2962–2967.
- 26 A. France-Lanord, E. Blandre, T. Albaret, S. Merabia, D. Lacroix and K. Termentzidis, *J. Phys.: Condens. Matter*, 2014, **26**, 055011.
- 27 D. H. Tsai, *J. Chem. Phys.*, 1979, **70**, 1375–1382.
- 28 M. Zhou, *Proc. R. Soc. London, Ser. A*, 2003, **459**, 2347–2392.
- 29 H. S. Sitinamaluwa, M. C. Wang, G. Will, W. Senadeera, S. Zhang and C. Yan, *J. Appl. Phys.*, 2016, **119**, 245103.
- 30 C. F. Macrae, P. R. Edgington, P. McCabe, E. Pidcock, G. P. Shields, R. Taylor, M. Towler and J. v. d. Streek, *J. Appl. Crystallogr.*, 2006, **39**, 453–457.
- 31 S. Plimpton, *J. Comput. Phys.*, 1995, **117**, 1–19.
- 32 R. L. C. Vink, G. T. Barkema, W. F. van der Weg and N. Mousseau, *J. Non-Cryst. Solids*, 2001, **282**, 248–255.
- 33 Z. Cui, Z. Cui, F. Gao and J. Qu, *J. Power Sources*, 2012, **207**, 150–159.
- 34 V. Baranchugov, E. Markevich, E. Pollak, G. Salitra and D. Aurbach, *Electrochem. Commun.*, 2007, **9**, 796–800.
- 35 H. Xia, S. Tang and L. Lu, *Mater. Res. Bull.*, 2007, **42**, 1301–1309.
- 36 M. Demirkan, L. Trahey and T. Karabacak, *J. Power Sources*, 2015, **273**, 52–61.
- 37 N. Sata, Y. Shibata, F. Iguchi and H. Yugami, *Solid State Ionics*, 2015, **275**, 14–18.
- 38 A. C. Fischer-Cripps, in *Nanoindentation*, Springer, 2011, pp. 147–161.
- 39 V. A. Sethuraman, V. Srinivasan, A. F. Bower and P. R. Guduru, *J. Electrochem. Soc.*, 2010, **157**, A1253–A1261.
- 40 L. B. Chen, J. Y. Xie, H. C. Yu and T. H. Wang, *J. Appl. Electrochem.*, 2009, **39**, 1157–1162.



- 41 K. Yoshimura, J. Suzuki, K. Sekine and T. Takamura, *J. Power Sources*, 2007, **174**, 653–657.
- 42 W. C. Oliver and G. M. Pharr, *J. Mater. Res.*, 1992, **7**, 1564–1583.
- 43 V. B. Shenoy, P. Johari and Y. Qi, *J. Power Sources*, 2010, **195**, 6825–6830.
- 44 F. F. Fan, S. Huang, H. Yang, M. Raju, D. Datta, V. B. Shenoy, A. C. T. van Duin, S. L. Zhang and T. Zhu, *Modell. Simul. Mater. Sci. Eng.*, 2013, **21**, 074002.
- 45 J. Y. Kwon, J. H. Ryu and S. M. Oh, *Electrochim. Acta*, 2010, **55**, 8051–8055.
- 46 H. Kim, C.-Y. Chou, J. G. Ekerdt and G. S. Hwang, *J. Phys. Chem. C*, 2011, **115**, 2514–2521.
- 47 C. H. Rycroft, *Chaos*, 2009, **19**, 041111.
- 48 W. Wan, Q. Zhang, Y. Cui and E. Wang, *J. Phys.: Condens. Matter*, 2010, **22**, 415501.
- 49 K. Laaziri, S. Kycia, S. Roorda, M. Chicoine, J. Robertson, J. Wang and S. Moss, *Phys. Rev. Lett.*, 1999, **82**, 3460.
- 50 M. J. Demkowicz and A. S. Argon, *Phys. Rev. B: Condens. Matter Mater. Phys.*, 2005, **72**, 245205.

