



CrossMark
click for updates

Cite this: *RSC Adv.*, 2017, 7, 13858

Mutational analysis to identify the residues essential for the acetyltransferase activity of GlmU in *Bacillus subtilis*

Meng Wang, Minhua Huang, Huawei Gu, Shan Li, Yi Ma* and Jufang Wang*

The novel and attractive antimicrobial drug target, glucosamine-1-phosphate acetyltransferase/*N*-acetylglucosamine-1-phosphate uridylyltransferase (GlmU), is a bifunctional enzyme that catalyzes two sequential steps in the biosynthesis of UDP-GlcNAc, essential for both lipopolysaccharide and peptidoglycan in Gram positive and Gram negative bacteria. Glucosamine-1-phosphate acetyltransferase catalyzes the formation of *N*-acetylglucosamine-1-phosphate and *N*-acetylglucosamine-1-phosphate uridylyltransferase catalyzes the formation of UDP-GlcNAc. In this study, *glmU* genes from *Escherichia coli* and *Bacillus subtilis* were cloned and the corresponding proteins were produced in an *E. coli* BL21 (DE3) expression system. The kinetic parameters and reaction conditions, such as initial reaction rate, optimal temperature and pH, and the effect of Mg²⁺ ion concentration of GlmU enzymes from *E. coli* (Ec-GlmU) and *B. subtilis* (Bs-GlmU) were detected. Compared to Ec-GlmU, Bs-GlmU exhibits much lower glucosamine-1-phosphate acetyltransferase activity. Based on the *in silico* results of a virtual amino acid mutation and molecular docking of Bs-GlmU, five mutants were successfully constructed to verify the predicted alterations of acetyltransferase activity. The result of point mutations indicated that the C405 and A380 residues played key role in catalytic mechanism of acetyltransferase of Bs-GlmU providing new insight into the reaction mechanism of GlmU enzymes and supporting the further development of antimicrobial drugs.

Received 3rd January 2017
Accepted 21st February 2017

DOI: 10.1039/c7ra00086c

rsc.li/rsc-advances

1 Introduction

Uridine 5'-diphospho *N*-acetylglucosamine (UDP-GlcNAc), an acetylated nucleotide sugar, plays an important role in the biochemistry of all living organisms.^{1–3} As an essential substrate to synthesize many biomolecules, including lipopolysaccharide, peptidoglycan and oligosaccharides, UDP-GlcNAc has high potency to exploit pharmaceuticals and functional materials.^{4,5} However, due to the lack of an efficient method to synthesize this product, UDP-GlcNAc is in great demand and its price is notoriously high.^{6,7} Infection caused by pathogenic bacteria has become a serious threat to public health in recent years. A sharp rise in bacteria resistant to antibiotics has emerged as a serious issue which renders drugs ineffective for fighting against bacterial infection.^{8,9} Few new antibiotics to combat Gram-positive organisms and no new drugs for Gram-negative pathogens have become available for clinical research or in the pharmaceutical market for last 40 years.^{10–12}

Recent research has suggested that enzymes involved in cell wall biosynthesis could be useful targets for developing new antibiotics.^{13,14} Peptidoglycan is a major component of the cell

wall that provides structural strength and rigidity and is essential for survival and growth of the bacterium.^{15–17} Peptidoglycan chains are made up of a repeating *N*-acetylglucosamine (NAG) and *N*-acetylmuramic acid (NAM) units, which are cross linked by peptide bridges.¹⁸ Several reactions in different cytoplasmic and membranes steps are involved in the biosynthesis of peptidoglycan. Three enzymes, glutamine fructose-6-phosphate transferase (GlmS), phosphoglucosamine mutase (GlmM) and glucosamine-1-phosphate acetyltransferase/*N*-acetylglucosamine-1-phosphate uridylyltransferase (GlmU), participate in the synthesis of UDP-GlcNAc, which is the main intermediate in the formation of peptidoglycan and lipid A.^{16,19,20} Both peptidoglycan and lipid A are necessary for cell viability and perturbing UDP-GlcNAc synthesis which catalyzed by GlmU have grave effects on the fitness of the bacteria.^{21,22}

GlmU catalyzes two consecutive reactions: the first is an acetyltransferase reaction with the help of acetyl coenzyme A (Ac-CoA) to convert α -D-glucosamine-1-phosphate (GlcN1P) to *N*-acetyl α -D-glucosamine-1-phosphate (GlcNAc1P) and produces the by-product coenzyme A (CoA). The second step is a uridylyltransferase reaction converting GlcNAc1P to UDP-GlcNAc using UTP as a uridyl group donor and releasing pyrophosphate (PPi).^{23–25} The first step is widespread in bacteria enzymes but is missing in humans, whereas the uridylyltransferase step is

School of Bioscience and Bioengineering, South China University of Technology, 510006 Guangzhou, China. E-mail: bimayikobe@scut.edu.cn; jufwang@scut.edu.cn; Fax: +86-20-39383034; +86-20-39380626; Tel: +86-20-39383034; +86-20-39380626



present in enzymes of both bacteria and humans.^{26,27} The acetyltransferase domain could be a suitable target for developing nontoxic antibacterial inhibitors.²⁸

The study of Ec-GlmU have confirmed that the N-terminal portion of the enzyme contains the uridylyltransferase domain and the C-terminus functions as an acetyltransferase.^{29,30} The crystal structure of Ec-GlmU with multiple substrates revealed that the 2-amino group of GlcN-1-PO₄ is positioned in proximity to AcCoA to facilitate direct thioester attack by a ternary complex mechanism.^{31,32} The cell wall structure of Gram-positive bacteria is quite different to that of Gram-negative bacteria. There is urgent need to explore Gram-positive bacteria such as *B. subtilis* since understanding Bs-GlmU will provide important information for developing novel inhibitors. However, there are few articles pertaining to Bs-GlmU. The GcaD protein in *B. subtilis* is the similar to GlmU with uridylyltransferase activity but no acetyltransferase activity.^{33,34} In this study, Bs-GlmU is recombinant expressed and characterized and the structure model of Bs-GlmU is obtained. Based on the *in silico* results of virtual amino acid mutation and molecular docking of Bs-GlmU, five mutants are constructed to investigate the mechanism and key amino acid residues of acetyltransferase in Bs-GlmU, providing a new template for understanding the structure and function of GlmU in Gram-positive bacteria. Our results will support further GlmU research and facilitate high-throughput inhibitor screening.

2 Materials and methods

2.1 Materials

Reagents related to *E. coli* and *B. subtilis* glmU gene cloning and site-directed mutagenesis were purchased from TakaRa Biotechnology Co., Ltd (Dalian, China). Competent cells *E. coli* DH5 α and BL21 (DE3) were obtained from TIANGEN Biotech (Beijing, China). The Ni-NTA His-binding column from QIAGEN (Dusseldorf, Germany) was used for protein purification. The chemicals used for enzyme assays were purchased from Sigma-

Aldrich Chemical Co. (St. Louis, MO, USA). All chemical reagents used in this study were analytical grade.

2.2 Nucleic acid manipulations

Genome DNA from *E. coli* and *B. subtilis* were prepared using a genome extraction kit (Sangon, Shanghai, China) as described in the manufacturer's handbook. The GlmU genes of *E. coli* (Ec-glmU) and *B. subtilis* (Bs-glmU) were amplified by PCR reaction using Prime STAR HS DNA Polymerase (TaKaRa, Dalian, China) from the genome DNA of *E. coli* and *B. Subtilis* strain respectively. The forward primer used for Ec-glmU was 5'-CGGGATCCATGTTGAATAATGCTATGAGCGTAGTGA-3' (BamH I restriction site underlined), and the reverse primer for Ec-glmU was 5'-CCGCTCGAGCTTTTTCTTTACCGGACGACGC-CAG-3' (Xho I restriction site underlined). The forward primer used for Bs-glmU was 5'-CGGGATCCATGGATAAGCGGTTTGCAGTTGTTT-3' (BamH I restriction site underlined), and the reverse primer for Bs-glmU was 5'-CCGCTCGAGTTTTTATGAATATTTTTACATAATCGTC-3' (Xho I restriction site underlined). Ec-glmU was amplified in 50 μ L of reaction buffer by initial denaturation temperature at 98 °C for 2 min followed by 32 cycles of 98 °C for 10 s, 71 °C for 15 s, and 72 °C for 90 s with a final 10 min extension at 72 °C. Bs-glmU was amplified in 50 μ L of reaction buffer by initial denaturation temperature at 98 °C for 2 min followed by 32 cycles of 98 °C for 10 s, 65 °C for 15 s, and 72 °C for 90 s with a final 10 min extension at 72 °C. The Ec-glmU and Bs-glmU genes were digested with BamH I and Xho I (Fermentas of Thermo Scientific, Pittsburgh, PA), then ligated with the double digested pET21a vector (Novagen, Wisconsin, USA) yielding the plasmids pET-Ec-glmU and pET-Bs-glmU, respectively. Competent *E. coli* DH5 α cells (Invitrogen, CA, USA) were used as the host for cloning. Transformed cells were spread on Luria-Bertani agar plates containing 100 ng μ L⁻¹ of ampicillin and incubated at 37 °C overnight. The positive clones were identified by colony PCR and confirmed by DNA sequence analysis. Sequence similarity searches were performed with the BLAST program (<http://www.ncbi.nlm.nih.gov/BLAST/>).

Table 1 Oligonucleotide primers used to construct mutant plasmids^a

Mutants plasmid	Name	Sequence	Notes
pBS-GlmU _{C380A}	BS-GlmU _{C380A} -F	GGCACTGATGTAACCTGGGC GCT GGTTCAATTACTGTCAATTATGATGGA	
	BS-GlmU _{C380A} -R	TCCATCATAATTGACAGTAATTGAACC AGC GCCCAGGTTTACATCAGTGCC	
pBS-GlmU _{C405S}	BS-GlmU _{C405S} -F	AAATTGAAGATGGCGCGTTTATCGGC AGC AATTCCAACCTGGTTGCCCTGTG	
	BS-GlmU _{C405S} -R	GACAGGGGCAACCAAGTTGGAATT GCT GCCGATAAACGCGCCATCTTCAATTT	
pBS-GlmU _{C405A}	BS-GlmU _{C405A} -F	TGAAGATGGCGCGTTTATCGGC GCT AATTCCAACCTGGTTGCCCT	
	BS-GlmU _{C405A} -R	AGGGGCAACCAAGTTGGAATT AGC GCCGATAAACGCGCCATCTTCA	
pBS-GlmU _{C380A-C405S}	BS-GlmU _{C380A-C405S} -F	AAATTGAAGATGGCGCGTTTATCGGC AGC AATTCCAACCTGGTTGCCCTGTG	Gene of pBS-GlmU _{C380A} as a template to construct pBS-GlmU _{C380A-C405S}
	BS-GlmU _{C380A-C405S} -R	GACAGGGGCAACCAAGTTGGAATT GCT GCCGATAAACGCGCCATCTTCAATTT	
pBS-GlmU _{V386C-C405S}	BS-GlmU _{V386C-C405S} -F	AACTGGGC TGC GGTTCAATTACT TGC AATTATGATGGAAGA	
	BS-GlmU _{V386C-C405S} -R	TCTTCCATCATAATT TCA AGTAATTGAACC GCA GCCCAGGTTT	

^a Mutated sites are marked in bold and underlined.



2.3 Expression and purification of Ec-GlmU and Bs-GlmU

Plasmids pET-Ec-glmU and pET-Bs-glmU were transformed into *E. coli* BL21 (DE3) (Novagen, Madison, WI, USA). The recombinant bacteria were induced to express recombinant Ec-GlmU and Bs-GlmU by adding isopropyl- β -D-thiogalactopyranoside (IPTG) at a final concentration of 1 mM to a culture with OD_{600} of approximately 0.6–0.8 and incubated at 37 °C for 3 h. Cell cultures (1 L) were separated by centrifugation at $5000\times g$ for 20 min. The cell pellets were re-suspended in 35 mL of binding buffer (20 mM Tris-HCl, 500 mM NaCl, 20% Glycerin, 50 mM imidazole, pH 8.0) and lysis with 450 sonication pulses (400 W, 3 s with a 5 s interval) cooled in an ice water bath.^{35–37} The

suspension was centrifuged ($11\,000\times g$ at 4 °C for 30 min), the supernatant passed through a 0.22 μ m filter and applied to a HiTrap™ Chelating HP column (GE Healthcare, Piscataway, NJ, USA). The Ec-GlmU and Bs-GlmU were purified using the standard nickel affinity chromatography procedure with elution buffer (20 mM Tris-HCl, 500 mM NaCl, 20% glycerol, 500 mM imidazole, pH 8.0). The purity of the proteins was evaluated using SDS-PAGE and the concentrations were determined by a BCA Protein Assay Kit (Sangon, Shanghai, China). Elution fractions of the containing proteins of interest were held in storage buffer (20 mM Tris-HCl, 50 mM NaCl, 20% glycerol, pH 8.0) at –80 °C.

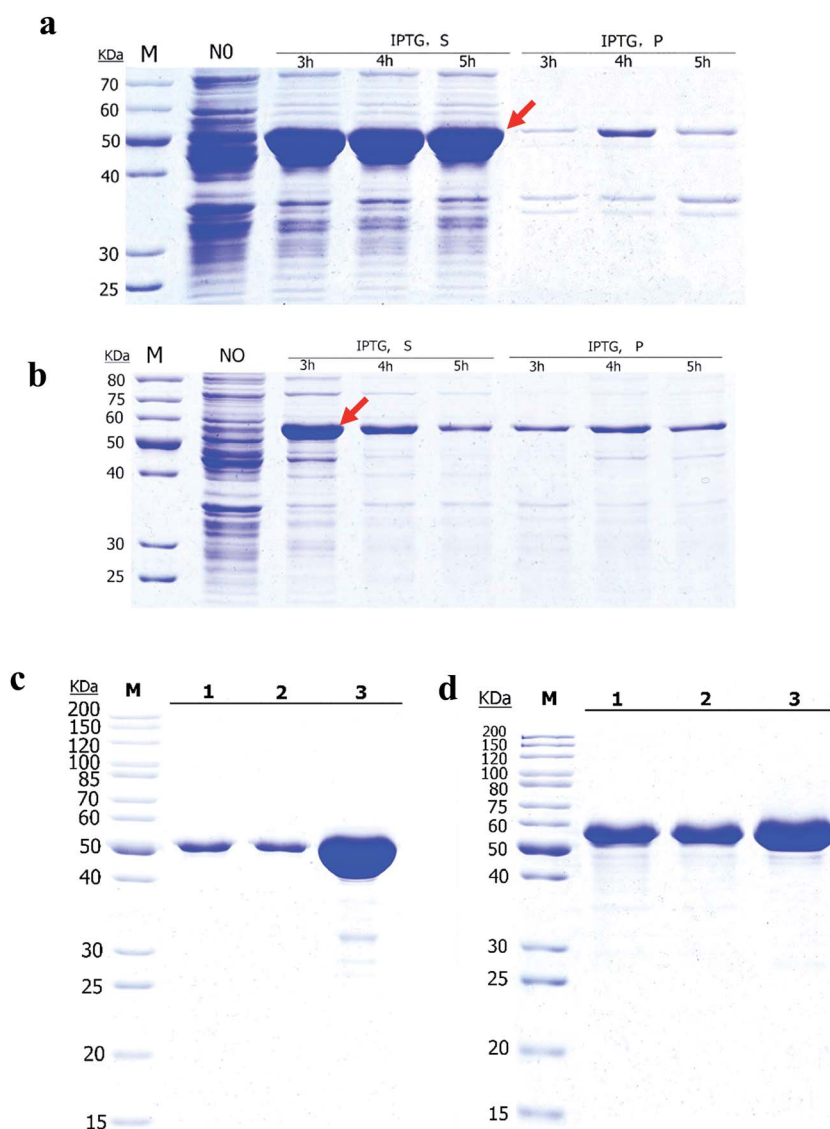


Fig. 1 Expression and purification of Bs-GlmU and Ec-GlmU in BL21 (DE3) cells. SDS-PAGE analysis of Ec-GlmU (a and c) and Bs-GlmU (b and d). A total of 1 mM IPTG was added into the cells when OD_{600} reach to 0.4–0.6. “NO” indicates that the cells were not induced with IPTG. Cells were induced with IPTG for 3, 4, or 5 h respectively. “IPTG S” means supernatant fractions of induced cells after sonication; “IPTG P” indicates the insoluble pellets of induced cells after sonication. “1, 2, 3” in (c) and (d) indicates different concentrations of Ec-GlmU and Bs-GlmU. Positions corresponding to Ec-GlmU and Bs-GlmU are marked by arrows. Optimal conditions of 1 mM IPTG and 3 h expression were used for the purified Ec-GlmU, Bs-GlmU. M, protein marker.



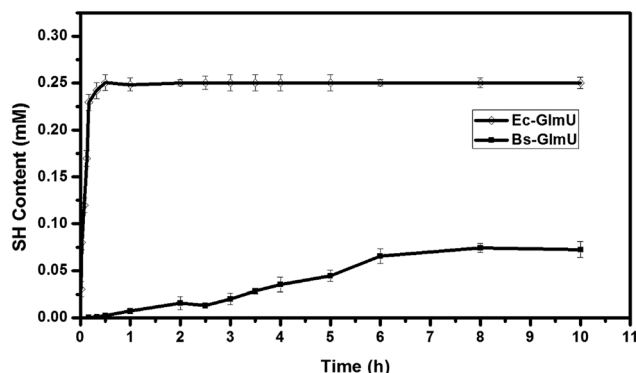


Fig. 2 Characterization and analysis of acetyltransferase activities between Ec-GlmU and Bs-GlmU. A colorimetric assay coupled with DTNB was taken for the detection of acetyltransferase activities. The acetyltransferase activities of Ec-GlmU, open diamonds; Bs-GlmU, filled square were measured in triplicate.

2.4 Enzymatic activity

The glucosamine-1-phosphate acetyltransferase activities of the wild-type and mutant GlmU were measured by a colorimetric microplate assay with 5, 5'-dithiobis (2-nitrobenzoic acid, DTNB).^{38,39} The 50 μ L reaction mixture (50 mM Tris-HCl, pH 8.0, 5 mM MgCl₂, 0.5 mM GlcN-1-P, 0.5 mM AcCoA, and 0.5 ng

purified GlmU protein) was incubated in a 96 well microtiter plate at 37 $^{\circ}$ C for different time gradients from 1 min to 10 hours. The reaction was terminated by addition of 50 μ L stop solution (50 mM Tris-HCl, 6.4 M guanidine hydrochloride, pH 8.0) and the mixture was incubated for 10 min at 37 $^{\circ}$ C with 50 μ L Ellman's reagent solution (0.2 mM DTNB in buffer [50 mM Tris-HCl, 1 mM EDTA, pH 8.0]).³⁵ The production of TNB²⁻, generated from the reaction of CoA-SH and DTNB, was monitored at a wavelength of 412 nm. A blank control with GlcN-1-P and AcCoA with inactive GlmU was used to correct the trial errors generated from the -SH group of GlmU protein.

2.5 Molecular modeling and docking

The 3D model of full-length Bs-GlmU was obtained by the homology modeling method on I-TASSER server.⁴⁰ Five prokaryotic GlmU from *E. coli* K-12 (PDBID: 2OI5), *M. tuberculosis* Rv37 (PDBID: 3DK5-A), *Streptococcus pneumonia* (PDBID: 1HM9-A), *Yersinia pestis* (PDBID: 3FWW-A) and *Haemophilus influenza* (PDBID: 2VOH-A) were selected as structural models to improve the accuracy of modeling. The initial AcCoA binding mode to Bs-GlmU was modeled through alignment of the Ec-GlmU and Bs-GlmU structures. Clashes between Bs-GlmU and AcCoA were removed by 2000 step energy minimization using NAMD2 program with CHARMM22 force field.⁴¹ AcCoA force

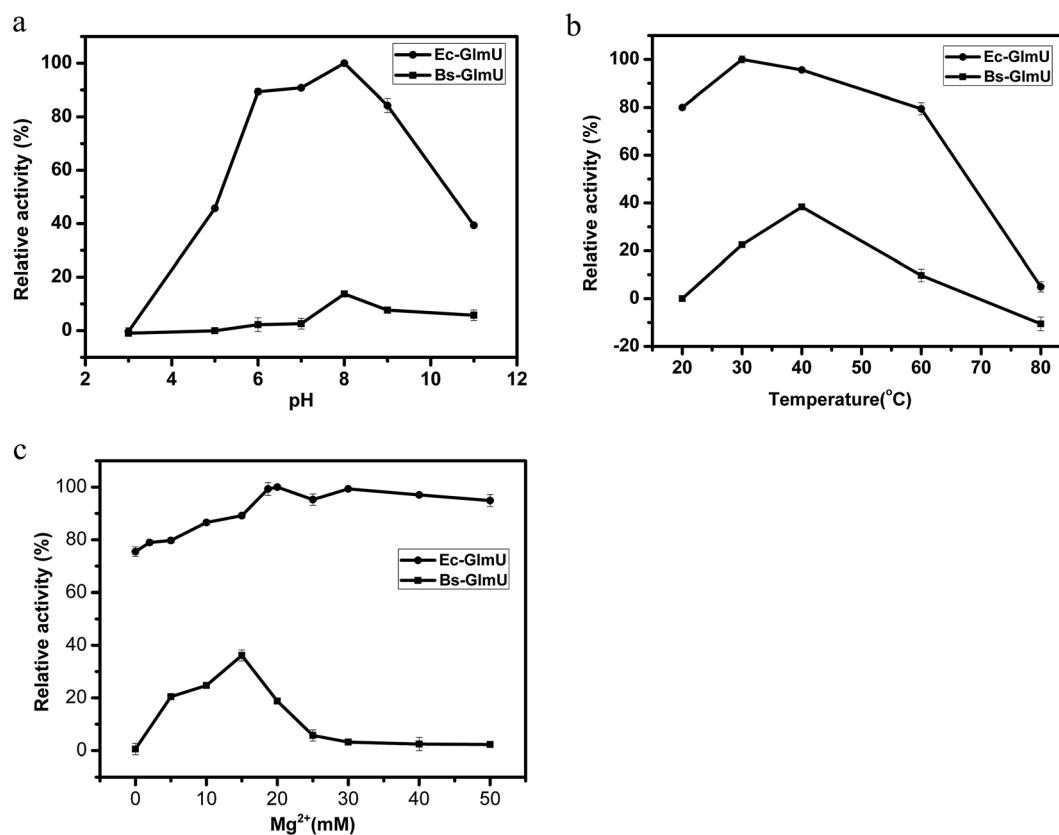


Fig. 3 Determination of optimal conditions for Ec-GlmU and Bs-GlmU. (a) The effect of pH (3–11) on Ec-GlmU (solid round) and Bs-GlmU (filled square) acetyl transferase activities. pH buffers with final concentration of 50 mM were as follows: citric acid–sodium citrate (pH 3.0); Na₂HPO₄–Na₂HPO₄ (pH 5.0–6.0); Tris–HCl (pH 7.0–9.0); NH₄Cl–NH₃H₂O (pH 11). (b) Different incubation temperatures on the acetyl transferase activities of Ec-GlmU and Bs-GlmU. (c) Different concentrations of Mg²⁺.



field parameter was assigned by the CHARMM General Force field (CGenFF) program on ParamChem server.⁴² The mutated structures were modeled by visual molecular dynamics,⁴³ and 2000 step energy minimization applied to refine the structures. All structural representations were drawn by visual molecular Dynamics Software.

2.6 In vitro mutagenesis

Multiple protein sequences, including target protein sequences, were aligned and analyzed. The amino acid sites selected for mutation are shown in the Table 1. In recent years, the method called Restriction Free (RF) cloning has been widely applied to insert desired DNA bases in mutation studies.^{44,45} This restriction free cloning PCR method was applied to construct the mutated genes from the wild-type Bs-glmU gene template using the primer pairs shown in Table 1. For double mutation in plasmid, this method was used with DNA sequence analysis for site mutations one by one to obtain the required plasmid. The GlmU proteins were expressed with a C-terminal 6 × His tag to allow protein purification that was provided by pET-21a (+) fused with an expression tag.

2.7 Kinetic studies of GlmU acetyltransferase

The initial velocity of bifunctional GlmU was closely associated with both the reaction time and concentration curves.⁴⁶ Conditions to optimize the initial velocity of GlmU were investigated in the ranges of pH 3–11 at 20–80 °C for temperature, and 0–25 mM for Mg²⁺ concentration. The steady-state kinetic parameters K_m and V_{max} for two substrates (GlcN1P and AcCoA)

were determined at various concentrations (0.05 to 5 mM) of one substrate maintaining the other substrate at fixed value (0.5 mM) for 10 min under optimal reaction conditions. The fixed value (0.5 mM) has been saturated for all GlmU enzymes by the pre-experiment results (data not show). All measurements were performed in triplicate and the data were analyzed by GraphPad software program (GraphPad Software, Inc. CA, USA).

3 Results and discussion

3.1 Expression and purification of Ec-GlmU and Bs-GlmU in *E. coli*

The Ec-GlmU and Bs-GlmU were expressed as C-terminal 6 × His tag fusion proteins using pET21a expression vectors in *E. coli* BL21 (DE3). The CA tag was fused at the N-terminal of Ec-GlmU and Bs-GlmU to achieve high yield. Ec-GlmU and Bs-GlmU have shown protein bands corresponding to about 52 kDa in SDS-PAGE (Fig. 1a and b). Both Ec-GlmU and Bs-GlmU were expressed in the soluble fraction with a yield of about 85% after 3 h induction with IPTG (Fig. 1a and b). No more target proteins was produced in longer induction time. The proteins then were purified by affinity chromatography and both purity reached 95% detected by SDS-PAGE gel (Fig. 1c and d).

3.2 Characterization and analysis of acetyltransferase activities of Ec-GlmU and Bs-GlmU

Elman's Reagent (DTNB) reacted with materials containing a-SH group and produces yellow TNB²⁻, which has particularly absorption at 412 nm.³⁸ This assay with high sensitivity was

<i>Bacillus subtilis str. 168</i>	IEILKNEGETVAAYQTGNFQETLGVNDRVALSQAEQFMKERINKRHMQNGVTLIDFNMNTYISPDVAVIGSD	272
<i>Escherichia coli K 12</i>ASRLERVYQSEQAELKLLLAGVMLRDPARFDFLRGTLTHGRD	40
<i>Streptococcus pneumoniae</i>	IGIFRETGEKQVAVYTLKDFDESGLGVNDRVALATAESVMRRRINHKHMVNGVSVFNPEATYIDIDVETAPE	270
<i>Haemophilus influenzae</i>	IALANQDNCQVAVQATDVMEVEGANRRLQALALERYFQNKQASKLLEGVMIYDPAARFDFLRGTLHGKD	268
<i>Yersinia pestis pestoides</i>	IALAHADGKKIATVHPTRLSEVEGVNRLQLSALERVFTGEAEKLLLAGVMLLDFSRFDFLRGELTHGRD	266
<i>Mycobacterium tuberculosis H37Ra</i>	IAILRSDGQTVHSHVDDSDALVAGVNNRVLAEASELNRRVVAHQLAGVTLVVDPAATTWIDVDVTTIGRD	256
Consensus	g v p	
<i>Bacillus subtilis str. 168</i>	TVIYPGTVIKSEVQIREDTIIIGPHEIMNSAIEISRTVIK.QSVVNHSKVGNDVNIIGFAHTRPDSVIGNE	341
<i>Escherichia coli K 12</i>	VEIDTNVILIEENVTLSHRVKIGTGCVIKNSVIGDDCEISPYTVVEDANLAAACTIGPFARLRPAGALLEG	110
<i>Streptococcus pneumoniae</i>	VQIEANVILKQTKIAETVLTNGTYVVDSTIAGAVIT.NSMIEESSVADGVTVCYFAHTRPNSSLGAQ	339
<i>Haemophilus influenzae</i>	VEIDVNVILIEENVKLEDRVKIGTGCVLKNVVIENDVEIKPYSVLEDSIVGEKAAIGPFARLRPAGELAAE	338
<i>Yersinia pestis pestoides</i>	ITIDTNVILIEENHVLIDRVRIKIGTGCVLKNCVIGDDSEISPYTVLEEDARLDANCTVIGPFARLRPAGELAE	336
<i>Mycobacterium tuberculosis H37Ra</i>	TVIHPGTQLLERTQIGRCRCVVGPDITLTDVAVYEDGASVV.RTHGSSSSIGDGAAVGPFYTLREGTALGAD	325
Consensus	i g g g g gp rp	
<i>Bacillus subtilis str. 168</i>	VKIENFVEIKKTKQFCDRSKASHLSYVGDAEVGTDVNLECGSITVNYDGKNKYLKIEDGAFIECNSNLVA	411
<i>Escherichia coli K 12</i>	AHYENFVEMKARLCKGSKAGHLITVLDAEIADNVNLSAGTITCNVDGANKFKLIGDDVVFVSDTQLVA	180
<i>Streptococcus pneumoniae</i>	VHLENFVEVGGSSIGENTKAGHLITVLDNCEVGSNVNFSAGTITVNYDGKNKYLKIEDGAFIECNSNLVA	409
<i>Haemophilus influenzae</i>	THVENFVEIKKSTVCKGSKVNHLYVGDSEISNQNLSAGVITCNVDGANKFKLIGDDVVFVSDTQLVA	408
<i>Yersinia pestis pestoides</i>	AHYENFVEIKKARLCKGSKAGHLISYVLDAEIAGVNLISAGTITCNVD.NKFKLIGDDVVFVSDTQLVA	404
<i>Mycobacterium tuberculosis H37Ra</i>	GKLEAFVEVENSTIGTGRVPHLITVYVEDADIEYSNLGASSVFNKR....RITVGVSHVKTGSDTFVVA	390
Consensus	g fve k g k hl y g g n g * * n t g * a	
<i>Bacillus subtilis str. 168</i>	PWTVGEGAYVAAGSTVTEIDPPGKALAIARARVWKNDDYVKNHKK.....	456
<i>Escherichia coli K 12</i>	PWTVGKATIAAGITVTRNNGENALAI SRVPTQKEGWRRPA.....	222
<i>Streptococcus pneumoniae</i>	PVELGDNSLVGAGSTITKDWPADAIAGRGRSINKDEYATRLPHHPKNG..	458
<i>Haemophilus influenzae</i>	PVKVANGATIGAGITITRDNENELVITRVAQRHIQGWQRP.....	450
<i>Yersinia pestis pestoides</i>	PWTVANGATIGAGITVTRDVAENELVSRVKQVHIQGWKRP.....	445
<i>Mycobacterium tuberculosis H37Ra</i>	PWITIGDGAYTGATVVRVDEPPGALAVSAGPFRNIENWVQRKRPGPSAAQA	441
Consensus	pv ag v q	

Fig. 4 Sequence alignment of Bs-GlmU and other GlmU amino acid sequence. Five GlmU from the following microorganism were selected: *Escherichia coli* K12, *Mycobacterium tuberculosis* H37Ra, *Haemophilus influenzae*, *Yersinia pestis* pestoides, *Streptococcus pneumoniae*. The residues in red box are those involved in acetyl transferase activities. The residues marked with asterisk are the key amino acid which was mutated in this study.



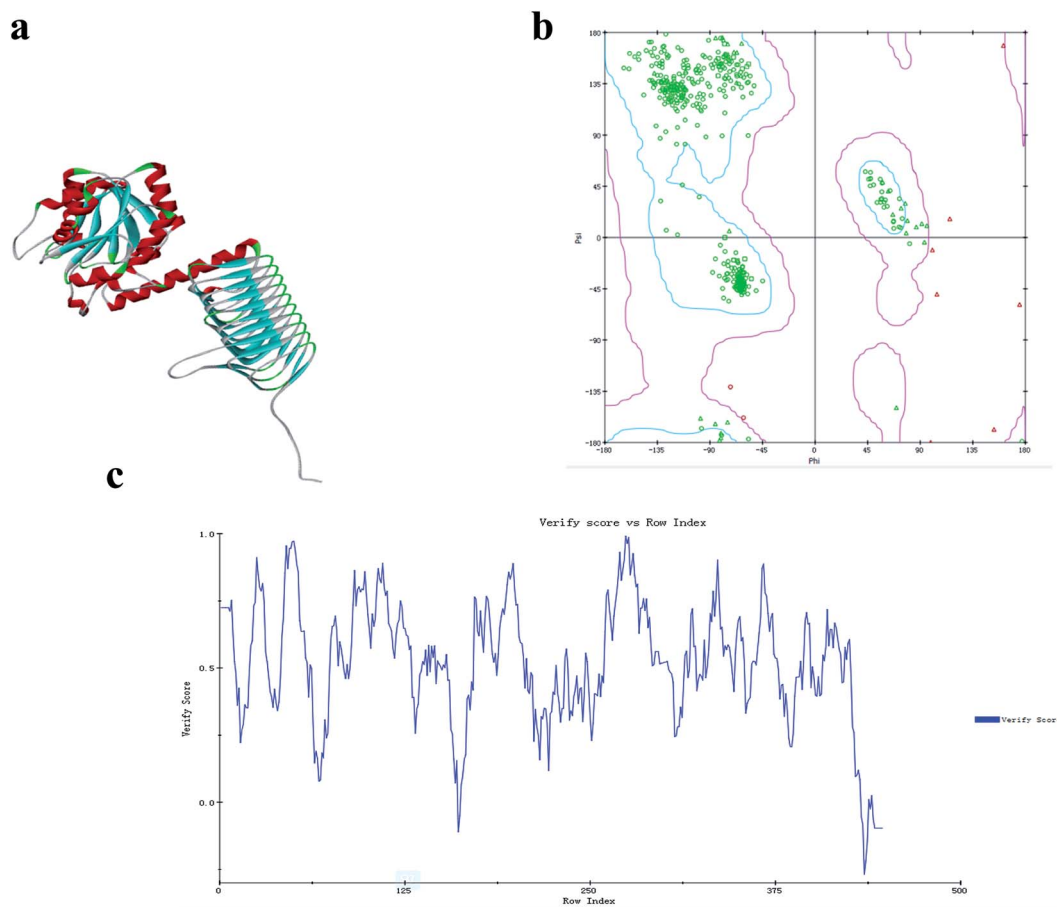


Fig. 5 Model of the monomeric structure of Bs-GlmU. (a) The modeled three-dimensional structure of Bs-GlmU. (b) The Ramachandran statistics of the simulated Bs-GlmU structure, showing the residues in the optimum region (blue), the allowed region (magenta), and the disallowed region (red triangle). (c) The structure of Bs-GlmU that was verified using Profile-3D.

used to detect the $-SH$ produced from AcCoA by Ec-GlmU and Bs-GlmU acetyltransferase catalysis.³⁸ The reaction with Ec-GlmU reaches equilibrium in 30 min however Bs-GlmU need 6 hours. Furthermore, the total $-SH$ produced from AcCoA by Ec-GlmU was 2.5 fold than that produced by Bs-GlmU (Fig. 2). The acetyltransferase activities of Ec-GlmU was similar to other reports.⁴⁷ Also, the GlmU acetyltransferase activity was tested from pH 3 to 11 and the optimal pH for both enzymes was 8.0 (Fig. 3a). The GlmU acetyltransferase activity was observed from 20 to 80 °C and there was a little difference in the optimal temperature of Ec-GlmU (30 °C) and Bs-GlmU (37 °C) (Fig. 3b). The concentration of Mg^{2+} had no effect on the enzymatic activity of Ec-GlmU, but Bs-GlmU activity was optimal at 15 mM (Fig. 3c.). According to these data analysis, the huge difference about the acetyltransferase activities between Ec-GlmU and Bs-GlmU illustrated that both catalysis mechanisms was not identical. Further virtual amino acid mutation on Bs-GlmU was implemented to interpret these differences.

3.3 Structural model of Bs-GlmU and virtual amino acid mutation analysis

GlmU is considered one of the most promising antibacterial drug targets because the first reaction catalyzed by this enzyme

is absent in mammals.⁴⁸ *E. coli* and *B. subtilis* are two normal models for Gram-negative and Gram-positive bacteria, respectively. Studies of GlmU from *E. coli* and *B. subtilis* are extremely instructive for the development of new antimicrobial agents. The X-ray crystal structure of the Ec-GlmU acetyltransferase active site confirmed the 2-amino group of GlcN-1- PO_4 is positioned in proximity to the AcCoA to facilitate direct attack on the thioester by a ternary complex mechanism.³¹ However, the mechanism of Bs-GlmU has not been reported.

The acetyltransferase active site, defined by the binding site for AcCoA, makes use of residues from all three subunits of GlmU and is positioned beneath an open cavity large enough to accommodate the Glc-1- PO_4 acetyl acceptor.³¹ The 2-amino group of GlcN-1- PO_4 is positioned in proximity to AcCoA to facilitate direct attack of the thioester by a ternary complex mechanism (based on the structure of *E. coli* bifunctional GlmU).⁴⁷ The Protein Data Bank (PDB) was BLAST searched for similar sequences using the target sequence (PDB ID: 3TWD-B, 3DK5-A, 2VOH-A, 3FWW-A, 1HM9-A) and the results were aligned (Fig. 4) to build a tertiary structure of monomeric Bs-GlmU (Fig. 5a) for homology modeling. The quality of the Bs-GlmU model was assessed by Ramachandran statistics⁴⁹ and Profile-3D.⁵⁰ 93.2% of the total amino acids were located in the optimum region of the Ramachandran plot, with 3.4% in the



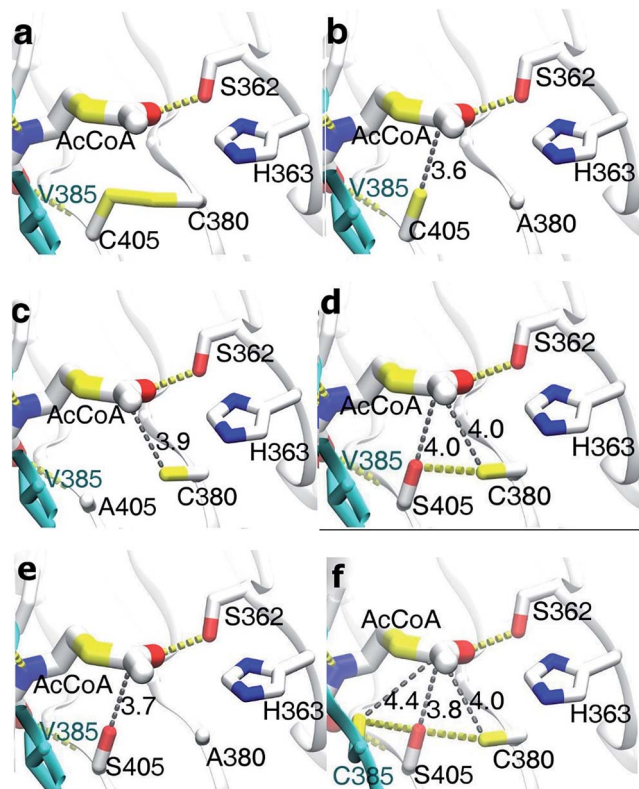


Fig. 6 Virtual amino acid mutation analysis and mutant model docking with AcCoA. H-bonds are shown in yellow dotted lines and hydrophobic interaction is indicated as gray dotted line. Arabic numerals next to the gray dotted line represent distance of hydrophobic interaction (Å). (a) Bs-GlmU_{WT} binding AcCoA model (in this model, yellow sticks between C380 and C405 indicated the disulfide bond); (b) Bs-GlmU_{C380A} binding AcCoA model; (c) Bs-GlmU_{C405A} binding AcCoA model; (d) Bs-GlmU_{C405S} binding AcCoA model; (e) Bs-GlmU_{C380A-C405S} binding AcCoA model; (f) Bs-GlmU_{V385C-C405S} binding AcCoA model.

allowed region and 3.4% in the disallowed region (Fig. 5b). The compatibility score of the majority of the amino acids was greater than zero in the Profile-3D graph (Fig. 5c). These structure evaluation analyses showed that the model represents the Bs-GlmU structure.

The result of the sequence alignment (Fig. 4) has shown that there were several cysteine residues in acetyltransferase region of Bs-GlmU, such as C380, C405 and so on. It is wonder that the disulfide bonds between cysteine residues in this region affected the activity of the acetyltransferase. The model of Bs-GlmU binding a substrate AcCoA was simulated (Fig. 6a). The acetyltransferase catalytic site interacts with AcCoA through a hydrogen bond between residue S362 and carbonyl group of AcCoA and through van der Waals interactions. The close distance between C380 and C405 suggested that these two residues could form a disulfide bond. The resulting disulfide bond has a weak interaction with the carbon atom of acetyl carbonyl group of AcCoA (Fig. 6a). Moreover, the K_m value of AcCoA to Bs-GlmU_{WT} was calculated (Fig. 8a) as 1.821 mM. Based on this result, it is speculated that the disulfide bond formed between C380 and C405 could seriously affect

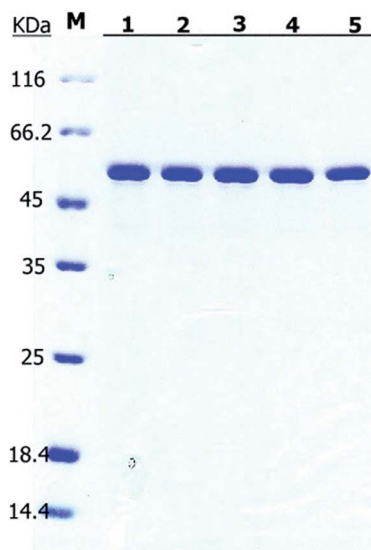


Fig. 7 SDS-PAGE of the purified Bs-GlmU mutants. M: protein marker; (1) Bs-GlmU_{C380A}; (2) Bs-GlmU_{C405S}; (3) Bs-GlmU_{C380A-C405S}; (4) Bs-GlmU_{C405A}; (5) Bs-GlmU_{V385C-C405S}.

acetyltransferase of Bs-GlmU. In order to verify this speculation, the purified Bs-GlmU was dialyzed to buffer S containing DTT from 5 mM to 10 mM to break disulfide bonds formed by cysteine residues. The results showed that the acetyltransferase activity indeed improved in varying degrees when Bs-GlmU was dialyzed to different concentrations of DTT buffer (data not shown). It illustrated that the existence of DTT have interrupted disulfide bonds formed by cysteine residues.

Based on this pre-experimental basis, virtual amino acid mutation analysis was used to design a mutant A (Bs-GlmU_{C380A}) to break the disulfide bond between C380 and C405. The Bs-GlmU_{C380A} mutant binding AcCoA model shows the negative charged sulfhydryl group of C405 interacts with the acetyl carbonyl carbon of AcCoA at distance 3.6 Å (Fig. 6b), which transition state is more stable than the original enzyme. Then the purified mutant protein Bs-GlmU_{C380A} was used to determine the enzyme activity and kinetic parameters (Fig. 7 and 8b). Not surprisingly, the acetyltransferase activity of Bs-GlmU_{C380A} was 2.6 folds high than that of Bs-GlmU_{WT}. Moreover, reaction time of Bs-GlmU_{C380A} to reach equilibrium phase (from 8 h to 30 min) reduced significantly (Table 2). The k_{cat}/K_m value of the Bs-GlmU_{C380A} mutant increased 67.1 fold because of the disulfide bond breakdown. The K_m of AcCoA to Bs-GlmU_{C380A} also decreased (Table 2). All results indicated that breaking the disulfide bonds formed by C380 and C405 could obviously enhance the acetyltransferase activity.

To investigate this phenomenon, mutant B (Bs-GlmU_{C405A}) was constructed. Surprisingly, the Bs-GlmU_{C405A} mutant binding AcCoA model showed that the negatively charged sulfhydryl group of C380 released in Bs-GlmU_{C405A} had a little longer distance (3.9 Å) to carbonyl carbon atom of AcCoA (Fig. 6c). This longer distance may not be able to improve stability of the transition state. It is predictable that acetyltransferase activities were not apparently increased. The kinetic



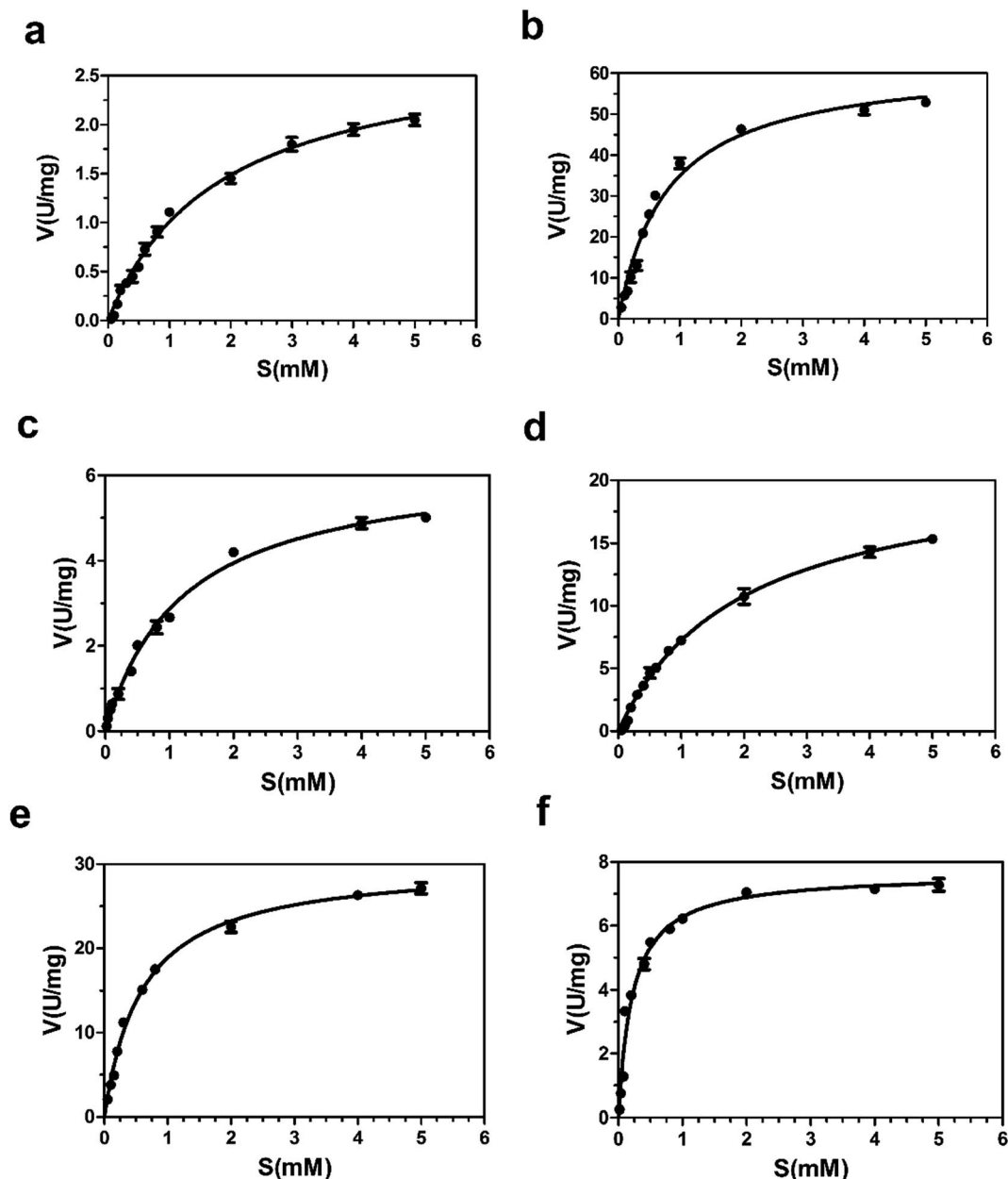


Fig. 8 Nonlinear Michaelis–Menten plots of the purified Bs-GlmU_{WT} and other five mutants with AcCoA. The steady-state kinetic parameters K_m and V_{max} for substrates AcCoA were determined at various concentrations (0.05, 0.1, 0.15, 0.2, 0.3, 0.4, 0.5, 0.6, 0.8, 1.0, 2.0, 4.0, 5.0 mM) of AcCoA maintaining substrate GlcN1P at fixed value (0.5 mM) under optimal reaction conditions. (a) Bs-GlmU_{WT}; (b) Bs-GlmU_{C380A}; (c) Bs-GlmU_{C405A}; (d) Bs-GlmU_{C405S}; (e) Bs-GlmU_{C380A-C405S}; (f) Bs-GlmU_{V385C-C405S}; the unit of “U” here is defined as: mmol min^{-1} .

assay experiment (Fig. 8c) was also consistent with the modeling assay and showed only a slightly increase in activity ($p > 0.05$). It suggested that not only the disulfide bonds formed by C380 and C405 can greatly decrease the acetyltransferase activities of Bs-GlmU, but also C405 played a key role in acetyltransferase activities of Bs-GlmU.

In order to validate this conclusion, we designed the mutant C (Bs-GlmU_{C405S}) which substitute cysteine with serine. Both S405 and C380 interact with the acetyl carbonyl carbon of AcCoA and increase stability of the transition state. However, the interaction force was weaker than that of the Bs-GlmU_{C380A}

mutant with a longer distance between the protein and substrate (4.0 Å) (Fig. 6d). In addition, there was a hydrogen bond between side chains S405 and C380 that affected the stability of the transition state. In the experiment, the slightly improved stability of the transition state in Bs-GlmU_{C405S} increased slightly (8 fold) in the k_{cat}/K_m value (Table 2 and Fig. 8d). The residue C405 replaced by A or S reduced greatly the enzyme activity which demonstrates that the residue C405 is indeed a key amino acid in the acetyltransferase of Bs-GlmU. Additionally, a double mutant D (Bs-GlmU_{C380A-C405S}) was constructed. In the Bs-GlmU_{C380A-C405S} mutant binding AcCoA



Table 2 The acetyl transferase kinetic parameters of BS-GlmU_{WT} and mutants

Mutants	Properties		GlcN-1-P			AcCoA		
	Stationary time (h)	Optimal activity (mM)	K_m (mM)	k_{cat} (s^{-1})	k_{cat}/K_m ($mM s^{-1}$)	K_m (mM)	k_{cat} (s^{-1})	k_{cat}/K_m ($mM s^{-1}$)
BS-GlmU _{WT}	8	0.08 ± 0.01	0.333 ± 0.012	0.810 ± 0.014	2.432 ± 1.166	1.821 ± 0.341	2.459 ± 0.241	1.350 ± 0.707
BS-GlmU _{C380A}	0.5	0.21 ± 0.02	0.241 ± 0.010	25.441 ± 0.051	105.564 ± 5.100	0.603 ± 0.068	54.617 ± 0.074	90.546 ± 1.088
BS-GlmU _{C405S}	2	0.10 ± 0.01	0.359 ± 0.014	2.407 ± 0.009	6.705 ± 0.643	1.963 ± 0.481	18.512 ± 0.472	9.430 ± 0.981
BS-GlmU _{C380A-C405S}	0.5	0.18 ± 0.03	0.470 ± 0.007	30.783 ± 0.010	65.496 ± 1.429	0.638 ± 0.252	26.147 ± 0.347	40.977 ± 1.377
BS-GlmU _{C405A}	6	0.11 ± 0.02	0.278 ± 0.013	3.112 ± 0.007	11.194 ± 0.538	1.213 ± 0.347	5.496 ± 0.294	4.531 ± 0.847
BS-GlmU _{V385C-C405S}	6	0.17 ± 0.02	0.304 ± 0.005	15.756 ± 0.008	51.829 ± 1.600	0.199 ± 0.024	6.629 ± 0.032	33.262 ± 1.333

model, neither disulfide nor hydrogen bonds formed between the 380 and 405 positions (Fig. 6e). The close distance (3.7 Å) between the hydroxy group and carbonyl carbon atom of AcCoA indicated that the C380A-C405S mutation enhanced stability of transition state compared with the C405S mutation. This distance (3.7 Å) was a little longer than Bs-GlmU_{C380A} (3.6 Å). The result of kinetic assay (Fig. 8e) was consistent with the modeling assay and showed that C380A-C405S double mutant has an increased k_{cat}/K_m value compared to Bs-GlmU_{WT} (Table 2). Above results indicated that A380 could be an essential amino acid which conferred Bs-GlmU a higher acetyltransferase activity than Ec-GlmU. Finally, a comprehensive analysis conducted to all acetyltransferase activities data, this paper draws such a conclusion that C405 and A380 may act as an important role in acetyltransferase activity of Bs-GlmU.

As reported by Zhang and Olsen, C385 from one monomer of GlmU interact with S405 from another monomer, which could enhance the stability of the Ec-GlmU trimer.^{23,51} Mutant E (Bs-GlmU_{V385C-C405S}) was constructed to test this interaction between amino acids. The model of Bs-GlmU_{V385C-C405S} binding AcCoA implied that C385, S405 and C380 interact with the pantetheine of AcCoA through hydrophobic interactions. The hydrogen bonds between C385-S405 and C380-S405 also enhance the stability of the transition state (Fig. 6f). The k_{cat}/K_m value of the mutant Bs-GlmU_{V385C-C405S} supported the statement (Table 2 and Fig. 8f).

4 Conclusion

As an essential substrate for two important biosynthetic pathways of peptidoglycan and lipid A in bacteria, studies on the GlmU enzyme has attracted increasing interests from both the industrial and the academic in recent decades. In this work, GlmU enzymes from *E. coli* and *B. subtilis* were successfully expressed and purified. Compared with Ec-GlmU and GlmU from other microorganisms, Bs-GlmU showed significantly lower acetyltransferase activity. By analyzing the result of the sequence alignment, we predicted the structure of Bs-GlmU and constructed five Bs-GlmU mutants by varying residues close to the acetyltransferase sites. The huge difference in acetyltransferase activity between mutants and Bs-GlmU_{WT} demonstrated that the C405 and A380 residue may play a key role in Bs-GlmU acetyltransferase activity. The studies on amino acid

mutation in acetyltransferase of Bs-GlmU provided an important way to comprehensive understand reaction mechanism of Bs-GlmU and set up a platform for the future research on GlmU enzyme in other Gram-positive microorganisms. This work supported the development of GlmU inhibitors to potential new anti-bacterial drugs.

Acknowledgements

This work was supported by the National Natural Science Foundation of China (Grant no. 21306055), Guangdong Natural Science Foundation (Grant no. 2014A030313261), the Ph.D. Programs Foundation of Ministry of Education of China (Grant no. 20130172120041), the Fundamental Research Funds for the Central Universities (Grant no. 2015ZM161) and Special Funds for the Cultivation of Guangdong College Students' Scientific and Technological Innovation (Climbing Program Special Funds, Grant no. pdjh2015b0048). We are grateful to Xuwan Dong and Bihong Li for technical support with the clones.

References

- 1 G. Joanny, D. J. Le, D. Bréchemier-Baey, V. Labas, J. Vinh, P. Régnier and E. Hajnsdorf, *Nucleic Acids Res.*, 2007, **35**, 2494–2502.
- 2 J. S. Rush, P. D. Rick and C. J. Wächter, *Glycobiology*, 1997, **7**, 315–322.
- 3 M. Bardor, R. Louvet, B. Sanit-Jean, C. Burel, B. Baiet, A. Carlier, J. P. Cadoret and P. Lerouge, EP, EP2412815, 2012.
- 4 M. L. Reitman, L. Lang and S. Kornfeld, *Methods Enzymol.*, 1984, **107**, 163–172.
- 5 S. Merello, A. J. Parodi and R. Couso, *J. Biol. Chem.*, 1995, **270**, 7281–7287.
- 6 J. Rodríguezdiáz, A. Rubidelcampo and M. J. Yebra, *Bioengineered*, 2012, **3**, 339–342.
- 7 A. H. L. Koenderman, P. L. Loppen, A. M. M. Lian and D. H. V. D. Eijnden, *Biomed. Chromatogr.*, 1986, **1**, 104–108.
- 8 G. L. French, *Int. J. Antimicrob. Agents*, 2010, **36**, S3–S7.
- 9 I. M. Gould, *Int. J. Antimicrob. Agents*, 2010, **36**, S1–S2.
- 10 R. E. Isturiz, *Int. J. Antimicrob. Agents*, 2010, **36**(5), S19–S22.
- 11 R. G. Masterton, *Int. J. Antimicrob. Agents*, 2010, **36**(5), S15–S18.
- 12 T. R. Walsh, *Int. J. Antimicrob. Agents*, 2010, **36**(3), S8.



- 13 G. L. Moraes, G. C. Gomes, P. R. Monteiro de Sousa, C. N. Alves, T. Govender, H. G. Kruger, G. E. Maguire, G. Lamichhane and J. Lameira, *Tuberculosis*, 2015, **95**, 95–111.
- 14 R. Mehra, C. Rani, P. Mahajan, R. A. Vishwakarma, I. A. Khan and A. Nargotra, *ACS Comb. Sci.*, 2016, **18**(2), 100–116.
- 15 P. Doig, P. A. Boriacksjodin, J. Dumas, J. Hu, K. Itoh, K. Johnson, S. Kazmirski, T. Kinoshita, S. Kuroda and T. O. Sato, *Bioorg. Med. Chem.*, 2014, **22**, 6256–6269.
- 16 S. Wang, F. Xuan, Y. Liu, X. W. Liu, W. Lin, J. Fang and G. W. Peng, *Carbohydr. Res.*, 2015, **413**, 70–74.
- 17 N. Vithani and B. Prakash, *Encyclopedia of Inorganic and Bioinorganic Chemistry*, 2015.
- 18 C. Rani, R. Mehra, R. Sharma, R. Chib, P. Wazir, A. Nargotra and I. A. Khan, *Tuberculosis*, 2015, **95**(6), 664–677.
- 19 H. Barreateau, A. Kovac, A. Boniface, M. Sova, S. Gobec and D. Blanot, *FEMS Microbiol. Rev.*, 2008, **32**, 168–207.
- 20 M. A. Pathan, A. S. Jamkhandi and A. K. S. Katti, *Int. J. Pharm. Sci. Res.*, 2014, **5**(4), 1493.
- 21 M. Kotnik, P. S. Anderlüh and A. Prezelj, *Curr. Pharm. Des.*, 2007, **13**, 2283–2309.
- 22 C. R. Raetz and C. Whitfield, *Biochemistry*, 2002, **71**, 635–700.
- 23 Z. Zhang, E. M. M. Bulloch, R. D. Bunker, E. N. Baker and C. J. Squire, *Acta Crystallogr.*, 2009, **65**, 275–283.
- 24 V. K. Singh, K. Das and K. Seshadri, *PLoS One*, 2012, **7**, e43969.
- 25 J. Min, D. Lin, Q. Zhang, J. Zhang and Z. Yu, *Eur. J. Med. Chem.*, 2012, **53**, 150–158.
- 26 L. R. Olsen, M. W. Vetting and S. L. Roderick, *Protein Sci.*, 2007, **16**, 1230–1235.
- 27 D. Patin, M. Bayliss, D. Menginlecreulx, P. Oyston and D. Blanot, *Arch. Microbiol.*, 2015, **197**, 1–8.
- 28 R. Mehra, R. Sharma, I. A. Khan and A. Nargotra, *Eur. J. Med. Chem.*, 2015, **92**, 78–90.
- 29 A. M. Gehring, W. J. Lees, D. J. Mindiola, C. T. Walsh and E. D. Brown, *Biochemistry*, 1996, **35**, 579–585.
- 30 R. Sharma, M. R. Lambu, U. Jamwal, C. Rani, R. Chib, P. Wazir, D. Mukherjee, A. Chaubey and I. A. Khan, *J. Biomol. Screening*, 2016, **21**(4), 342–353.
- 31 L. R. Olsen, M. W. Vetting and S. L. Roderick, *Protein Sci.*, 2007, **16**, 1230–1235.
- 32 X. Li, C. Qi, P. Wei, L. Huang, J. Cai and Z. Xu, *Prep. Biochem. Biotechnol.*, 2016, accepted.
- 33 B. Hove-Jensen, *J. Bacteriol.*, 1992, **174**, 6852–6856.
- 34 B. Hove-Jensen, *Mol. Microbiol.*, 1989, **3**, 1487–1492.
- 35 Y. Zhou, Y. Xin, S. Sha and Y. Ma, *Arch. Microbiol.*, 2011, **193**, 751–757.
- 36 W. Zhang, V. C. Jones, M. S. Scherman, S. Mahapatra, D. Crick, S. Bhamidi, Y. Xin, M. R. Mcneil and Y. Ma, *Int. J. Biochem. Cell Biol.*, 2008, **40**, 2560–2571.
- 37 J. Zhou, L. Huang, J. Lian, J. Sheng, J. Cai and Z. Xu, *Biotechnol. Lett.*, 2010, **32**, 1481–1486.
- 38 Y. Zhou, Y. Xin, S. Sha and Y. Ma, *Arch. Microbiol.*, 2011, **193**, 751–757.
- 39 Y. Zhai, M. Liang, J. Fang, X. Wang, W. Guan, X.-w. Liu, P. Wang and F. Wang, *Biotechnol. Lett.*, 2012, **34**, 1321–1326.
- 40 C. Meersschaert, E. Thiry and P. P. Pastoret, *Rev. Elev. Med. Vet. Pays. Trop.*, 1988, **41**, 235–242.
- 41 R. C. Troutman and C. Barraquer, *Cornea*, 1982, **1**(3), 251–254.
- 42 K. Vanommeslaeghe, E. Hatcher, C. Acharya, S. Kundu, S. Zhong, J. Shim, E. Darian, O. Guvench, P. Lopes and I. Vorobyov, *J. Comput. Chem.*, 2010, **31**, 671–690.
- 43 W. Humphrey, A. Dalke and K. Schulten, *J. Mol. Graphics*, 1996, **14**, 33–38.
- 44 T. Unger, Y. Jacobovitch, A. Dantes, R. Bernheim and Y. Peleg, *J. Struct. Biol.*, 2010, **172**, 34.
- 45 d. E. F. Van and J. Löwe, *J. Biochem. Biophys. Methods*, 2006, **67**, 67–74.
- 46 Y. Zhai, M. Liang, J. Fang, X. Wang, W. Guan, X. W. Liu, P. Wang and F. Wang, *Biotechnol. Lett.*, 2012, **34**, 1321–1326.
- 47 L. R. Olsen and S. L. Roderick, *Biochemistry*, 2001, **40**(7), 1913–1921.
- 48 L. Yongmeng, Z. Yan, M. Yufang and L. Xuebing, *Carbohydr. Res.*, 2011, **346**, 1714–1720.
- 49 R. A. Laskowski, M. W. MacArthur, D. S. Moss and J. M. Thornton, *J. Appl. Crystallogr.*, 1993, **26**, 283–291.
- 50 R. Lüthy, J. U. Bowie and D. Eisenberg, *Nature*, 1992, **356**, 83–85.
- 51 L. R. Olsen and S. L. Roderick, *Biochemistry*, 2001, **40**, 1913–1921.

