



Cite this: *Phys. Chem. Chem. Phys.*,
2016, **18**, 21381

Vapor pressure of ionic liquids at low temperatures from AC-chip-calorimetry

Mathias Ahrenberg,^a Martin Beck,^b Christin Neise,^c Olaf Keßler,^{bd} Udo Kragl,^{cd} Sergey P. Verevkin^{cd} and Christoph Schick^{*ad}

The very low vapor pressure of ionic liquids is challenging to measure. At elevated temperatures the liquids might start to decompose, and at relatively low temperatures the vapor pressure becomes too low to be measured by conventional methods. In this work we developed a highly sensitive method for mass loss determination at temperatures starting from 350 K. This technique is based on an alternating current calorimeter equipped with a chip sensor that consists of a free-standing SiN_x-membrane (thickness <1 μm) and a measuring area with lateral dimensions of the order of 1 mm. A small droplet (diameter ca. 600 μm) of an ionic liquid is vaporized isothermally from the chip sensor in a vacuum-chamber. The surface-to-volume-ratio of such a droplet is large and the relative mass loss due to evaporation is therefore easy to monitor by the changing heat capacity (J K⁻¹) of the remaining liquid. The vapor pressure is determined from the measured mass loss rates using the Langmuir equation. The method was successfully tested for the determination of the vapor pressure and the vaporization enthalpy of an archetypical ionic liquid 1-ethyl-3-methylimidazolium bis(trifluoromethylsulfonyl)imide ([EMIm][NTf₂]). The data set created in this way in an extremely broad temperature range from 358 K to 780 K has allowed the estimation of the boiling temperature of [EMIm][NTf₂]. The value (1120 ± 50) K should be considered as the first reliable boiling point of the archetypical ionic liquid obtained from experimental vapor pressures measured in the most possible close proximity to the normal boiling temperature.

Received 23rd March 2016,
Accepted 8th July 2016

DOI: 10.1039/c6cp01948j

www.rsc.org/pccp

Introduction

Ionic liquids (ILs) exhibit extremely low vapor pressures even at elevated temperatures.^{1–6} Moreover, they tend to decompose before reaching a measurable vapor pressure by using even well-established conventional techniques.^{7,8} Thus the reliable vapor pressure determination of ILs is challenging. This constellation of low vapor pressures at the onset temperature of decomposition requires highly sensitive techniques that are able to detect vapor pressures below the onset temperature of decomposition, *i.e.* <<1 Pa, in a reasonable time. This narrows the accessible temperature range of vapor pressure determination using common methods, *e.g.* the Knudsen effusion method or thermogravimetric analysis (TGA), to a few tens of Kelvin.^{1,2,9,10} In the last decade, many efforts have been undertaken to extend the temperature range of the vapor pressure studies to lower as

well as higher temperatures. For example, a reliable method based on the measurement of evaporation rates using a quartz-crystal microbalance has allowed the measurements on ILs to be started even at 350 K.¹¹ The commercially available TGA instruments were adjusted for the determination of IL mass loss rates up to temperatures close to the temperature of decomposition.^{8,9} Ahrenberg *et al.*¹² successfully combined thermogravimetry with calorimetry and developed a differential fast scanning calorimetry (DFSC) method¹³ for vapor pressure determination spanning a temperature range of about 400 K for thermally stable ILs.¹² The latter method is based on the evaporation of small droplets (diameter is about 100 μm) from a calorimetric chip-sensor by using the proportionality between the measured heat capacity [J K⁻¹] and sample mass of the remaining droplet. The miniaturized sample size results in a large surface-to-volume-ratio of the droplet. In combination with the high heating and cooling rates applicable in DFSC this allows for vapor pressure determination far above the onset of decomposition as determined using slow scanning methods, *e.g.* TGA. A large surface-to-volume-ratio of such small droplets is the key to success since small amounts of evaporated substance yield a large relative mass change, which is quick and easy to detect. However, the DFSC technique is restricted to lower temperatures due to the long measuring times and the

^a Institute of Physics, University of Rostock, Albert-Einstein-Str. 23-24, 18059 Rostock, Germany. E-mail: christoph.schick@uni-rostock.de

^b Faculty of Mechanical Engineering and Marine Technology, University of Rostock, Albert-Einstein-Str. 2, 18059 Rostock, Germany

^c Institute of Chemistry, University of Rostock, Albert-Einstein-Str. 3a, 18059 Rostock, Germany

^d Competence Centre CALOR, Faculty of Interdisciplinary Research, University of Rostock, Albert-Einstein-Str. 25, 18059 Rostock, Germany



related instrumental stability issues. In this work, in order to extend the measurement range to lower temperatures, an alternating current (AC) chip calorimetry method¹⁴ has been adjusted and tested for vapor pressure measurements at low temperatures down to 350 K in a reasonable time and with good instrumental stability.

Vapor pressure measurements on an archetypical ionic liquid 1-ethyl-3-methylimidazolium bis(trifluoromethylsulfonyl)imide ([EMIm][NTf₂]) have been a popular endeavor in the last decade. A lot of reliable data on this IL have been reported in the literature.^{1,7,10,12,15,16} Thus this IL becomes a useful reference compound for testing new procedures. The focus of the current work is to develop AC-chip calorimetry for IL vapor pressure measurements at possibly low temperatures. The detailed technical description of the AC-chip calorimeter has been published elsewhere.^{14,17–19} However, this technique has never been thought of for vapor pressure measurements. In this work, we suggest a possible method to measure mass loss rates and vaporization enthalpies indirectly by heat capacity measurements of the sample.

Heat capacities measured using AC chip calorimetry were treated using the most recent model proposed by Rydh *et al.*²⁰ This model was validated using data on crystalline NaCl where reliable heat capacities are well established. Then, this model was successfully applied to determine the mass loss rates of [EMIm][NTf₂] droplets at temperatures between 358 K and 373 K. New experimental data on vapor pressures for the test IL were consistent with those measured by the DFSC method in our previous study,¹² as well as with the data available in the literature.^{1,7,10,15,16}

The combination of new low temperature AC-calorimetric data with the previous high-temperature DFSC vapor pressure data has provided a unique data set for [EMIm][NTf₂] in an extremely broad temperature range from 358 K to 780 K. An advantage of such a broad range is that by fitting the vapor pressure data with the Clarke–Glew-equation,¹² the reliable thermodynamic parameters of vaporization (standard molar enthalpy of vaporization, standard molar free enthalpy of vaporization and the difference between the standard molar heat capacity of the liquid and standard molar heat capacity of the gas) can be derived.

Moreover, due to the extremely broad temperature range, the estimation of the boiling temperature of [EMIm][NTf₂] from the fit of the Clarke–Glew-equation can be considered as the first reliable boiling point of the archetypical ionic liquid obtained from the experimental vapor pressures measured in the most possible close proximity to the normal boiling temperature.

Experimental

Materials

The sample of 1-ethyl-3-methylimidazolium bis(trifluoromethylsulfonyl)imide ([EMIm][NTf₂]) used for the calorimetric studies was of commercial origin (IOLITEC, Germany, purity 98%). The purity of the commercial sample was checked by NMR and IR spectroscopy. No impurities were detected in both the spectra. Prior to the measurement, it was exposed to ultra-high vacuum ($<10^{-7}$ Pa) at 358 K for 120 minutes in order to remove possible traces of volatile impurities and water. The sample was additionally conditioned by repeating the full measurement cycle three times for one sample, see the Results and discussion section for details. No changes in the evaporation behavior were detected. The sample of NaCl, used for the validation of heat capacity determination, was purchased from Euro OTC Pharma GmbH, Germany, with a purity of 99.94%.

AC chip-calorimetry and the experimental setup

AC chip calorimetry has great potential in the mass loss rate determination of low-volatile compounds due to its high sensitivity and ability to perform isothermal measurements. A detailed description of the used AC-chip calorimeter can be found elsewhere.^{14,18} Our current setup is similar to that described by Huth *et al.*^{17,18} The sensors XI39347 used for the measurements in this work are chip-nanocalorimeters purchased from Xensor Integration B.V., NL. These sensors are based on a sub-micron thick SiN_x-membrane with an active area of 1×1 mm² (Fig. 1) mounted to a TO5 housing.²¹ An oscillating power coming from the oscillator output of a lock-in amplifier (Signal Recovery 7265) is applied to the heaters on the membrane of such a chip-calorimeter (Fig. 1) to heat the

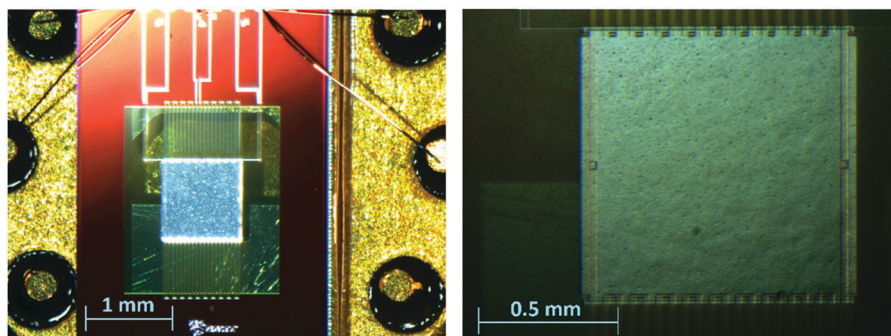


Fig. 1 Left: Chip-calorimeter mounted on a TO5-housing. Right: The 1×1 mm² active area of the large area calorimeter XI39347. The heater stripes can be seen to the left and right of the active area. 20 thermopiles are located around the active area. The area is covered by a very thin aluminum layer for better heat transfer and thus a homogeneous temperature distribution across the area during the temperature oscillation.



membrane. 20 thermocouples (hot junctions located around the edge of the active area of the membrane; cold junctions on the passive frame) are used to measure the response to the oscillating power. The thermopile voltage is given to the inputs of the lock-in amplifier which locks to the 2nd harmonic of the oscillator frequency and is set to measure the magnitude and the phase of the thermopile voltage.

We use two chip-calorimeters either in a differential setup (Fig. 2) or each separately. Even the oscillator output voltage is given to both chip-calorimeters in series, the thermopile voltage can be measured in single and differential mode. The single mode measurement will be of importance if possible drifts of the signal have to be taken into account.

The chip-calorimeters are placed in a copper-block that can be heated and cooled in a temperature range from 90 K to 500 K. Thus the copper-block acts as the temperature bath for the calorimeters. The copper-block hangs in a CF 100 double-cross ultra-high vacuum (UHV) chamber that can be evacuated down to $< 10^{-7}$ Pa. More details about the setup can be found elsewhere.^{17,22}

The droplet of a liquid sample is placed on the sensor with a 10 μm thin wire that is first dipped into the IL and then the sticking droplet is wiped off from the wire to the active area of the sensor. The resulting droplet forms a spherical cap on the membrane of the sensor. Solid samples are prepared accordingly. Adhesive or electrostatic forces allow us to pick up

small pieces of the material with the copper wire and place it on the membrane.

As a rule, the geometry of the liquid droplet changes due to thermal expansion or evaporation, if heated to high temperatures. However, for the reliable vapor pressure determination the liquid–vacuum interfacial area has to be ideally constant (see eqn (1) below). Therefore, the sensors are locally coated with silica hydroxyapatite nanoparticles (provided by Th. Gerber, University of Rostock)²³ to pin the droplet on the membrane at the location of the coated area.¹² Thus, the edge of an evaporating droplet remains pinned until the droplet becomes so thin that it breaks into smaller droplets.¹²

Heat capacity determination

The IL-samples are evaporated from the chip in an ultra-high vacuum and thus the Lagmuir-equation for vaporization from the open surface holds:

$$-\frac{dm}{dt} = \alpha P_{\text{vap}}(T_{\text{vap}}) A_{\text{LV}} \sqrt{\frac{M_{\text{IL}}}{2\pi RT_{\text{vap}}}}, \quad (1)$$

where m is the mass of the sample, P_{vap} is the vapor pressure of the IL, T_{vap} is the temperature of evaporation, A_{LV} is the area of the liquid–vacuum interface of the sample, M_{IL} is the molar mass of the IL, R is the universal gas constant and α is the vaporization coefficient, that is usually assumed to be unity in a vacuum.

Heat capacity $C_p(t, T)$ of the IL-sample is monitored during the vaporization process. If $C_p(t, T) = m(t)C_p(T)$ holds, eqn (1) can be written as

$$-\frac{dm}{dt} = \alpha P_{\text{vap}}(T_{\text{vap}}) A_{\text{LV}} \sqrt{\frac{M_{\text{IL}}}{2\pi RT_{\text{vap}}}} = \frac{1}{c_p(T_{\text{vap}})} \frac{dC_p(T_{\text{vap}})}{dt}. \quad (2)$$

At a constant evaporation temperature T_{vap} the two unknown values, the area of the liquid–vacuum interface A_{LV} of the sample and its heat capacity C_p at each time of the measurement, are required to determine the vapor pressure. Eqn (2) holds for samples with a well-defined liquid–vacuum interfacial area. If the area changes with time a functional description of A_{LV} has to be done. However, AC chip-calorimetry is sensitive enough to determine the extremely small mass loss during fractional sample evaporation, leading to negligible changes in the interfacial area. Due to the very high sensitivity of AC chip-calorimetry to smallest mass-losses, it is even possible to use the same pinned droplet for the experimental runs at several temperatures.

AC chip-calorimetry measures the thermopile voltage, which is (in the differential setup) proportional to the heat capacity of the sample. Huth *et al.*¹⁸ developed a sophisticated method to calculate the heat capacity from the thermopile voltage. However, several specific parameters required for this method are not easy to determine. Rydh *et al.*²⁰ suggested a more convenient way. Based on the preceding works of Sullivan and Seidel,²⁴ Greene *et al.*,²⁵ Riou *et al.*²⁶ and Velichkov *et al.*²⁷ they developed an analytical description of the frequency

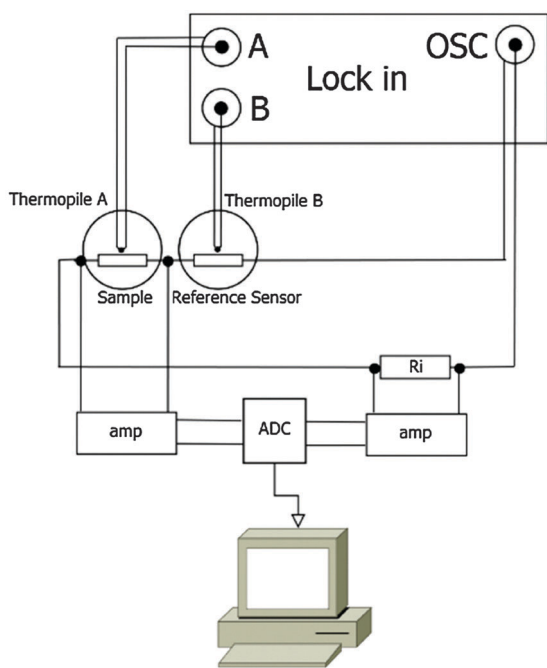


Fig. 2 Scheme of the electrical setup. The oscillating power from a lock-in is applied to the heaters of the sensors and a known pre-resistor in series. From the measured voltage-drops over the known resistor and over the sample heater the power as well as the heater resistance of the sample sensor can be determined. The signals are converted by a digital-to-analogue-converter and processed by a LabView™-program. The thermopile voltage in response to the applied oscillating power is measured by the lock-in at the 2nd harmonic of the oscillator frequency.



dependence of the measured temperature amplitude, $T_{AC,\omega}$, on heat capacities and thermal conductance of the system that consists of a sensor, a sample and a bath:

$$T_{AC,\omega} = \frac{P_0}{\sqrt{(\omega(C_0 + C_{m,eff} + (1-g)C_s))^2 + (K_{e,eff} + gK_i)^2}}, \quad (3)$$

where ω is the angular frequency of power modulation, P_0 is the applied power, which is measured directly, C_s is the heat capacity of the sample, $C_{m,eff}$ is the effective heat capacity of the membrane, C_0 is the heat capacity contribution from other sources, e.g. the surrounding gas, $K_{e,eff}$ is the effective thermal conductance of the membrane, K_i is the thermal coupling between the membrane and the sample, and g is a frequency-dependent parameter characterized by the internal time-constant of the chip-calorimeter to account for the thermal decoupling of the sample at high frequency.

The phase of the response to the temperature modulation is given by

$$\tan \varphi = \frac{\omega(C_0 + C_{m,eff} + (1-g)C_s)}{K_{e,eff} + gK_i}. \quad (4)$$

The effective heat capacity of the membrane $C_{m,eff}$ is calculated using

$$C_{m,eff} = \frac{C_m \sinh(\alpha) - \sin(\alpha)}{\alpha \cosh(\alpha) - \cos(\alpha)}, \quad (5)$$

where C_m is the heat capacity of the membrane and $\alpha = \sqrt{2\omega\tau_m}$ accounts for the finite time-constant τ_m of the membrane-to-bath heat transfer and the frequency ω of the applied power.

The effective thermal conductance of the membrane $K_{e,eff}$ is calculated using

$$K_{e,eff} = K_e \frac{\alpha \sinh(\alpha) + \sin(\alpha)}{2\cosh(\alpha) - \cos(\alpha)}, \quad (6)$$

where K_e is the thermal conductance of the membrane. The parameter g in eqn (3) and (4) accounts for the finite thermal contact between the sample and the membrane and is calculated using

$$g = \frac{(\omega\tau_i)^2}{1 + (\omega\tau_i)^2}, \quad (7)$$

where τ_i is the internal sample-to-membrane time-constant.

The parameters τ_i and τ_m can be expressed by $\tau_i = \frac{C_s}{K_i}$ and $\tau_m = \frac{C_m}{K_e}$. Thus, in the current model five fitting parameters, K_e , K_i , C_m , C_0 , C_s , are needed to fit the measured data in terms of temperature amplitude to the analytical expression. The temperature amplitude is obtained from the measured thermopile amplitude applying the calibration function of the thermopiles.²⁸

Determination of the interfacial area

The area of the liquid–vacuum interface A_{LV} of the sample required for calculation of the IL vapor pressure according to

eqn (2) is usually derived from the lateral dimensions of a sample on the chip-calorimeters measured with the help of an optical microscope. Unfortunately, in this study due to the geometry of the TO5-housing of the current sensor type the height of such a pinned droplet-shaped sample is not accessible, like it is possible for sensors on a ceramics housing.¹² However, knowledge of the heat capacity of the sample and the lateral dimensions allows us to calculate the height h from

$$m = \frac{C_p(T)}{c_p(T)} = \rho(T)V = \rho(T)\frac{\pi h}{6}(3a^2 + h^2), \quad (8)$$

where $V = \frac{\pi h}{6}(3a^2 + h^2)$ is the volume of a spherical cap, like for a supported liquid sample. In eqn (8) we neglected the marginal temperature dependent expansion of the volume of the sample. ρ is the density and a is the radius of the contact area between the sample and the support, which is circular in the ideal case. However, commonly the contact area is arbitrary shaped and an optical microscope has to be used for the determination of the lateral dimension of the sample. A local coating on the membrane forces the liquid droplet to attain always the same lateral shape. Thus, the contact area has to be determined for a certain sensor only once. For an ideal spherical cap the liquid–vacuum interfacial area A_{LV} is calculated using

$$A_{LV} = \pi(2a^2 + h^2) \quad (9)$$

Validation of the model

Small NaCl-crystals with known absolute heat capacities provide a good way to test the applicability of the model of Rydh *et al.*²⁰ to our measuring system. The dimensions of these crystals can easily be determined with an optical microscope (Olympus BX41) due to their regular cubic lattice structure, which persists even for bulk samples. However, since the active area of the chip-calorimeters is $1 \times 1 \text{ mm}^2$, the crystals have to be essentially small. Moreover, the heat capacity of the NaCl-crystals should keep the order of that of the ionic liquid droplets to maintain comparability. Liquid droplets have a very good thermal contact to the membrane, while NaCl-crystals have not. To solve this problem we use a small amount of Apiezon-N grease to attach the crystals to the membrane for better thermal contact. It has been shown that the additional contribution to heat capacity coming from the grease is negligibly small compared to the heat capacity of the crystals.

From the dimensions of the crystals, and thus their volumes, the well-known density and specific heat capacity at a certain temperature T , their heat capacities can be determined. Thus, again for the reason of comparability, the NaCl-measurements are done at a temperature of $T = 323 \text{ K}$.

A NaCl-crystal-loaded and an empty chip-calorimeter are introduced to the UHV-chamber, which is evacuated down to $<10^{-7} \text{ Pa}$. The copper-block is heated to 323 K and the thermopile voltage for the sample and reference sensor is measured in single mode as a function of the frequency of the applied power. For the details of the experimental setup we



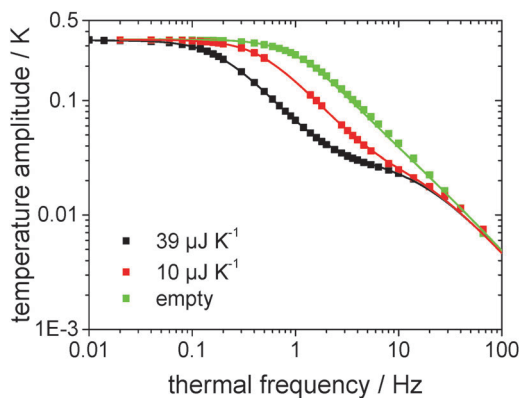


Fig. 3 Temperature amplitude over thermal frequency from measurements of two different NaCl-crystal-samples and the empty sensor (squares) as well as the corresponding functions determined by the analytical description (eqn (3), lines).

refer to Ahrenberg *et al.*¹⁷ The thermal frequency is scanned from 0.02 Hz up to 600 Hz.

Fig. 3 shows the measured and fitted values for two NaCl-crystals of different dimensions as well as for the empty chip measurement in a log-log-plot of temperature amplitude over thermal frequency. It has turned out that the Rydh *et al.*²⁰ model is able to describe the measured data in a wide frequency range. However, for relatively high frequencies the model starts to fail and the thermal frequency range shown in Fig. 3 has been limited to 200 Hz. The heat capacities of the crystals derived from the model are $(39 \pm 1) \mu\text{J K}^{-1}$ and $(10 \pm 1) \mu\text{J K}^{-1}$, for the black and the red data in Fig. 3, respectively, which are close to the values determined using an optical microscope ($(41 \pm 1) \mu\text{J K}^{-1}$ and $(9 \pm 1) \mu\text{J K}^{-1}$, respectively). Such a good agreement of the results with those from the optical method has proven the applicability of the model to the chip sensors for heat capacity determination.

Heat capacity of the [EMIm][NTf₂]-droplet

The absolute heat capacity of the [EMIm][NTf₂]-droplet has to be known for mass-loss rate measurements (see eqn (1)) at each time and each temperature. Thus the measured thermopile

voltage at a certain frequency has to be related to the absolute heat capacity of the IL-droplet. Since the relation is non-linear,¹⁷ several measurements of the frequency-dependent thermopile voltage of IL-droplets with distinct masses have to be carried out. Each measurement is fitted using the above described and validated model (according to eqn (3)) to derive the heat capacities of the IL-droplet. Fig. 4 shows the measured and fitted frequency-dependent values of the temperature amplitude and the phase for four droplets of different sample masses on the sensor as well as for the empty sensor. As can be seen, the model is able to describe the measured data and Fig. 5 (fit + data) gives the relation between heat capacity and measured thermopile magnitude for a certain frequency of temperature modulation (see next paragraph). The derived functional relation can be used to calculate the heat capacity of the IL-droplet during the evaporation process from the single mode thermopile magnitude at each time.

The frequency of temperature modulation plays an important role in heat capacity determination. In Fig. 4b the linear behavior of the phase at low frequency corresponds to a thermally well-connected sample whereas the behavior at high frequency corresponds to a thermally insufficiently coupled sample. However, the frequency-dependent behavior shifts, *e.g.* with decreasing sample mass towards higher frequencies. In other words, a smaller sample becomes thermally decoupled at a higher frequency as compared to a larger sample, as expected. Since the mass of the sample decreases during the evaporation experiments, a shift of the thermal decoupling is also expected. We use a thermal frequency of 1 Hz for the evaporation experiments, where thermal decoupling sets in for intermediate samples sizes (C_p ca. $12 \mu\text{J K}^{-1}$) to ensure that 100% of the mass of smaller samples is contributing to the measured thermopile magnitude. This argument provides the reason why to exclude the largest droplet measured, as shown in Fig. 4, from the fit as shown in Fig. 5.

Results and discussion

An [EMIm][NTf₂]-droplet on the chip-calorimeter in an UHV was studied at different temperatures between 358 K and 373 K. The lowest limit of the working temperatures was at about

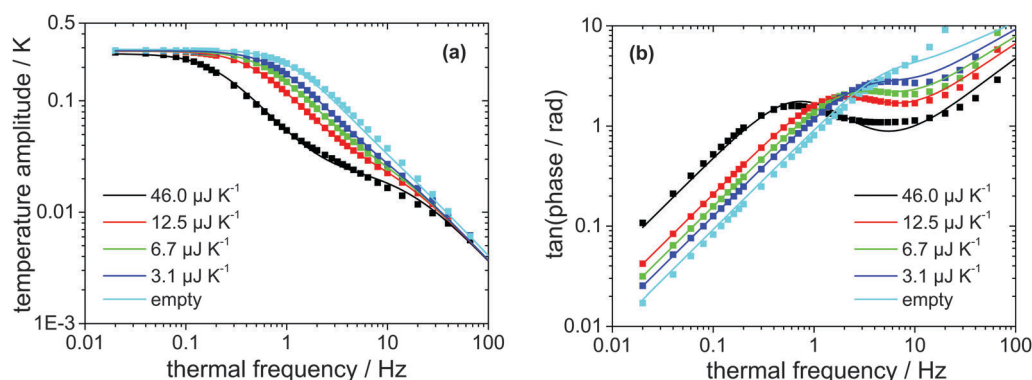


Fig. 4 (a) Measured (squares) and fitted (lines, using eqn (3)) temperature amplitude over thermal frequency of four different samples of [EMIm][NTf₂] with distinct masses as well as for the empty sensor. (b) Corresponding measured (squares) and fitted (lines, using eqn (4)) phase over thermal frequency.



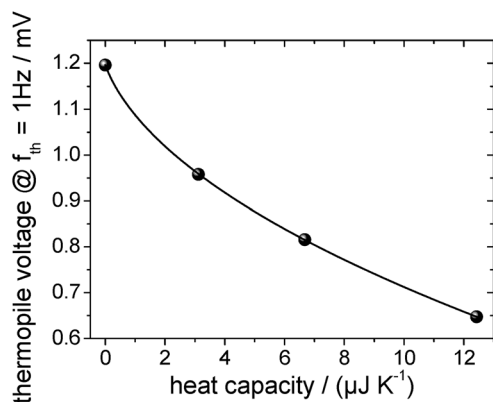


Fig. 5 Measured thermopile magnitude at a thermal frequency of 1 Hz over determined heat capacity of the different [EMIm][NTf₂]-droplets. The thermopile magnitude is measured in single mode as can be seen from the decreasing thermopile magnitude with increasing heat capacity.

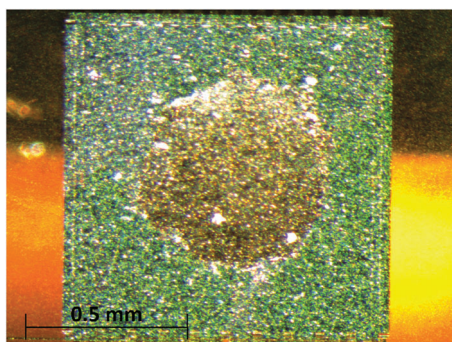


Fig. 6 Droplet of [EMIm][NTf₂] on the active area of the chip-calorimeter.

358 K where the mass-loss is measurable on a timescale of few hours.

Fig. 6 shows the initial droplet on the chip-calorimeter. The lateral dimensions are determined for different cross sections and averaged subsequently. This yields a base radius of the liquid-membrane interface of $a = (318 \pm 20) \mu\text{m}$.

The thermopile voltage is measured in differential mode which has the advantage of higher sensitivity compared to the

single mode measurement of the sample sensor. The additional single mode measurements of the reference sensor, which is empty, have the advantage to account for possible drifts in the signal caused by the electronics.

The measurement proceeds as follows: first the copper block, including the chip-calorimeters, is heated to a certain temperature (e.g. 358 K). According to preliminary measurements at this temperature the [EMIm][NTf₂]-sample of several hundred nanograms starts to evaporate with a sufficient rate. If the temperature has stabilized at 358 K, an isothermal measurement is started and the software for the data acquisition switches among the differential measurement and the empty sensor single measurement according to a predefined time interval, whose length is generally stipulated by the mass-loss rate at the selected temperature of evaporation.

For example, the measurement at 358 K is performed within approx. five hours in order to obtain a reasonable mass-loss for rate determination. After completing the measurement at 358 K, the isothermal studies are continued in 5 K steps up to 373 K. As a rule, the measurement time at 373 K has not exceeded approx. 3.5 hours, which is still long enough and potentially the AC chip-calorimeter is able to be applied for measurements at higher temperatures than 373 K. Unfortunately, the current construction of the measuring cell consists of a large-sized temperature bath containing the chips. The maximum heating rate of 1 K min^{-1} and a stabilization time of about 30 minutes yield already a significant mass-loss during the temperature ramping and stabilization. In this respect, for studies at higher temperatures the device requires modifications.

The mass-loss measurements are repeated twice using one and the same sample, yielding a set of three mass-loss values per evaporation temperature. During the course of the whole measurement the thermopile magnitude of the sample decreased to about 33% of the initial value.

Fig. 7 shows the thermopile magnitude of the empty sensor single measurements over time, which is used to detect and correct the possible signal drift. It can clearly be seen that the thermopile magnitude drifts by about $1 \mu\text{V}$ within 1.5 days. The thermopile magnitudes of sample-loaded single measurements are corrected accordingly. The change in the thermopile magnitude with temperature is due to the temperature-dependent heat capacity

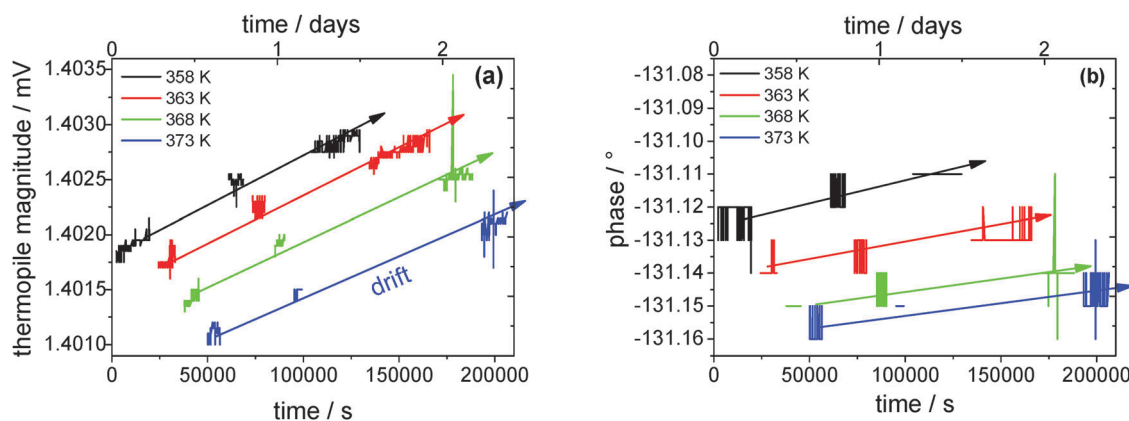


Fig. 7 (a) Thermopile magnitude and (b) phase over time of the empty reference sensor. The lines are guides to the eye.



of the system (sample + sensor) itself. Surprisingly, the phase data do not drift at all within the resolution limit of $\pm 0.01^\circ$ during the course of an evaporation experiment. This extremely high stability is due to the employed lock-in technique. An oscillating power at fixed frequency is applied to the sensor and the thermopile signal is detected exclusively at the second harmonic of this frequency. In this way contributions from low and high frequency noise, drifts and electrical noise, respectively, are minimized.

One remaining possibility for a drifting thermopile magnitude is a changing heater resistance. The doped silicon stripes on the membrane used for heating are not long-time stable at elevated temperatures. This was detected in earlier work.²⁹ The applied oscillator voltage is dropping over the two heaters of the sensors and a very stable pre-resistor in series (see Fig. 2). If the heater resistances increase a larger fraction of the oscillator voltage drops across the sensors and the thermopile voltage increases. As a consequence, the heater resistance cannot be used as a reference for temperature determination directly on the membrane, like it was used in earlier works at low temperatures.²²

We use the readout of the PT100 attached to the copper block (temperature bath) for temperature determination. Since the measurements are performed in a vacuum a possible temperature gradient across the copper block is not expected for isothermal measurements.

The drift-corrected thermopile magnitude is used for heat capacity calculation using the derived fit function as determined from the data in Fig. 5. Fig. 8 shows the heat capacity change over time for a first sample run from 358 K to 373 K in 5 K-steps. From the heat capacity at the start of the measurement the height h of the droplet is determined to be $h_{\text{start}} = 4.94 \mu\text{m}$ using eqn (8), which is very shallow compared to the lateral dimension of the droplet of base radius $a = (318 \pm 20) \mu\text{m}$. At the end of the measurement the height has decreased to $h_{\text{end}} = 1.17 \mu\text{m}$. The liquid–vacuum interfacial area $A_{\text{LV}} = \pi \cdot (a^2 + h^2)$ for the pinned droplet has changed during the course of the measurement from $A_{\text{LV,start}} = 3.1776 \times 10^{-7} \text{ m}^2$ to $A_{\text{LV,end}} = 3.1769 \times 10^{-7} \text{ m}^2$, which corresponds to a change of 0.2% and is negligible. Generally, for droplets, which are very shallow, the change of the interfacial area during evaporation can be practically neglected in the series of subsequent experiments.

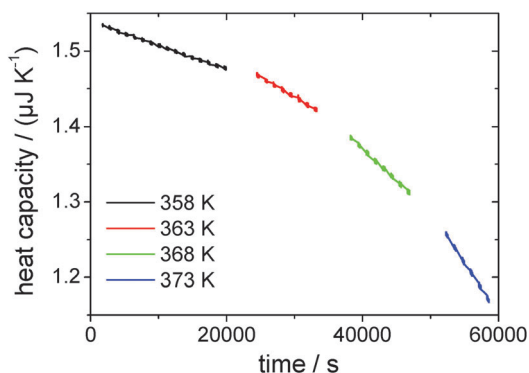


Fig. 8 Heat capacity over time for the first four isothermal measurements, representing a complete series of temperatures.

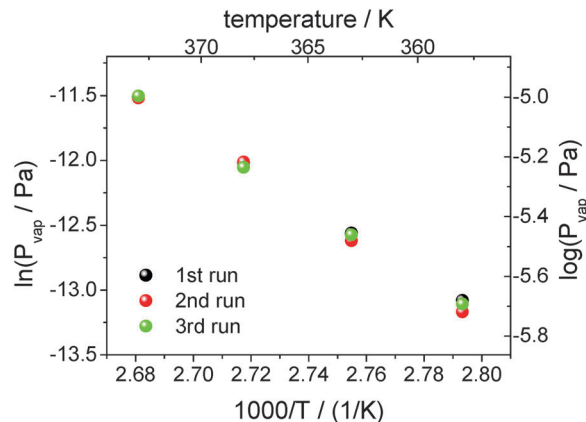


Fig. 9 Logarithm of the vapor pressure of [EMIm][NTf₂] against reciprocal temperature. The vapor pressure is determined from three measurements at each temperature.

From linear fits to the decreasing heat capacity (see Fig. 8), the rate of heat capacity loss and consequently the vapor pressure according to eqn (2) can be determined (see Fig. 9). As can be seen, the vapor pressure of [EMIm][NTf₂] at *e.g.* 358 K is about $1.3 \times 10^{-6} \text{ Pa}$. Measurements of such low vapor pressures by *e.g.* common TGA take several days, provided that the instrument is stable over such a long time. In contrast, with the AC chip-calorimetry we are able to determine the vapor pressure at 358 K within a few hours. Other conventional methods (except for QCM) totally fail to measure such extremely low vapor pressures. The measurable vapor pressure of [EMIm][NTf₂] at 358 K already came close to the pressure in the vacuum chamber and one would expect the liquid to start to boil. However, this does not seem to be the case because the bubble forming would be clearly recognized by turbulent distortions of the measured signal. The phenomenon of superheating prevents boiling from taking place as the sample is in a vacuum chamber free of nucleation sites.

The scatter in the vapor pressure data shown in Fig. 9 cannot be significantly reduced by statistics. Each point is determined from a dataset containing about 10 000 tuples of time, thermopile magnitude and phase. The relative standard error is about 1% for each point. More data, *i.e.* longer measurements, would not improve the error. Error-contributions from different origins may be responsible for the observed data scatter, *e.g.* uncertainty of the temperature determination with the PT100 or more possibly the uncertainty of heat capacity determination from the fit function (see Fig. 5). However, it has to be mentioned that vapor pressures scatter within 1–3% measured even by conventional techniques that are considered to be acceptable.

From the vapor pressures in Fig. 9 the vaporization enthalpy $\Delta_1^{\text{g}}H_{\text{m}}^0$ at the average temperature of the mass-loss determinations was calculated by

$$\Delta_1^{\text{g}}H_{\text{m}}^0(T_{\text{avg}}) = -R \frac{d \ln(P_{\text{vap}})}{d \frac{1}{T}} \quad (10)$$

Fig. 10 shows values of vaporization enthalpies $\Delta_1^{\text{g}}H_{\text{m}}^0$ measured in three runs from 358 K to 373 K and adjusted to the reference



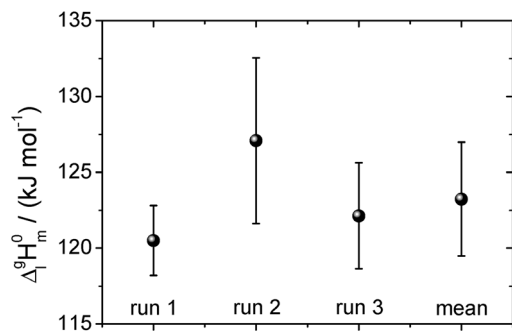


Fig. 10 The vaporization enthalpy of [EMIm][NTf₂] for each of the three full temperature cycles and their mean value. The error is determined from the standard deviation of the data in Fig. 9. The experimental $\Delta_1^g H_m^0(T)$ -values referred to the mean temperature of vaporization $T_{\text{avg}} = 365.5$ K were adjusted to the reference temperature 298 K using the heat capacity difference $\Delta_1^g C_{p,m}^0 = -56$ J K⁻¹ mol⁻¹.³⁰

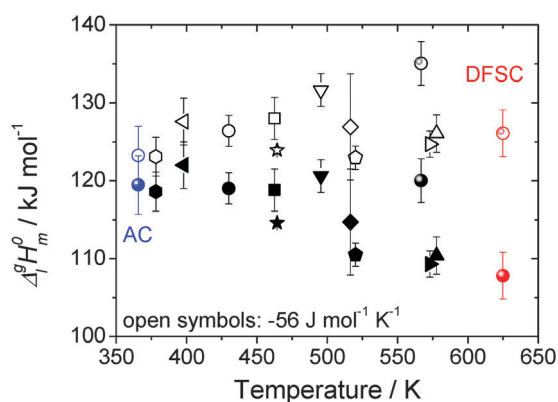


Fig. 11 Collection of vaporization enthalpies for [EMIm][NTf₂] derived from various methods at different average temperatures (bulk symbols).^{1,3,9–12,16,31–35} The open symbols represent the data adjusted to the reference temperature of 298 K using $\Delta_1^g C_{p,m}^0 = -56$ J K⁻¹ mol⁻¹ as suggested by Verevkin *et al.*³⁰ The data determined by the AC calorimetry and the DFSC are emphasized in color.

temperature $T = 298$ K. The mean value yields $\Delta_1^g H_m^0(298 \text{ K}) = (123 \pm 4)$ kJ mol⁻¹ for the vaporization enthalpy of [EMIm][NTf₂]. Fig. 11 comprises all $\Delta_1^g H_m^0(T)$ -values available in the literature and determined with different techniques in different temperature ranges. Filled symbols represent the vaporization enthalpies at the average temperatures of the corresponding measurement. Open symbols represent the vaporization enthalpy values re-calculated from the original values at T_{avg} to the reference temperature of 298 K using the heat capacity difference $\Delta_1^g C_{p,m}^0 = -56$ J K⁻¹ mol⁻¹.³⁰ The apparent trend of the available data of $\Delta_1^g H_m^0$ (referred to the T_{avg}) along the temperature axis is evidence of the natural temperature dependence of the vaporization enthalpies decreasing with temperature. In contrast, the values of $\Delta_1^g H_m^0(298 \text{ K})$ scatter around a constant value, providing confidence in the procedure of adjustment of the $\Delta_1^g H_m^0(T)$ -values to the reference temperature. Among numerous data sets on [EMIm][NTf₂] available from the literature, it is reasonable to pay more attention to the data determined using a differential fast scanning calorimeter (DFSC, red data in Fig. 11) in our lab

just recently.¹² It has to be pointed out that although the AC chip-calorimetry and the DFSC are two completely independent techniques, they provide very close values of vaporization enthalpy at the reference temperature: $(\Delta_1^g H_m^0(298 \text{ K}))_{\text{AC}} = (123 \pm 4)$ kJ mol⁻¹ and $(\Delta_1^g H_m^0(298 \text{ K}))_{\text{DFSC}} = (126 \pm 2)$ kJ mol⁻¹ if they are adjusted to 298 K with the same value $\Delta_1^g C_{p,m}^0 = -56$ J mol⁻¹ K⁻¹ as we recommended earlier.³⁰

As it has been discussed earlier,³⁰ the level of the heat capacity difference $\Delta_1^g C_{p,m}^0$ required for the temperature adjustments of vaporization enthalpies is a subject of controversy. However, within the current work we have the unique possibility to derive the $\Delta_1^g C_{p,m}^0$ -value directly from the experimental data measured in a broad temperature range. Indeed, the combination of the earlier published DFSC data (measured in the range 400 to 780 K),³⁶ with the current results from the AC chip-calorimeter measured between 358 K and 373 K), provides vapor pressures in the extremely broad temperature range 358–780 K. Admittedly, from such a data set the $\Delta_1^g C_{p,m}^0$ -value for [EMIm][NTf₂] can be derived by fitting experimental vapor pressures to the Clarke–Glew-equation:³⁷

$$R \ln \frac{p_{\text{vap}}}{p_0} = -\frac{\Delta_1^g G_m^0(\theta)}{\theta} + \Delta_1^g H_m^0(\theta) \left(\frac{1}{\theta} - \frac{1}{T} \right) + \Delta_1^g C_{p,m}^0(\theta) \left(\frac{\theta}{T} - 1 + \ln \frac{T}{\theta} \right) + \dots \quad (11)$$

The advantage of this equation is that it yields the values for $\Delta_1^g H_m^0(\theta)$, $\Delta_1^g C_{p,m}^0(\theta)$, as well as additionally the molar Gibbs free energy of vaporization, $\Delta_1^g G_m^0(\theta)$. The θ is the arbitrary reference temperature (in this work taken as 298 K). $p_0 = 101\,300$ Pa is the standard pressure. In contrast to the commonly used Clausius–Clapeyron-equation (restricted to the short temperature range), the Clarke–Glew equation is able to take into account the curvature of the vapor–pressure temperature dependence properly due to fitting to the three adjustable parameters $\Delta_1^g H_m^0(\theta)$, $\Delta_1^g C_{p,m}^0(\theta)$, and $\Delta_1^g G_m^0(\theta)$. Fig. 12 shows the vapor pressure data and the corresponding Clarke–Glew-fit that yields the values $\Delta_1^g H_m^0(298 \text{ K}) = (124 \pm 2)$ kJ mol⁻¹, $\Delta_1^g C_{p,m}^0(298 \text{ K}) = -(53 \pm 10)$ J mol⁻¹ K⁻¹ and $\Delta_1^g G_m^0(298 \text{ K}) = (81 \pm 1)$ kJ mol⁻¹. The value of the $\Delta_1^g C_{p,m}^0(298 \text{ K}) = -(53 \pm 10)$ J mol⁻¹ K⁻¹ derived from the Clarke–Glew-fit is slightly smaller than those recommended in our work $\Delta_1^g C_{p,m}^0(298 \text{ K}) = -(56 \pm 10)$ J mol⁻¹ K⁻¹,³⁰ but the agreement is very good within the experimental uncertainties. Also vaporization enthalpy $\Delta_1^g H_m^0(298 \text{ K}) = (124 \pm 2)$ kJ mol⁻¹, determined from the Clarke–Glew equation is similar to those reported from the earlier fitting to the DFSC-data and other literature data.³⁸ Taking into account the strong interaction energy between the cation and the anion, *i.e.* about 300 kJ mol⁻¹ in common IL, this value supports the view that thermally stable aprotic ILs exist exclusively as ion pairs in the gaseous phase within a broad range of temperatures.³⁵ However, the new vaporization enthalpy $\Delta_1^g H_m^0(298 \text{ K}) = (124 \pm 2)$ kJ mol⁻¹ and the heat capacity difference $\Delta_1^g C_{p,m}^0(298 \text{ K}) = -(53 \pm 10)$ J mol⁻¹ K⁻¹ derived in this work can be now considered as the benchmark values for [EMIm][NTf₂], useful for testing other experimental methods.



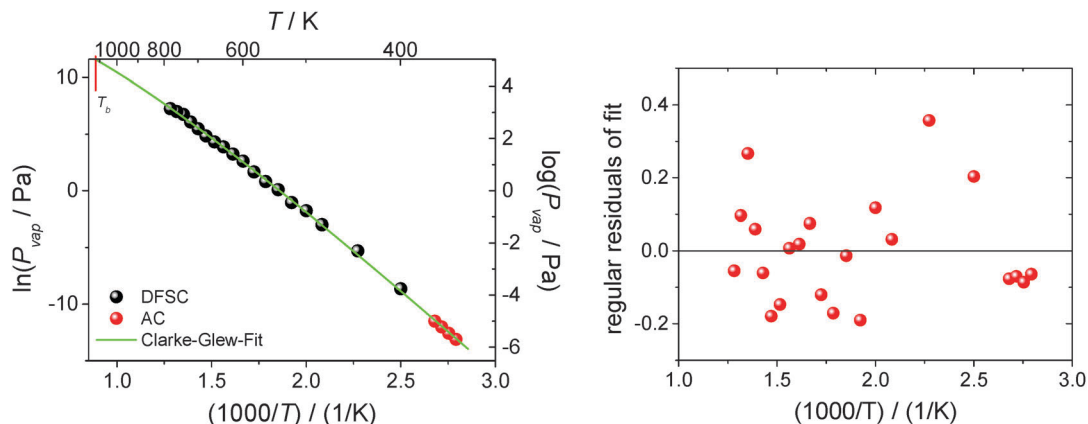


Fig. 12 Comparison of the vapor pressure data for [EMIm][NTf₂] determined by AC calorimetry (red points) and DFSC (black points). The green solid line represents the Clarke–Glew-fit corresponding to the measured vapor pressures.

Taking into account the extremely large temperature range of experiments performed with the DFSC and AC methods as well as that the Clarke–Glew-equation accounts for the curvature of the $\ln(P_{\text{vap}}) - 1/T$ dependence, it becomes possible to estimate the normal boiling point of [EMIm][NTf₂] in a more reliable way in comparison to other techniques. As can be seen from Fig. 12 the vapor pressure determined by AC calorimetry and DFSC cover a range spanning nine orders of magnitude in pressure and a temperature range of more than 400 K. Since the highest vapor pressure measured by DFSC is about 1000 Pa the extrapolation towards the boiling point is comparably small (two orders of magnitude). Such extrapolation provides the boiling temperature of [EMIm][NTf₂] as $T_b = (1120 \pm 50)$ K. To our surprise, this value is twice higher than those previously assessed in the literature from surface tension measurements by Rebelo *et al.*⁴ However, more surprisingly is that the T_b of [EMIm][NTf₂] derived in this work is virtually identical to the critical temperature $T_c = (1155 \pm 55)$ K of this IL calculated as the average from empirical Eötvös and Guggenheim equations applied by Rebelo *et al.*⁴ Discussion of the reason for this discrepancy is outside the scope of this study. Nevertheless, our new estimate for the normal boiling point is more close to $T_b = 977$ K calculated by Monte Carlo simulations³⁹ but $T_c = 1236$ K calculated for [EMIm][NTf₂] reported in the same work seems to be too low. Indeed, the vaporization enthalpy of [EMIm][NTf₂] measured with DFSC $\Delta_1^{\text{g}}H_m^0(780 \text{ K}) = 100 \text{ kJ mol}^{-1}$ is apparently different from vaporization enthalpy at T_c which has to be zero. Thus, our new estimate for the normal boiling point of [EMIm][NTf₂] could be used for parametrization and testing of the force-fields used in molecular-dynamic simulation.

Our new value for T_b of the archetypical IL has also crucial practical aspects. In recent works, Beck *et al.*⁴⁰ and Neise *et al.*⁴¹ studied some ILs as quenching media in heat-treatment processes of metals. The boiling point of the quenching medium must be avoided because of the unfavorable Leidenfrost phenomenon.^{40–43} Because of our reliable estimation of the boiling point for [EMIm][NTf₂], which exceeds twice the commonly acknowledged range of T_b for typical ILs, the search for high temperature applications for common ILs can be extended significantly.

Conclusion

AC chip-calorimetry provides a new and very sensitive method for the mass loss rate measurements of extremely low-volatile compounds at low temperatures under UHV-conditions. Reliable vapor pressures of 10^{-6} Pa and lower can be determined by using sub-microgram samples within relatively short experimental timescales. This is possible due to the small sample size. The ratio of the liquid–vacuum interfacial area to the volume of the sample is increased compared to conventional techniques, *e.g.* TGA, by a factor of 10^3 , yielding large relative mass changes in short time. Compared to other highly sensitive techniques, like QCM, the AC calorimeter is less sensitive to perturbations and drifts. This is due to the employed lock-in technique which senses the signal only at the second harmonic of the predefined and very stable oscillator frequency. Thus, this technique is predestined for vapor pressure measurements of ILs at relatively low temperatures. Using AC calorimetry we succeeded in measuring the vapor pressure of [EMIm][NTf₂] at temperatures starting from 358 K. Potentially, this technique can be applied to measure the vapor pressure of thermally very unstable ILs, which tend to decompose at comparably low temperatures and thus are not suitable for vapor pressure determination by conventional techniques. This work is now in progress. For thermally stable ILs, the combination of AC chip-calorimetry with the DFSC method allows us to extend the experimental temperature range as far as it was not possible before by conventional methods. This combination of the methods opens up a new way for deriving the thermodynamic parameters of vaporization $\Delta_1^{\text{g}}H_m^0$, $\Delta_1^{\text{g}}C_{p,m}^0$ and $\Delta_1^{\text{g}}G_m^0$ required for practical application of ILs as thermofluids and reaction media.

Acknowledgements

This work is supported by the DFG project: “Ionic Liquids as quenching media for the heat treatment of metallic materials” SCH 331/24-2.



Notes and references

- 1 D. H. Zaitsau, G. J. Kabo, A. A. Strechan, Y. U. Paulechka, A. Tschersich, S. P. Verevkin and A. Heintz, *J. Phys. Chem. A*, 2006, **110**, 7303–7306.
- 2 Y. U. Paulechka, D. H. Zaitsau, G. J. Kabo and A. A. Strechan, *Thermochim. Acta*, 2005, **439**, 158–160.
- 3 J. P. Armstrong, C. Hurst, R. G. Jones, P. Licence, K. R. J. Lovelock, C. J. Satterley and I. J. Villar-Garcia, *Phys. Chem. Chem. Phys.*, 2007, **9**, 982–990.
- 4 L. P. N. Rebelo, J. N. C. Lopes, J. Esperanca and E. Filipe, *J. Phys. Chem. B*, 2005, **109**, 6040–6043.
- 5 M. J. Earle, J. Esperanca, M. A. Gilea, J. N. C. Lopes, L. P. N. Rebelo, J. W. Magee, K. R. Seddon and J. A. Widegren, *Nature*, 2006, **439**, 831–834.
- 6 J. A. Widegren, Y. M. Wang, W. A. Henderson and J. W. Magee, *J. Phys. Chem. B*, 2007, **111**, 8959–8964.
- 7 Y. Chen, Y. Y. Cao, Y. Shi, Z. M. Xue and T. C. Mu, *Ind. Eng. Chem. Res.*, 2012, **51**, 7418–7427.
- 8 F. Heym, B. J. M. Etzold, C. Kern and A. Jess, *Phys. Chem. Chem. Phys.*, 2010, **12**, 12089–12100.
- 9 S. P. Verevkin, R. V. Ralys, D. H. Zaitsau, V. N. Emel'yanenko and C. Schick, *Thermochim. Acta*, 2012, **538**, 55–62.
- 10 M. A. A. Rocha, C. Lima, L. R. Gomes, B. Schroder, J. A. P. Coutinho, I. M. Marrucho, J. Esperanca, L. P. N. Rebelo, K. Shimizu, J. N. C. Lopes and L. Santos, *J. Phys. Chem. B*, 2011, **115**, 10919–10926.
- 11 S. P. Verevkin, D. H. Zaitsau, V. N. Emel'yanenko and A. Heintz, *J. Phys. Chem. B*, 2011, **115**, 12889–12895.
- 12 M. Ahrenberg, M. Brinckmann, J. W. P. Schmelzer, M. Beck, C. Schmidt, O. Kessler, U. Kragl, S. P. Verevkin and C. Schick, *Phys. Chem. Chem. Phys.*, 2014, **16**, 2971–2980.
- 13 E. Zhuravlev and C. Schick, *Thermochim. Acta*, 2010, **505**, 1–13.
- 14 H. Huth, A. Minakov and C. Schick, *Netsu Sokutei*, 2005, **32**, 70–76.
- 15 F. Heym, B. J. M. Etzold, C. Kern and A. Jess, *Green Chem.*, 2011, **13**, 1453–1466.
- 16 K. R. J. Lovelock, A. Deyko, P. Licence and R. G. Jones, *Phys. Chem. Chem. Phys.*, 2010, **12**, 8893–8901.
- 17 M. Ahrenberg, E. Shoifet, K. R. Whitaker, H. Huth, M. D. Ediger and C. Schick, *Rev. Sci. Instrum.*, 2012, **83**, 033902.
- 18 H. Huth, A. A. Minakov and C. Schick, *J. Polym. Sci., Part B: Polym. Phys.*, 2006, **44**, 2996–3005.
- 19 H. Huth, A. A. Minakov, A. Serghei, F. Kremer and C. Schick, *Eur. Phys. J.: Spec. Top.*, 2007, **141**, 153–160.
- 20 S. Tagliati and A. Rydh, *Thermochim. Acta*, 2011, **522**, 66–71.
- 21 A. W. van Herwaarden, *Thermochim. Acta*, 2005, **432**, 192–201.
- 22 M. Ahrenberg, Y. Z. Chua, K. R. Whitaker, H. Huth, M. D. Ediger and C. Schick, *J. Chem. Phys.*, 2013, **138**, 024501.
- 23 M. Adam, C. Ganz, W. G. Xu, H. R. Sarajian, W. Gotz and T. Gerber, *Int. J. Nanomed.*, 2014, **9**, 975–984.
- 24 P. Sullivan and G. Seidel, *Ann. Acad. Sci. Fenn., Ser. A6*, 1966, **A**, 58–62.
- 25 R. L. Greene, C. N. King, R. B. Zubeck and J. J. Hauser, *Phys. Rev. B: Solid State*, 1972, **6**, 3297–3305.
- 26 O. Riou, J. F. Durastanti and Y. Sfaxi, *Superlattices Microstruct.*, 2004, **35**, 353–361.
- 27 I. V. Velichkov, *Cryogenics*, 1992, **32**, 285–290.
- 28 E. Zhuravlev and C. Schick, *Thermochim. Acta*, 2010, **505**, 14–21.
- 29 M. Ahrenberg, PhD thesis, Universität Rostock, 2013.
- 30 S. P. Verevkin, D. H. Zaitsau, V. N. Emel'yanenko, A. V. Yermalayeu, C. Schick, H. J. Liu, E. J. Maginn, S. Bulut, I. Krossing and R. Kalb, *J. Phys. Chem. B*, 2013, **117**, 6473–6486.
- 31 A. B. Tolstoguzov, *Mass Spectrom.*, 2007, **4**, 283–288.
- 32 L. Santos, J. N. C. Lopes, J. A. P. Coutinho, J. Esperanca, L. R. Gomes, I. M. Marrucho and L. P. N. Rebelo, *J. Am. Chem. Soc.*, 2007, **129**, 284–285.
- 33 H. M. Luo, G. A. Baker and S. Dai, *J. Phys. Chem. B*, 2008, **112**, 10077–10081.
- 34 C. M. Wang, H. M. Luo, H. R. Li and S. Dai, *Phys. Chem. Chem. Phys.*, 2010, **12**, 7246–7250.
- 35 V. N. Emel'yanenko, S. P. Verevkin and A. Heintz, *J. Am. Chem. Soc.*, 2007, **129**, 3930–3937.
- 36 M. Ahrenberg, M. Beck, C. Schmidt, O. Kessler, U. Kragl, S. Verevkin and C. Schick, in *Fast Scanning Calorimetry*, ed. C. Schick and V. Mathot, Springer, 2016, DOI: 10.1007/978-3-319-31329-0.
- 37 E. C. W. Clarke and D. N. Glew, *Trans. Faraday Soc.*, 1966, **62**, 539–547.
- 38 M. Ahrenberg, M. Brinckmann, J. W. P. Schmelzer, M. Beck, C. Schmidt, O. H. Kessler, U. Kragl, S. P. Verevkin and C. Schick, *Phys. Chem. Chem. Phys.*, 2014, **16**, 2971–2980.
- 39 N. Rai and E. J. Maginn, *Faraday Discuss.*, 2012, **154**, 53–69.
- 40 M. Beck, C. Schmidt, M. Ahrenberg, C. Schick, U. Kragl and O. Kessler, *HTM, J. Heat Treat. Mater.*, 2015, **70**, 73–80.
- 41 C. Neise, C. Rautenberg, U. Bentrup, M. Beck, M. Ahrenberg, C. Schick, O. Kessler and U. Kragl, *RSC Adv.*, 2016, **6**, 48462–48468.
- 42 C. Schmidt, M. Beck, M. Ahrenberg, C. Schick, O. Kessler and U. Kragl, *RSC Adv.*, 2014, **4**, 55077–55081.
- 43 M. Beck, C. Schmidt, M. Ahrenberg, C. Schick, U. Kragl and O. Kessler, *HTM, J. Heat Treat. Mater.*, 2013, **68**, 214–223.

