

Cite this: *Anal. Methods*, 2016, 8, 6932

A fluoride-selective electrode (Fse) for the quantification of fluoride in lithium-ion battery (Lib) electrolytes

A. Wilken,^a V. Kraft,^a S. Girod,^a M. Winter^{ab} and S. Nowak^{*a}

In this work, a fluoride-selective electrode (FSE) was applied with regard to the analysis of fluoride in lithium hexafluorophosphate-based lithium-ion battery (LIB) electrolytes. The influence of linear organic carbonate solvents dimethyl carbonate (DMC), ethyl methyl carbonate (EMC) and diethyl carbonate (DEC) which are used as co-solvents in battery electrolytes was investigated. The developed FSE method for the analysis of battery electrolytes was comprehensively validated in view of the (1) trueness and recovery rates (nominal vs. actual comparison; influence of different amounts of electrolytes on the performance of the electrode; recovery rates of defined differences in concentration), (2) precision (intra-day precision and inter-day precision), (3) selectivity (influence of the carbonate solvents on different fluoride concentrations; interferences) and (4) linearity and range. Statistical analysis was performed to evaluate the data and to characterize the reproducibility of the method. The determination of the commercially available LP30 (1 mol LiPF₆ and ethylene carbonate/dimethyl carbonate (EC : DMC, 50 : 50 wt%)) electrolyte stored over 47 days and at 80 °C, by the FSE technique was compared to the fluoride analysis by ion chromatography (IC). While interferences in the IC method resulted in false-high concentrations, the FSE operated free from interferences, selective and specific. The validation of the method was successfully carried out and enables new areas of application.

Received 12th August 2016
Accepted 15th August 2016

DOI: 10.1039/c6ay02264b

www.rsc.org/methods

1 Introduction

The fluoride-selective electrode (FSE) came up in the 1960s by Frant & Ross and was successfully applied for fluoride analysis in aqueous solutions.¹ The investigation of aging processes in lithium-ion batteries (LIB) is a key point for the further development of rechargeable batteries in the context of research on renewable energies. Therefore, investigations on the changes of the electrolyte composition contribute to the understanding of aging processes that still limit the battery cycling performance. Identification and quantification of compounds and their decomposition products formed in aging processes gain a precise understanding of the aging processes themselves and their influencing factors. Due to the cross-dependence of aging phenomena, they are very complicated to characterize.² Analysis of electrolytes as the connecting media to all cell compounds (cathode, anode, and separator) provides information about interactions between battery components. Electrolytes based on LiPF₆ dissolved in mixtures of organic carbonates such as ethylene carbonate–dimethyl carbonate (EC–DMC), ethylene

carbonate–ethyl methyl carbonate (EC–EMC) or ethylene carbonate–diethyl carbonate (EC–DEC) are used most frequently in LIBs.³ The degradation of LiPF₆ in organic electrolytes has been investigated intensively.^{4–6} Campion *et al.* (2004) proposed a mechanism for the autocatalytic decomposition of LiPF₆ in carbonates due to the presence of protic impurities such as traces of alcohol and water.⁷ In thermally aged electrolytes, the formation of HF was also observed.^{5,8} The reaction of PF₅ with alcohol and water, respectively, forms phosphoryl trifluoride (POF₃) and hydrofluoric acid (HF). HF for its part is a weak acid and may catalyze the decomposition reaction of LiPF₆ as a further protic compound. The formation of acidic compounds such as HF is known to have negative effects on the stability of the solid electrolyte interphase (SEI) on the anode.^{9,10} Moreover, Vetter *et al.* (2005) reported a disproportionation reaction of lithium manganese spinel used as the cathode material. HF dissolved Mn(III) from LiMn₂O₄ yielding λ-Mn₂O₄ (Mn IV), Mn²⁺ (Mn II) and LiF. Mn²⁺ leaves the spinel and gets dissolved in the electrolyte.⁴ Mn²⁺ may be re-precipitated on the cathode as for example, Mn_xO_y, MnF₂ or MnCO₃. Alternatively, Mn²⁺ might migrate to the negative electrode and will deposit there. However, while often damaging effects of HF in the context of the electrodes and electrolyte were reported, HF also stabilizes Al current collectors. HF was found to passivate Al used as the current collector due to the formation of chemically stable AlF₃ or AlO_xF_y on the surface.^{11,34} Overall, the

^aUniversity of Muenster, MEET Battery Research Center, Institute of Physical Chemistry, Corrensstraße 46, 48149 Muenster, Germany. E-mail: sascha.nowak@uni-muenster.de

^bHelmholtz Institute Münster, IEK-12 of Forschungszentrum Jülich, Corrensstrasse 46, Münster, Germany



presence of HF has turned out to be decisive for battery life and cyclization performance.

Until now, decomposition products of LiPF_6 -based organic electrolytes were investigated by means of IC as well as IC-electrospray ionization mass spectrometry (IC-ESI-MS),^{12–16} by electrospray ionization-high resolution mass spectrometry (ESI-HRMS),¹⁷ by liquid chromatography-tandem quadrupole mass spectrometry (LC/ESI-MS/MS)¹⁸ and by gas chromatography-mass spectrometry (GC-MS).^{15,19–22} Terborg *et al.* achieved a baseline separation of the dissociation products by IC of dissolved LiPF_6 in water as well as of the components and dissociation products of a commercially available battery electrolyte (1 M LiPF_6 in EC : DEC (3 : 7 w/w)).¹² Kraft *et al.* (2015) monitored the fluoride formation during aging using the IC technique.¹⁵ Co-elution of the fluoride peak with the arising ionic organophosphates was observed caused by the low retention of these compounds on a column with a hydrophilic character. Organophosphates are formed unavoidably from the organic carbonates during cyclization of LIBs and indicate aging processes. With increasing cyclization, amounts of organophosphates increase, too. Thus, besides the interesting fluoride concentrations, further aging products arise during ongoing charge and discharge processes impeding the detection of the fluoride. It was noted that fluoride contents of samples with a higher degree of degradation might have given false-high values due to co-elution. A high selectivity in regard to fluoride and organophosphates was achieved on a column with hydrophobic character. However, the analysis time was extremely high caused by a strong interaction of hexafluorophosphate with the stationary phase.¹⁴ Furthermore, the two-dimensional IC yielded a successful separation of organophosphates but could not separate fluoride.¹⁶ Especially in the case of samples of a higher degree of degradation, the IC analysis capability in terms of fluoride is limited. So far, there is no method reported which can access the fluoride quantification in aged LIB electrolytes. Furthermore, to the best of our knowledge, FSE has not been reported for fluoride quantification in LiPF_6 -based LIB electrolytes until now. In addition, an analytical validation for the determination of fluoride in this matrix assessing the suitability of the method in this context was not reported in the literature.

Using spectroscopic and chromatographic methods for the quantification of fluoride is challenging due to fluoride's heavy excitation because of its high electronegativity and its low retention on ion-exchange columns resulting in co-elution with other compounds having the same chromatographic behavior. A highly element-selective and specific analysis tool was developed by Frant & Ross in 1966.¹ A single-crystal of a rare earth fluoride, such as LaF_3 , NdF_3 or PrF_3 , was used as the electrode-type sensor giving a Nernstian response over several decades of fluoride ion activity. The response of the LaF_3 electrode to the concentration of fluoride ions was reported several times to start at 10^{-6} mol L^{-1} upwards.^{1,33} The ISE was applied in the past for fluoride determinations in water, wastewater, pure salts after pre-concentration, electroplating baths, milk, minerals and rocks, plants, phosphoric acid topaz, bones, urine, aliphatic amine solutions, dental tissues, samples containing boron, organic compounds, tea, biological

materials, hair and D_2O .²³ In the present work, the FSE was investigated for its applicability of fluoride analysis in organic electrolytes. Due to the complexity of battery electrolytes, particular attention was paid to the possible adverse reactions of matrix compounds with an FSE. The method was successfully validated considering the following points: (1) trueness (deviation of the measured value due to systematic errors) and recovery rates investigating (a) a nominal actual comparison, (b) the influence of the organic carbonates in various compositions and volumes on fluoride detection and (c) the recovery of defined differences in fluoride concentrations in solutions spiked with different concentrations of a fluoride standard; (2) precision (deviation of analysis values due to random errors) investigated (a) as inter-day precision and intra-day precision; (3) selectivity as (a) a comparison of the analyte in standard solutions with the analyte in the matrix of real samples and (b) the application of TISAB solution for prevention of interferences and achievement of pH stability; (4) linearity and range as a comparison of the linear calibration function with the function of the 2nd degree as well as consideration of the Nernst slope; (5) limits of detection and quantification. After validation, the FSE method was applied to the characterization of thermally aged LiPF_6 -based LIB electrolytes. The results were compared to the results obtained by analysis using IC.

2 Experimental section

2.1 Chemicals

Sodium carbonate (CertiPUR) and sodium hydrogen carbonate (for analysis) were bought from Merck KGaA (Darmstadt, Germany). Glacial acetic acid (100%, 17.65 mol L^{-1}), sodium chloride and acetonitrile (AcN, for HPLC in gradient grade quality) were purchased from VWR (Darmstadt, Germany). *trans*-1,2-Diaminocyclohexane-*N,N,N',N'*-tetraacetic acid monohydrate (Komplexon IV, $\geq 99\%$) and sulphuric acid were obtained from Sigma-Aldrich Chemie GmbH (Steinheim, Germany). Fluoride standard IC (1000 mg $\text{L}^{-1} \pm 4$ mg L^{-1}) was purchased from Fluka Chemie GmbH (Buchs, Switzerland). Dimethyl carbonate (DMC) SelectiLyte™, ethyl methyl carbonate (EMC) SelectiLyte™, diethyl carbonate (DEC) SelectiLyte™ and LP30 SelectiLyte™ (1 M LiPF_6 in EC : DMC (50 : 50, wt%)) were acquired from BASF SE (Ludwigshafen, Germany). All chemicals were of the highest available quality.

Water was purified using a Milli-Q water Advantage A10 system (18.2 M Ω cm, TOC < 3 ppb, Millipore GmbH, Schwalbach, Germany).

2.2 Calibration solutions for method validation

For external calibration, 17 standard solutions of the following fluoride concentrations were diluted in de-ionized water from the fluoride stock solution (1 g L^{-1}): blank, 0.5 ppm, 1 ppm, 2 ppm, 3 ppm, 4 ppm, 5 ppm, 10 ppm, 20 ppm, 30 ppm, 40 ppm, 50 ppm, 60 ppm, 70 ppm, 80 ppm, 90 ppm and 100 ppm.

2.3 FSE instrumentation

The FSE system consisted of an Metrohm 858 Professional Sample Processor, a 905 Titrand connected to an 801 Stirrer,



two 800 Dosinos (20 mL for dispensing the sample into the PTFE test vessel and 50 mL for flushing of the PTFE test vessel after the measurement), the FSE type no. 6.0502.15 and the Ag Ag/Cl reference electrode type no. 6.0750.100. The instrument was controlled by Methrom tiamo™ 2.4 and Metrohm MagIC Net™ 3.1. All devices and the software were acquired from Metrohm AG (Herisau, Switzerland). For analysis, 10 mL of TISAB IV solution were filled in the PTFE test vessel and 2 mL of the sample were added.

2.4 IC instrumentation

The IC system consisted of a Metrohm 889 IC Sample Center for sample introduction and an 850 Professional IC equipped with a chemical suppression module and a conductivity detector. For the anion separation, the column Metrosep A Supp 4 with the dimensions 250 mm length \times 4.0 mm interior diameter and 9 μ m particle size was used combined with the matching guard column Metrosep A4/5 guard, 4.0 mm interior diameter. The suppressor applied a 100 mmol L⁻¹ H₂SO₄ solution for regeneration of the stationary phase of the suppressor. The system was controlled by MagIC Net™ 3.1. All devices and the software were acquired from Metrohm AG (Herisau, Switzerland). The column oven was operated at 40 °C and the flow rate was set to 1 mL min⁻¹. Anions were separated isocratically over 18 min using an aqueous solution of acetonitrile (24 vol%), sodium carbonate (2.52 mmol L⁻¹) and sodium hydrogen carbonate (2.38 mmol L⁻¹) as the eluent.

2.5 Statistical analysis

For statistical analysis the open source software R Studio from R Core Team (2015) was used. R: A language and environment for statistical computing. R Foundation for Statistical Computing, Vienna, Austria. URL <https://www.R-project.org/>.

2.6 Trueness and recovery rates

2.6.1 Nominal–actual comparison with a subsequent *t*-test.

A calibration curve consisting of the following concentrations was used for the external calibration: blank, 0.5 ppm, 1 ppm, 2 ppm, 3 ppm, 4 ppm, 5 ppm, 20 ppm, 30 ppm, 40 ppm, 50 ppm, 60 ppm, 80 ppm, 90 ppm and 100 ppm. Solutions of 10 ppm and 70 ppm were applied as unknown samples. Their concentrations were calculated based on the external calibration. The solutions were analyzed six times each and data values were compared with the expected concentrations using a one sample *t*-test.

2.6.2 Influence of electrolytes. The influence of EC : DMC (50 : 50, wt%), EC : DEC (50 : 50, wt%) and EC : EMC (50 : 50, wt%) was investigated in an aqueous solution containing 10 ppm fluoride. 100 μ L of the fluoride stock solution (1 mg L⁻¹) was mixed with 0 μ L, 10 μ L, 50 μ L, 100 μ L, 500 μ L and 1000 μ L of the electrolytes, respectively, and filled up with de-ionized water in a 10 mL vial. The samples were analyzed three times and the average of the detected voltages was used for calculations.

2.6.3 Recovery of defined differences in fluoride concentrations. For the addition procedure, 100 μ L of LP30 (1 M LiPF₆ in EC : DMC (50 : 50, wt%)) from a freshly opened bottle was

spiked with 0 μ L, 20 μ L, 50 μ L, 70 μ L and 90 μ L of the fluoride stock solution (1 mg L⁻¹), respectively, and filled up to 10 mL with de-ionized water resulting in nominal fluoride concentrations of 0 ppm, 20 ppm, 50 ppm, 70 ppm and 90 ppm.

2.7 Precision

For intra-day and inter-day precision, 16 standard solutions of the following fluoride concentrations were diluted in de-ionized water from the fluoride stock solution (1 g L⁻¹): blank, 1 ppm, 2 ppm, 3 ppm, 4 ppm, 5 ppm, 10 ppm, 20 ppm, 30 ppm, 40 ppm, 50 ppm, 60 ppm, 70 ppm, 80 ppm, 90 ppm and 100 ppm. Larger amounts of all concentrations were prepared to use the same stock solutions for all recurring analysis. For intra-day precision, the solutions were analyzed six times successively on the same day. For inter-day analysis precision, the solutions were analyzed for a period of six days consecutively.

2.8 Selectivity

2.8.1 Influence of the carbonates. Two sample batches differing in terms of the presence or absence of EC : DEC (50 : 50, wt%) containing the following fluoride concentrations were prepared: 0.5 ppm, 1 ppm, 2 ppm, 5 ppm, 10 ppm, 15 ppm, 25 ppm, 50 ppm, and 100 ppm. In the first batch, the samples are just filled up with de-ionized water. In the second batch, 100 μ L of EC : DEC (50 : 50, wt%) were added to each solution and prior to filling up with deionized water. Each batch was analyzed three times. The average of the detected voltages for each concentration step was used for calculations.

2.8.2 Interferences: preparation of total ion strength adjustment buffer (TISAB) IV. For the preparation of TISAB IV solution, 58 g of sodium chloride (0.99 mol) was dissolved in 500 mL of de-ionized water. Afterwards 5 g (13.7 mmol) of *trans*-1,2-diamino-cyclohexane-*N,N,N',N'*-tetraacetic acid monohydrate (TISAB IV, Complexon IV) were added and dissolved by adding sodium hydroxide solution (8 mol L⁻¹) drop by drop. Glacial acetic acid (57 mL, 17.5 mol L⁻¹) was added and with sodium hydroxide solution (8 mol L⁻¹) adjusted to pH 5.5. Finally, the solution was filled up to 1 L with de-ionized water.

2.9 Linearity and range

For investigation of the linearity, data of the calibration curve were used. Linearity was determined by comparing the linear calibration function to a function of the 2nd degree. The adjustment of the two functions was compared by an *F*-test.

2.10 Sample preparation and hydrolysis stability

Since traces of water or moisture lead to the rapid decomposition of the conducting salt, the electrolytes were handled in a dry room or glovebox to prevent contamination. However, water can be used as a solvent during sample preparation. Terborg *et al.* showed that lithium hexafluorophosphate is stable in aqueous solution for several days.¹² The same was reported by Metrohm who investigated the stability of PF₆ in water as well as the stability of PF₆ in electrolytes when diluted with water.³⁵ Regarding the hydrolysis of the organophosphates,



Kraft *et al.* demonstrated that these compounds are stable against water and therefore water is an appropriate solvent during sample preparation.¹⁶

2.11 Sample preparation for aging experiments of a battery electrolyte at 80 °C

For the investigation of the formation of fluoride in the electrolytes, 2 mL of commercially available LP30 was filled in aluminum vials closed with a screw cap. In total 40 sample containers were stored at 80 °C for 47 days. The samples were analyzed on days 1, 3, 5, 9, 14, 16, 20, 28, 35 and 47. At each time, four sample vials were analyzed and each sample was analyzed threefold by IC combined with a conductivity detector as well as with a FSE. Before analysis by means of FSE, all samples were diluted 1 : 100 with de-ionized water. For analysis *via* IC, all samples were diluted further 1 : 1 with de-ionized water. The average of each time was used for calculations.

2.12 Sample preparation for aging experiments of a battery electrolyte at several temperatures

For the investigation of fluoride formation depending on the temperature, 2 mL of commercially available LP30 was filled in aluminum vials closed with a screw cap. Groups of four samples were stored at -16 °C, 6 °C, 20 °C, 40 °C, 60 °C and 80 °C, respectively, for the duration of 47 days. For analysis by means of FSE, all samples with the exception of the samples stored at -16 °C, 6 °C and 20 °C were diluted 1 : 100 with de-ionized water. The samples stored at -16 °C, 6 °C and 20 °C were diluted 1 : 10 and analyzed in this dilution by FSE as well as by IC due to the expected very low fluoride concentrations. For analysis *via* IC, all remaining samples were subsequently diluted 1 : 1 with de-ionized water. All samples were analyzed threefold by IC as well as by FSE. The average of each temperature was used for calculations.

2.13 External calibration for analysis by means of IC and FSE

For external calibration, ten standard solutions of the following fluoride concentrations were diluted in de-ionized water from the fluoride stock solution (1 g L⁻¹): blank, 0.5 ppm, 1 ppm, 2 ppm, 5 ppm, 10 ppm, 15 ppm, 25 ppm, 50 ppm and 100 ppm. The external calibration was performed daily before sample analyses by FSE and IC.

3 Results & discussion

3.1 Trueness and recovery rates

3.1.1 Nominal–actual comparison with a subsequent *t*-test.

The examination of the accuracy as recommended by Kromidas *et al.* (2011) provides the nominal–actual comparison with a subsequent *t*-test.²⁴ Two samples with a nominal concentration of 10 ppm and 70 ppm fluoride were analyzed six times and their concentrations calculated by external calibration. For the 10 ppm standard solution a mean of 9.9 ppm (SD = 0.24 and the recovery rate: 97–103%) and for the 70 ppm standard solution a mean of 70.4 ppm (SD = 1.26 and the recovery rate: 98–103%) were determined. The Shapiro–Wilk normality test was applied

to determine whether or not the data values followed the normal distribution and confirmed in this case a normal distribution of the data values with a critical value of $\alpha = 0.05$ at 10 ppm ($W_{\alpha=0.05} < W = 0.796$ and $p = 0.054$) and at 70 ppm ($W = 0.927$ and $p = 0.559$). No significant difference was found between the nominal and the actual concentrations applying a one sample *t*-test for 10 ppm, $t(5) = -1.367$ and $p = 0.23$, and for 70 ppm, $t(5) = 0.850$ and $p = 0.434$, respectively. The *t*-test verified that the nominal values do not differ from the experimental concentrations within a 95% confidence level. The deviations for ion selective analysis techniques are usually given by 2–5%.²⁵ The data for precision obtained here for the fluoride selective electrode are in good accordance to the data from the literature.

3.1.2 Influence of the electrolyte. For investigation of the influence of the battery electrolyte composition on the ion-selective electrode surface, organic carbonates used as solvent components in electrolytes of batteries were added to an aqueous fluoride solution of constant fluoride concentration. Between 10 μ L (0.1%) and 1000 μ L (10%) of EC : DMC, EC : DEC and EC : EMC, each in a ratio of (50 : 50, wt%), were spiked to an aqueous solution containing 10 ppm fluoride. All samples were examined by a three-fold determination procedure. For external calibration, electrolyte-free calibration solutions were applied to make the influence of the electrolytes apparent. An electrolyte-free solution (0; 0%) containing 10 ppm fluoride was analyzed as reference. The recovery rates of fluoride observed for different contents of carbonates are between 95% and 109% as summarized in Table 1.

A slightly positive trend becomes visible: with the increasing amount of the electrolyte, increasing recovery rates resulted. However, up to the 500 μ L (5%) amount of the electrolyte the recovery rates (95–106%) are in good accordance to recovery rates determined by repeated injections of fluoride standard solution containing no electrolyte (10 ppm: 97–103% and 70 ppm: 98–103%; Chapter 3.1.1). Therefore, samples containing 10–500 μ L (0.1–5%) of the electrolyte, which corresponds to the volume of the electrolyte that is typically recovered from cycled cells, can be analyzed by means of the fluoride selective electrode method without any compensation of matrix effects.

3.1.3 Recovery of defined differences in fluoride concentrations. Wherever possible the trueness of an analytical

Table 1 Recovery rate of fluoride after adding varying amounts of organic carbonates EC : DMC (50 : 50, wt%), EC : DEC (50 : 50, wt%) and EC : EMC (50 : 50, wt%)

Added carbonate [μ L, %]	Recovery rate of 10 ppm fluoride [%]		
	EC : DMC	EC : DEC	EC : EMC
0; 0%	101	96	96
10; 0.1%	101	95	100
50; 0.5%	101	95	100
100; 1%	102	96	101
500; 5%	106	98	103
1000; 10%	109	102	108



method should be estimated by including suitable certified reference materials (CRMs). If these are not available, as is the case here, spiking of samples containing adjusted amounts of the matrix with standard solution is recommended.²⁶ For investigation of systematic errors, an LP30 electrolyte taken from a freshly opened bottle was spiked with fluoride. In a first step, the fluoride concentration of the freshly opened bottle was determined. Furthermore, the electrolyte was spiked with 20 ppm, 50 ppm, 70 ppm and 90 ppm fluoride, respectively. Table 2 shows (a) the expected concentrations, (b) the determined concentrations, (c) the expected differences to the previous concentration and (d) the determined differences to the previous concentration.

The fluoride concentration in a freshly opened bottle of LP30 has already been determined to be 2.1 ppm. The initial amount was determined in all samples beyond the spiked amount and led to increased fluoride concentrations. The calculated theoretical concentrations were recovered plus about 2 ppm. For example, after spiking 20 ppm fluoride, a total content of 21.8 ppm was determined. Differences in fluoride concentrations between the samples of about 20 ppm and 30 ppm, caused by spiked fluoride concentrations were observed as expected. Differences between samples could be recovered accurately throughout the concentration range.

3.2 Precision

The precision, *i.e.*, the accuracy of the measurement, specifies scattering of analysis values due to random errors. The scattering of analysis values can be expressed as the variation coefficient of repeated analysis. Variation in the analysis value due to the analysis instrument itself is referred to as 'repeatability of the instrument'. It was specified by a sixfold analysis of the same fluoride containing standard solutions. Here, the calibration curve consisting of ten concentration points between 1 ppm and 100 ppm was used to observe variations over the whole calibration range.

3.2.1 Intra-day precision (within batches). The sixfold analysis of the standard solutions analyzed successively on the same day yielded variation coefficients between 0.2 and 2.5%. Comparison of variances using Levene's test proved the variance homogeneity of analysis values at each concentration step (*e.g.* 1 ppm, 2 ppm, ..., 100 ppm). Variances of analysis values at

each concentration step are equal, $F(14, 75) = 0.7064, p > 0.05$, the assumption of homoscedasticity is attained and criteria for a linear regression are fulfilled.

3.2.2 Inter-day precision (between batches). The sixfold analysis of the standard solutions analyzed for a period of six days consecutively led to variation coefficients between 0.5 and 3.8%. Levene's test proved homogeneity of variances, $F(14, 75) = 0.391, p > 0.05$. Variances of analysis values are equal. Scattering of analysis values are due to random errors and do not show systematic effects.

The intra-day and inter-day precision, moreover, proved process stability, repeatability and comparability of analysis pointing to a high robustness of the method.

3.3 Selectivity

3.3.1 Influence of the carbonates on varying fluoride concentrations. The analysis of standard solutions often differs from the analysis of real samples containing matrix compounds and interfering substances. Matrix compounds such as the organic carbonates in battery electrolytes may influence the detection of fluoride using the fluoride-selective electrode. While the influence of the carbonates on the recovery rate of fluoride has been shown above, here the influence of the carbonates on the calibration curve shall be evaluated. By adding 100 μL of the electrolyte under the condition "with matrix", the typically recovered volumes of electrolytes from cycled cells are covered. If the carbonates influence the calibration curve, the calibration solutions would have to be adjusted to the matrix of the real samples. The carbonates contained in the battery electrolyte would have to be added to each standard solution for calibration. A comparison of the method "no matrix" with the method "with matrix" is indicated. Several methods are discussed to evaluate the agreement between the two methods.²⁷ As suggested by Bland & Altman for the investigation of the agreement the differences between the two methods were plotted.^{28–30} The differences between the two experimentally determined voltages ($\Delta = \text{no matrix} - \text{with matrix}$) are plotted against the average of the determined voltages ($A_v = [\text{no matrix} + \text{with matrix}]/2$) in a Bland–Altman plot as shown for the EC : DEC mixture in Fig. 1.

The differences follow a normal distribution as confirmed by the Shapiro–Wilk test, $W_{\alpha=0.05} = 0.829 < W = 0.899$ and $p = 0.247$. The differences are distributed normally around the mean value. Thus, the mean value of the differences (-0.30 mV) gives the constant bias between the two methods "no matrix" and "with matrix". The measured voltage does slightly and constantly increase over the whole concentration range, if standard solutions contain matrix compounds.

Due to the normal distribution, 95% of differences lie between the mean difference \bar{d} and twice the standard deviation of the differences s . Here, differences are expected between $\bar{d} \pm 2s$ resulting in $[-1.54$ and $0.94]$. These values are referred to as "limits of agreement" and are estimates of values applying to the whole population. To estimate the precision of the limits of agreement, confidence intervals (CI) for both limits are calculated. The 95%-CI for the lower limit is $[-2.02$ and $-1.05]$ and

Table 2 Differences in fluoride concentrations recovered in LP30 from a freshly opened bottle spiked with various amounts of fluoride. The recovery of simulated differences in fluoride concentrations can be seen as an analogue to the analysis of unavailable certified reference materials (CRFs) and confirms the trueness of the method

Expected concentration [ppm]	Determined concentration [ppm]	Expected differences [ppm]	Determined differences [ppm]
0	2.1		
20	21.8	$20 - 0 = 20$	$21.8 - 2.1 = 19.7$
50	52.3	$50 - 20 = 30$	$52.3 - 21.8 = 30.5$
70	71.8	$70 - 50 = 20$	$71.8 - 52.3 = 19.5$
90	93.1	$90 - 70 = 20$	$93.1 - 71.8 = 21.3$



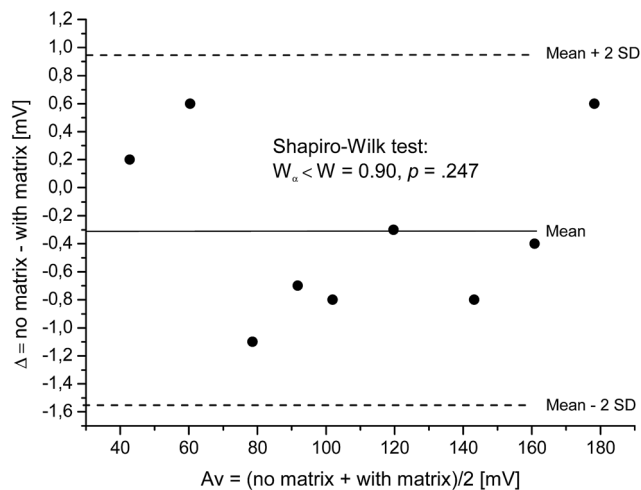


Fig. 1 Bland–Altman-plot. Difference vs. average of detected voltages for calibration curves representing “no matrix” and “with matrix”; with 95% limits of agreement (broken lines) and regression line ($y = -0.287$ to 1.191×10^{-4}) overlying with the mean (-0.30), both solid lines. The Shapiro–Wilk test confirms the normal distribution of data values.

for the upper limit [0.45 and 1.42]. Even though the number of samples was low and, thus, CI are wide, most data points are between the higher limit of the lower limit of agreement [-1.05] as well as the lower limit of the higher limit of agreement [0.45].

The constant bias of -0.30 mV corresponds to a deviation of 0.23% at 1 ppm and 1.79% at 100 ppm. These variations are smaller than the variation due to random errors (intra-day: 2.5%; inter-day: 3.8%) for precision variation and will not be considered any further. Corresponding analysis were performed with EC : DMC and EC : EMC resulting in comparable data.

3.3.2 Interferences. Several challenges in the past were already successfully mastered yielding this method, free of interferences: (1) the ion-selective electrode for fluoride analyses is known to show cross-sensitivity with hydroxide ions at $\text{pH} > 8$,^{1,31,32} and (2) some metal ions such as aluminum.³³ (3) The electrode responds to the activity of the fluoride ions and not simply to the concentration. The requested analytical information is, however, usually the concentration of the analytes and not its activity. Besides, the activity depends on the total ion concentration in the solution and, thus, differs from the concentration. Other ions in solution may influence the determined activity and therefore negatively influence the calculation of the concentrations. (4) The electrode responds selectively to fluoride and not to any fluoride containing compounds. At $\text{pH} < 5$ fluoride is protonated yielding HF and HF_2^- . However, these difficulties were eliminated by the introduction of a Total Ion Strength Adjustment Buffer (TISAB).³² The application of TISAB leads to a constant pH and ionic strength in analysis solution during measurement. In particular here, the application of TISAB IV (*trans*-1,2-diamino-cyclohexane-*N,N,N',N'*-tetraacetic acid monohydrate, CDTA, Komplexon IV) buffered the solution at pH 5.5 and so prevents protonation of fluoride and cross-sensitivity of the electrode against hydroxide ions. The fixed ionic strength allows drawing conclusions on analyte concentrations without further consideration of any

ionic activity. Moreover, TISAB IV reacts with metal ions, such as Al^{3+} and Fe^{3+} , which form complexes with fluoride. Due to the reaction of TISAB IV with the metal ions, fluoride bound in metal complexes is displaced and misquantification is avoided.^{31,32} Thus quantification of fluoride is also possible in rechargeable lithium batteries, if the anodic aluminum current collector becomes dissolved in the electrolyte as described by Krämer *et al.* (2013).³⁴ Selectivity and accuracy go hand in hand and confirm each other mutually, here. Selectivity is a precondition for accuracy and, thus, an accurate method is automatically selective.²⁴

3.4 Linearity and range

A look on the calibration curve providing the voltage in mV plotted against $\log(c)$ in $\log(\text{ppm})$ yielding a regression coefficient of $R = 0.999$ confirms that a linear relation between the electrode response and the fluoride concentration is given. However, the examination of linearity is performed for the sake of completeness. As data of the analysis of precision (Chapter 3.2) show homogeneous variances (homoscedasticity), the criteria for linear regression are fulfilled. The test of linearity is done by comparing the linear calibration function with the calibration function of the 2nd degree. The reduction of the residual variance resulting due to the regression model of higher order is checked for statistical significance by an *F*-test, $F(14, 13) = 20\,810$ and $p < 0.01$. As expected, data values fit perfectly to a linear model. The comparison of linear calibration functions with calibration functions of the 2nd degree has been proposed by Mandel in the 1930s and is known as Mandel's fitting test in the field of method validation in analytical chemistry.²⁴ The range for the determination of fluoride here is 0.5–100 ppm with a Nernst slope of -58.5 mV at 20 °C in ambient air.

3.5 Limits of detection and quantification

The response of the LaF_3 electrode to the concentration of fluoride ions was reported in the literature several times to start at 10^{-6} mol L^{-1} upwards.^{1,33} The working range here was starting at 2.6×10^{-2} mol $\text{L}^{-1} = 0.5$ ppm and, thus, the lowest concentration is clearly above the limits of detection and quantification and was not determined here.

3.6 Analysis of a battery electrolyte thermally aged at 80 °C

A central issue for the understanding of degradation processes in LIBs is the understanding and monitoring of fluoride formation from the conducting salt LiPF_6 . Fluoride formation is influenced by temperature and/or by the aging process.^{1,6,14}

After validation of the FSE method in the context of battery electrolytes, the newly evaluated FSE method is compared to conventional fluoride analysis by means of IC. The commercially available LP30 battery electrolyte was aged at 80 °C and analyzed at various times with a maximum of 47 days. After dilution the samples were analyzed by means of FSE and IC. The resulting fluoride contents are depicted in Fig. 2.

Data from FSE as well as IC analysis show increased fluoride concentrations with passing time from the first day to the 47th



day. In FSE analysis, fluoride concentrations increased from 224.6 ppm to 2413.1 ppm with standard deviations (SD) between 35.1 ppm and 295.0 ppm, which corresponds to SD = 3–19%. In IC analysis, fluoride concentrations increased from 238.0 ppm to 2639.2 ppm with approximately SD = 3–17%. The standard deviations varied between samples. For most samples, SDs are in a similar range except for the 9th, the 14th, 20th and 47th day exhibiting a higher SD. In total, SDs of both techniques overlap for the most days. Both techniques led to fluoride concentrations with real values in similar ranges.

Even when a similar trend in concentrations was observed, it is noteworthy that concentrations observed by FSE are always lower than the concentrations observed by IC analysis. Fig. 3 shows the ion chromatograms of LP30 analyzed after the first day in the oven at 80 °C and LP30 after the 28th day at 80 °C. While after the 1st day only one signal according to fluoride is visible, the chromatogram shows two signals after the 28th day. The second signal and the apparent peak shoulder of the fluoride peak can be assigned to organophosphates, a group of electrolyte degradation products that could not be baseline-separated using all conceivable possibilities. Co-eluting the organophosphate compounds does change the results towards “dust” findings which explains the higher “fluoride” concentrations found in IC analysis. False-high values increase with the number of days. The detected difference in concentration between the FSE and IC analysis $\Delta c(\text{F}^-)$ was 13.4 ppm for the first day with low degradation and is successively increased until the 47th day with high degradation, revealing a difference of 226.0 ppm. Fluoride analysis by IC does not only determine the analyte of interest and, thus, cannot be considered as a valid technique for this purpose.

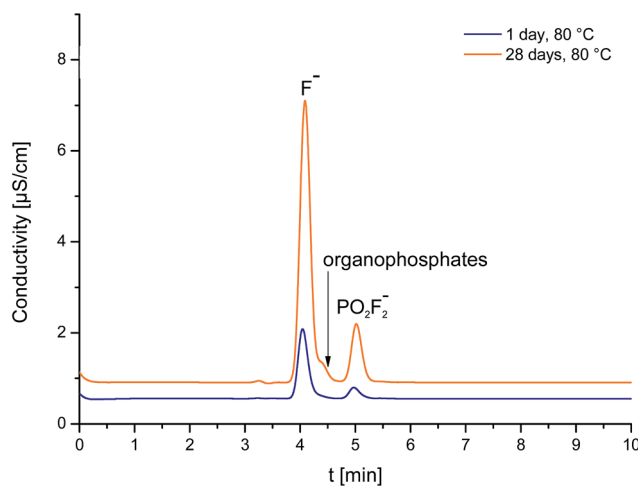


Fig. 3 Ion chromatogram of the aged LP30 electrolyte after one day (blue line) and after 28 days (orange line) at 80 °C. After 28 days of aging, organophosphates were formed and co-eluted with the fluoride peak resulting in an overestimation of fluoride contents.

The observed co-elution of fluoride and organophosphates is in good accordance with previous results reported from our working group.^{14,15} Kraft *et al.* (2015) identified organophosphates by means of IC-ESI-MS and discussed the influence of the co-eluting organophosphates.¹⁵ They assumed that the influence of the co-elution might be negligible if the content of ionic organophosphates is very low. For samples of high degradation degree, co-eluting compounds were expected to lead in false-high values.^{14,15} However, data shown here confirmed their assumptions: analysis of battery electrolytes by means of FSE prevents false-high concentrations especially in strongly aged samples.

The influence of water was proven to have no influence on the degradation of NaPF₆ and the formation of fluoride as shown elsewhere.¹² Compared to LiPF₆, the dissociation of NaPF₆ is advantageous due to entropic effects. Nevertheless, an aqueous solution (1% EC/DMC, v/v) of NaPF₆ containing 22.5 ppm Na/P and 22.5–135 ppm fluoride, respectively, were analyzed repetitively for four hours. About 20 minutes after NaPF₆ was dissolved, a fluoride concentration of 0.3 ppm was detected by means of FSE. After four hours, the fluoride concentration increased marginally to 0.7 ppm and, thus, the increase in fluoride concentration due to hydrolysis of NaPF₆ is negligible. The sample preparation in water was proven to have no influence on detected fluoride concentrations.

To investigate the influence of different temperatures, commercially available LP30 was stored at –16 °C, 6 °C, 20 °C, 40 °C, 60 °C and 80 °C for 47 days. The samples were analyzed again by means of the FSE and IC techniques. In Fig. 4 the fluoride contents are shown as a comparison of both methods. While detected fluoride concentrations were low when the sample was kept at low temperatures (–16 °C: 42.3 ppm/45.1 ppm (FSE/IC), 6 °C: 94.1 ppm/99.8 ppm; 20 °C: 115.3 ppm/114.9 ppm), fluoride concentrations increased when the sample was kept at higher temperatures (40 °C: 484.7 ppm/538.5 ppm

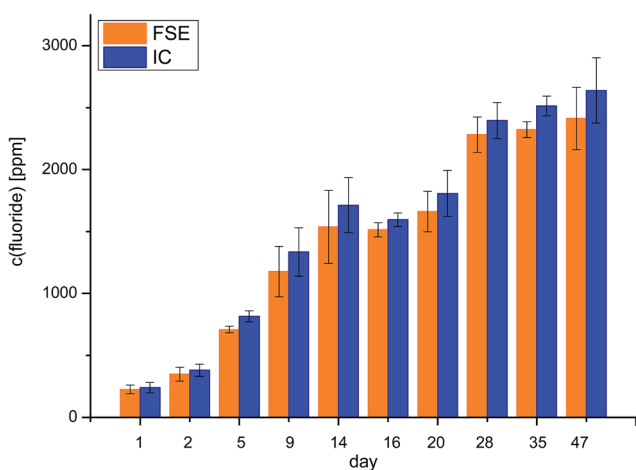


Fig. 2 Fluoride contents in a LP30 electrolyte aged at 80 °C for 1 day up to 47 days. Samples were analyzed by means of IC and FSE. The fluoride concentrations determined by IC are depicted in blue and the fluoride concentrations analyzed by FSE are shown in orange. Simple standard deviations are given as error bars in black. Concentrations observed by FSE are lower than the concentrations observed by IC analysis. Apparently false-high values in IC are due to the co-elution of fluoride and organophosphates. Results of FSE remain unaffected by the formation of aging products such as organophosphates.



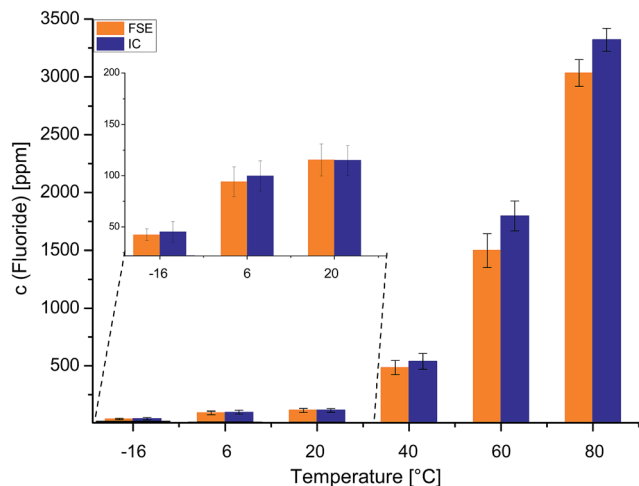


Fig. 4 Fluoride contents in the LP30 aged electrolyte at $-16\text{ }^{\circ}\text{C}$, $6\text{ }^{\circ}\text{C}$, $20\text{ }^{\circ}\text{C}$, $40\text{ }^{\circ}\text{C}$, $60\text{ }^{\circ}\text{C}$ and $80\text{ }^{\circ}\text{C}$, respectively, for 47 days. The samples were analyzed by means of IC and FSE. Concentrations observed by FSE are lower than concentrations observed by IC analysis.

(FSE/IC); $60\text{ }^{\circ}\text{C}$: $1497.8\text{ ppm}/1795.6\text{ ppm}$; $80\text{ }^{\circ}\text{C}$: $3032.6\text{ ppm}/3321.1\text{ ppm}$).

With the exception of the sample stored at $20\text{ }^{\circ}\text{C}$, fluoride concentrations were higher when samples were analyzed by IC. The differences in detected fluoride concentrations $\Delta c(\text{F}^-)$ of FSE and IC analysis yielded again higher differences for samples that were strongly aged. The more a sample was aged and the more LP30 electrolyte degradation products were present, the more results differed for FSE and IC analysis. Especially for strongly aged electrolyte samples the FSE as the fluoride selective method was able to provide a precise analysis, free from interferences with matrix compounds.

4 Conclusions

For the first time, a fluoride selective electrode (FSE) has been applied for the analysis of fluoride in organic carbonates (EC : DEC, EC : EMC, EC : DEC, each (50 : 50, wt%)) as compounds of LiPF_6 -based LIBs electrolytes as well as in LP30 (1 M LiPF_6 in EC : DMC) as a representative of commercially available battery electrolytes. Method validation of FSE for the analysis of fluoride in LiPF_6 -based LIB electrolytes was performed: experimentally achieved concentrations were proven not to differ from nominal concentrations within a 95% confidence level. Samples containing 0.1–5% of the electrolyte can be analyzed by FSE without further compensation of matrix effects. Defined fluoride concentrations spiked to an electrolyte from a freshly opened bottle were recovered as expected over the whole concentration range (0.5–100 ppm). Scattering of analysis values in repeated analysis of samples were proven to be caused by random errors (0.2–2.5% in sixfold analysis on one day; 0.5–3.8% in sixfold analysis for a period of six days consecutively) and are not based on any systematic effects.

Samples containing increasing fluoride concentrations and a typical amount of the electrolyte recovered back from cycled

battery cells yielding a 1% electrolyte solution showed no substantial differences in detected voltages to samples containing the fluoride and no electrolyte. The application of TISAB IV keeps the pH constant avoiding cross-sensitivity with hydroxide ions and fluoride loss due to the formation of HF and HF_2^- . The constant ionic strength allows drawing the desired conclusions from the analyte concentration instead of from the analyte ionic activity. Moreover, reactions of fluoride with metal ions, such as with Al^{3+} , that form complexes, which make analysis more difficult, are avoided. The calibration curve (0.5–100 ppm) yielded a regression coefficient of $R = 0.999$ and a Nernst slope of -58.5 mV at $20\text{ }^{\circ}\text{C}$. LP30 samples were thermally aged at $80\text{ }^{\circ}\text{C}$ for various durations and for 47 days at various temperatures. Fluoride contents were analyzed by means of IC combined with a conductivity detector and by means of FSE. The comparison of the observed fluoride contents yielded an overestimation of fluoride analyzed by IC in strongly aged electrolytes due to co-elution of aging products with the fluoride peak. The FSE method worked free from interferences, selective and specific and thus could be introduced here as a robust tool for fluoride analysis in the complex matrix of battery electrolytes.

Acknowledgements

The authors wish to thank the German Federal Ministry of Education and Research (BMBF) for funding this work in the project 'Elektrolytlabor-4E' (03X4632).

References

- 1 M. S. Frant and J. W. Ross, *Science*, 1966, **154**(3756), 1553–1555.
- 2 A. Barré, B. Deguilhem, S. Grolleau, M. Gérard, F. Suard and D. Riu, *J. Power Sources*, 2013, **241**, 680–689.
- 3 B. Scrosati and J. Garche, *J. Power Sources*, 2010, **195**, 2419–2430.
- 4 J. Vetter, P. Novák, M. R. Wagner, C. Veit, K. C. Möller, J. O. Besenhard, M. Winter, M. Wohlfahrt-Mehrens, C. Vogler and A. Hammouche, *J. Power Sources*, 2005, **147**, 269–281.
- 5 C. L. Campion, W. Li and B. L. Lucht, *J. Electrochem. Soc.*, 2005, **152**(12), A2327–A2334.
- 6 H. Yang, G. V. Zhuang and P. N. Ross Jr, *J. Power Sources*, 2006, **161**, 573–579.
- 7 C. L. Campion, W. Li, W. B. Euler, B. L. Lucht, B. Ravel, J. F. DiCarlo, R. Gitzendanner and K. M. Abraham, *Electrochem. Solid-State Lett.*, 2004, **7**(7), A194–A197.
- 8 P. Handel, G. Fauler, K. Kapper, M. Schmuck, C. Stangl, R. Fischer, F. Uhlig and S. Koller, *J. Power Sources*, 2014, **267**, 255–259.
- 9 T. Kawamura, A. Kimura, M. Egashira, S. Okada and J.-I. Yamaki, *J. Power Sources*, 2002, **104**, 260–264.
- 10 S. S. Zhang, *J. Power Sources*, 2006, **162**, 1379–1394.
- 11 S.-T. Myung, Y. Hitoshi and Y.-K. Sun, *J. Mater. Chem.*, 2011, **21**, 9891–9911.



- 12 L. Terborg, S. Nowak, S. Passerini, M. Winter, U. Karst, P. R. Haddad and P. N. Nesterenko, *Anal. Chim. Acta*, 2012, **714**, 121–126.
- 13 L. Terborg, S. Nowak, F. Blaske, S. Passerini, M. Winter, U. Karst and S. Nowak, *J. Power Sources*, 2013, **242**, 832–837.
- 14 V. Kraft, M. Grützke, W. Weber, M. Winter and S. Nowak, *J. Chromatogr. A*, 2014, **1354**, 92–100.
- 15 V. Kraft, W. Weber, M. Grützke, M. Winter and S. Nowak, *RSC Adv*, 2015, **5**, 80150–80157.
- 16 V. Kraft, M. Grützke, W. Weber, J. Menzel, S. Wiemers-Meyer, M. Winter and S. Nowak, *J. Chromatogr. A*, 2015, **1409**, 201–209.
- 17 G. Gachot, S. Grugeon, M. Armand, S. Pilard, P. Guenot, J.-M. Tarascon and S. Laruelle, *J. Power Sources*, 2008, **178**, 409–421.
- 18 V. Kraft, W. Weber, B. Streipert, R. Wagner, C. Schulz, M. Winter and S. Nowak, *RSC Adv.*, 2016, **6**, 8–17.
- 19 G. Gachot, P. Ribière, D. Mathiron, S. Grugeon, M. Armand, J.-B. Leriche, S. Pilard and S. Laruelle, *Anal. Chem.*, 2011, **83**, 478–485.
- 20 G. Gachot, S. Grugeon, G. G. Eshetu, D. Mathiron, P. Ribière, M. Armand and S. Laruelle, *Electrochim. Acta*, 2012, **83**, 402–409.
- 21 L. Terborg, S. Weber, S. Passerini, M. Winter, U. Karst and S. Nowak, *J. Power Sources*, 2014, **245**, 836–840.
- 22 W. Weber, V. Kraft, M. Grützke, R. Wagner, M. Winter and S. Nowak, *J. Chromatogr. A*, 2015, **1394**, 128–136.
- 23 J. Koryta, *Anal. Chim. Acta*, 1984, **159**, 1–46.
- 24 S. Kromidas, *Handbuch Validierung in der Analytik*, Wiley-VCH Verlag & Co. KGaA, Weinheim, Deutschland, 2011.
- 25 WTW – Die ionenselektive Messtechnik: https://www.omnilab.de/tl_files/Omnilab_2011/Downloads/Infomaterial_Anwenderberichte/Elektrochemie/ISE_D.pdf, accessed May 2016.
- 26 Umweltbundesamt – Qualitätssicherungsstelle im Bund/Länder-Messprogramm Nord- und Ostsee (BLMP), Leitlinie zur Methodenvalidierung 01/05, J. Wellnitz and M. Gluschke; <https://www.umweltbundesamt.de/sites/default/files/medien/publikation/long/2832.pdf>, accessed May 2016.
- 27 E. Lindner and B. D. Pendley, *Anal. Chim. Acta*, 2013, **762**, 1–13.
- 28 D. G. Altman and J. M. Bland, *The Statistician*, 1983, **32**, 307–317.
- 29 J. M. Bland and D. G. Altman, *The Lancet*, 1986, **30**, 307–310.
- 30 J. M. Bland and D. G. Altman, *The Lancet*, 1995, **346**(8982), 1085–1087.
- 31 Metrohm – Application Bulletin Nr. 82/3 d-Bestimmung von Fluorid mit der ionenselektiven Elektrode, https://www.google.de/url?sa=t&rct=j&q=&esrc=s&source=web&cd=1&cad=rja&uact=8&ved=0ahUKewinqvHJltfMAhXHORQKHSMyCUkQFggdMAA&url=http%3A%2F%2Fpartners.metrohm.com%2FGetDocument%3Faction%3Dget_dms_document%26docid%3D692912&usq=AFQjCNH2B9Q4sCUI8pXaYNmhWspOlcyJ1g&sig2=IBOEzdoKhOiWv5sEpX_ZSQ, accessed May 2016.
- 32 M. S. Frant and J. W. Ross, *Anal. Chem.*, 1968, **40**(7), 1169–1171.
- 33 J. E. Harwood, *Water Res.*, 1969, **3**, 273–280.
- 34 E. Krämer, T. Schedlbauer, B. Hoffmann, L. Terborg, S. Nowak, H. J. Gores, S. Passerini and M. Winter, *J. Electrochem. Soc.*, 2013, **160**(2), A356–A360.
- 35 IC Application Work: AW DE8-0768-122010: Determination of hexafluorophosphate and lithium in battery electrolyte.

