


 Cite this: *RSC Adv.*, 2015, 5, 43209

Extraction of lithium-ion battery electrolytes with liquid and supercritical carbon dioxide and additional solvents

Martin Grützke, Xaver Mönnighoff, Fabian Horsthemke, Vadim Kraft, Martin Winter and Sascha Nowak*

A flow-through method for the extraction of lithium-ion battery electrolytes with supercritical and liquid carbon dioxide (sc and liq CO₂) under the addition of different solvents has been developed and optimized to achieve quantitative extraction of the electrolyte from commercial LiNi_{1/3}Co_{1/3}Mn_{1/3}O₂ (NMC)/graphite 18 650 cells. Furthermore, the time-dependence of the extraction procedure was investigated and demonstrated. The extracts were analyzed with gas and ion chromatography. Linear carbonates like dimethyl carbonate (DMC) and ethyl methyl carbonate (EMC), respectively, were better extracted with liq CO₂, whereas the cyclic carbonate ethylene carbonate (EC) was recovered in higher amounts with sc CO₂. The addition of solvents to the CO₂ resulted in improved recovery for all the ingredients but most effectively for LiPF₆, which could not be obtained by extraction with CO₂ only. The best results were achieved by extracting for 30 minutes with liq CO₂ (25 °C, 60 bar) and 0.5 mL min⁻¹ acetonitrile (ACN)/propylene carbonate (PC) in a mixture of three to one and an additional 20 minutes with liq CO₂ only, to yield (89.1 ± 3.4) wt% electrolyte in almost its original composition of DMC, EMC, EC (1 : 1 : 1) with 1.1 mol L⁻¹ LiPF₆. Therefore, the presented method can be relevant for the recycling of lithium ion battery electrolytes but has to be validated for up-scaled processes. Furthermore, the suitability of CO₂ extraction as a tool for post-mortem or aging investigations of LIB electrolytes could once more successfully be demonstrated due to the extraction of aging products like diethyl-2,5-dioxahexane dicarboxylate (DEDOHC) from a pouch cell, which was electrochemically aged for 1000 cycles at 1 C. In this context, extraction times and recovery rates were drastically improved compared to our previously reported static extraction experiments.

 Received 13th March 2015
Accepted 8th May 2015

DOI: 10.1039/c5ra04451k

www.rsc.org/advances

1. Introduction

Besides its well-known role as a greenhouse gas in climate change discussions,^{1–4} carbon dioxide also takes part in many chemical reactions. It is for example used in the synthesis of linear^{5–8} and cyclic⁹ organic carbonates, which are, *inter alia*, solvents for conducting salts, typically LiPF₆,¹⁰ in modern lithium-ion batteries (LIBs).^{11,12} CO₂ has also been used as a solid electrolyte interphase (SEI)¹³ forming electrolyte additive in lithium metal and lithium-ion batteries¹⁴ and is produced when the organic carbonate based electrolyte solvents are oxidized, *e.g.* during overcharge¹⁵ in some cases. CO₂ is also generated during the reduction of organic carbonate based battery electrolytes.^{16,17} Furthermore, graphite anode surface modification with CO₂ has been performed.^{18,19} Moreover, CO₂ is widely applied as a monomer in materials synthesis²⁰ or a C-1

block in the synthesis of polycarbonates²¹ and other organic products.²²

In addition to its gaseous, liquid and solid phase, carbon dioxide shows a relatively easy available supercritical phase after adjusting temperature and pressure above the critical point which is at 31 °C and 74 bar.²³ The dissolving properties of sc CO₂ are comparably high for many organic substances, especially in combination with additional solvents. Thus, CO₂ is the most applied extraction medium in supercritical fluid extraction (SFE).²⁴ The most prominent example for the application of sc CO₂ extraction might be the decaffeination process of coffee.^{25,26} Likewise, sc CO₂ is generally used a lot as extraction medium in food chemistry.^{27–29} Furthermore, its usage as eluent is also important in supercritical fluid chromatography (SFC),²⁴ as drying agent in crack free silica aerogel production^{30,31} and as reaction medium in olefin polymerization reactions³² or metal nanoparticle synthesis.³³

Sloop *et al.* described the extraction of electrolytes from energy storage devices with supercritical fluids.³⁴ LIBs were mentioned in this patent but detailed information about the extraction behavior were rare. LIBs are the most applied energy

University of Münster, MEET Battery Research Center, Institute of Physical Chemistry, Corrensstraße 46, 48149 Münster, Germany. E-mail: sascha.nowak@uni-muenster.de; Fax: +49-251-83 36032



storage systems for modern consumer and portable electronics like smartphones and cameras, and the most promising battery technology for electric or hybrid electric vehicles.^{35,36} LIBs usually consist of a graphitic anode and a transition metal oxide⁷⁷ or phosphate cathode⁷⁸ with a polymeric or ceramic separator in between. A non-aqueous aprotic electrolyte serves for charge transfer in form of lithium-ions. Electrolytes for LIBs are made of different linear carbonates (e.g. dimethyl carbonate (DMC) and ethyl methyl carbonate (EMC)) in a mixture with ethylene carbonate (EC).^{11,12,37} LiPF₆ is generally used as conducting salt and dissolved in this solution in concentrations of about 1 mol L⁻¹. Moreover, additives for various electrolyte properties can be present.^{38,39} Dimethyl methylphosphonate can be applied as flame retardant,⁴⁰ cyclohexylbenzene for overcharge protection¹¹ and vinylene carbonate as film forming additive for controlled formation of the SEI.^{11,12,41–46}

Different aging processes occur in LIBs which lead to a creeping loss of capacity and a limited cell lifetime.⁴⁷ One of these aging effects is the decomposition of the electrolyte during cycling which is furthermore influenced by the temperature and the quality of each and every compound in the cell, especially with regards to protic impurities. Research on electrolyte decomposition as well as the development of new and specific analytical methods has been done in recent years,^{38,48–67} but there is still a far way to go until the complete picture of electrolyte aging in LIBs is fully understood. Furthermore, the quantitatively extraction from the LIBs is of interest for recycling processes. Since 50 wt% of a cell has to be recovered, the electrolyte represents a target component for the recycling of LIBs. Additionally, fluoride or fluorinated compounds can hamper or damaged industrial scaled recycling processes and have to be removed as well.

We recently reported the extraction of LIB electrolytes with supercritical helium head pressure carbon dioxide (sc HHPCO₂) in a simple autoclave setup.⁶³ A successful proof of principle experiment was demonstrated. Furthermore, the sc HHPCO₂ extraction could be presented as sample preparation tool for LIB post-mortem aging investigations. HHPCO₂ was used in these experiments to keep the experimental equipment as easy as possible. Sc CO₂ conditions can be achieved without a compressor already from the bottle. Nevertheless, HHPCO₂ is more expensive than conventional liq CO₂ with the same purity. Furthermore, the recovery rate for the electrolyte from the investigated 18 650 cells was relatively low (<10 wt%). Moreover, it was not possible to obtain the conducting salt but only the organic carbonates. To overcome these drawbacks and to further investigate the extraction of LIB electrolytes with CO₂ we installed a conventional flow-through SFE extraction unit. Herein, we report the results for the extraction of commercial 18 650 cells (2.2 Ah) as well as in-house-made pouch cells (4.8 Ah), both based on LiNi_{1/3}Co_{1/3}Mn_{1/3}O₂ (NMC)/graphite electrode chemistry, with liquid and supercritical carbon dioxide regarding the recovery rate of the particular electrolyte components, additional solvents in the CO₂-stream and the time dependency of the extraction procedure. Since, one investigation was the recycling and aging of LIBs, we decided to

use electrolytes which are state-of-the-art in commercial applied LIBs. Nevertheless, it is still possible to investigate alternative systems.

2. Experimental

2.1. Chemicals and materials

Panasonic CGR18650CH Li-ion MH12210 (2.2 Ah, NMC/graphite) were bought from BattEnergy. 18 650 cells are often used for safety investigations,^{68–70} and are generally applied in laptops and E-bikes. 4.8 Ah NMC/graphite pouch cells were fabricated with an in-house battery line. Anhydrous acetonitrile (ACN) (99.8%) from Sigma-Aldrich, and dry and fresh battery grade diethyl carbonate (DEC; 99.9%) and propylene (PC) (99.9%) from BASF were used for solvent addition in the CO₂ extraction experiments. DMC (99.9%), EMC (99.0%), DEC (99.9%) and EC (99.9%) for gas chromatography (GC) experiments, tartaric acid (99.5%), dipicolinic acid (99.0%), Na₂CO₃ (Certipur), NaHCO₃ (99.7%) and H₂SO₄ (0.1 mol L⁻¹) were purchased from Merck. Aqueous lithium standard solution (TraceCert IC standard, 1 g L⁻¹ Li⁺, ≤0.1% HNO₃) and aqueous fluoride standard solution (TraceCert IC standard, 1 g L⁻¹ NaF) were supplied by Fluka. ACN (99.9%, HiPerSolv CHROMA-NORM, LC-MS grade) from VWR and Milli Q water, produced with an in-house Millipore filter system were used for sample dilution. CO₂ (purity 5.0) for SFE and helium (purity 6.0) for GC experiments were purchased from Westfalen Gas.

2.2. Cell cycling procedures

The pouch cells were cycled with a Maccor Series 4000 Battery Tester 20A in an environmental test chamber (Binder KB 400) at 20 °C. The cells were charged with 0.2 C in constant current mode up to a voltage of 4.2 V, followed by a constant voltage step at 4.2 V for 30 min. The discharge was performed with 1 C in constant current mode down to a voltage of 3.0 V. Subsequently, the cell was charged and discharged with 1 C (constant current) between 3.0 V and 4.2 V for 1000 cycles. Before opening the cells an extended discharge step was carried out, composed of successive and decreasing constant current steps each until a voltage of 3.0 V and constant rest periods between the discharge steps.

2.3. Sample preparation

The discharged cells (18 650 and pouch) were frozen at −18 °C for at least 10 h, so that electrolyte evaporation during cell opening is reduced to a minimum, and subsequently opened in a glove box (O₂, H₂O < 0.1 ppm) by slicing the two ends of the metal shell with an industrial cutter (18 650 cells), similar to the self-made cutter of Aurbach *et al.*,⁷¹ or by cutting the outer pouch foil with ceramic scissors (pouch cells). The jelly role as well as the stack, were removed of the shell, uncoiled and put, as dense as possible, into the pressure chamber of the extraction equipment.



2.4. Extraction procedure

After connecting the extraction chamber to the CO₂ supply and adjusting pressure and temperature in the chamber to extraction conditions (liquid: 25 °C, 60 bar; supercritical: 40 °C, 300 bar), the experiment begun with a static (non-flow-through) equilibration step which was hold for 30 min, followed by 2 min of CO₂ flow-through with subsequent 5 min static (non-flow-through) equilibration, in which the amount of collected extract was weighted (experiments in Fig. 1 and 2). The outlet valve of the CO₂-extraction-stream was heated to 55 °C and the electrolyte was collected with a cryogenic trap of aluminum (−78 °C) behind the outlet valve.

For the results in Fig. 3–6, additional solvent (ACN, DEC, PC) with a flow of 0.5 mL min^{−1} was added to the CO₂-stream. After an equilibration step of 30 min at the beginning with CO₂, but without solvent, it was extracted in flow-through for two minutes with subsequent 5 min of static equilibration time. The

(2 + 5) min step was repeated 15 times, followed by 20 min flow-through extraction without solvent (only CO₂).

2.5. Analytical equipment

Supercritical fluid extraction (SFE) unit. All extraction experiments were done in a dry room (dew point: −65 °C; H₂O < 5.4 ppm). An Applied Separations Spe-ed SFE System purchased from ERC, which is equipped with a Knauer Platin Blue UHPLC pump for solvent addition, was used for the extraction experiments. The extraction chamber (50 mL for 18 650 cells and 100 mL for pouch cells) and all gas lines consist of stainless steel. At the beginning of each extraction experiment, the device was investigated for gas leaks. Furthermore, the CO₂ flow was adjusted to (15 ± 3) L min^{−1}.

Ion chromatography (IC). A Metrohm 850 Professional IC with conductivity detection, an 889 IC Sample Center and the Magic Net 2.2 software was used. Samples were diluted appropriately with water for cation analysis to a Li⁺ concentration between 1–25 mg kg^{−1} and 10 µL were injected. An aqueous eluent with 4 mmol L^{−1} tartaric acid and 0.75 mmol L^{−1} dipicolinic acid (which is also used as chelate ligand for hepta-coordinated Ti^{IV} complexes)⁷² was used with a flow of 0.7 mL min^{−1} on a Metrosep C 4-150/4.0 + Metrosep C 4 Guard/4.0 column at a temperature of 40 °C. Li⁺ was quantified applying an external six-point calibration ($R^2 > 0.9999$) in a range between 0.2 mg kg^{−1} to 25 mg kg^{−1}. Each point and sample was measured two times. The limit of detection (LOD) and the limit of quantification (LOQ) for Li⁺ and the applied conditions according to DIN 32645 are 162 µg kg^{−1} and 604 µg kg^{−1}, respectively.

Samples were diluted 1 : 10 to 1 : 50 with water for anion analysis and 20 µL were injected. An aqueous eluent with 1.8 mmol L^{−1} Na₂CO₃ and 1.7 mmol L^{−1} NaHCO₃ was used with a flow of 1 mL min^{−1} on a Metrosep A Supp 4-250/4.0 + Metrosep A Supp 4/5 Guard/4.0 column at a temperature of 40 °C. After 10 min, a gradient step was applied and over 3 min, ACN was added up to a concentration of 50 vol%. F[−] could be confirmed *via* the retention time of a standard solution. PO₂F₂[−], PF₆[−] and

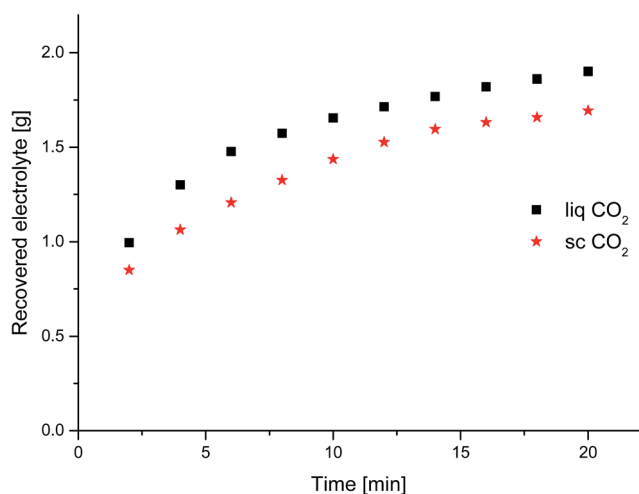


Fig. 1 Time dependency of the amount of recovered electrolyte from commercial 18 650 cells after formation extracted with supercritical (300 bar, 40 °C; red stars) and liquid (60 bar, 25 °C; black squares) CO₂.

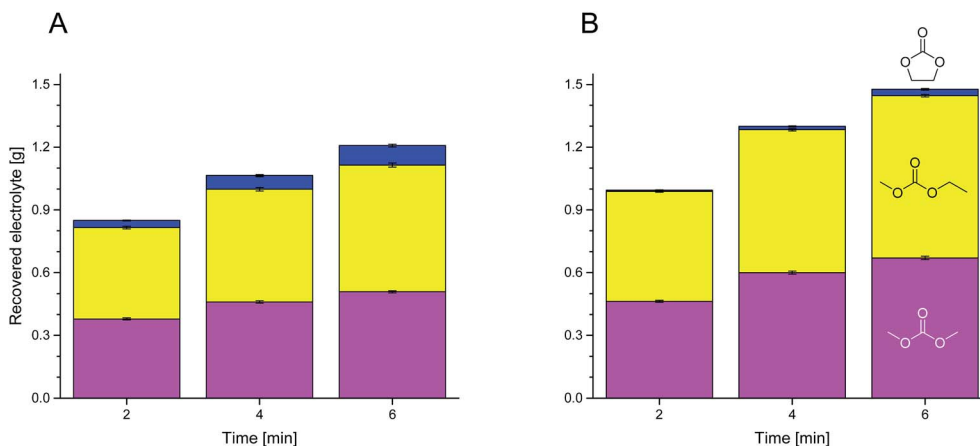


Fig. 2 Compositions of the recovered electrolyte from commercial 18 650 cells after formation extracted with supercritical (A) and liquid (B) CO₂ for the first three data points of Fig. 1 determined with GC-MS. Blue, top: EC; yellow, middle: EMC; magenta, bottom: DMC.



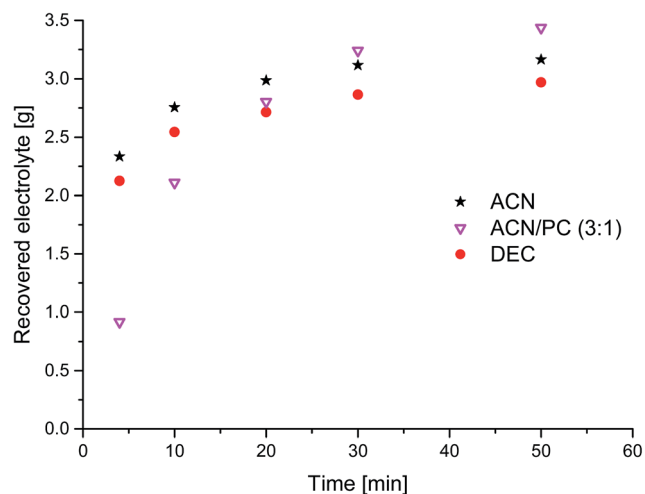


Fig. 3 Time dependency of the amount of recovered electrolyte from commercial 18 650 cells after formation extracted with liquid CO₂ and 0.5 mL min⁻¹ additional solvents (black stars: ACN; magenta triangles: ACN-PC (3 : 1); red circles: DEC).

alkyl fluoro phosphates were identified with IC hyphenated to electrospray ionization-mass spectrometry (ESI-MS). Equipment, procedure and conditions were recently published and applied.^{60,64,65}

Gas chromatography-mass spectrometry (GC-MS). A Shimadzu GCMS-QP2010 Ultra GC-MS equipped with an AOC-5000 Plus autosampler, an OPTIC-4 injection system and a Supelco SLB-5ms column (30 m × 0.25 mm × 0.25 μm) was used. The GCMS Solution software (GCMS Real Time Analysis and GCMS Postrun Analysis) and the Evolution Workstation software were used for setup control and data analysis. DMC, EMC, DEC, PC, vinylene carbonate (VC) and EC could clearly be identified with the National Institute of Standards (NIST) 08 library and DEDOHC with chemical ionization GC-MS experiments.⁶³ The results could be confirmed *via* the retention time of the corresponding pure substances. 1 μL of the diluted samples (1 : 100, ACN) was injected at an injection temperature of 230 °C. The system was run with helium as carrier gas with a column flow of 1 mL min⁻¹, a purge flow of 3 mL min⁻¹, a split of 1 : 100 and the following column oven program: starting with 40 °C for 2 min, the temperature was increased with a rate of 30 °C min⁻¹ to 230 °C and held for 2.67 min. It was measured in the electron ionization (EI) mode at an ion source temperature of 200 °C, a filament voltage of 70 V, a detector voltage, which was chosen relative to the particular tuning result (~1 kV) in a range of 25–300 *m/z* with an event time of 0.1 s and a GC-MS interface temperature of 250 °C.

Quantitative results were obtained with appropriate dilution of the samples to be within the external five-point calibration ($R^2 > 0.999$) in a range of 10 mg kg⁻¹ to 1500 mg kg⁻¹ (10 mg kg⁻¹ to 100 mg kg⁻¹ for DEDOHC) under the same GC-MS conditions as just described but with single ion monitoring (SIM) *via* the following ions: DMC (59 *m/z*), EMC (77 *m/z*), DEC (91 *m/z*), PC (102 *m/z*), EC (88 *m/z*) and DEDOHC (89 *m/z*). Each sample and concentration was measured two times. Limits of

detection (LOD) and limits of quantification (LOQ) were determined according to DIN 32645: DMC (31.7 mg L⁻¹, 121.0 mg kg⁻¹), EMC (14.9 mg kg⁻¹, 56.9 mg kg⁻¹), DEC (12.0 mg kg⁻¹, 46.3 mg kg⁻¹), PC (11.7 mg kg⁻¹, 49.4 mg kg⁻¹), EC (13.3 mg kg⁻¹, 51.1 mg kg⁻¹) and DEDOHC (3.6 mg kg⁻¹, 14.0 mg kg⁻¹).

3. Results and discussion

First of all, it was necessary to develop a suitable extraction method to extract and collect a LIB electrolyte with the Applied Separations Spe-ed SFE System extraction equipment. We started by putting a LIB electrolyte (each experiment the same amount) containing polyethylene fleece separator into the extraction chamber of the extraction equipment. For the development of an appropriate collection method, the sample was always extracted under the same supercritical conditions: 40 °C, 80 bar CO₂ in flow-through mode for one hour. The outlet valve of the extraction device is heated, which is necessary due to the Joule-Thomson-Effect.⁷³ This temperature was set to 55 °C because of the possible thermal decomposition of LiPF₆ at higher temperature.⁷⁴ It was proven, that collecting the electrolyte from the CO₂-stream during pressure relaxation with a cryogenic trap (aluminum vial at -78 °C) resulted in better recovery of the electrolyte than washing solutions with different organic solvents (*e.g.* ACN). Furthermore, it is advisable to pack the sample in the extraction chamber as dense as possible to get good extraction results, otherwise the CO₂, as extraction medium, just passes by the sample without leaching it.

After adjusting these first parameters, further method development was done with 2.2 Ah, NMC/graphite commercial 18 650 cells (Panasonic CGR18650CH Li-ion MH12210). The uncoiled jelly roll was densely packed into the extraction chamber. Variation of the pressure at supercritical extraction conditions (40 °C, 80 bar *vs.* 300 bar) resulted only in slightly different recovery rates at the same CO₂ flow, whereas variation of the flow at the same pressure gave much higher recovery rates (by weight) in the same time. Unfortunately this parameter was limited due to the mentioned Joule-Thomson-Effect because CO₂ simply freezes out in the cryogenic trap when the flow is too high. Thus, the flow was adjusted to 15 L min⁻¹ at the outlet valve for all further experiments as good compromise between high flow rate (which means short extraction times) and resublimating CO₂. The CO₂ flow control of the outlet valve over time showed, that the used extraction equipment could not better be adjusted than within 20% relative standard deviation which means a CO₂ flow of (15 ± 3) L min⁻¹.

Two different CO₂ conditions were compared. While extracting with liq CO₂ (25 °C, 60 bar), we reproducibly achieved a higher amount of extracted electrolyte at the same extraction time and volumetric flow as with sc CO₂ (40 °C, 300 bar). This may be explained by differences due to the flow behavior of liquid CO₂ compared to sc CO₂ (laminar *vs.* non-laminar). We further investigated this behavior in a time-resolved experiment (Fig. 1), which confirmed our results. Most of the extracted amount is obtained in the first minutes. Also the better recovery with liq CO₂ already happens at the beginning of the extraction. The demonstrated data show exponential behavior over time.



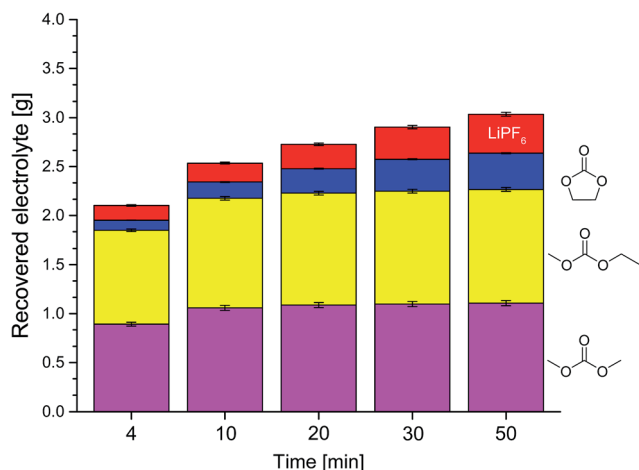


Fig. 4 Compositions of the recovered electrolyte from commercial 18 650 cells after formation extracted with liquid CO₂ and additional DEC in the CO₂-stream determined with GC-MS and IC corresponding to Fig. 3. Red, top: LiPF₆; blue, below: EC; yellow, middle: EMC; magenta, bottom: DMC.

and therefore the deviation during. Analyses of the extracts of the first minutes with GC-MS reveal that the linear carbonates, DMC and EMC, are extracted with higher efficiency than EC (Fig. 2). Interestingly, the higher amount which is achieved with liq CO₂ is only linear carbonates. Compared to liq CO₂, extraction with sc CO₂ is better suited for EC. CO₂ is a relatively nonpolar extraction medium²⁶ which explains why the more polar EC (dipole moment: 4.61 D) is less well extracted than DMC (0.76 D) and EMC (0.89 D).¹¹ This nonpolarity is also the reason for the poor extraction of the conducting salt which could only be gained in trace amounts (as confirmed by IC), which was also observed for the extraction of the same 18 650 cells with sc HHPCO₂ with a different experimental setup.⁶³ The amount of electrolyte in the investigated 18 650 cells was determined to 3.76 g by drying an opened cell at 120 °C in

vacuum over 10 hours. We concluded that this amount could not be reached under the so far applied extraction conditions. Only the linear carbonates could quantitatively be recovered after a very long extraction time (over 3 h).

To overcome (i) these drawbacks of long extraction times, (ii) the small concentration of EC and (iii) the not extracted conducting salt, extraction experiments with added solvents to the liq CO₂ were realized. The time-resolved results for three different additional solvents are summarized in Fig. 3. The exponential behavior ends at 50 min of extraction time at recovery rates which are much higher compared to extraction with sc CO₂ or liq CO₂ without additional solvents. The experiments with ACN and DEC show a similar trend with high recovery rates in the first minutes compared to the ACN/PC mixture, which leads to an indolent extraction at first, but finishes with the best overall result. An experiment with only PC as added solvent was also carried out but the collected extract was with about 2 g after the applied extraction method of 50 min much less than the three scenarios demonstrated in Fig. 3. Furthermore, a large amount of the PC apparently remained in the solid battery material during this time, which could be confirmed by weight and also by the 'wet' solid battery material after the extraction chamber was opened for cleaning purposes subsequent to the extraction experiment. Thus, it can be concluded that the addition of very polar solvents (dipole moment PC: 4.81 D)¹¹ is only reasonable when additional solvents with medium polarity are present, that act as "moderator" between very polar solvent and the rather unpolar CO₂.

Fig. 4 shows the compositions of the extracts over the whole period of extraction with DEC as additional solvent. The trend is identical to the extraction process without additional solvent. The linear carbonates (DMC and EMC) are extracted well in the first minutes, but the absolute amount is almost doubled compared to extraction with CO₂ only. Furthermore, also high recoveries of EC and even of the conducting salt LiPF₆ could be achieved. Fig. 5 demonstrates the GC-MS measurements

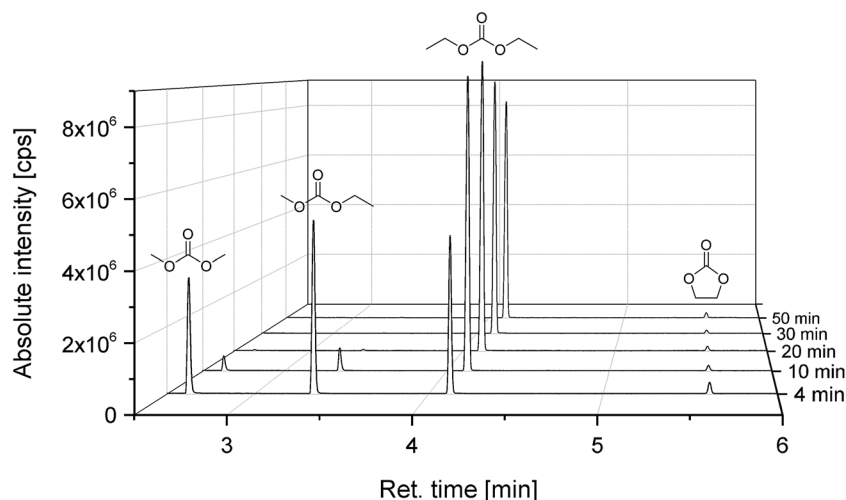


Fig. 5 Chromatograms (GC-MS) of the time-resolved electrolyte recovery which was extracted with liquid CO₂ and additional DEC, corresponding to Fig. 3 and 4.



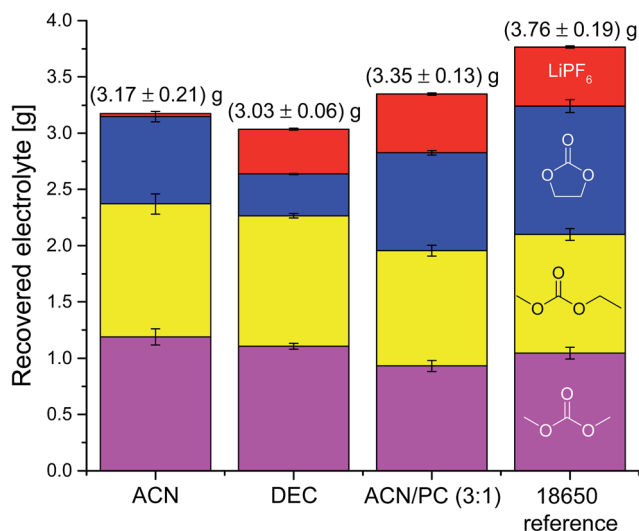


Fig. 6 Compositions and amounts (determined with GC-MS and IC) of the recovered electrolytes from commercial 18 650 cells after formation extracted with liquid CO₂ and additional solvents for 30 min, with subsequent 20 min without additional solvent. Red, top: LiPF₆; blue, below: EC; yellow, middle: EMC; magenta, bottom: DMC.

corresponding to the compositions of the volatile components in Fig. 4. It can be seen that the linear carbonates are only significantly extracted in the first 20 min, whereas EC is present in the same magnitude till the end of the extraction experiment. Fig. 6 summarizes the amounts of recovered electrolyte and their compositions for the three discussed scenarios (see Fig. 3). Additionally, the composition of a reference electrolyte is shown. The reference data are the result of the quantitative investigation of electrolyte (10 µL) which was collected during cell opening. The resulted weight percentages are normalized to the amount of electrolyte per 18 650 cell. In all cases of extraction with liq CO₂ and additional solvents, the linear carbonates could be recovered quantitatively within the limits of error; EC

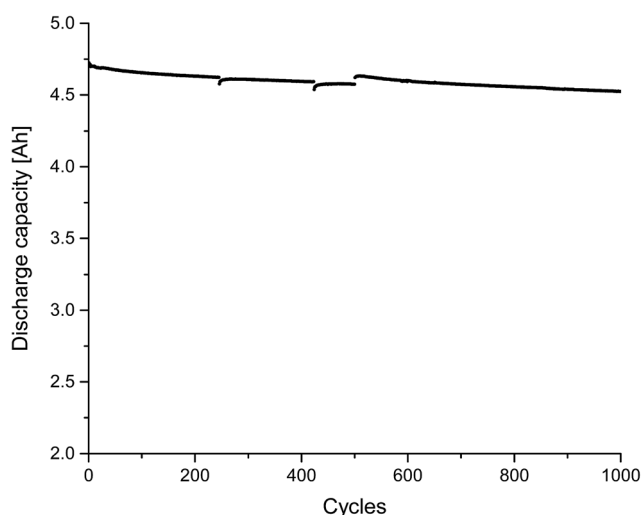


Fig. 7 Discharge capacities for an in-house-made 4.8 Ah pouch cell (cycled at room temperature at a rate of 1 C between 3.0 V and 4.2 V).

Table 1 Composition (wt%) of the reference electrolyte applied in pouch cells determined with GC-MS and IC

DEC	PC	EC	VC	LiPF ₆
46.9 ± 2.2	4.5 ± 0.1	32.4 ± 0.7	2.0 ± 0.1	11.7 ± 0.3

and LiPF₆ could be retrieved at least qualitatively. The best overall recovery rate was achieved for the added ACN/PC mixture, with (89.1 ± 3.4) wt% and furthermore with the highest concentrations for EC and LiPF₆.

Finally, we also investigated self-made pouch cells (graphite/NMC) after formation and after “electrochemical aging”, which were bigger than the so far used 18 650 cells (4.8 Ah vs. 2.2 Ah). The results of the cycling experiment (=electrochemical aging) for 1000 charge/discharge cycles at a rate of 1 C are displayed in Fig. 7. An electrolyte consisting of 1 mol L⁻¹ LiPF₆ in a DEC, PC, EC, VC mixture was applied (quantitative composition see Table 1). All components, except VC, could be detected in the extract, which was achieved with liq CO₂ and ACN as additional solvent. PC as additional solvent was not applied in this case due to its presence in the cells and therefore possible difficulties in quantification of the extract. VC had presumably been consumed during the formation cycle and thus been involved in the SEI formation.^{11,55} In addition to the deployed electrolyte components, DEDOHC, which is an electrolyte aging product, whose formation was already intensively discussed in literature,^{48,51,54–58,63,66} could clearly be identified. This confirms the result of our previous study, that CO₂ can be applied as extraction agent for post-mortem or aging investigations. Fig. 8 shows the GC-MS chromatograms corresponding to the aged cell and, consequently, the extract compositions of the collected fractions. The same picture was achieved for the cell after formation. The findings for DEC, EC and PC are in good agreement to the results of the 18 650 cells.

DEDOHC could be extracted from the cells after formation and cycling, in the same amount of (0.4 ± 0.1) wt% within the first four minutes. Therefore, it is concluded, that DEDOHC is

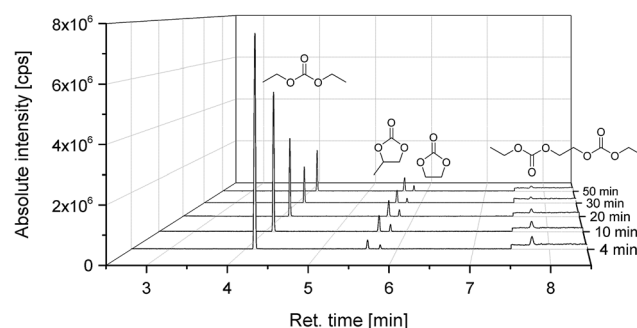


Fig. 8 Chromatograms (GC-MS) of the time-resolved electrolyte recovery from a cycled (=electrochemically aged) pouch cell (Fig. 7) which was extracted with liquid CO₂ and additional ACN. The absolute intensity is amplified by one order of magnitude for the last minute of retention time.



only formed during formation. The 18 650 cell showed a different aging behavior in this case. The concentrations of DEDOHC and its derivatives were in correlation with an ongoing film growth during cycling.⁶³ The reason for this difference could be the presence or absence, respectively of VC as electrolyte additive for controlled SEI formation.¹¹ On the other hand, the pouch cells showed a state-of-health (SOH) of over 97% after 1000 cycles (Fig. 7), compared to 70% SOH for the 18 650 cells, which makes a quantitative comparison of the two cell types difficult.

Moreover, we could detect traces of decomposition products of the conducting salt LiPF_6 , such as F^- , PO_2F_2^- and different fluoro phosphates with IC and IC hyphenated to electrospray ionization mass spectrometry (ESI-MS) in all samples, even for the cells, which were extracted without additional solvents. This confirms once more the suitability of CO_2 extraction as sample preparation tool for post-mortem or aging investigations of LIB electrolytes.

4. Conclusions

The extraction behavior of supercritical and liquid carbon dioxide with and without additional solvents has been investigated in flow-through experiments regarding the recovery of electrolytes from lithium-ion batteries. The extracts were analyzed with GC-MS and IC for their compositions. For an electrolyte containing LiPF_6 , DMC, EMC and EC, extraction with liq CO_2 resulted in higher recovery for linear carbonates (DMC, EMC) and lower for EC but in a higher overall yield compared to extraction with sc CO_2 . The extraction of the electrolyte ingredients was improved by application of additional solvents to the CO_2 and, furthermore, also LiPF_6 was extracted. Maximum recovery rates were achieved with mixtures of different solvents. It was demonstrated, that the electrolyte of a Panasonic 18 650 cell was recovered in (89.1 ± 3.4) wt% almost quantitatively with liq CO_2 and ACN-PC (3 : 1) as additional solvents. Thus, we conclude, that it is generally possible to apply CO_2 extraction to used battery cell electrolytes by properly adjusting the extraction conditions (especially the additional solvents) to the individual cell components (electrode materials, separator, electrolyte and geometry) which should be extracted. This promising procedure could be an alternative for distortion of the electrolyte in LIB recycling,⁷⁵ and even for solvent extraction.⁷⁶ However, the developed method is a suitable tool for LIB electrolyte and post-mortem or aging investigations because a qualitative overview can already be achieved after a few minutes of extraction also for apparently 'dry' cells, where the electrolyte is deeply penetrated in the solid battery material. The application of this tool for a screening of different aged cells from several battery suppliers is currently in preparation.

Acknowledgements

We kindly acknowledge the Federal Ministry for the Environment, Nature Conservation and Nuclear Safety for funding of the project LithoRec II (project grant number: 16EM1025) in which the results in this manuscript could be achieved.

References

- 1 S. Pan, H. Tian, S. R. S. Dungal, Q. Yang, J. Yang, C. Lu, B. Tao, W. Ren and Z. Ouyang, *Earth's Future*, 2015, **3**, 15–35.
- 2 Z. Morales-Reyes, J. M. Perez-Garcia, M. Moleon, F. Botella, M. Carrete, C. Lazcano, R. Moreno-Opo, A. Margalida, J. A. Donazar and J. A. Sanchez-Zapata, *Sci. Rep.*, 2015, **5**, 7811.
- 3 S. M. Rahman and G. A. Kirkman, *Energ. Econ.*, 2015, **47**, 129–141.
- 4 J. Hansen, M. Sato, P. Kharecha, D. Beerling, R. Berner, V. Masson-Delmotte, M. Pagani, M. Raymo, D. L. Royer and J. C. Zachos, *Open Atmos. Sci. J.*, 2008, **2**, 217–231.
- 5 S. Fang and K. Fujimoto, *Appl. Catal., A*, 1996, **142**, L1–L3.
- 6 N. S. Isaacs, B. O'Sullivan and C. Verhaelen, *Tetrahedron*, 1999, **55**, 11949–11956.
- 7 T. Sakakura, J.-C. Choi, Y. Saito and T. Sako, *Polyhedron*, 2000, **19**, 573–576.
- 8 S. Camy, J. S. Pic, E. Badens and J. S. Condoret, *J. Supercrit. Fluids*, 2003, **25**, 19–32.
- 9 A. Buonerba, A. De Nisi, A. Grassi, S. Milione, C. Capacchione, S. Vagin and B. Rieger, *Catal. Sci. Technol.*, 2015, **5**, 118–123.
- 10 R. W. Schmitz, P. Murmann, R. Schmitz, R. Müller, L. Krämer, J. Kasnatscheew, P. Isken, P. Niehoff, S. Nowak, G.-V. Röschenthaler, N. Ignatiev, P. Sartori, S. Passerini, M. Kunze, A. Lex-Balducci, C. Schreiner, I. Cekic-Laskovic and M. Winter, *Prog. Solid State Chem.*, 2014, **42**, 65–84.
- 11 K. Xu, *Chem. Rev.*, 2004, **104**, 4303–4418.
- 12 K. Xu, *Chem. Rev.*, 2014, **114**, 11503–11618.
- 13 H. Schranzhofer, J. Bugajski, H. J. Santner, C. Korepp, K. C. Möller, J. O. Besenhard, M. Winter and W. Sitte, *J. Power Sources*, 2006, **153**, 391–395.
- 14 J. O. Besenhard, M. W. Wagner, M. Winter, A. D. Jannakoudakis, P. D. Jannakoudakis and E. Theodoridou, *J. Power Sources*, 1993, **44**, 413–420.
- 15 C. Dippel, R. Schmitz, R. Müller, T. Böttcher, M. Kunze, A. Lex-Balducci, G.-V. Röschenthaler, S. Passerini and M. Winter, *J. Electrochem. Soc.*, 2012, **159**, A1587–A1590.
- 16 M. Winter and P. Novák, *J. Electrochem. Soc.*, 1998, **145**, L27–L30.
- 17 M. Winter, R. Imhof, F. Joho and P. Novák, *J. Power Sources*, 1999, **81–82**, 818–823.
- 18 H. Buqa, R. I. R. Blyth, P. Golob, B. Evers, I. Schneider, M. V. Santis Alvarez, F. Hofer, F. P. Netzer, M. G. Ramsey, M. Winter and J. O. Besenhard, *Ionics*, 2000, **6**, 172–179.
- 19 H. Buqa, P. Golob, M. Winter and J. O. Besenhard, *J. Power Sources*, 2001, **97–98**, 122–125.
- 20 W. Xia, S. I. Vagin and B. Rieger, *Chem.–Eur. J.*, 2014, **20**, 15499–15504.
- 21 P. Altenbuchner, S. Kissling and B. Rieger, in *Transformation and Utilization of Carbon Dioxide*, ed. B. M. Bhanage and M. Arai, Springer, Berlin Heidelberg, 2014, pp. 163–200.
- 22 Q. Liu, L. Wu, R. Jackstell and M. Beller, *Nat. Commun.*, 2015, **6**, 3091.
- 23 D. R. Lide, *CRC Handbook of Chemistry and Physics*, 85 edn, 2004.



- 24 M. C. Henry and C. R. Yonker, *Anal. Chem.*, 2006, **78**, 3909–3916.
- 25 E. Lack and H. Seidlitz, in *Extraction of Natural Products Using Near-Critical Solvents*, ed. M. B. King and T. R. Bott, Springer, Netherlands, 1993, pp. 101–139.
- 26 E. J. Beckman, *Environ. Sci. Technol.*, 2002, **36**, 347A–353A.
- 27 N. K. Sinha, D. E. Guyer, D. A. Gage and C. T. Lira, *J. Agric. Food Chem.*, 1992, **40**, 842–845.
- 28 J. P. Friedrich, G. R. List and A. J. Heakin, *J. Am. Oil Chem. Soc.*, 1982, **59**, 288–292.
- 29 E. Reverchon and F. Senatore, *J. Agric. Food Chem.*, 1994, **42**, 154–158.
- 30 M. J. van Bommel and A. B. de Haan, *J. Non-Cryst. Solids*, 1995, **186**, 78–82.
- 31 A. C. Pierre and G. M. Pajonk, *Chem. Rev.*, 2002, **102**, 4243–4266.
- 32 D. Guironnet, I. Göttker-Schnetmann and S. Mecking, *Macromolecules*, 2009, **42**, 8157–8164.
- 33 S. Moisan, V. Martinez, P. Weisbecker, F. Cansell, S. Mecking and C. Aymonier, *J. Am. Chem. Soc.*, 2007, **129**, 10602–10606.
- 34 S. E. Sloop, Patent No.: US 7.198.865 B2, 2007.
- 35 M. Winter and J. O. Besenhard, *Chem. Unserer Zeit*, 1999, **33**, 320–332.
- 36 R. Wagner, N. Preschitschek, S. Passerini, J. Leker and M. Winter, *J. Appl. Electrochem.*, 2013, **43**, 481–496.
- 37 K. Tasaki, A. Goldberg and M. Winter, *Electrochim. Acta*, 2011, **56**, 10424–10435.
- 38 H. J. Santner, C. Korepp, M. Winter, J. O. Besenhard and K. C. Möller, *Anal. Bioanal. Chem.*, 2004, **379**, 266–271.
- 39 C. Korepp, H. J. Santner, T. Fujii, M. Ue, J. O. Besenhard, K. C. Möller and M. Winter, *J. Power Sources*, 2006, **158**, 578–582.
- 40 S. Dalavi, M. Xu, B. Ravdel, L. Zhou and B. L. Lucht, *J. Electrochem. Soc.*, 2010, **157**, A1113–A1120.
- 41 M. Winter, *Z. Phys. Chem.*, 2009, **223**, 1395.
- 42 D. Aurbach, M. L. Daroux, P. W. Faguy and E. Yeager, *J. Electrochem. Soc.*, 1987, **134**, 1611–1620.
- 43 E. Peled, D. Golodnitsky, G. Ardel and V. Eshkenazy, *Electrochim. Acta*, 1995, **40**, 2197–2204.
- 44 E. Peled, D. Golodnitsky and G. Ardel, *J. Electrochem. Soc.*, 1997, **144**, L208–L210.
- 45 H. Bryngelsson, M. Stjern Dahl, T. Gustafsson and K. Edström, *J. Power Sources*, 2007, **174**, 970–975.
- 46 P. Verma, P. Maire and P. Novák, *Electrochim. Acta*, 2010, **55**, 6332–6341.
- 47 J. Vetter, P. Novák, M. R. Wagner, C. Veit, K. C. Möller, J. O. Besenhard, M. Winter, M. Wohlfahrt-Mehrens, C. Vogler and A. Hammouche, *J. Power Sources*, 2005, **147**, 269–281.
- 48 H. Yoshida, T. Fukunaga, T. Hazama, M. Terasaki, M. Mizutani and M. Yamachi, *J. Power Sources*, 1997, **68**, 311–315.
- 49 G. E. Blomgren, *J. Power Sources*, 1999, **81–82**, 112–118.
- 50 U. Heider, R. Oesten and M. Jungnitz, *J. Power Sources*, 1999, **81–82**, 119–122.
- 51 X. Zhang, P. N. Ross, R. Kostecki, F. Kong, S. Sloop, J. B. Kerr, K. Striebel, E. J. Cairns and F. McLarnon, *J. Electrochem. Soc.*, 2001, **148**, A463–A470.
- 52 K. Tasaki, K. Kanda, S. Nakamura and M. Ue, *J. Electrochem. Soc.*, 2003, **150**, A1628–A1636.
- 53 C. L. Campion, W. Li and B. L. Lucht, *J. Electrochem. Soc.*, 2005, **152**, A2327–A2334.
- 54 T. Sasaki, T. Abe, Y. Iriyama, M. Inaba and Z. Ogumi, *J. Power Sources*, 2005, **150**, 208–215.
- 55 T. Sasaki, T. Abe, Y. Iriyama, M. Inaba and Z. Ogumi, *J. Electrochem. Soc.*, 2005, **152**, A2046–A2050.
- 56 L. Gireaud, S. Grugeon, S. Pilard, P. Guenot, J.-M. Tarascon and S. Laruelle, *Anal. Chem.*, 2006, **78**, 3688–3698.
- 57 G. Gachot, S. Grugeon, M. Armand, S. Pilard, P. Guenot, J.-M. Tarascon and S. Laruelle, *J. Power Sources*, 2008, **178**, 409–421.
- 58 G. Gachot, P. Ribière, D. Mathiron, S. Grugeon, M. Armand, J.-B. Leriche, S. Pilard and S. Laruelle, *Anal. Chem.*, 2011, **83**, 478–485.
- 59 L. Terborg, S. Nowak, S. Passerini, M. Winter, U. Karst, P. R. Haddad and P. N. Nesterenko, *Anal. Chim. Acta*, 2012, **714**, 121–126.
- 60 L. Terborg, S. Weber, F. Blaske, S. Passerini, M. Winter, U. Karst and S. Nowak, *J. Power Sources*, 2013, **242**, 832–837.
- 61 B. Vortmann, S. Nowak and C. Engelhard, *Anal. Chem.*, 2013, **85**, 3433–3438.
- 62 L. Terborg, S. Weber, S. Passerini, M. Winter, U. Karst and S. Nowak, *J. Power Sources*, 2014, **245**, 836–840.
- 63 M. Grützke, V. Kraft, W. Weber, C. Wendt, A. Friesen, S. Klamor, M. Winter and S. Nowak, *J. Supercrit. Fluids*, 2014, **94**, 216–222.
- 64 V. Kraft, M. Grützke, W. Weber, M. Winter and S. Nowak, *J. Chromatogr. A*, 2014, **1354**, 92–100.
- 65 M. Grützke, V. Kraft, B. Hoffmann, S. Klamor, J. Diekmann, A. Kwade, M. Winter and S. Nowak, *J. Power Sources*, 2015, **273**, 83–88.
- 66 C. Schultz, V. Kraft, M. Pyschik, S. Weber, F. Schappacher, M. Winter and S. Nowak, *J. Electrochem. Soc.*, 2015, **162**, A629–A634.
- 67 W. Weber, V. Kraft, M. Grützke, M. Winter and S. Nowak, *J. Chromatogr. A*, 2015, **1394**, 128–136.
- 68 A. W. Golubkov, D. Fuchs, J. Wagner, H. Wiltse, C. Stangl, G. Fauler, G. Voitic, A. Thaler and V. Hacker, *RSC Adv.*, 2014, **4**, 3633–3642.
- 69 Y. Fu, S. Lu, K. Li, C. Liu, X. Cheng and H. Zhang, *J. Power Sources*, 2015, **273**, 216–222.
- 70 M. Reichert, J. Haetge, D. Berghus, C. Wendt, V. Meier, U. Rodehorst, S. Passerini, F. Schappacher and M. Winter, *ECS Trans.*, 2014, **61**, 87–103.
- 71 D. Aurbach, B. Markovsky, A. Rodkin, M. Cojocaru, E. Levi and H.-J. Kim, *Electrochim. Acta*, 2002, **47**, 1899–1911.
- 72 T. A. Immel, M. Grützke, A.-K. Späte, U. Groth, P. Öhlschlager and T. Huhn, *Chem. Commun.*, 2012, **48**, 5790–5792.
- 73 P. W. Atkins and J. d. Paula, *Kurzlehrbuch Physikalische Chemie*, 2005.



- 74 S. E. Sloop, J. K. Pugh, S. Wang, J. B. Kerr and K. Kinoshita, *Electrochem. Solid-State Lett.*, 2001, **4**, A42–A44.
- 75 S. Castillo, F. Ansart, C. Laberty-Robert and J. Portal, *J. Power Sources*, 2002, **112**, 247–254.
- 76 M. J. Lain, *J. Power Sources*, 2001, **97–98**, 736–738.
- 77 S. Krüger, C. Hanisch, A. Kwade, M. Winter and S. Nowak, *J. Electroanal. Chem.*, 2014, **726**, 91–96.
- 78 Y. Wang, Z.-S. Feng, J.-J. Chen and C. Zhang, *Mater. Lett.*, 2012, **71**, 54.

