



Cite this: *Phys. Chem. Chem. Phys.*,  
2015, 17, 9288

# Thermodynamic and spectroscopic properties of oxygen on silver under an oxygen atmosphere

Travis E. Jones,<sup>\*ab</sup> Tulio C. R. Rocha,<sup>†b</sup> Axel Knop-Gericke,<sup>b</sup> Catherine Stampfl,<sup>c</sup>  
Robert Schlögl<sup>b</sup> and Simone Piccinin<sup>a</sup>

We report on a combined density functional theory and the experimental study of the O<sub>1s</sub> binding energies and X-ray Absorption Near Edge Structure (XANES) of a variety of oxygen species on Ag(111) and Ag(110) surfaces. Our theoretical spectra agree with our measured results for known structures, including the  $p(N \times 1)$  reconstruction of the Ag(110) surface and the  $p(4 \times 4)$  reconstruction of the Ag(111) surface. Combining the O<sub>1s</sub> binding energy and XANES spectra yields unique spectroscopic fingerprints, allowing us to show that unreconstructed atomic oxygen is likely not present on either surface under equilibrium conditions at oxygen chemical potentials typical for ethylene epoxidation. Furthermore, we find no adsorbed or dissolved atomic species whose calculated spectroscopic features agree with those measured for the oxygen species believed to catalyze the partial oxidation of ethylene.

Received 19th January 2015,  
Accepted 3rd March 2015

DOI: 10.1039/c5cp00342c

www.rsc.org/pccp

## 1 Introduction

Elemental silver has the unique ability to catalyze the partial oxidation of ethylene to ethylene oxide (EO). Its efficacy as a catalyst is dependent on temperature and oxygen pressure. EO cannot typically be produced under the ultrahigh vacuum (UHV) conditions employed in many surface science studies.<sup>1–4</sup> To obtain a measurable yield of EO, experiments must instead be performed at 420–550 K under an oxygen atmosphere, or with a silver catalyst that has been pretreated by long exposures to O<sub>2</sub> at these reaction temperatures.<sup>1–6</sup> This *pressure gap* suggests that oxygen must be in a specific chemical environment to catalyze the production of EO and has prompted experimental<sup>1,5,7–15</sup> and theoretical studies<sup>16–19</sup> aimed at elucidating the nature of the oxygen species present on silver under different conditions and the role these species play in catalytic processes.

It has been shown that two types of oxygen are present on silver surfaces under epoxidation conditions at mbar O<sub>2</sub> pressures.<sup>10,11,20</sup> Isotopic labeling and proton-transfer reaction mass spectrometry experiments have revealed that only one type is active in the electrophilic attack of the C–C bond to form EO, though it may also participate in the production of CO<sub>2</sub>. The other type, however, participates solely in ethylene combustion through the nucleophilic activation of C–H bonds.<sup>11,21,22</sup>

To reflect this chemistry the two species are often referred to as electrophilic and nucleophilic oxygen, respectively.

The difference in chemistry between nucleophilic and electrophilic oxygen is apparent in their O<sub>1s</sub> binding energies, which, within an initial state theory of core level shifts, can be interpreted as a difference in charge.<sup>23</sup> The nucleophilic oxygen species is characterized by an O<sub>1s</sub> binding energy of approximately 528 eV, while that of electrophilic oxygen is 530 eV,<sup>10,11,21,22</sup> thereby allowing the two types of oxygen to be distinguished by way of X-ray photoelectron spectroscopy (XPS). Such studies have revealed that, at temperatures relevant for ethylene epoxidation, nucleophilic oxygen forms rapidly when oxygen is dosed under UHV conditions.<sup>7–9,24</sup> The formation of electrophilic oxygen, however, requires long exposures at elevated O<sub>2</sub> pressures or treatment with a reactive gas mixture.<sup>10–13</sup>

The ability to prepare nucleophilic oxygen under UHV has allowed it to be well characterized by surface science techniques, including scanning tunneling microscopy (STM), low energy electron diffraction (LEED), and XPS.<sup>5,7–9</sup> Through judicious applications of these techniques researchers have demonstrated that under UHV conditions the nucleophilic species is oxygen in surface reconstructions whose structures are now known.<sup>5,8,9,25–27</sup> Conversely, the structure of electrophilic oxygen is still debated.

In part, this debate persists due to the fact that, unlike nucleophilic oxygen, electrophilic oxygen cannot be prepared under the controlled conditions afforded by UHV. Experimental investigations of this species have thus required the development and application of methods capable of working at near mbar pressures. In particular studies have focused on *in situ* XPS<sup>28,29</sup> and X-ray Absorption Near Edge Structure (XANES).<sup>30</sup> Researchers have used XPS to demonstrate that silver surfaces

<sup>a</sup> CNR-IOM DEMOCRITOS, c/o SISSA, via Bonomea 265 I-34136, Trieste, Italy.  
E-mail: trjones@fhi-berlin.mpg.de

<sup>b</sup> Department of Inorganic Chemistry, Fritz-Haber-Institut der Max-Planck-Gesellschaft, Faradayweg 4-6, 14195, Berlin, Germany

<sup>c</sup> School of Physics, The University of Sydney, Sydney, New South Wales 2006, Australia

<sup>†</sup> Present address: Brazilian Synchrotron Light Laboratory, Campinas, Brazil.



become covered with electrophilic oxygen under mbar  $O_2$  pressure at epoxidation temperatures,<sup>20,24</sup> while XANES has been employed to offer additional insight into the nature of the electrophilic species.

Bukhtiyarov and coworkers measured the O K-edge absorption spectra of oxygen species attributed to nucleophilic and electrophilic oxygen.<sup>10–13</sup> They suggested that the nucleophilic oxygen they measured is best described as a surface oxide owing to the similarity between its O K-edge spectrum and that of the bulk oxide  $Ag_2O$ . Both spectra are characterized by a large number of states near the absorption threshold that are the result of strong hybridization between O p and Ag sd levels. These experiments also showed that electrophilic oxygen lacks these oxidic features and is instead characterized by states at 10 eV above the absorption threshold formed by the hybridization between O p and Ag sp states. This fact, along with the lack of any known surface reconstruction associated with electrophilic oxygen, leads to the conclusion that the oxygen species responsible for the partial oxidation of ethylene is unreconstructed chemisorbed atomic oxygen.<sup>10–13</sup>

Coincident with these experimental results, *ab initio* atomistic thermodynamic studies on the Ag(111) surface revealed that at the temperatures and  $O_2$  pressures relevant for the partial oxidation of ethylene only two oxygen species are stable, the surface reconstruction ascribed to nucleophilic oxygen and unreconstructed chemisorbed atomic oxygen.<sup>16,17,31,32</sup> (It should be noted that while what is now known to be an incorrect model of the surface reconstruction was used in these studies, there is little difference in energy between the older and revised models, see Appendix A). At higher oxygen chemical potentials thick oxide-like surfaces may become metastable before the bulk oxide  $Ag_2O$  forms.

All of these findings helped spark a range of theoretical investigations into possible reaction mechanisms. Three limiting cases have been considered in detail, the reaction of: (i) unreconstructed chemisorbed atomic oxygen,<sup>33–35</sup> (ii) oxygen in surface reconstructions,<sup>36–38</sup> and (iii) the bulk oxide  $Ag_2O$ .<sup>39–41</sup> The first of these corresponds to the picture of electrophilic oxygen developed through *in situ* XPS and XANES studies,<sup>10–13</sup> as well as the high temperature equilibrium phase predicted in ref. 16 and 17. The second addresses reactions in the well known  $p(4 \times 4)$  phase of the Ag(111)/O surface phase diagram, albeit on an older model of the surface (see Appendix A). The final case could be encountered under equilibrium conditions at low temperatures and can be thought as a limiting case of dissolved oxygen, which has previously been shown to play an important role in EO production.<sup>2,14</sup>

Density Functional Theory (DFT) calculations show that when ethylene reacts with oxygen in the  $p(4 \times 4)$  reconstruction of the Ag(111) surface, assigned to nucleophilic oxygen, the activation energy is 0.08 eV in favor of the total combustion byproduct.<sup>37</sup> Conversely, the barrier to EO production on an Ag(111) surface with unreconstructed chemisorbed atomic oxygen is nearly identical to the barrier associated with the formation of the  $CO_2$  precursor, acetaldehyde (AA),<sup>33–35</sup> which may be altered by the inclusion of subsurface oxygen.<sup>42–44</sup>

When the subsurface oxygen concentration becomes large and the bulk oxide forms, DFT calculations of the minimum energy path for EO production from atomic oxygen adsorbed on  $Ag_2O$ <sup>39–41</sup> reveal that, like unreconstructed atomic oxygen on the metal surface, the reaction barriers to EO production are roughly consistent with values reported from experiment.<sup>45,46</sup> These results support the conclusion that the reconstructed atomic oxygen assigned to nucleophilic oxygen burns ethylene and that unreconstructed chemisorbed atomic oxygen can participate in EO production.

The apparent ability of all types of unreconstructed atomic oxygen to epoxidize ethylene makes it difficult to know which form is the active species present under given experimental conditions. Furthermore, no studies have demonstrated unequivocally which of these species are present on silver surfaces under an oxygen atmosphere. In an effort to answer this question, we have turned to a thorough experimental and computational characterization of the structure and energetics of various oxygen species on the Ag(110) and the Ag(111) surfaces.

We chose to focus on the Ag(110) and the Ag(111) surfaces because they have been reported to have similar selectivity to EO and, presumably, similar active species.<sup>24,47</sup> Our *ab initio* atomistic thermodynamics calculations suggest that oxygen induced surface reconstructions are stable across a wide range of oxygen chemical potentials on both surfaces. Unreconstructed chemisorbed atomic oxygen is not thermodynamically favorable on either surfaces, except at very low coverages that will only be encountered under UHV conditions. At high oxygen chemical potentials we found that oxygen can adsorb on an oxide-like surface that will become metastable under conditions capable of stabilizing the bulk oxide,  $Ag_2O$ .

We go on to verify this picture and the previous assignment of nucleophilic oxygen to oxygen induced surface reconstructions. First we measure the  $O_{1s}$  photoemission and O K-edge absorption spectra of the Ag(110) and the Ag(111) surfaces under *in situ* conditions. Then we compare the measured spectra to those calculated for a wide variety of chemisorbed oxygen species. In agreement with *ab initio* atomistic thermodynamics, the spectroscopic features calculated for oxygen in surface reconstructions match with those obtained from measured spectra, suggesting that the dominant oxygen species are those in surface reconstructions. We found that unreconstructed atomic oxygen is only present during the first few minutes after a clean silver surface is exposed to an  $O_2$  atmosphere. After 15 min of oxygen exposure we observe no evidence of unreconstructed atomic oxygen. Furthermore, no form of chemisorbed atomic oxygen has the XPS or XANES signatures of electrophilic oxygen.

## 2 Experimental details

The *in situ* XPS measurements were performed using the near ambient pressure endstation of the ISSS beamline at the synchrotron radiation facility BESSY II of the Helmholtz-Zentrum Berlin. Details about the system can be found elsewhere.<sup>48</sup> The Ag(111)



and Ag(110) single crystals were polished and oriented to an accuracy of  $<1^\circ$ . The crystals were fixed in a sapphire sample holder using a tungsten wire. Heat was provided by an IR laser from the backside, which was primarily absorbed by a stainless steel plate kept in contact with the crystal. The sample temperature was measured using a K-type thermocouple pressed on the crystal side by a tungsten wire holder and was controlled by adjusting the laser power using a PID feedback loop. Oxygen was dosed using a minican (Linde AG, 4.5 nominal purity) connected to a leak valve. The freshly polished crystals were cleaned by repeating cycles of O<sub>2</sub> treatment at  $10^{-3}$  mbar and 423 K for 20 min, Ar sputtering at 1.5 kV for 20 min and annealing at 673 K in vacuum ( $5 \times 10^{-8}$  mbar) for 5 min. Initially, large amounts of C, Cl, S and Si segregated to the surface after O<sub>2</sub> exposure, but after several cleaning cycles, only Ag and O were observed for exposures shorter than 1–2 h. For longer times, S slowly accumulated on the surface. Hence, we limited the data acquisition time to 2 h, after which the surface was cleaned and exposed to O<sub>2</sub> again.

We selected appropriate photon energies to measure core-level spectra for different elements using photoelectrons with the same kinetic energy of 150 eV, which is equivalent to an inelastic mean free path of 0.5 nm. The binding energy scale for each spectrum was calibrated by the Fermi edge measured with the same photon energy. O K-edge XANES was acquired in the Auger Electron Yield mode by scanning the incident photon energy and setting the electron analyzer to collect Auger electrons with a kinetic energy of 514 eV corresponding to the O KVV transition. The XANES energy scale was calibrated by setting the  $\pi^*$  transition of molecular oxygen in the gas phase to 530.93 eV.<sup>49</sup>

## 2.1 Coverage estimation

The elemental atomic concentration ratio (O/Ag) was calculated by dividing the integrated areas of the O<sub>1s</sub> and Ag<sub>3d</sub> core-levels by the incident photon flux and the atomic photoionization cross sections calculated by Yeh and Lindau<sup>50</sup> for the appropriate energies.

With 1 monolayer (ML) defined as the substitution of all surface atoms on the unreconstructed surfaces, we calculated O/Ag ratios for different structural models by considering the escape depth probability  $e^{-d/\lambda}$  for each atomic layer at distance  $d$  from the surface and taking the inelastic mean free path  $\lambda$  (IMFP) for the appropriate kinetic energy as the average from two experimental studies from the literature.<sup>51,52</sup> In this approach we assume that no scattering event occurs in the adsorbed overlayer. In this way for each adsorption model with different coverages, the atomic ratios can be estimated and compared with the experimental values.

## 3 Computational details

All DFT calculations were performed using the Quantum ESPRESSO (QE) package<sup>53</sup> and ultrasoft pseudopotentials using the exchange and correlation potential developed by Perdew, Burke, and Ernzerhof.<sup>54</sup> In order to compute O K-edge spectra we employed oxygen pseudopotentials with two Gauge Including Projector Augmented Wave (GIPAW) projectors for the  $l = 1$

channel, available from ref. 55 and 56. The silver pseudopotential was taken from the PSLibrary project and is available from ref. 57. All slabs contain five silver layers with approximately 10 Å of vacuum between periodic images. We found that the calculations are well converged using a kinetic energy cutoff of 30 Ry and a  $(12 \times 12)$  Monkhorst–Pack  $k$  point grid for the  $(1 \times 1)$  surface unit cell<sup>58</sup> when Marzari–Vanderbilt cold smearing was used with a smearing parameter of 0.02 Ry.<sup>59</sup> We tested the effect of spin-polarization. In agreement with previous work,<sup>60</sup> at high atomic oxygen coverage the adsorbed oxygen structures become ferromagnetic. However, this has little impact on the computed spectroscopic properties. As such, all calculations reported herein are non-spin-polarized, unless otherwise noted.

### 3.1 Core level binding energies

O<sub>1s</sub> binding energies were calculated using the  $\Delta$ SCF method, which can be used to compute shifts in binding energy that capture both initial and final state effects.<sup>61–65</sup> This approach requires the computation of the energy at both the electronic ground state and the state in the presence of the core hole. The first calculation is simply a geometry relaxation to obtain the total energy of the system at the desired local minimum on the potential energy surface in the absence of a core hole. The second calculation is a fixed geometry self consistent field (SCF) calculation of the same system using a pseudopotential with a core hole on the ionized atom. This calculation is performed at the relaxed geometry due to the fact that the electronic relaxation is much faster than the nuclear relaxation. To maintain charge neutrality the excited core electron is included explicitly in the calculation of the total energy of the system with the core hole, see for instance ref. 66, as opposed to treating the excess electron as uniform background charge. This approach accounts for the core hole screening by the free charge carriers in the metal. Due to the fact that electronic relaxations are included in the presence of the core hole, both initial and final states are accounted for with the  $\Delta$ SCF method.

Within the  $\Delta$ SCF approach the O<sub>1s</sub> binding energies of oxygen on/in the silver surfaces converge quickly with cell size, requiring  $(2 \times 2)$  surfaces to converge the O<sub>1s</sub> binding energy to within  $\pm 0.1$  eV. As such, the O<sub>1s</sub> binding energies of the  $p(N \times 1)$  reconstructions, see Section 4.2, were computed using  $p(N \times 2)$  supercells. The O<sub>1s</sub> binding energies of all other surface species were computed using the minimal unit cell required to reach the desired coverage.

Because the  $\Delta$ SCF method yields differences in energies, a reference state can be used to make direct comparison with experiment more straightforward. For this purpose we chose a  $(4 \times 4 \times 4)$  supercell of bulk Ag<sub>2</sub>O, as there is little doubt about its electronic and atomic structure (for details see Appendix B). The resulting O<sub>1s</sub> binding energy of a system relative to the reference is then:

$$\Delta O_{1s} = [E_f - E_0] - [E_f^{Ag_2O} - E_0^{Ag_2O}], \quad (1)$$

where  $E_f$  and  $E_0$  are the energies of the system of interest with and without a core hole on the probed oxygen atom, respectively,



and  $E_f^{\text{Ag}_2\text{O}}$  and  $E_0^{\text{Ag}_2\text{O}}$  are the energies of the oxide reference, with and without an  $\text{O}_{1s}$  core hole. The  $\Delta\text{O}_{1s}$  can be converted to an absolute binding energy by adding the experimentally determined  $\text{O}_{1s}$  of the reference compound:

$$\text{O}_{1s} = \Delta\text{O}_{1s} + \text{O}_{1s}^{\text{Ag}_2\text{O,exp}}, \quad (2)$$

where  $\text{O}_{1s}^{\text{Ag}_2\text{O,exp}}$  is 529.2 eV.<sup>67</sup> It is important to note however that changing the reference will only shift the reported values rigidly.

To ensure that this approach yields satisfactory results we computed the  $\text{O}_{1s}$  binding energies of a  $(4 \times 2 \times 4)$  super cell of  $\text{Ag}_2\text{CO}_3$ , where the lattice parameters and ionic positions were taken from experiment,<sup>68</sup> and 1/4 ML  $\text{H}_2\text{O}$  was adsorbed on silver. We found the values to be 530.7 and 533.0 eV for  $\text{Ag}_2\text{CO}_3$  and  $\text{H}_2\text{O}$ , respectively, as compared to the experimental results of 530.8<sup>69</sup> and 533.3 eV.<sup>70</sup> These errors are consistent with the 0.1–0.3 eV error previously found for oxygen and carbonates on silver surfaces.<sup>71,72</sup> Thus, we expect our calculated  $\text{O}_{1s}$  binding energies to be within our 0.4 eV total instrument resolution.

### 3.2 O K-edge spectra

To first order XANES probes the unoccupied partial density of states on the excited atom that are allowed within dipole selection rules. In a single particle approach the X-ray Absorption cross section for dipole transitions can be expressed using Fermi's Golden rule:<sup>73–76</sup>

$$\sigma(\epsilon) = 4\pi^2 \alpha \hbar \omega \sum_{f,i} |\langle \psi_f | \hat{\mathcal{D}} | \psi_i \rangle|^2 \delta(E_f - E_i - \hbar\omega), \quad (3)$$

where  $\alpha$  is the fine structure constant,  $\hbar\omega$  is the incident photon energy and  $\langle \psi_f | \hat{\mathcal{D}} | \psi_i \rangle$  gives the transition amplitude between the initial core level  $|\psi_i\rangle$  with energy  $E_i$  and the final (empty) state  $|\psi_f\rangle$  with energy  $E_f$ . The dipole transition operator that couples the core and unoccupied states is given by:

$$\hat{\mathcal{D}} = \epsilon \cdot \mathbf{r}, \quad (4)$$

$\mathbf{r}$  is the electron coordinate and  $\epsilon$  is the polarization vector of the incident X-rays:<sup>73</sup>

$$\epsilon = \begin{pmatrix} \sin \theta \cos \phi \\ \sin \theta \sin \phi \\ \cos \theta \end{pmatrix}, \quad (5)$$

where  $\theta$  defines the angle between the  $\mathbf{E}$  vector of the incident beam and the surface normal, and  $\phi$  is the angle between the  $x$ -axis in the plane of the surface and the  $\mathbf{E}$  vector. The absorption cross section can then be written as:

$$\sigma(\epsilon) = \sum_{ij} \epsilon_i \epsilon_j \sigma^{ij}. \quad (6)$$

While the synchrotron radiation used in our experiments was linearly polarized in the plane of the storage ring, we averaged over  $\phi$  due the fact that the in-plane orientation of the samples was unknown. This assumption does not change the qualitative features of the computed O K-edge spectra,

see Appendix C, but allows us to write the angular dependence of the cross section as:

$$\sigma(\epsilon) = \left( \frac{\sigma^{11} + \sigma^{22}}{2} \right) \sin^2 \theta + \sigma^{33} \cos^2 \theta. \quad (7)$$

For all surface and subsurface species we show spectra with  $\theta = 35^\circ$  in order to match our experimental conditions, while for bulk species we report the powder spectra,  $\text{tr}(\sigma)$ .

The elements of  $\sigma^{ij}$  were calculated using the continued fraction approach and ultrasoft pseudopotentials by way of the XSpetra package.<sup>74–76</sup> Within this approach a single atom in the computational cell is treated as the absorbing atom, which, depending on the importance of the core hole effect, can be modeled with or without a core hole.<sup>76,77</sup> For the cases reported herein we report results using a full core hole unless otherwise noted, that is, results obtained by performing a SCF calculation on systems with a pseudopotential containing a core hole on the absorbing atom and the same  $k$  point mesh as was used in the SCF calculations. As in the case of the  $\Delta\text{SCF}$  calculations, the excited core electron is included self consistently, unless otherwise noted (see Appendix D). To avoid interactions between neighboring periodic images, calculations were performed on  $(4 \times 4)$  surfaces, except for the  $\text{Ag}(110)$   $c(6 \times 2)$  reconstruction (see Section 4), for which we took a  $(6 \times 4)$  surface, and the  $\text{Ag}(111)$   $(\sqrt{3} \times \sqrt{3})R30^\circ$  surface substitutional structure (see Section 5.5), where we used a  $(2\sqrt{3} \times 2\sqrt{3})R30^\circ$  surface. For more details on size convergence see Appendix B.

Because the spectra are calculated using stationary states a broadening factor must be introduced to account for the excited-state lifetime.<sup>76,78–80</sup> This was accomplished by convoluting the raw spectrum with a Lorentzian that has an energy dependent linewidth:

$$\Gamma_f(E) = \Gamma_{\text{core}} + \gamma(E). \quad (8)$$

The natural line width of oxygen, 0.14 eV,<sup>81</sup> is used for  $\Gamma_{\text{core}}$ . A variety of broadening factors have been proposed to account for the monotonic increase of  $\gamma(E)$  with energy.<sup>76,78</sup> We chose to treat it as simple as possible, as a linear function  $\gamma(E) = 0.1(E - E_{\text{Fermi}})$ . While this approach is purely empirical, it has been shown to be reasonable for many systems.<sup>78,79,82</sup>

In every case the occupied states are removed and the Fermi energy of the broadened spectrum is set to the computed  $\text{O}_{1s}$  binding energy associated with the absorbing atom to facilitate comparison with experiment. In the cases of systems with multiple absorbing atoms, for instance in Section 5.4, the spectrum of each symmetry unique atom is prepared separately to ensure the correct energy of alignment of the individual spectra of each absorber. These spectra are then summed to yield the total spectrum. The final theoretical spectra are always normalized to the experimental spectrum to which they are compared.

### 3.3 *Ab initio* thermodynamics

The surface free energies are calculated using *ab initio* atomistic thermodynamics<sup>16,17,83,84</sup> which has previously been applied to



the Ag(111)–O system.<sup>16</sup> This approach allows us to determine the thermodynamic stability of the different oxygen species by considering the surface to be in thermodynamic equilibrium with a reservoir of O<sub>2</sub>. If the vibrational and configurational contributions to the free energy are ignored, the surface free energy can be written as:

$$\gamma(T, p) \approx \frac{1}{A}(E_{\text{total}} - E_{\text{slab}} - N_{\text{Ag}}\mu_{\text{Ag}} - N_{\text{O}}\mu_{\text{O}}), \quad (9)$$

where  $E_{\text{slab}}$  is the total energy of the clean silver slab,  $N_{\text{Ag}}$  and  $N_{\text{O}}$  are the number of silver and oxygen adatoms,  $A$  is the surface area, and  $\mu_{\text{Ag}}$  and  $\mu_{\text{O}}$  are the silver and oxygen chemical potentials.

Under the assumption that  $\mu_{\text{Ag}}$  is the total energy of a silver atom in the bulk, the temperature and pressure dependence are contained entirely in the oxygen chemical potential, which can be written as:

$$\mu_{\text{O}}(T, p) = \frac{1}{2} \left[ E_{\text{O}_2} + \tilde{\mu}_{\text{O}_2}(T, p_0) + k_{\text{B}}T \ln \left( \frac{p_{\text{O}_2}}{p_0} \right) \right]. \quad (10)$$

$E_{\text{O}_2}$  is the total energy of the isolated oxygen molecule and  $\tilde{\mu}_{\text{O}_2}(T, p_0)$  is the translational, rotational, and vibrational contribution to the free energy. The latter we took from the NIST JANAF thermochemical tables,<sup>85</sup> though it could be calculated. For the former, we employed two separate approaches: (i) we computed the total energy of the O<sub>2</sub> molecule at the  $\Gamma$  point using a box whose side lengths were 40 Bohr; (ii) because modern GGAs, including PBE, overbind the O<sub>2</sub> molecule by nearly 1 eV, we computed the energy of a single oxygen atom using a cubic box with side lengths of 40 Bohr and took  $E_{\text{O}_2}$  to be twice the atom energy plus the experimental O<sub>2</sub> binding energy. We will refer to these as the full DFT and mixed reference states. The full DFT results are expected to excessively favor gas phase O<sub>2</sub>, hence low oxygen coverage, whereas using the experimental O<sub>2</sub> binding energy will lead to an over stabilization of adsorbed O.

## 4 Ag(110) surface

We begin our study on the properties of adsorbed oxygen by examining oxygen on the Ag(110) surface.

It is well known that a series of  $p(N \times 1)$ , and a  $c(6 \times 2)$ , surface reconstructions form on the Ag(110) surface under an oxygen atmosphere.<sup>8</sup> The  $p(N \times 1)$  added row reconstructions on the Ag(110), where  $N$  ranges from 2–8, are the oldest known reconstructions in the Ag–O system due to the ease with which they can be produced.<sup>86</sup> The relatively high sticking coefficient of oxygen on the Ag(110) surface allows the reconstructions to be made under clean conditions and low O<sub>2</sub> dosing.<sup>8</sup> In vacuum, the surface saturates with an overlayer that gives rise to a  $p(2 \times 1)$  low energy electron diffraction (LEED) pattern, whose structure corresponds to that shown in Fig. 1A, with oxygen and silver forming added rows running in the [001] direction on the (110) surface.<sup>87,88</sup> These rows can be seen to have the linear O–Ag–O bonding motif seen in the bulk oxide, Ag<sub>2</sub>O. Under lower oxygen chemical potential other  $p(N \times 1)$  patterns emerge, which correspond to lower density added row

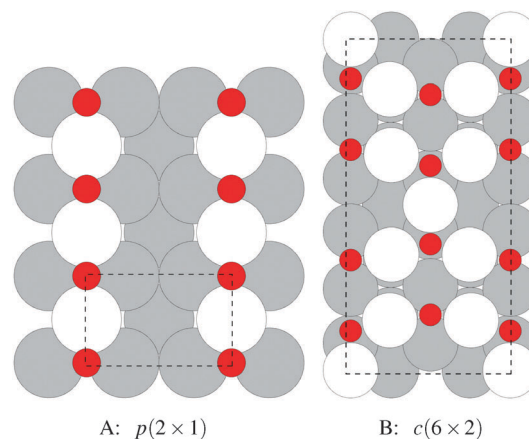


Fig. 1 The atomic structure of the  $p(2 \times 1)$  added row reconstruction (A) and the  $c(6 \times 2)$  added strand (B) on the Ag(110) surface. The silver atoms incorporated into the reconstructions are shaded white and the others grey. Oxygen atoms are shown as small red circles. The unit cells are shown by way of the black dashed lines.

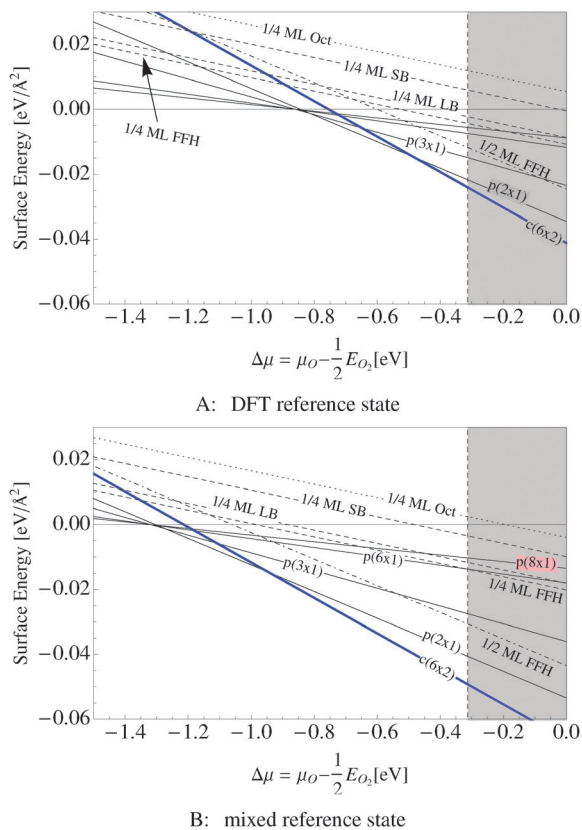
structures, with  $N$  reaching a maximum of 8.<sup>89–91</sup> At higher oxygen chemical potential, a  $c(6 \times 2)$  LEED pattern also emerged.<sup>8</sup> This added strand structure,<sup>92,93</sup> Fig. 1B, is like that found in the Cu–O system.<sup>94–97</sup>

### 4.1 Surface free energies

Our surface free energy calculations are in good agreement with these experimental observations. Fig. 2A shows the surface free energy of a variety of phases as a function of  $\Delta\mu_{\text{O}}$  defined as  $\mu_{\text{O}} - \frac{1}{2}E_{\text{O}_2}$ , where  $E_{\text{O}_2}$  was taken as the total energy of the isolated O<sub>2</sub> molecule calculated by way of DFT. The grey shaded box represents the range of chemical potential over which the bulk oxide, Ag<sub>2</sub>O, is stable, *i.e.*, when  $\Delta\mu_{\text{O}}$  is greater than the oxide's heat of formation. The dashed vertical line shows the experimental heat of formation of Ag<sub>2</sub>O. The surface free energies of the  $p(N \times 1)$  added row reconstructions are indicated by way of solid black lines, and the  $c(6 \times 2)$  phase is shown with a thick blue line. The dotted line indicates the surface free energy of 1/4 ML atomic oxygen dissolved in the octahedral holes. The surface free energies of 1/4 monolayer (ML) atomic oxygen chemisorbed on the short bridge (SB), long bridge (LB), and four-fold hollow (FFH) sites are shown by way of the black dashed lines, the atomic structures of which are shown in Fig. 3. We also considered a 1/2 ML coverage of oxygen on the FFH sites, which adopts the linear O–Ag–O bonding motif shown in Fig. 3D. The surface free energy of this state is shown in Fig. 2 by way of the dashed-dotted line.

Fig. 2B shows the same systems as in Fig. 2A but with the mixed O<sub>2</sub> reference state, that is defined as twice the energy of the isolated oxygen atom calculated by way of the DFT atom plus the experimental O<sub>2</sub> binding energy. Note that changing the O<sub>2</sub> reference state primarily serves to shift the surface free energies rigidly; it does not appreciably alter the relative stability of the phases. As such, for the remainder of this discussion we will focus on Fig. 2A.

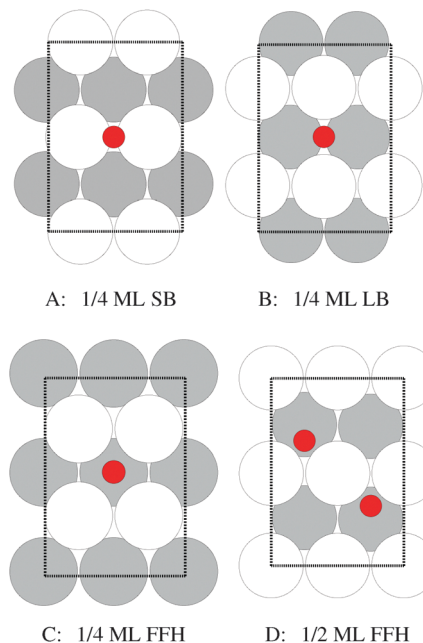




**Fig. 2** Surface free energies calculated for various oxygen species on the Ag(110) surface. The vertical dashed line indicates the experimental  $\text{Ag}_2\text{O}$  heat of formation. The solid lines represent the free energies of the surface reconstructions. The dashed lines show the free energy of adsorbed atomic oxygen, and the dotted line shows the free energy of subsurface atomic oxygen. The top panel (A) shows the results computed using the total energy of the isolated  $\text{O}_2$  molecule calculated by way of DFT as the  $\text{O}_2$  reference state. The results obtained using the calculated energy of the isolated oxygen atom plus the experimental binding energy of  $\text{O}_2$  as the  $\text{O}_2$  reference state are shown in the bottom panel (B).

When the oxygen chemical potential is low, that is, when  $\Delta\mu_{\text{O}} < -0.85$  eV, all of the Ag–O structures have a positive surface free energy and the clean surface is thermodynamically stable. As the oxygen chemical potential increases, the  $p(N \times 1)$  phases become favored with  $N$  rapidly decreasing to a limiting value of two. Upon further increase of  $\Delta\mu_{\text{O}}$  the  $c(6 \times 2)$  becomes favored before the bulk oxide.

It is interesting to note that unreconstructed atomic oxygen is never the thermodynamically favored phase, as evidenced by the fact that surface reconstructions always have a lower free energy, see Fig. 2. At 1/4 ML coverage the surface free energy of dissolved oxygen is positive across the entire range of oxygen chemical potential in Fig. 2A. Oxygen on the SB sites is slightly more stable, followed by the LB and FFH, which are comparable in energy at 1/4 ML coverage. When the O–Ag–O motif is adopted at 1/2 ML oxygen coverage on the FFH sites, the adsorption energy increases markedly from that found at 1/4 ML coverage. This high coverage is thermodynamically favorable over the other unreconstructed atomic oxygen species. However, the oxygen induced reconstructions remain the most stable



**Fig. 3** Atomic structure of 1/4 ML oxygen on the short bridge (SB) (A), long bridge (LB) (B), and four-fold hollow (FFH) sites (C), along with 1/2 ML oxygen on the four-fold hollow sites (D). The coloring is the same as Fig. 1.

phase at oxygen chemical potentials below that required to form  $\text{Ag}_2\text{O}$ . Though thermodynamics suggests that unreconstructed chemisorbed oxygen is unlikely to be present under equilibrium conditions at values of  $\Delta\mu_{\text{O}}$  relevant for ethylene epoxidation, such an unreconstructed species may be present if, as has been suggested on the basis of microkinetic modeling,<sup>98</sup> the formation of the thermodynamically favored reconstructions is limited by kinetics, not thermodynamics. The presence of chemisorbed oxygen can be determined experimentally by the spectroscopic measurement of the silver surface, in particular the  $\text{O}_{1s}$  binding energies.

#### 4.2 $\text{O}_{1s}$ binding energies

UHV measurements of the  $\text{O}_{1s}$  binding energies have revealed that the  $p(N \times 1)$  and  $c(6 \times 2)$  surface reconstructions of the Ag(110) are indistinguishable, appearing experimentally at 528.3–528.6 eV, although the full width at half maximum (FWHM) increases from 1.7 eV to 2.0 eV when the  $c(6 \times 2)$  phase is present.<sup>8,99</sup> Our calculated  $\text{O}_{1s}$  binding energies are in good agreement with these measurements (see Table 1). Those calculated for the  $p(N \times 1)$  reconstructions, where  $N$  ranges from 2 to 8, appear at 528.5 eV, whereas the two symmetry unique oxygen atoms in the  $c(6 \times 2)$  phase have calculated  $\text{O}_{1s}$  binding energies of 528.4 eV and 528.6 eV, with the linearly coordinated oxygen appearing at 528.4 eV and three-fold coordinated oxygen at 528.6 eV.

Our calculated  $\text{O}_{1s}$  binding energies support the conclusion drawn from *ab initio* thermodynamics that unreconstructed chemisorbed atomic oxygen on the SB and LB sites is likely not present under UHV conditions but cannot be used to exclude the presence of oxygen adsorbed on the FFH sites or



**Table 1** Table of calculated  $O_{1s}$  binding energies for adsorbed and dissolved atomic oxygen. The binding energies are in eV and have been shifted relative to an  $O_{1s}$   $Ag_2O$  of 529.2 eV. Bulk dissolved oxygen was modeled by placing oxygen in the octahedral hole under the third silver layer in a seven silver layered slab

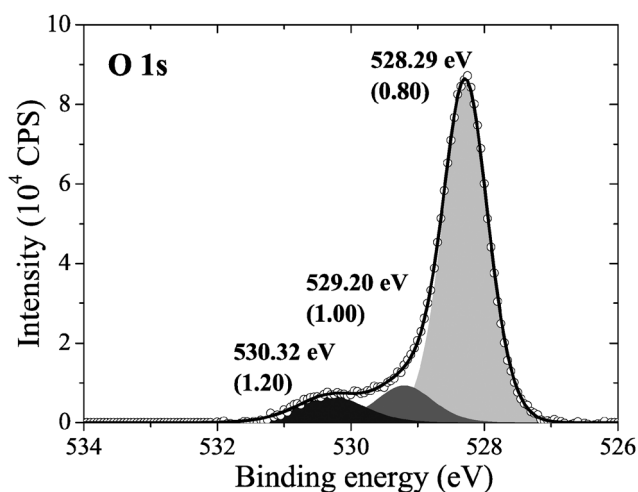
Species	$O_{1s}$ binding energy
<b>Surface reconstructions</b>	
$p(N \times 1)/(110)$	528.5
$c(6 \times 2)/(110)$	528.4–528.6
$p(4 \times 4)/(111)$	528.1–528.2
<b>Adsorbed O(110)</b>	
1/4 ML SB	527.0
1/4 ML LB	527.6
1/4 ML FFH	527.8
1/2 ML FFH	528.2
<b>Adsorbed oxygen(111)</b>	
1/16 ML	527.6
1/4 ML	527.7
1/3 ML	527.5
1/2 ML	527.1
<b>Subsurface oxygen(111)</b>	
1/16 ML (oct)	528.6
1/4 ML (oct)	528.7
1/2 ML (oct)	528.3
1/4 ML (type I)	528.6
1/4 ML (type II)	528.2
Bulk dissolved	528.5
<b>Oxide-like layers (111)</b>	
1/2 ML	528.6, 529.1
3/4 ML	528.9, 529.2, 528.2
1 ML	528.9, 529.1, 529.1, 529.1
<b>Oxygen on <math>Ag_2O(001)</math> surface</b>	
Adsorbed	526.8
Subsurface	528.9
<b>Defect sites</b>	
$(\sqrt{3} \times \sqrt{3})$ surface substitutional	527.9
Bulk substitutional	527.9
$\Sigma 3$ grain boundary	528.3–528.5
$\Sigma 5$ grain boundary	528.1
(110) step edge	527.8

dissolved oxygen (see Table 1). At 1/4 ML coverage the weakly adsorbed oxygen on the SB sites has an  $O_{1s}$  binding energy of 527.0 eV, while the more strongly bound oxygen on the LB sites has an  $O_{1s}$  binding energy of 527.6 eV. The further increase in adsorption energy associated with going to the FFH sites is mirrored by an increase of the  $O_{1s}$  binding energy to 527.8 eV at 1/4 ML coverage and 528.2 eV at 1/2 ML coverage. The calculated  $O_{1s}$  binding energies of dissolved oxygen are 528.5 and 528.6 eV in the subsurface and bulk, respectively, where the bulk dissolved species was modeled as a single oxygen atom in an octahedral hole of a 32 silver atom supercell. While these findings suggest it may be difficult to discriminate between oxygen adsorbed on the FFH sites, dissolved oxygen, and oxygen in the  $p(N \times 1)$  and  $c(6 \times 2)$  surface reconstructions of the  $Ag(110)$  using the  $O_{1s}$  spectrum alone, they indicate that weakly bound chemisorbed oxygen, that on the SB and LB sites is not present under UHV conditions. However, a weakly bound atomic oxygen may be present under higher  $O_2$  pressures.

To test this possibility we performed experiments on an  $Ag(110)$  single crystal. A clean  $Ag(110)$  surface was exposed to  $10^{-4}$  mbar  $O_2$  pressure for 22 minutes at 423 K. This temperature and pressure correspond to  $\Delta\mu_{O_2} \approx -0.7$  eV. The inspection of Fig. 2 reveals that under these conditions either the  $p(2 \times 1)$  or the  $c(6 \times 2)$  reconstruction is predicted to occur, depending on the choice of  $O_2$  reference state.

Consistent with this prediction, when we measured the *in situ* XPS we found that the surface was covered primarily in an oxygen species with an  $O_{1s}$  binding energy of 528.3 eV, see Fig. 4, along with minor contributions from oxygen species with  $O_{1s}$  binding energies of 529.2 eV and 530.3 eV. Note that the measured  $O_{1s}$  binding energy of 528.3 eV could also be attributed to dissolved oxygen or 1/2 ML oxygen on the FFH sites, as their calculated  $O_{1s}$  binding energies are within the 0.3 eV error we found for the  $\Delta$ SCF approach. However, the calculated  $O_{1s}$  binding energies of oxygen on the LB and SB sites are well below the measured value. As such, atomic oxygen on the LB and SB sites cannot be assigned to the peak appearing at 528.3 eV in the measured  $O_{1s}$  spectrum. Furthermore, as there is no asymmetry or shoulder on the lower energy side of the 528.3 eV peak in the  $O_{1s}$  spectrum, we are confident that atomic oxygen is not present on the LB or SB sites after 22 minutes at 423 K under  $10^{-4}$  mbar  $O_2$  pressure.

To help identify the species that are present we can turn to the experimental O/Ag ratio, which shows that the oxygen coverage of the species appearing at 528.3 eV in the  $O_{1s}$  spectrum is approximately 0.45 ML. These data demonstrate that the lower density  $p(N \times 1)$  added rows were not the dominant species on the surface, as they have lower coverages. However, the coverage cannot be used to unambiguously assign the measured oxygen species to either surface reconstruction, or even 1/2 ML unreconstructed chemisorbed oxygen. Instead, because the oxygen coverage of the species with  $O_{1s}$  binding energies consistent with the measured spectrum are at or above 1/2 ML, the surface could be almost entirely covered in the  $p(2 \times 1)$  reconstruction, which has 1/2 ML coverage, 1/2 ML of



**Fig. 4** The measured  $O_{1s}$  spectrum of an  $Ag(110)$  surface under  $10^{-4}$  mbar  $O_2$  pressure for 22 minutes at 423 K.



unreconstructed oxygen, or islands of the  $c(6 \times 2)$  reconstruction could be present.

### 4.3 O K-edge spectra

In an effort to distinguish between the possible oxygen structures present under *in situ* conditions we measured the *in situ* O K-edge absorption spectrum of the oxygen treated Ag(110) crystals in the Auger Electron Yield (AEY).<sup>100</sup> Inspection of the measured O K-edge spectrum, the black dots in Fig. 5, reveals that, like in the bulk oxide, Ag<sub>2</sub>O, the Ag–O bonding is not purely ionic. Instead, hybridization between the O 2p and Ag levels leaves the O 2p states partially unoccupied. As a result, there are two strong features above the threshold in the O K-edge spectrum due to O 1s → 2p transitions.

Comparing the measured O K-edge spectrum with that calculated for the  $p(2 \times 1)$  reconstruction of the Ag(110) surface suggests that the added-row reconstructed phase was present under the experimental conditions. The calculated spectrum is shown in curve b of Fig. 5 using a solid line. Note that the vertical offset from the measured spectrum is only to aid in distinguishing the two spectra. Both absorption spectra can be seen to have a narrow maximum centered at approximately 529 eV and a second feature at 534 eV, similar to the O K-edge spectrum of the  $p(2 \times 1)$  added row reconstruction on the Cu(110) surface.<sup>101</sup> We find that, like in Ag<sub>2</sub>O, the near threshold absorption is due to O p states mixing with Ag sd levels, whereas the high energy feature is due to the mixing between O p and Ag sp states, as previously suggested.<sup>10,102</sup> However, unlike the bulk oxide, Ag<sub>2</sub>O, there is substantially more O p and Ag sp mixing, giving rise to a more intense broad high energy peak for oxygen in the  $p(2 \times 1)$  surface reconstruction than in Ag<sub>2</sub>O (see Appendix B for the Ag<sub>2</sub>O XAS). In the calculated spectrum this absorption can be seen to be composed of two separate features, whereas only one absorption maximum is seen for the 534 eV feature in the experimental spectrum. The appearance of only a single peak in the experimental spectrum

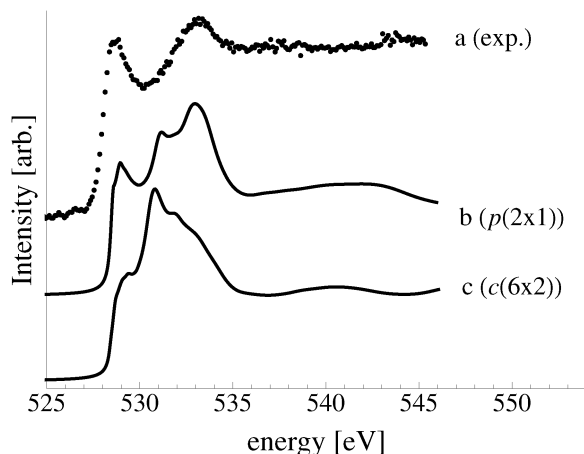


Fig. 5 Waterfall plot of the measured O K-edge spectrum of the Ag(110) surface exposed to  $10^{-4}$  mbar O<sub>2</sub> pressure for 22 minutes at 423 K (a). Calculated O K-edge spectra of the  $p(2 \times 1)$  added row (b) and of the  $c(6 \times 2)$  added strand reconstructions (c) on the Ag(110) surface.

is likely due to vibrational, or instrumental, broadening, which we have neglected, as noted in Section 3.<sup>103,104</sup> The two absorptions appear in the theoretical spectrum because of differences in mixing between the Ag states and the in and out of plane O 2p states, highlighting the O K-edge spectrum's sensitivity to the local environment around oxygen.

The sensitivity of the O K-edge spectrum to the local environment of the oxygen also allows us to confirm that neither the  $c(6 \times 2)$  reconstruction nor the unreconstructed adsorbed atomic oxygen were present during the experiment. Returning to Fig. 5 we can see that the O K-edge spectrum calculated for the  $c(6 \times 2)$  phase, curve c, is inconsistent with the measured spectrum and is characterized by a broad intense primary peak that is aligned with a minima in the measured spectrum. The various forms of unreconstructed chemisorbed atomic oxygen are shown in Fig. 6, where the experimental spectrum has been reproduced as curve (a) to facilitate comparison. At 1/4 ML coverage on the SB sites (curve b) a strong feature with a high binding energy shoulder can be seen at approximately 528 eV, which is 1 eV below the leading edge of the measured spectrum. Two additional higher energy features also appear, one at 530 eV and the second at 534 eV. The more strongly adsorbed species, 1/4 ML oxygen on the LB sites, shown in curve c retains the features seen for the SB species. However, the intensity of the leading edge is diminished, exposing a new peak at 529 eV. This trend continues with the more strongly adsorbed 1/4 ML FFH species, Fig. 6 curve d, and while further changes can be seen when the coverage is increased to 1/2 ML on the FFH sites, in all cases the calculated O K-edge spectra are inconsistent with the measured spectrum. Thus, by combining O K-edge and XPS spectra we confirm the

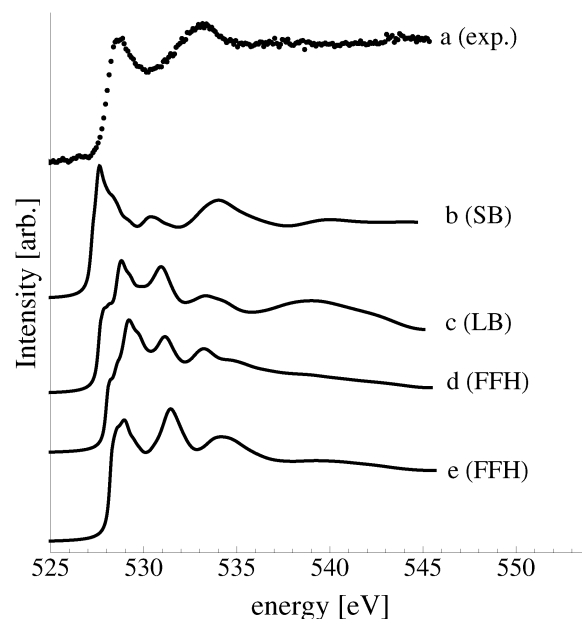


Fig. 6 The measured O K-edge spectrum of the Ag(110) surface exposed to  $10^{-4}$  mbar O<sub>2</sub> pressure for 22 minutes at 423 K (a). The calculated O K-edge spectra of 1/4 ML oxygen on the SB (b), LB (c), and FFH (d) sites of the Ag(110) surface, along with 1/2 ML oxygen on the FFH sites (e).





*ab initio* thermodynamics prediction that unreconstructed adsorbed atomic oxygen is not present.

We considered that subsurface or bulk dissolved atomic oxygen may be present. Though the subsurface species is predicted to be thermodynamically unstable relative to the clean surface under our experimental conditions, a bulk dissolved species could be stabilized by configurational entropy, which we have ignored in the creation of the surface phase diagram. The subsurface species was modeled by placing 1/4 ML oxygen in the octahedral holes in the first subsurface layer under the Ag(110) surface. The bulk species was modeled by placing a single oxygen atom in an octahedral hole of a 32 atom super cell of bulk silver,  $(2 \times 2 \times 2)$  crystallographic unit cells. The calculated  $O_{1s}$  binding energies of the subsurface and bulk dissolved species, 528.4–528.5 eV, agree with the previous assignment of subsurface oxygen in the Ag(110)–O system to an  $O_{1s}$  feature at 528.5 eV.<sup>8</sup> The calculated values are also close to the measured  $O_{1s}$  528.3 eV. Thus, they cannot be used to confirm the presence or absence of dissolved oxygen in our experiment. We can, however, turn again to XANES.

The calculated O K-edge spectra support the conclusion that subsurface oxygen is not present under our experimental conditions, though a low concentration of bulk dissolved oxygen may be. Fig. 7 shows the measured O K-edge spectrum, curve a, along with that calculated for atomic oxygen in a subsurface octahedral hole of the (110) surface, curve b, and bulk dissolved atomic oxygen, curve c. The primary absorption of the subsurface species can be seen to appear at 530 eV, in line with a minimum in the measured spectrum. The spectrum of bulk dissolved oxygen is characterized by two primary absorptions, one at approximately 529 eV and the second at 534 eV, in qualitative agreement with the absorptions in the measured spectrum. The low energy peak in the calculated spectrum is, however, composed of a doublet and singlet and it is substantially wider than what is observed experimentally, suggesting that, at most, a low concentration of bulk dissolved oxygen is present.

It is clear from Fig. 7 that the electronic structures of bulk dissolved and subsurface oxygen are different. This difference

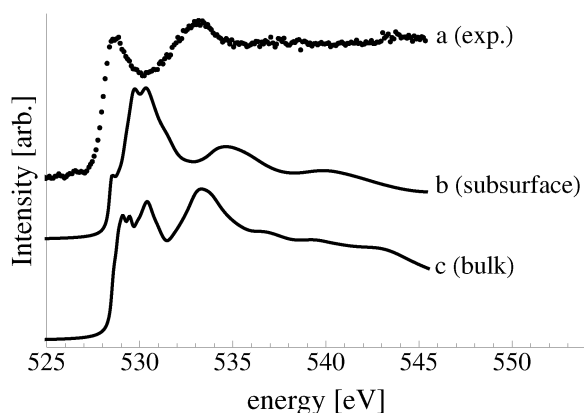


Fig. 7 The measured O K-edge spectrum of the Ag(110) surface exposed to  $10^{-4}$  mbar  $O_2$  pressure for 22 minutes at 423 K (a). The calculated O K-edge spectra of 1/4 ML oxygen in the octahedral subsurface sites under the Ag(110) surface (b) and in the bulk (c).

raises the natural question of how deep below the surface atomic oxygen must be before its electronic structure is like that of bulk dissolved oxygen. We found that when the oxygen is in the third subsurface layer under an Ag(111) surface its O K-edge spectrum is nearly identical to that of bulk dissolved oxygen. Thus, such “bulk” species could be observed in XPS and AEY XANES measurements, which are only sensitive to the top few layers of the silver surface.

#### 4.4 Phase diagram

Through XPS alone we are unable to distinguish between a number of oxygen species on the Ag(110) surface. Through the combination of XANES and XPS, however, we are able to show that when an Ag(110) surface is placed under  $10^{-4}$  mbar  $O_2$  pressure at 423 K the surface is covered with an oxygen species consistent with oxygen in a  $p(2 \times 1)$  reconstruction, as predicted by the full DFT *ab initio* atomistic thermodynamics. Because the  $c(6 \times 2)$  phase is not present we can confirm our earlier assertion that using the experimental  $O_2$  binding energy as part of the  $O_2$  reference state in the *ab initio* atomistic thermodynamics calculations leads to an overestimation of the stability of adsorbed oxygen phases on the Ag(110) surface. The better performance of the full DFT results is likely due to the fact that the oxygen adsorption energies are also overestimated, though perhaps to a lesser degree than the  $O_2$  binding energy.<sup>105</sup> As a result, the full DFT approach offers some error cancellation and more reliable phase diagrams than using the mixed  $O_2$  reference state.

With a suitable reference state determined we can now develop the  $(P, T)$  phase diagram of the Ag(110)–O system to facilitate comparison with experiment (see Fig. 8). This  $(P, T)$  phase diagram can also be used to estimate error bars by comparing to the known bulk dissociation pressure of  $Ag_2O$ ,<sup>16</sup> which is the  $O_2$  pressure, at a given temperature, required for the bulk metal and bulk oxide to be in thermodynamic

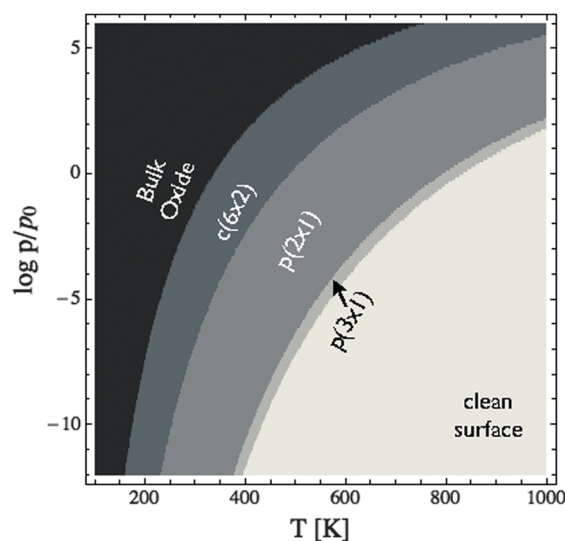


Fig. 8  $(P, T)$  phase diagram of the Ag(110)–O system calculated using the total energy of the isolated  $O_2$  molecule calculated by way of DFT as the  $O_2$  reference state.



equilibrium.<sup>106</sup> The inspection of Fig. 8 reveals that at 460 K the bulk oxide is predicted to become thermodynamically unfavorable at pressures below approximately  $10^3$  bar, as compared to approximately 1 bar experimentally.<sup>107</sup> At 820 K the experimental dissociation pressure is approximately  $10^3$  bar, and though it is not shown in the figure, the predicted pressure is  $10^{6.5}$  bar, leading to a difference of  $10^{3.5}$  bar, whereas at 320 K the predicted dissociation pressure is only  $10^{1.5}$  bar above experimental results.<sup>106</sup> This temperature dependence of the difference in dissociation pressure is likely due to the fact that the entropic contributions that have been neglected when creating Fig. 8 increase at higher temperature. From this comparison we can conclude that the equilibrium phase diagram calculated using the full DFT results likely underestimate the thermal stability of the surface reconstructions at the temperatures used in this study by approximately  $10^3$  bar, in agreement with the pressure error found in ref. 16.

To further verify the predicted error in the *ab initio* ( $P, T$ ) phase diagram of the Ag(110)–O system we performed experiments wherein the Ag(110) surface was exposed to  $10^{-2}$  mbar  $O_2$  pressure at 423 K. Like under  $10^{-4}$  mbar  $O_2$  pressure, exposure to the higher pressure results in the appearance of a feature at 528.3 eV in the  $O_{1s}$  spectrum. However, under the higher pressure conditions, the oxygen coverage increases to approximately 0.67 ML, as determined by the O/Ag ratio, coincident with the  $c(6 \times 2)$  added-strand reconstruction. Inspection of Fig. 8 reveals that at 423 K the  $c(6 \times 2)$  phase does not become stable until the  $O_2$  pressure exceeds  $10^{-2.5}$  bar. Thus, the correct phase is only predicted if a pressure correction of at least  $10^{2.5}$  bar is included, thereby establishing a minimum value for the pressure correction at 423 K. We can also identify a maximum error in pressure by noting that at 423 K under  $10^{-4}$  mbar  $O_2$  pressure the  $p(2 \times 1)$  phase was dominant, implying a maximum error of  $10^4$  bar, in good agreement with the originally proposed  $10^3$  bar error at 423 K.

This phase diagram indicates that the equilibrium phases of the Ag(110)–O system will appear at approximately 528.5 eV in the  $O_{1s}$  spectrum, suggesting that the species giving rise to the small features at 529.2 eV and 530.3 eV in Fig. 4 could be contaminants or some other species not associated with an equilibrated Ag(110)–O system. Although these species are only minor components in our experiment, the feature at 529.2 eV is typically assigned to the “ $O_7$ ” species that is thought to participate in the partial oxidation of methanol<sup>108–110</sup> and the position of the feature at 530.3 eV is consistent with the electrophilic oxygen species that participates in alkene epoxidation, both of which can be prepared on Ag(110) foils.<sup>24</sup> While at this point we cannot identify the atomic structure of these species, the data presented herein makes the widely accepted assignment of electrophilic oxygen to chemisorbed atomic oxygen appear dubious. In addition to the low  $O_{1s}$  binding energy of unreconstructed atomic oxygen, the calculated O K-edge spectra of unreconstructed atomic oxygen do not resemble that measured for electrophilic oxygen, which is characterized by a single broad absorption at 541 eV due to O p and Ag sp mixing.<sup>10</sup> Instead, all atomic oxygen species on silver have strong features near the

Fermi energy level, which are caused by O p states mixing with Ag sd levels.

#### 4.5 Summary of Ag(110) surface

In summary, *ab initio* atomistic thermodynamics predict that under an oxygen atmosphere the Ag(110) surface is covered in a series of oxygen induced surface reconstructions. These predictions are verified by the measured and calculated XPS and XANES. We find no evidence for the presence of unreconstructed atomic oxygen adsorbed on the surface, nor are the spectroscopic features of such a species in agreement with the electrophilic oxygen thought to participate in alkene epoxidation on silver.

Because the activity and selectivity of the Ag(110) surface as an ethylene epoxidation catalyst are similar to those of the Ag(111) surface,<sup>111</sup> and the Ag(111) surface will likely be the dominant crystallographic surface on powders owing to its lower surface free energy, it is worthwhile to see if these results are specific to the (110) face.

## 5 Ag(111) surface

Despite the low dissociative sticking coefficient of oxygen on the Ag(111) surface, a variety of adsorbed oxygen species are known to form, and the close packed facet is catalytically active.<sup>111</sup> The most well studied of these surface oxygen species from an experimental perspective is the  $p(4 \times 4)$  surface reconstruction that was first found in 1972 by dosing an Ag(111) surface with high  $O_2$  pressure.<sup>112</sup> This finding sparked a great deal of interest in the Ag(111)–O system, as (111) planes are likely to be the dominant facets under catalytic conditions.<sup>32</sup> As a result, the  $p(4 \times 4)$  reconstruction is one of the most well studied in the silver oxygen system, though its structure was not fully resolved until 2006.<sup>25,26</sup>

It is now known that the  $p(4 \times 4)$  phase is part of a family of surface reconstructions formed by a structural motif that consists of two six-member silver triangles. One of these triangles sits on the fcc sites of the (111) surface, the other sits on the hcp hollow sites. Two oxygen atoms lie between neighboring triangles as shown in Fig. 9.<sup>27</sup> The silver atoms in the  $Ag_6$  triangles are shaded white in this figure to distinguish

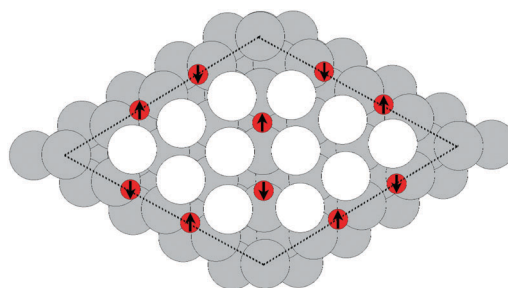


Fig. 9 The atomic structure of the  $p(4 \times 4)$  reconstruction. The silver atoms in the  $Ag_6$  units are shaded white. Oxygen atoms are shown as small red circles. The arrows show which oxygen atoms lie above the  $Ag_6$  plane (up arrows) and below the  $Ag_6$  plane (down arrows). Subsurface silver atoms are shown by way of large grey circles.



them from the underlying silver surface, which is shaded grey. The unit cell is indicated by the way of a black dashed line. The oxygen atoms (red circles) on the edges of the  $\text{Ag}_6$  triangles occupy two symmetry unique positions, one above the  $\text{Ag}_6$  plane and its neighbor below the plane. The up arrows label the oxygen atoms that lie above the  $\text{Ag}_6$  plane, and the down arrows show the oxygen atoms that lie below the  $\text{Ag}_6$  plane.

### 5.1 Thermodynamics

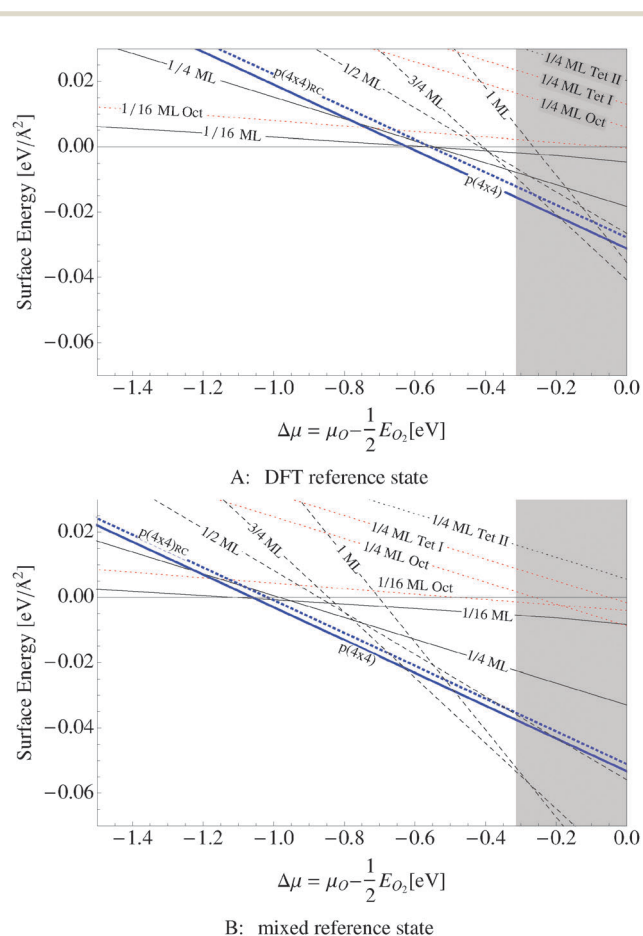
We found that the  $p(4 \times 4)$  phase is thermodynamically favorable at low oxygen chemical potential (see the thick solid blue line in Fig. 10A and B). The thick blue dashed line shows an older model of the  $p(4 \times 4)$  reconstruction of slightly higher energy that appears throughout the literature<sup>113</sup> (see Appendix A). The thin solid lines in the figure show the surface free energy of 1/16 and 1/4 ML coverages of adsorbed oxygen, while the thin

dotted lines show the surface free energy of three types of subsurface oxygen that will be discussed in Section 5.3, and the dashed lines represent the surface free energy of thin oxide-like layers, the details of which are discussed in Section 5.4.

The grey shaded region indicates the chemical potential at which the oxide,  $\text{Ag}_2\text{O}$ , becomes thermodynamically stable. The top panel in Fig. 10 was computed using the total energy of an isolated  $\text{O}_2$  molecule calculated within DFT as the reference energy. The bottom panel, Fig. 10B, employs the alternate  $\text{O}_2$  reference state—twice the energy of the isolated oxygen atom plus the experimental  $\text{O}_2$  binding energy.

Regardless of the choice of the  $\text{O}_2$  reference state, our findings suggest that the  $p(4 \times 4)$  reconstruction is the only stable phase in the oxygen poor limit, save for chemisorbed oxygen at or below 1/16 ML coverage, in excellent agreement with STM experiments showing that when the concentration of adsorbed oxygen exceeds 0.05 ML on the  $\text{Ag}(111)$ , islands of the  $p(4 \times 4)$  reconstruction begin to form.<sup>114</sup> Although changing the  $\text{O}_2$  reference state shifts the free energy curves almost rigidly, this behavior is not an artifact of the possible over-binding of the  $\text{O}_2$  molecule introduced by the PBE exchange and correlation potential. By way of example, the full DFT result, top panel of Fig. 10, predicts that the  $p(4 \times 4)$  phase is the thermodynamically stable phase in the range of  $-0.6 \text{ eV} < \Delta\mu_{\text{O}} < -0.3 \text{ eV}$ . At higher oxygen chemical potentials  $\text{Ag}_2\text{O}$  becomes stable, whereas at  $\Delta\mu_{\text{O}} \approx -0.6$  the 1/16 ML adsorbed O phase becomes energetically competitive with the  $p(4 \times 4)$  phase as the system transitions to the clean surface. When the experimental binding energy of  $\text{O}_2$  is employed instead of the full DFT reference state, see Fig. 10B, the  $p(4 \times 4)$  phase is favorable at significantly lower oxygen chemical potentials, down to  $\Delta\mu_{\text{O}} \approx -1.0 \text{ eV}$ . However, as before, the 1/16 ML adsorbed O phase becomes energetically competitive before the clean surface, in this case at  $\Delta\mu_{\text{O}} \approx -1.0$ . In these two cases the relative stability of the phases does not change.

When the oxygen chemical potential is near the experimental heat of formation of the bulk oxide the two  $\text{O}_2$  reference states yield qualitatively different results. The full DFT approach predicts that the  $p(4 \times 4)$  phase is thermodynamically stable until the oxygen chemical potential reaches the heat of formation of the bulk oxide. In this case the thin oxide-like structures may be metastable, but they do not appear on the equilibrium phase diagram. When the experimental  $\text{O}_2$  binding energy is employed as part of the  $\text{O}_2$  reference state, a series of thin oxide-like surfaces become the stable phases when  $\Delta\mu_{\text{O}}$  rises above  $-0.6 \text{ eV}$ . These phases transition into the bulk oxide when  $\Delta\mu_{\text{O}}$  equals the heat of formation of  $\text{Ag}_2\text{O}$ . The enhanced thermodynamic stability of the thin oxide-like phases has previously been proposed in ref. 106 when the experimental  $\text{O}_2$  binding was employed in conjunction with DFT energies for the oxide-like surfaces. In contrast, the lack of thin oxide-like phases on the equilibrium phase diagram is consistent with the calculated phase diagram found using an  $\text{O}_2$  reference state calculated by way of DFT in ref. 16 and 17. At the present time we do not have sufficient experimental evidence to support either prediction, but since our results on the  $\text{Ag}(110)$  surface suggest that the



**Fig. 10** Surface free energies for various oxygen species on the  $\text{Ag}(111)$  surface computed using two different  $\text{O}_2$  reference states: the total energy of an isolated  $\text{O}_2$  molecule calculated by way of DFT and two times the energy of an oxygen atom plus the experimental  $\text{O}_2$  binding energy. The grey box shows the range of oxygen chemical potential over which the bulk oxide,  $\text{Ag}_2\text{O}$ , is stable. The thick blue solid line represents the surface free energy of the  $p(4 \times 4)$  surface reconstruction and the thick dotted blue line represents the surface free energy of an alternative  $p(4 \times 4)$  surface reconstruction.<sup>16,17</sup> The black dashed line corresponds to an oxide like layer, while the solid black lines are chemisorbed atomic O and thin dotted lines are dissolved atomic O.



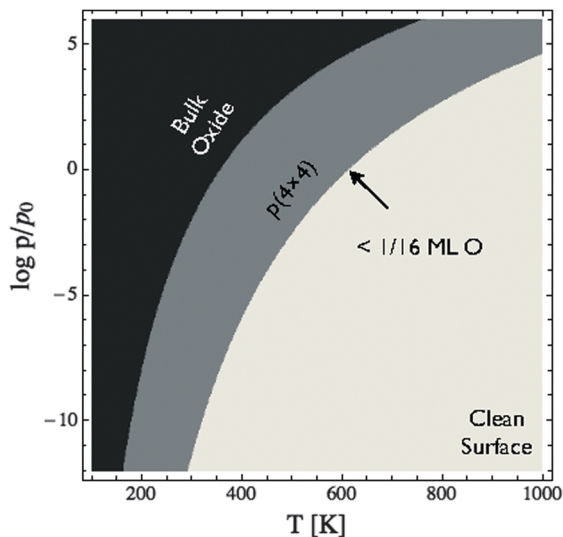


Fig. 11 Phase diagram for the Ag(111)–O system calculated using the full DFT results shown in Fig. 10. Note that chemisorbed oxygen at 1/16 ML coverage (or below) is energetically competitive with the  $p(4 \times 4)$  reconstruction only at oxygen chemical potentials where the reconstruction and chemisorbed atomic oxygen become unstable relative to the clean surface.

experimental binding energy of  $O_2$  significantly overestimates the stability of adsorbed oxygen, we have chosen to focus on the full DFT results.

To facilitate comparison with experiment we have replotted the full DFT phase diagram as a function of  $(P, T)$  in Fig. 11. Recall from Section 4 the pressure is likely underestimated by  $10^3$  bar in the phase diagram of the Ag–O system derived using *ab initio* atomistic thermodynamics when the vibrational and configurational entropy contributions to the surface free energy are ignored. Despite this error, our findings suggest that the  $p(4 \times 4)$  reconstruction is the only stable phase in the oxygen poor limit, save for the possibility that chemisorbed oxygen at or below 1/16 ML coverage may be stable to  $< 5$  K above the  $p(4 \times 4)$  reconstruction. These findings are in agreement with Temperature Programmed Desorption (TPD) experiments indicating that the  $p(4 \times 4)$  phase desorbs as one peak, see for instance Fig. 1 in ref. 9, or possibly two peaks within  $\approx 10$  K of one another, see Fig. 7 in ref. 115 and 116, leaving the clean surface. As a further test of the reliability of Fig. 11 we prepared the  $p(4 \times 4)$  reconstruction, as confirmed by XPS and XANES.

## 5.2 Chemisorbed reconstructed and unreconstructed oxygen

**5.2.1  $O_{1s}$  binding energies.** Oxygen in the  $p(4 \times 4)$  phase prepared under UHV conditions is known to appear as a single peak centered around 528.3 eV in the  $O_{1s}$  spectrum, with different authors reporting somewhat different values (528.2 eV,<sup>9</sup> 528.3 eV,<sup>1</sup> and 528.5 eV<sup>27</sup>). Our calculated  $O_{1s}$  binding energies for the two symmetry unique oxygen atoms are in excellent agreement with these results, appearing at 528.1 eV and 528.2 eV, for the upper and lower atoms, respectively. Oxygen species in this range have also been observed on silver powders with 0.45  $\mu\text{m}$  particle size under *in situ* conditions.<sup>24</sup> Considering that the low energy (111) face is likely to be

the dominant low index face on powders it is reasonable to postulate that such signals could be due to the  $p(4 \times 4)$  phase, although a number of other oxygen species were also found to coexist with this species under *in situ* conditions on powders.

To elucidate only those species present on the Ag(111) surface under *in situ* conditions we exposed a clean Ag(111) surface to  $4 \times 10^{-4}$  mbar  $O_2$  pressure at 423 K. Fig. 11 reveals that the *ab initio* atomistic thermodynamics calculations predict that, under these conditions, the  $p(4 \times 4)$  reconstruction is marginally stable when the pressure correction of  $10^3$  bar found in Section 4.4 is taken into account. If the pressure correction is ignored the clean surface is predicted to be stable, though we cannot rule out the possibility of a low concentration ( $< 1/16$  ML) of adsorbed oxygen. In order to identify which of these phases is present we can turn to spectroscopic measurements.

By measuring the XPS at a fast scan rate we found that during the first minute of  $O_2$  dosing at 423 K an oxygen species with an  $O_{1s}$  binding energy of 527.95 eV appeared in the measured spectrum, see Fig. 12, which shows the  $O_{1s}$  spectrum after 1, 2, 7 and 23 minutes of  $O_2$  dosing. The  $O_{1s}$  binding energy of this species lies between what we have calculated for unreconstructed chemisorbed atomic oxygen and oxygen in the  $p(4 \times 4)$  reconstruction. The experimentally measured O/Ag ratio of approximately 0.05 ML (see Fig. 13) reveals that this state has an oxygen coverage close to the 1/16 ML thermodynamic limit calculated for unreconstructed atomic oxygen, suggesting that the species observed at 527.95 eV is unreconstructed atomic oxygen.

After five minutes of additional  $O_2$  exposure the oxygen coverage increases to approximately 0.15 ML, which can be seen in the plot of the O/Ag ratio as a function of dosing time shown in Fig. 13 (top). The bottom panel of Fig. 13 shows the position of the center of the  $O_{1s}$  peak at the corresponding times. Comparing the two panels reveals that the increase in oxygen coverage is mirrored by an increase in the  $O_{1s}$  binding

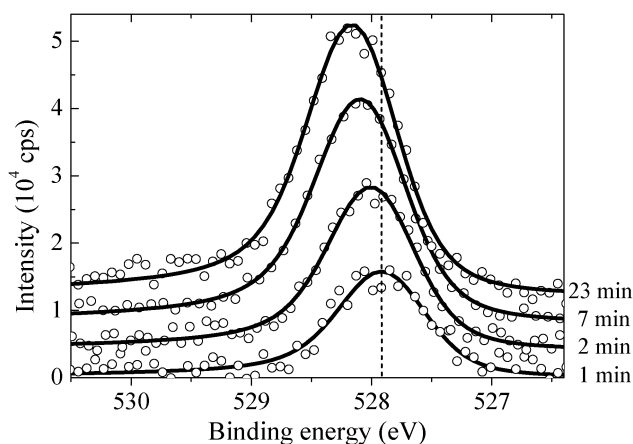


Fig. 12 The measured  $O_{1s}$  spectrum of the Ag(111) surface exposed to  $4 \times 10^{-4}$  mbar  $O_2$  pressure at 423 K for 1, 2, 7 and 23 minutes (from bottom to top). The noise in the measured spectrum is the result of the fast scan rate, 1 scan per minute, required to follow the short time scale evolution of the oxygen species. The vertical dashed line shows the  $O_{1s}$  binding energy obtained for chemisorbed atomic oxygen.



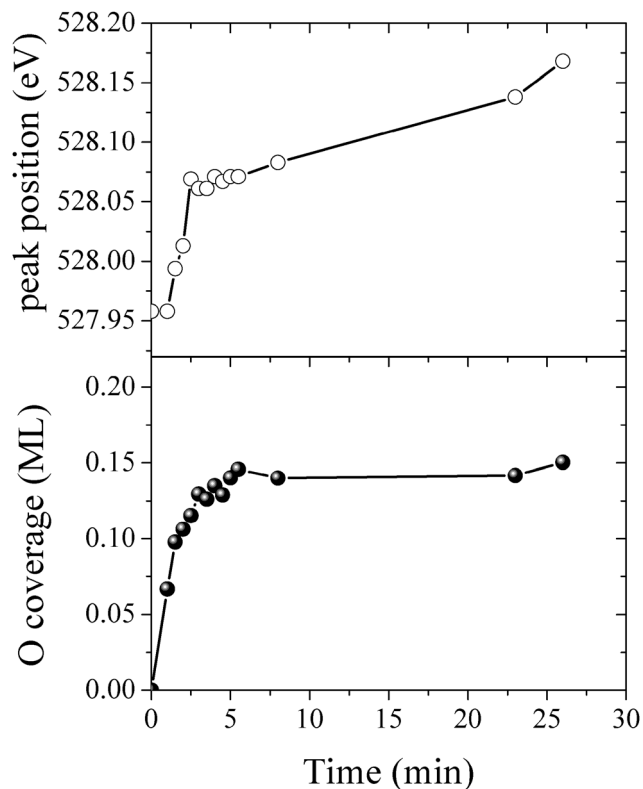


Fig. 13 The O/Ag ratio (top) and the O<sub>1s</sub> peak position (bottom) measured as a function of time for the Ag(111) surface exposed to  $4 \times 10^{-4}$  mbar O<sub>2</sub> pressure at 423 K.

energy towards the value calculated for oxygen in the  $p(4 \times 4)$  phase (see Fig. 13). We interpret this increase in oxygen coverage and O<sub>1s</sub> binding energy as a transition from atomic oxygen chemisorbed on the unreconstructed Ag(111) to a surface covered with islands of the  $p(4 \times 4)$ , or similar reconstructions (see ref. 27).

After 48 minutes of treatment under  $4 \times 10^{-4}$  mbar O<sub>2</sub> pressure at 423 K the oxygen coverage reaches 0.19 ML and the primary O<sub>1s</sub> feature shifts to 528.2 eV, as shown in Fig. 14. Two additional peaks that were either not present, or not resolved, at a fast scan rate needed to follow the dynamics can also be seen in the O<sub>1s</sub> spectrum. The minor components of the spectrum appear as a shoulder on the high binding energy side of the main feature fit with a gaussian at 529.1 eV, an O<sub>1s</sub> binding energy consistent with the bulk oxide, Ag<sub>2</sub>O, and a peak at 530.4 eV that is well removed from the main O<sub>1s</sub> feature.

Comparing the calculated O<sub>1s</sub> binding energies of unreconstructed chemisorbed atomic oxygen and oxygen in the  $p(4 \times 4)$  reconstruction with the measured O<sub>1s</sub> spectrum reveals that the reconstruction is consistent with the experimental results obtained after 48 minutes of O<sub>2</sub> treatment. Our calculated O<sub>1s</sub> binding energy for chemisorbed atomic oxygen reaches a maximum of 527.6 eV at 1/16–1/4 ML coverage, see Table 1, dropping to 527.1 eV at higher coverages. It is worth noting that at 1/2 ML coverage adsorbed atomic oxygen becomes ferromagnetic with a total magnetization of  $1.1 \mu_B$  for the  $(2 \times 2)$  surface unit cell. However, including spin-polarization has a negligible effect on

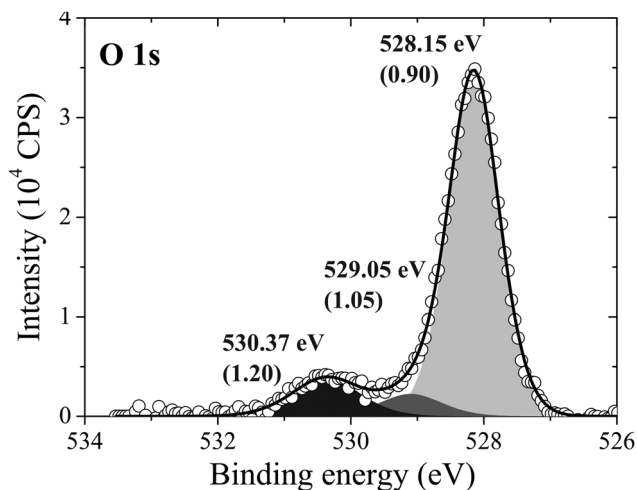


Fig. 14 The measured O<sub>1s</sub> spectrum of Ag(111) after dosing oxygen for 48 minutes at 423 K and  $10^{-4}$  mbar O<sub>2</sub> pressure.

the O<sub>1s</sub> binding energy, increasing it to 527.4 eV. At lower oxygen coverage the adsorbed atomic oxygen does not acquire a magnetic moment. Thus, at the 0.19 ML coverage we observed experimentally, our calculations predict that if this state were composed entirely of unreconstructed atomic oxygen, it would give rise to an O<sub>1s</sub> feature 0.3 eV below the measured value of 528.2 eV. However, this small difference in O<sub>1s</sub> binding energies lies within the 0.3 eV error we estimated for the  $\Delta$ SCF approach, making definitive assignment problematic. This ambiguity can be removed by exploiting the O K-edge spectrum of the oxygen treated Ag(111) crystal.

**5.2.2 O K-edge spectra.** Fig. 15 shows the *in situ* O K-edge spectrum of the Ag(111) surface after O<sub>2</sub> dosing, using black dots. The calculated O K-edge spectra of oxygen in the  $p(4 \times 4)$  reconstruction (b) and 1/16 ML unreconstructed chemisorbed atomic oxygen (c) are shown by way of solid lines. The measured

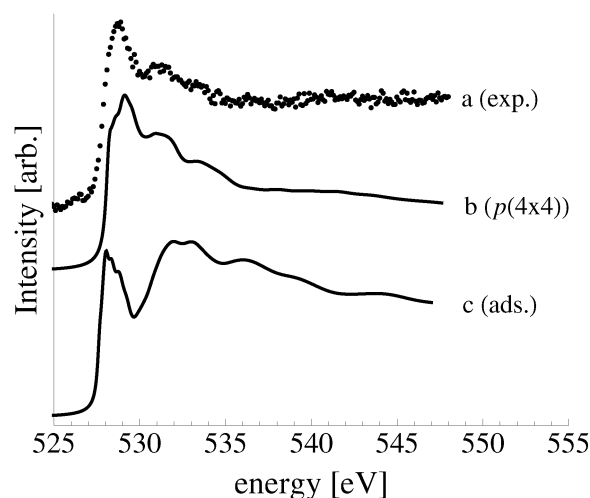


Fig. 15 The O K-edge spectrum measured after dosing the Ag(111) single crystal with oxygen for 48 minutes at 423 K and  $10^{-4}$  mbar O<sub>2</sub> pressure (a). The calculated spectra of oxygen in the  $p(4 \times 4)$  reconstruction on the Ag(111) surface (b) and 1/16 ML unreconstructed chemisorbed atomic oxygen (c).



spectrum has a strong near threshold absorption at approximately 529 eV and a second minor absorption at approximately 531 eV. As previously mentioned, the near threshold absorption is typical of both nucleophilic oxygen and the bulk oxide,  $\text{Ag}_2\text{O}$ , and is indicative of hybridization of the O 2p states with the Ag 4d states.<sup>10</sup> While the calculated O K-edge spectra of both oxygen in the  $p(4 \times 4)$  phase, Fig. 15a, and chemisorbed atomic oxygen on the unreconstructed Ag(111) surface, Fig. 15c, also display this feature, the measured spectrum lacks the strong absorption at 533 eV seen in Fig. 15c. Instead, the measured O K-edge spectrum is in good agreement with that calculated for the  $p(4 \times 4)$  phase, thereby confirming that islands of the  $p(4 \times 4)$  reconstruction are present at 473 K under  $4 \times 10^{-4}$  mbar  $\text{O}_2$  pressure.

While these findings demonstrate that, with the  $10^3$  bar pressure correction, Fig. 11 correctly predicts that the  $p(4 \times 4)$  phase is present at 423 K under  $4 \times 10^{-4}$  mbar  $\text{O}_2$  pressure, it does not allow us to identify the minor components in the XPS spectrum. Elucidating the atomic structure of the species appearing at 529.1 eV and 530.3 eV in Fig. 14 is of particular importance as the latter has an  $\text{O}_{1s}$  binding energy consistent with electrophilic oxygen and the binding energy of the former is close to that of the bulk oxide,  $\text{Ag}_2\text{O}$ . Recall from the introduction that both electrophilic oxygen<sup>10,11,21,22</sup> and the bulk oxide<sup>39–41</sup> have been postulated to play an important role in ethylene epoxidation. But because these species may not appear on the equilibrium phase diagram, to identify candidate structures we must turn to the calculation of the spectroscopic properties of different Ag–O species.

Focusing first on structures that were enumerated in the development of the phase diagram shown in Fig. 10, we see that we must consider species that may be present at locally higher concentrations of oxygen. At lower oxygen chemical potentials, only low coverages of chemisorbed atomic oxygen are predicted to be stable. At higher oxygen chemical potentials the thin oxide-like surfaces are the most stable surface structures. To form such an oxide-like layer, subsurface oxygen must be present. While Fig. 10 shows that subsurface oxygen is thermodynamically unfavorable under the experimental conditions, it may still appear as a transient species during the formation of a thin oxide-like layer. As previously noted, subsurface oxygen is widely believed to give rise to the feature at 530 eV in the  $\text{O}_{1s}$  spectrum.<sup>24</sup> While we have already shown that this statement is not true for oxygen beneath the Ag(110) surface, oxygen below an Ag(111) surface may give rise to higher  $\text{O}_{1s}$  binding energies due to the different types of holes present, as discussed in the next section.

### 5.3 Subsurface atomic oxygen

Three types of subsurface oxygen can appear beneath the pristine Ag(111) surface because of the three symmetry unique holes. Oxygen can dissolve in the octahedral hole as shown in Fig. 16A, or in one of the two types of tetrahedral holes, denoted types I and II. The type I hole is shown in Fig. 16B and is simply the hole beneath the hcp hollow site. The type II tetrahedral hole can be seen to be under the surface atom, Fig. 16C.

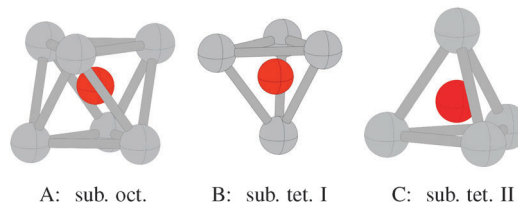


Fig. 16 Geometry of oxygen dissolved in the subsurface octahedral hole (A) and the type I (B) and type II (C) tetrahedral holes under an Ag(111) surface.

As may be expected based on the radius ratio of silver to oxygen, dissolving oxygen in the octahedral hole is energetically favored over the type I or type II holes at all oxygen coverages between 1/16 and 1 ML. The type I tetrahedral hole is energetically favored over the type II hole at all coverages below 1 ML.<sup>19</sup> Fig. 10 shows that subsurface oxygen is thermodynamically unfavorable over almost the entire range of allowed oxygen chemical potential, as seen from the three dotted lines of highest energy in the plot. The surface free energy of a surface with 1/4 ML subsurface oxygen can be seen to be positive relative to gas phase  $\text{O}_2$  and the clean silver surface, for  $\Delta\mu_{\text{O}}$  below the heat of formation of the bulk oxide, while 1/16 ML subsurface octahedral oxygen has a negative surface free energy relative to gas phase  $\text{O}_2$  and the clean silver surface down to  $\Delta\mu_{\text{O}} \approx -0.5$  eV.

The calculated  $\text{O}_{1s}$  binding energy of dissolved oxygen ranges from 528.2 eV in the type II hole to 528.7 eV in the octahedral hole. This finding shows that subsurface oxygen does not give rise to the  $\text{O}_{1s}$  signal at 530.4 eV commonly attributed to dissolved oxygen. However, considering the 0.3 eV error margin we estimate for the  $\Delta\text{SCF}$  approach, oxygen in the octahedral or type I hole could be attributed to the small  $\text{O}_{1s}$  feature at 529.1 eV in Fig. 14. Moreover, subsurface oxygen could be attributed to an oxygen species with an  $\text{O}_{1s}$  binding energy of 529.1 eV seen on silver powders exposed to 0.25 mbar  $\text{O}_2$  pressure at 453 K for 1–8 hours in ref. 24 and the  $\text{O}_\gamma$  species formed on Ag(111) single crystals after high temperature treatment ( $T > 700$  K) under 1 bar  $\text{O}_2$  pressure for 7 hours in ref. 108 and 117. However, the apparent thermodynamic stability of the oxygen species in ref. 24, 108 and 117 casts some doubt on the assignment of those features to subsurface oxygen.

The calculated O K-edge spectra of the subsurface species support the conclusion drawn from *ab initio* atomistic thermodynamics and the  $\text{O}_{1s}$  binding energies that a high concentration of subsurface oxygen was not present under our experimental conditions (see Fig. 17). Oxygen in both the octahedral (curve b) and type I tetrahedral holes (curve c) produces a strong absorption doublet at 531 eV in the O K-edge spectrum, whereas the experimental spectrum displays a minimum (curve a). Like the experimental spectrum, however, only small features appear above the absorption threshold in the calculated O K-edge spectra of dissolved oxygen. Oxygen in the type II tetrahedral hole (curve d) is also inconsistent with the measured spectrum. The spectrum of the dissolved species has a doublet centered at 529 eV and an additional moderate feature at 534 eV, similar to the calculated spectrum of bulk dissolved oxygen (curve e), which has a strong feature at 534 eV.



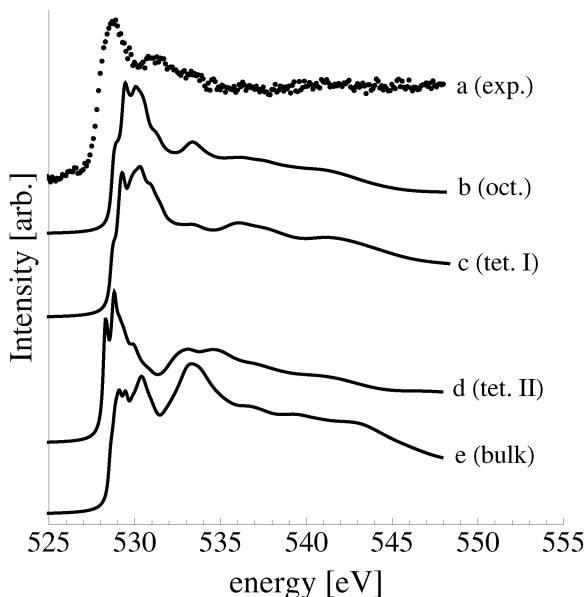


Fig. 17 O K-edge spectrum measured after dosing the Ag(111) single crystal with oxygen for 48 minutes at 423 K and  $10^{-4}$  mbar  $O_2$  pressure (a). The calculated O K-edge spectrum of oxygen in the octahedral (b), type I tetrahedral (c), and type II tetrahedral holes (d) of the Ag(111) surface. The calculated spectrum of dissolved oxygen is shown in (e), where dissolved oxygen was calculated by placing oxygen in the octahedral hole under the third silver layer in a seven silver layered slab.

Together these findings demonstrate that only a small concentration of subsurface dissolved oxygen may be present when an Ag(111) single crystal is exposed to  $4 \times 10^{-4}$  mbar  $O_2$  pressure at 423 K for 48 minutes, if any.

#### 5.4 Oxide like layers and bulk oxide

The atomic structure and energetics of the thin oxide-like layers that may become metastable when the oxygen chemical potential approaches the bulk oxide heat of formation have been discussed in detail in ref. 16 and 106. To briefly recapitulate, these thin oxide-like layers form when both chemisorbed and dissolved oxygen are present. The adsorbed oxygen sits on the fcc surface hollow sites, and the dissolved oxygen is present in the adjacent type I and type II tetrahedral holes. (Note that a similar structure can also be formed when atomic oxygen adsorbs in the hcp hollow site and simultaneously dissolves in the subsurface octahedral holes.<sup>16</sup> However, its spectroscopic properties are not appreciably different from the structures described herein.) This results in the formation of O–Ag–O trilayers which are commensurate with bulk  $Ag_2O$  that has been compressed by 14% laterally and expanded by 21% vertically. The thinnest of these is shown in the top panel of Fig. 18. Here 1/4 ML atomic oxygen chemisorbs on the fcc hollow site and 1/4 ML oxygen dissolves in a type I tetrahedral hole to form the linear O–Ag–O chain involved in the trilayer, yielding a structure with an effective oxygen coverage of 1/2 ML. While our *ab initio* atomistic thermodynamic calculations predict that this structure will not be thermodynamically competitive with the  $p(4 \times 4)$  phase, thicker oxide-like layers may become metastable

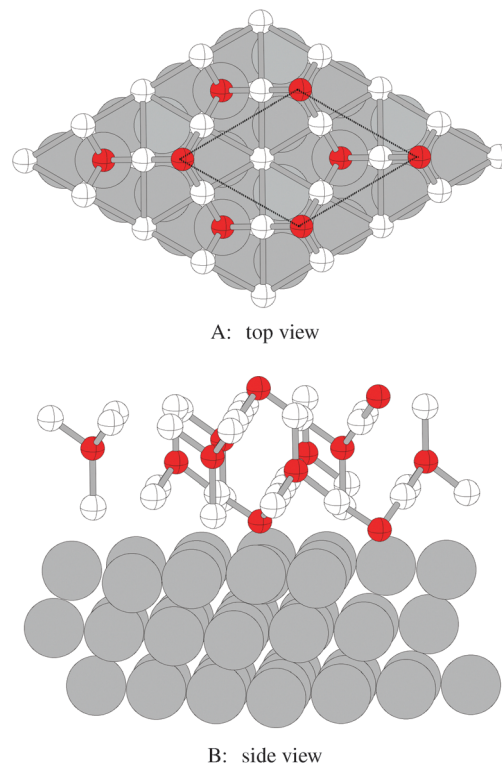


Fig. 18 Atomic positions in the low energy oxide-like structures on the Ag(111) surface viewed in the direction normal to the surface (A) and as a slice through the surface (B). The surface silver atoms are shaded white and the unit cell is indicated by way of the black dashed line. For clarity, thick lines are used to indicate bonds between nearest neighbors silver and oxygen atoms in the oxide-like layer.

at higher oxygen chemical potentials, as discussed in Section 5 and shown in Fig. 10.

These potentially metastable structures are formed by dissolving more oxygen in the type I and type II tetrahedral holes. For instance, introducing an additional 1/4 ML oxygen in the type II tetrahedral holes forms a three layered structure with an effective coverage of 3/4 ML. Fig. 10A shows that, when using the DFT reference state for  $O_2$ , this structure is predicted to have a lower surface free energy than the  $p(4 \times 4)$  reconstruction when  $\Delta\mu_O > -0.2$  eV. Increasingly the thickness of the trilayer structures formed by alternatively filling the type I and type II tetrahedral holes, like the four layered structure shown in the bottom panel of Fig. 18, may make the structures metastable at high oxygen chemical potentials. These structures have been shown to reach a maximum thickness of approximately 9 trilayers, after which  $Ag_2O$  will be formed.<sup>16</sup>

As these oxide-like layers are predicted to become thermodynamically competitive with the  $p(4 \times 4)$  reconstruction only at oxygen chemical potentials capable of stabilizing the bulk oxide, we compare the calculated spectroscopic features of these oxide-like layers to those we measured for the bulk oxide,  $Ag_2O$ , in Fig. 19.

At 1/2 ML coverage the surface oxygen atoms have a calculated  $O_{1s}$  binding energy of 528.6 eV and that of the oxygen in the type I hole is 529.1 eV as compared to the 529.2 eV



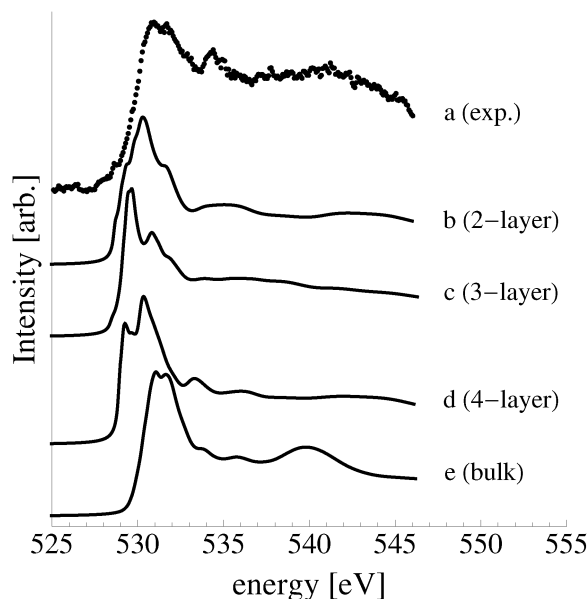


Fig. 19 Measured O K-edge spectrum of  $\text{Ag}_2\text{O}$  (a). The calculated O K-edge spectra of two (b), three (c), and four (d) layer oxide-like structures on the Ag(111) surface.

measured for the bulk oxide, see the entry “Oxide-like Layers (111)” in Table 1 for a summary. Further increasing the concentration of subsurface oxygen to yield the structure with an effective oxygen coverage of  $3/4$  ML increases the calculated  $\text{O}_{1s}$  binding energy of the on-surface oxygen to 528.9 eV and that of the first layer of subsurface oxygen to 529.2 eV. The oxygen in the type II tetrahedral hole has a calculated  $\text{O}_{1s}$  binding energy of 528.2 eV, as can be seen in Table 1.

A further increase in the concentration of subsurface oxygen to 1 ML results in the subsurface species appearing at 529.1 eV in the calculated  $\text{O}_{1s}$  spectrum and the chemisorbed oxygen remaining at 528.9 eV, nearly equivalent to the 529.2 eV measured for the bulk oxide. However, we found that oxygen on the oxygen terminated  $\text{Ag}_2\text{O}(001)$  surface has an exceptionally low  $\text{O}_{1s}$  binding energy, 526.8 eV, and only those oxygen atoms in the subsurface of the bulk oxide appear at 529.1 eV, in agreement with ref. 118, see the entry “Oxygen on  $\text{Ag}_2\text{O}(001)$  surface” in Table 1.

Despite the similarity between the  $\text{O}_{1s}$  binding energies of oxygen in the bulk of  $\text{Ag}_2\text{O}$  and the oxide-like layers on the Ag(111) surface, the bonding in the oxide-like layers is distinct from that in the bulk oxide, which gives rise to differences between the calculated O K-edge spectra of these systems. Curve (a) in Fig. 19 shows the O K-edge spectrum of  $\text{Ag}_2\text{O}$  measured in total electron yield (TEY). The calculated O K-edge spectra of the 2-layer (curve b), 3-layer (curve c), and 4-layer (curve d) oxide-like structures are also shown, along with that calculated for bulk  $\text{Ag}_2\text{O}$  (curve e). A strong absorption doublet can be seen at approximately 531 eV in the measured spectrum along with two minor absorptions, one at approximately 534 eV and one at 537 eV. The calculated spectrum of bulk  $\text{Ag}_2\text{O}$  (curve e) can be seen to reproduce all of these features. While the

oxide-like layers all have a strong near threshold absorption from O p and Ag d mixing, the spectra are distinct from that of  $\text{Ag}_2\text{O}$ . The spectrum of the two-layer oxide-like structure can be seen to have a broad absorption centered at 531 eV. The discrepancy with the  $\text{Ag}_2\text{O}$  spectrum highlights the fact that the bonding in the two layer structure does not resemble the bulk oxide, as the subsurface oxygen is bound to inequivalent silver atoms.<sup>106</sup> When a third layer of oxygen is introduced, the bonding remains distinct from  $\text{Ag}_2\text{O}$ , though a strong doublet appears in the calculated spectrum. However, the intensity ratio and peak positions in the spectrum of the 3 layer-oxide like structure are shifted from that found for  $\text{Ag}_2\text{O}$ . Including a fourth layer of oxygen in the oxide-like-layers leads to further changes in the calculated O K-edge spectrum, with a change in the relative intensities of the absorption in the leading edge doublet and the appearance of a feature at 534 eV, demonstrating that the oxygen bonding is slowly converging to that seen in  $\text{Ag}_2\text{O}$ . Thus, bonding in the oxide-like layers is discernible from bonding in bulk  $\text{Ag}_2\text{O}$ .

At this point, it is useful to summarize the results we have found for the  $\text{Ag}_2\text{O}(001)$  surface and the thin oxide-like layers on the Ag(111) surface. While the oxygen chemical potential in our experiments on the Ag(111) surface was not high enough to stabilize the oxide-like layers, experiments performed at higher oxygen chemical potential may do so.<sup>24</sup> The presence of the thin oxide-like layers with coverages of  $1/2$ – $1$  ML will lead to the appearance of features at approximately 529 eV in the  $\text{O}_{1s}$  spectrum. Features in this range have been reported from *in situ* studies performed under 0.25 mbar  $\text{O}_2$  pressure and temperatures of 450–500 K,<sup>11,24,108–110</sup> though they are typically associated with the “ $\text{O}_\gamma$ ” species formed after exposing silver to 1 bar  $\text{O}_2$  pressure for many hours at temperatures above 780 K.<sup>108–110</sup> While the calculated phase diagram in Fig. 11 casts doubt on such an assignment, our O K-edge calculations suggest that the presence of a thin oxide-like layer may be discernible from the O K-edge spectrum. Regardless, both the simulated XPS and XANES demonstrate that such an oxygen species is not the electrophilic oxygen that has been shown to correlate with ethylene oxide production.<sup>10,11,20–22</sup>

## 5.5 Defects

As none of the  $\text{O}_{1s}$  binding energies calculated for dissolved and adsorbed oxygen on or in a pristine Ag(111) crystal can be attributed to electrophilic oxygen, we also investigated the role of defects. It has been previously suggested that such sites play an important role in the catalytic properties of silver<sup>18,113,119,120</sup> and may also act as traps for dissolved oxygen.<sup>121</sup>

We begin by considering vacancies. It has been known for long that there is a strong interaction between oxygen atoms and silver vacancies, which makes surface vacancy formation facile<sup>122</sup> and could give rise to a thermally stable substitutional oxygen species.<sup>121,123,124</sup> In particular, STM data were used to argue that surface substitutional oxygen is present in a  $(\sqrt{3} \times \sqrt{3})R30^\circ$  array on the Ag(111) surface after high temperature/high  $\text{O}_2$  pressure treatment.<sup>119</sup> We will denote this structure





simply as  $(\sqrt{3} \times \sqrt{3})$ . This species was later argued to give rise to a feature at 529.0–529.3 eV in the  $O_{1s}$  spectrum, which dominates the spectrum after silver is being treated with 1 bar  $O_2$  pressure at temperatures greater than 770 K for many hours.<sup>108,110,117</sup>

In agreement with the hypothesis that a  $(\sqrt{3} \times \sqrt{3})$  substitutional oxygen phase forms at high temperature, ref. 18 found that the adsorption energy of substitutional atomic oxygen reaches a maximum on a  $(\sqrt{3} \times \sqrt{3})$  array. However, the adsorption energy is nearly identical to that of chemisorbed oxygen on the pristine surface at the same 1/3 ML coverage. Our calculations are in agreement with those of ref. 18, suggesting that, like other high coverage phases of chemisorbed atomic oxygen, oxygen chemisorbed on a  $(\sqrt{3} \times \sqrt{3})$  vacancy array will not be thermodynamically favorable under any  $\Delta\mu_O$ . It still may be present as a transient species, however, and will gain additional stability from configurational entropy at higher temperatures due to the fact that the substitutional oxygen sits at the center of the  $(\sqrt{3} \times \sqrt{3})$  vacancy array, resulting in three equivalent adsorption sites (see Fig. 20).

The calculated  $O_{1s}$  binding energy of the  $(\sqrt{3} \times \sqrt{3})$  array of substitutional oxygen shows that this species was not that observed in ref. 108, 110, 117 and 119. We calculated an  $O_{1s}$  binding energy of 527.9 eV, which is close to that found for a low coverage of chemisorbed atomic oxygen on the pristine surface, but significantly lower than that of 1/3 ML atomic oxygen on the pristine Ag(111) surface. This difference is, in part, due to the fact that when oxygen sits on a surface vacancy its charge is screened by the neighboring silver atoms. Therefore, the high concentration of oxygen does not significantly alter the  $O_{1s}$  binding energy, unlike on the pristine surface where the charge on neighboring oxygens is not screened, which tends to reduce the calculated  $O_{1s}$  binding energy at high coverages, Table 1.

While the  $O_{1s}$  binding energy of the surface substitutional is like that of a low coverage of unreconstructed atomic oxygen adsorbed on the Ag(111) surface, the O K-edge spectrum of oxygen in a  $(\sqrt{3} \times \sqrt{3})$  vacancy array is not (see curve (b) in Fig. 21). Instead, the O K-edge spectrum of the surface substitutional is characterized by a strong doublet centered at 529 eV in the O K-edge spectrum and a second minor absorption

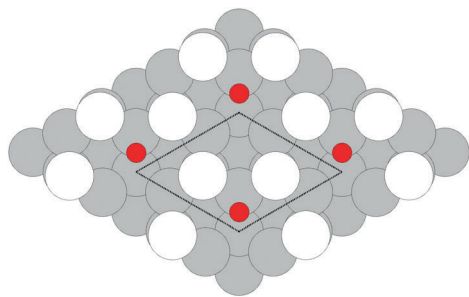


Fig. 20 Substitutional oxygen with  $(\sqrt{3} \times \sqrt{3})$  periodicity. The silver surface atoms are shaded white to distinguish them from the underlying (grey) silver atoms. The oxygen atoms, shown as small red circles, are displaced from the substitutional sites.

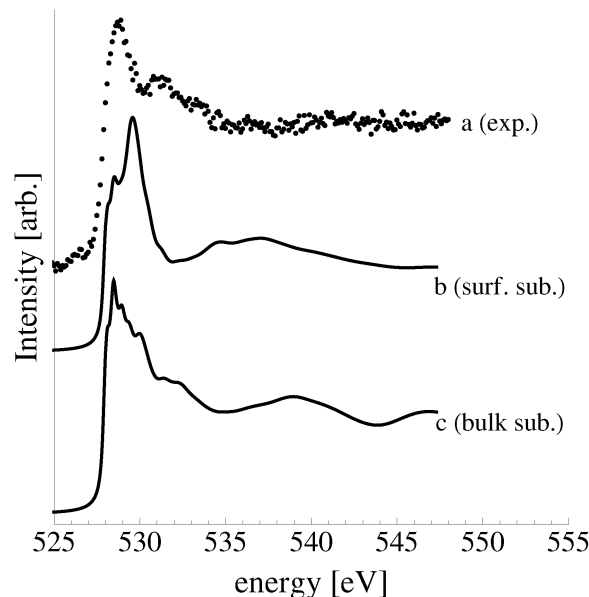


Fig. 21 The measured spectrum for Ag(111) exposed to  $O_2$  (a). The O K-edge spectrum of surface substitutional oxygen with  $(\sqrt{3} \times \sqrt{3})$  periodicity (b) and of bulk substitutional oxygen (c).

at 535 eV, whereas unreconstructed chemisorbed oxygen has strong features at 529 eV and 533 eV. Comparing the calculated O K-edge spectrum of the surface substitutional to that measured for oxygen on the Ag(111) surface, curves (a) and (b) in Fig. 21, suggest that a high concentration of the surface substitutional species was not present during our experiments.

Steps are another important class of surface defect that may adsorb oxygen. We considered how a (110) step on the Ag(111) surface would alter the  $O_{1s}$  binding energy. This step was chosen due the fact that these defects have been identified in the Ag–O system through the use of aberration corrected Transmission Electron Microscopy (TEM).<sup>120</sup> Furthermore, DFT calculations have shown that oxygen binds strongly in the edge of a (110) step,<sup>120</sup> as shown in Fig. 22. The  $O_{1s}$  binding energy of this species is, however, only 527.8 eV, in the same range as all other types of adsorbed unreconstructed atomic oxygen, forcing us to conclude that chemisorbed atomic oxygen will not appear at or above 530 eV in the  $O_{1s}$  spectrum, even in the presence of defects.

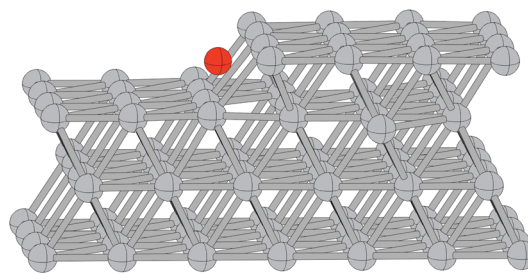


Fig. 22 Oxygen in the edge of a (110) step on a (111) surface. The silver atoms are shaded grey and nearest neighbor bonds are shown. The adsorbed oxygen atom is shaded red.



We can also examine bulk, as opposed to surface, defects. To begin, consider substitutional oxygen. Such species have been postulated to serve as oxygen diffusion channels during high temperature oxygen treatment of large-grain high-purity silver<sup>121</sup> and silver powders.<sup>109</sup> This species, like the surface substitutional, is often argued to appear at approximately 529 eV in the  $O_{1s}$  spectrum. We modeled the bulk substitutional as a 31 silver atom supercell with a single substitutional oxygen and found that, like on the surface, it is energetically favorable for the substitutional oxygen to displace off the silver lattice site. And again, like the surface substitutional, we found an  $O_{1s}$  binding energy of 527.9 eV.

The calculated O K-edge spectrum of the bulk substitutional species is shown in curve (c) of Fig. 21. Comparing it to our measured O K-edge spectrum reveals that the bulk substitutional was likely not the dominant species during our experiment. While the calculated spectrum has primary absorption consistent with the measured spectrum, its shape is not in excellent agreement. Based on spectroscopy alone, however, we are unable to dismiss the possibility that a fraction of the measured  $O_{1s}$  and O K-edge spectra could be due to dissolved substitutional oxygen near the silver surface.

In polycrystalline samples, another important type of defect will be present. Grain boundaries are thought to be the dominant path for oxygen diffusion in the silver lattice.<sup>121</sup> Though our experiments in this work were performed on single crystals, industrial catalysts are typically made using high surface area powders. As such, it is worthwhile to consider the effect of grain boundaries on the spectroscopic properties of dissolved oxygen in silver.

We calculated the  $O_{1s}$  binding energies of two concentrations of oxygen in a  $\Sigma 3$  and  $\Sigma 5$  grain boundary in silver. The  $\Sigma 3$  grain boundary was modeled using a 96 silver atom supercell built with 6, 16 atom, Ag(111) layers. This grain boundary is shown with a single dissolved oxygen in Fig. 23A. The twin boundary can be seen to run down the center of the cell. In this case, 1/16 of the octahedral holes at the grain boundary contain an oxygen atom, yielding an effective coverage of 1/16 ML on the grain boundary, which we will refer to simply as a 1/16 ML coverage. A second coverage of 1/8 ML was also investigated. The more open  $\Sigma 5$  grain boundary was modeled with the 80 atom supercell shown in Fig. 23B. Again, the boundary can be seen to run down the center of the cell. Including a single oxygen atom in this  $\Sigma 5$  grain boundary results in an effective coverage of 1/8 ML. A second coverage of 1/4 ML was also investigated.

At 1/16 ML coverage oxygen in the  $\Sigma 3$  grain boundary has an  $O_{1s}$  binding energy of 528.3 eV. When a second symmetry unique oxygen is introduced, increasing the coverage to 1/4 ML, the two atoms have marginally different  $O_{1s}$  binding energies, 528.3 eV and 528.5 eV, neither of which approaches the 530 eV commonly accepted for oxygen dissolved in silver.

It should also be noted that the adsorption energy of the 1/16 ML coverage of oxygen in the  $\Sigma 3$  grain boundary is much lower than that of 1/16 ML subsurface oxygen, even when the formation cost of the grain boundary is ignored. Dissolving 1/16 ML

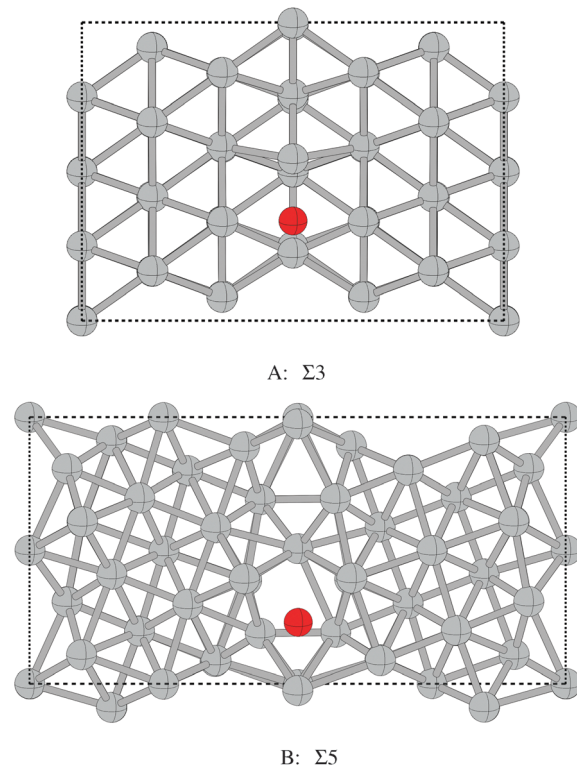


Fig. 23 Atomic structure of the  $\Sigma 3$  (A) and  $\Sigma 5$  (B) grain boundaries in silver viewed down the boundary. In both images, the grain boundary is in the center of the simulation cell. The silver atoms are shaded light grey and nearest neighboring bonds are shown. The adsorbed oxygen is shaded red. The dotted lines represent the edges of the simulation cell.

oxygen in the  $\Sigma 3$  grain boundary is endothermic by 0.30 eV relative to 1/2 gas phase  $O_2$ , whereas dissolving 1/16 ML oxygen in the octahedral holes under the pristine Ag(111) surface is 0.02 eV exothermic. As such, the system would prefer to dissolve oxygen under the pristine surface as opposed to at a  $\Sigma 3$  grain boundary. This observation can be rationalized by considering that when oxygen dissolves in the octahedral hole of silver it causes a local expansion of the neighboring silver atoms.<sup>19</sup> Near the surface, these neighboring atoms are free to expand, whereas, in the bulk, the silver atoms are constrained by the surrounding lattice. Because the volume of the octahedral holes at the twin boundary is not substantially larger than those in the bulk or subsurface it is energetically favorable to dissolve oxygen in the subsurface. By this logic, we would then expect the more open  $\Sigma 5$  grain boundary to have a higher oxygen adsorption energy.

In point of fact, the adsorption energy for 1/8 ML oxygen at the  $\Sigma 5$  grain boundary is substantially larger than that for 1/16 ML subsurface O. Dissolving an oxygen atom in this more open grain boundary is exothermic by 0.31 eV relative to 1/2 gas phase  $O_2$ , as compared to the 0.02 eV found for 1/16 ML in the octahedral holes under the pristine Ag(111) surface. Furthermore, increasing the oxygen concentration in the  $\Sigma 5$  grain boundary to 1/4 ML only reduces the adsorption energy by 0.02 eV per oxygen atom. This finding suggests that oxygen will preferentially dissolve in high  $\Sigma$  silver grain boundaries, when present, as opposed



to the subsurface, and could help explain the high concentrations of dissolved oxygen found in thermal desorption experiments.<sup>125</sup> However, the formation energy of the higher  $\Sigma$  grain boundaries is large.

The grain boundary formation energy,  $E_f^{\text{GB}}$ , is defined as:

$$E_f^{\text{GB}} = E_{\text{total}} - N_{\text{Ag}}E_{\text{Ag}}, \quad (11)$$

where  $E_{\text{total}}$  is the total energy of the simulation cell containing  $N_{\text{Ag}}$  silver atoms and a grain boundary.  $E_{\text{Ag}}$  is the total energy of a bulk silver atom. Thus, the grain boundary formation energy is simply the energy required to form the defect in a perfect crystal of  $N_{\text{Ag}}$  silver atoms. Using this definition we find that the  $\Sigma 3$  grain boundary in silver has a  $0.01 \text{ eV } \text{\AA}^{-2}$  formation energy, in agreement with the  $0.01 \text{ eV } \text{\AA}^{-2}$  measured for diffusion bonded  $\Sigma 3$  silver bicrystals.<sup>126</sup> The calculated formation energy of the  $\Sigma 5$  grain boundary we investigated is, however, substantially larger,  $0.28 \text{ eV } \text{\AA}^{-2}$ .

Though the  $\Sigma 5$  grain boundary can accommodate more dissolved oxygen than the pristine bulk or subsurface, the  $O_{1s}$  binding energies of oxygen dissolved at the grain boundary are still only 528.1 eV, regardless of coverage. Thus, we are forced to conclude that the electrophilic oxygen species is not dissolved atomic oxygen.

## 6 Conclusions

In an effort to identify the nature of the oxygen species that may be present on silver surfaces under ethylene epoxidation conditions, we performed a large series of *ab initio* atomistic thermodynamic calculations to identify thermodynamically favorable structures. These calculations showed that, of the structures considered, the well known  $p(2 \times 1)$  reconstruction of the Ag(110) surface and the  $p(4 \times 4)$  reconstruction of the Ag(111) surface are thermodynamically favorable at the oxygen chemical potentials relevant for ethylene epoxidation. Chemisorbed atomic oxygen was only found to be thermodynamically favorable under UHV conditions, while oxide-like surfaces may become metastable at oxygen chemical potentials capable of stabilizing the bulk oxide,  $\text{Ag}_2\text{O}$ .

We verified these predictions by comparing *in situ* XPS/XANES measurements to the theoretically derived spectra of a variety of oxygen species on the Ag(110) and Ag(111) surfaces. This combination of XPS/XANES allowed us to distinguish between oxygen species with the same  $O_{1s}$  binding energy, revealing that, under our experimental conditions, the oxygen on the silver surfaces was present almost entirely in surface reconstructions. The spectroscopic properties of these surface reconstructions are consistent with the nucleophilic oxygen species that participates in the total combustion of ethylene.

Though a high concentration of the electrophilic oxygen species thought to participate in ethylene epoxidation on silver was not present under our experimental conditions, we compared the spectroscopic properties we calculated for all the oxygen species that have been attributed to electrophilic oxygen to previously measured spectra. We found that both the  $O_{1s}$

binding energies and O K-edge spectra of all forms of atomic oxygen are inconsistent with the previously measured spectra of electrophilic oxygen. These findings have important implications on the continuing efforts to discover what role various oxygen species may play in ethylene epoxidation.

## Appendix

### A Alternate $p(4 \times 4)$ reconstructions

The stability we predict for the  $p(4 \times 4)$  phase at low  $\Delta\mu_{\text{O}}$  relative to chemisorbed oxygen is in slight disagreement with ref. 16 and 17, wherein the authors found that  $1/4 \text{ ML}$  of adsorbed atomic oxygen is thermodynamically favorable at low  $\Delta\mu_{\text{O}}$ . We tested to see if this discrepancy was the result of a different choice of the  $p(4 \times 4)$  phase. When Li *et al.* developed their phase diagram the accepted view of the  $p(4 \times 4)$  was a model first proposed by Rovida *et al.* in ref. 112 and later modified by Carlisle *et al.*,<sup>113</sup> which we will denote as  $p(4 \times 4)_{\text{RC}}$ . This structure, and related structures, has been thoroughly described in ref. 32.

The reconstruction first proposed by Rovida *et al.* can be thought of as an  $\text{Ag}_2\text{O}$  overlayer on the Ag(111) surface, while Carlisle *et al.* suggested that a silver atom must be removed from the overlayer, resulting in the structure shown in Fig. 24. This  $p(4 \times 4)_{\text{RC}}$  reconstruction has previously been shown to have a higher surface energy than many competing  $p(4 \times 4)$  structures.<sup>32</sup>

When the  $\text{O}_2$  reference state calculated by way of DFT, the top panel of Fig. 10, is employed, the surface free energy of the  $p(4 \times 4)_{\text{RC}}$  calculated herein is in excellent agreement with Li *et al.*'s findings. The  $p(4 \times 4)_{\text{RC}}$  reconstruction has a negative surface free energy down to  $\Delta\mu_{\text{O}} \approx -0.6 \text{ eV}$ . It also remains the most stable phase until the bulk oxide,  $\text{Ag}_2\text{O}$ , becomes thermodynamically stable. In contrast, we find that  $1/4 \text{ ML}$  ( $1/16 \text{ ML}$ ) chemisorbed atomic oxygen is unstable when  $\Delta\mu_{\text{O}}$  is less than  $-0.5 \text{ eV}$  ( $-0.6 \text{ eV}$ ), compared to  $-0.6 \text{ eV}$  ( $-0.7 \text{ eV}$ ) in ref. 16 and 17. As a result, the  $p(4 \times 4)_{\text{RC}}$  reconstruction is still (slightly) favored over  $1/4 \text{ ML}$  chemisorbed oxygen at low chemical potentials, in negligible disagreement with the results in ref. 16 and 17.

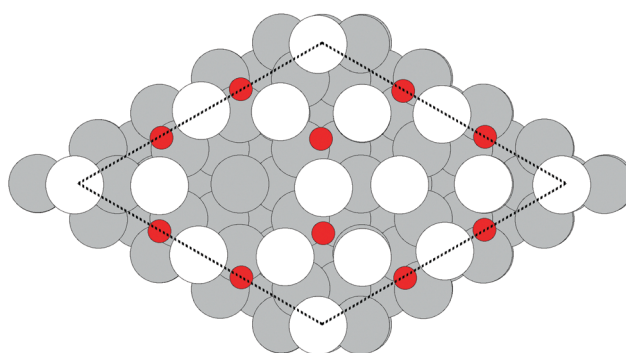


Fig. 24 The atomic structure of the  $p(4 \times 4)$  reconstruction suggested by Carlisle *et al.*<sup>113</sup> The surface silver atoms are shaded white. Oxygen atoms are shown as red and the subsurface silver as grey. The dotted line shows the surface unit cell.



Thus, while the  $p(4 \times 4)_{\text{RC}}$  reconstruction is less stable than the  $p(4 \times 4)$  reconstruction used in this work over the entire range of oxygen chemical potential, using the  $p(4 \times 4)_{\text{RC}}$  does not qualitatively alter the phase diagram presented herein.

## B Bulk $\text{Ag}_2\text{O}$ oxide

In order to compare the core level binding energies obtained by way of the  $\Delta\text{SCF}$  approach to experiment, we are required to have a reference state with a known core level binding energy. We chose bulk silver oxide,  $\text{Ag}_2\text{O}$ , for this purpose as there is little doubt about its atomic and electronic structure.<sup>127–129</sup>

$\text{Ag}_2\text{O}$  has the cuprite crystal structure with a unit cell consisting of a fcc silver lattice with an interpenetrating bcc oxygen lattice.<sup>127</sup> The silver atoms are linearly coordinated with oxygen atoms and the oxygen atoms tetrahedrally coordinated with silver atoms (see Fig. 25). Experimentally, the lattice constant is found to be 4.72–4.74 Å<sup>130–132</sup> close to our calculated value of 4.83 Å. Our calculated lattice constant is also very close to 4.84 Å, found using the PBE functional in ref. 127.

We computed the  $\Delta\text{SCF}$  energy of the  $\text{O}_{1s}$  electron using  $(1 \times 1 \times 1)$ ,  $(2 \times 2 \times 2)$ ,  $(3 \times 3 \times 3)$ , and  $(4 \times 4 \times 4)$  supercells to ensure that the  $\Delta\text{SCF}$  of the  $\text{Ag}_2\text{O}$  reference states is converged with respect to the cell size. In all cases a  $k$  point mesh equivalent to  $12 \times 12 \times 12$  for the unit cell was employed. The binding energy is well converged at the  $(3 \times 3 \times 3)$  cell with an  $\text{O}_{1s}$  binding energy within 0.01 eV, which was found for the  $(4 \times 4 \times 4)$  cell.

We used these same systems to test the size convergence of our calculated O K-edge spectra. Fig. 26 shows the results of the calculated spectra (solid lines) compared to that measured in total electron, TEY, (A) and fluorescence yield, TFY, (b) modes, which have not been corrected for self interaction. The top solid line corresponds to the  $(3 \times 3 \times 3)$  cell. Comparison of this spectrum with experimental spectra reveals that the calculations converge quickly with respect to the cell size. The  $(2 \times 2 \times 2)$  unit cell faithfully recovers the doublet at 530 eV, as well as features at approximately 534 eV, 536 eV, and 540 eV, although the absorption energy of these higher energy features is underestimated by 1 eV in the theoretical spectrum. The agreement with experiment is better when the cell size is increased to  $(3 \times 3 \times 3)$ . Further increasing the size of the cell to  $(4 \times 4 \times 4)$  offers no additional

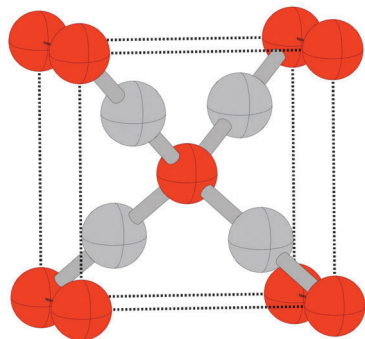


Fig. 25 The atomic structure of  $\text{Ag}_2\text{O}$ . The oxygen atoms (red) form a bcc lattice and the silver atoms (light grey) form an interpenetrating fcc lattice.

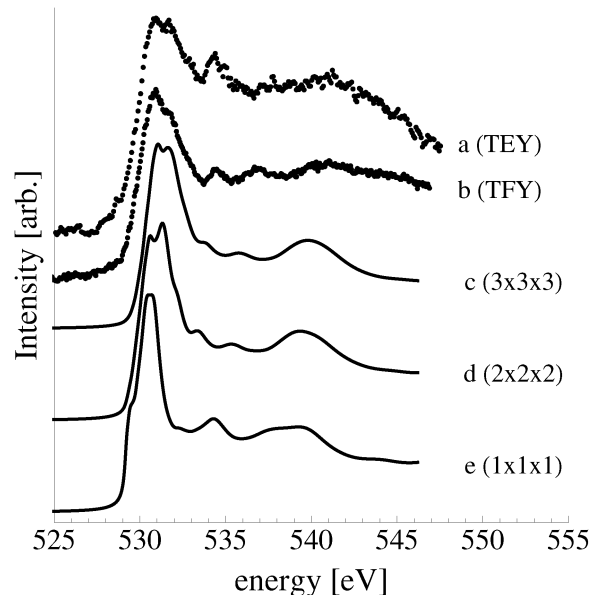


Fig. 26 The measured (a, b) and calculated (c–e) O K-edge spectra of  $\text{Ag}_2\text{O}$ . The solid curve in (c) shows the calculated result using a  $(3 \times 3 \times 3)$  cell, (d) shows the results from the  $(2 \times 2 \times 2)$  cell and (e) from the  $(1 \times 1 \times 1)$  cell. The spectrum measured in total electron yield mode (TEY) is shown in (a) and that measured in total fluorescence yield (TFY) mode is shown in (b). The vertical offset is only to aid in distinguishing the spectra.

improvement. Using these results we expect that to obtain reliable O K-edge spectra we must use supercells wherein the absorbing atom is separated from its periodic image by approximately 10 Å.

The O K-edge spectrum in Fig. 26 can be seen to be a sensitive measure of the local environment around oxygen. After inspection of the figure it is immediately obvious that the Ag–O bonding in  $\text{Ag}_2\text{O}$  is not purely ionic: if it were, the  $1s \rightarrow 2p$  transitions probed by the O K-edge spectrum would be devoid of absorptions. Instead, we can see that the system forms more directional bonds by hybridizing the triply degenerated O 2p states with the Ag 5s and 4d states, giving rise to the strong absorption above the threshold.<sup>102</sup> This type of p depletion through hybridization between oxygen p and silver sd states has also been observed for  $\text{Cu}_2\text{O}$ ,<sup>133</sup> which has a similar O K-edge spectrum to what we measured for  $\text{Ag}_2\text{O}$ .

## C In-plane polarization of incident X-rays

When the full absorption cross section tensor, Eqn 6 employed the angle between the  $\mathbf{E}$  vector of the incident radiation and both surface normal,  $\theta$ , and the  $x$ -axis in the plane of the surface,  $\phi$ , must be specified. While our experimental setup did not allow us to measure the in-plane angle, we found that averaging over  $\phi$  has a minor effect on the qualitative features of the computed spectra when  $\theta = 35^\circ$ , which is approximately the angle between the  $\mathbf{E}$  vector and the surface normal used in the experiment.

Take for example the  $p(2 \times 1)$  reconstruction of the Ag(110) surface shown in Fig. 1. In this case when  $\phi = 0^\circ$  the in-plane component of the  $\mathbf{E}$  vector of the incident radiation lies along



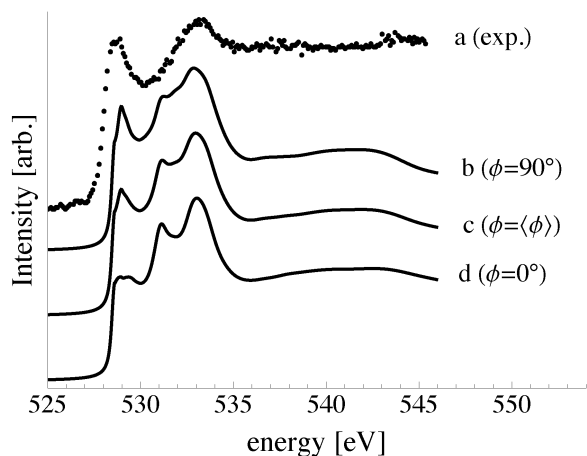


Fig. 27 The measured (a) O K-edge spectrum of oxygen adsorbed on the Ag(110) surface (a) and the computed O K-edge spectra of oxygen in the  $p(2 \times 1)$  reconstruction on the Ag(110) surface (b–d) with varying angle  $\phi$ , the angle between the in-plane component of the  $\mathbf{E}$  vector of the incident radiation and the  $[1\bar{1}0]$  direction along the surface.

the  $[1\bar{1}0]$  direction, *e.g.* normal to the added rows. Whereas, when  $\phi = 90^\circ$  the  $\mathbf{E}$  vector points along the added rows in the  $[001]$  direction. The corresponding calculated O K-edge spectra are shown in Fig. 27, along with the measured O K-edge spectrum and that calculated assuming no in-plane polarization,  $\phi = \langle \phi \rangle$ .

Inspection of Fig. 27 reveals that, at  $\theta = 35^\circ$ , the qualitative features remain largely unchanged with the choice of  $\phi$ . In all cases there is a near threshold absorption and a second absorption maximum at approximately 534 eV. While  $\theta = 90^\circ$  gives perhaps the best quantitative comparison with the experimental result, owing to the relative height of the primary absorptions. Conversely,  $\phi = 0^\circ$  gives the worst quantitative agreement with experiment due to the low intensity of the near threshold absorption. However we cannot use this comparison to assign the crystal orientation, see Appendix D for a discussion of the relative magnitude of the near threshold absorption. Thus, we have averaged over the in-plane angle when computing the O K-edge spectra.

#### D Core hole effect

While a core hole is present during XANES experiments its effect may not be observable and in some cases a better agreement with experiment is found by ignoring the core hole.<sup>76,77</sup> Its effect on the calculated edge depends on the nature of the low-lying empty levels of the ground state and the degree to which the compensator charge is localized on the absorbing atom. Core hole effect will be the largest when the compensatory charge is delocalized and the low lying states are on the absorbing atom and of the same symmetry of the final states allowed by the dipole selection rule.<sup>77</sup> Because all the systems we investigated have O p character in the low lying unoccupied states inclusion of the core hole may have an effect on the O K-edge spectra. However, due to the fact that the core hole is not necessarily treated correctly within a single particle

approximation it is impossible to know *a priori* if including or ignoring it will lead to better agreement with experiment.<sup>76,77</sup> To test the role of the core hole potential on the O K-edge spectra we repeated the XANES calculations with a standard pseudopotential on the absorbing atom.

We find that in every system inclusion of the core hole modifies the O K-edge spectrum relative to the spectrum without a core hole. There are two general types of changes that appear to be tied to the nature of the unoccupied levels of the ground state.

In the first case the low lying unoccupied O p states sit well above the Fermi energy in the ground state, and when the core hole is present, the compensatory charge is delocalized, as typified by  $\text{Ag}_2\text{O}$ . Fig. 28A shows the total density of states on the Ag atom (solid line) and the O p states (dashed line) in the absence of a core hole. The Fermi energy is set to zero and shown by a vertical line. Few states can be seen at the Fermi energy. The excited electron will fill states appearing at 2–4 eV above the Fermi energy, which are composed of Ag and O p character. As a result, when the simulation is performed in the presence of an  $\text{O}_{1s}$  core hole and the excited electron is included in the simulation, a Bader charge decomposition reveals that 0.7 electrons of the compensatory charge are localized on the absorbing atom.

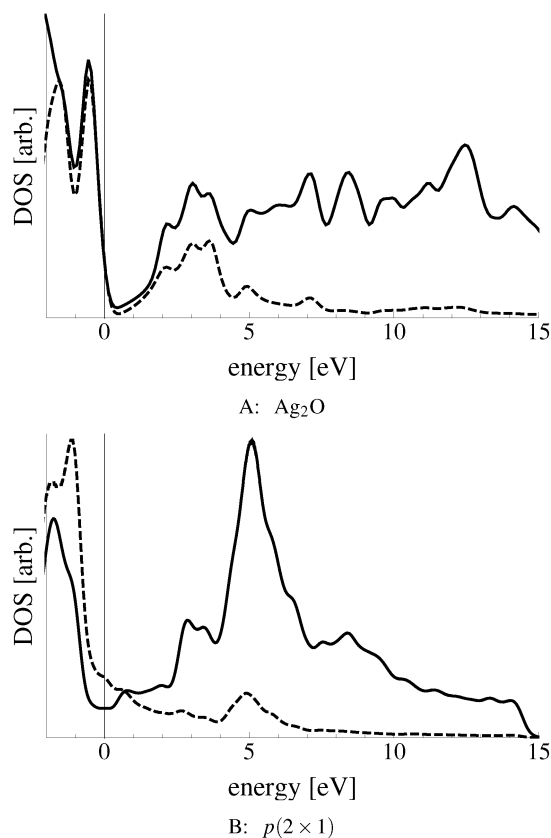


Fig. 28 (A) Density of O p states (dashed line) and the total density of states on Ag (solid line in  $\text{Ag}_2\text{O}$ ). (B) Density of O p (dashed line) and all Ag (solid line) states in the  $p(2 \times 1)$  reconstruction of the Ag(110) surface. In both cases the Fermi energy has been set to zero and is shown using a vertical line.



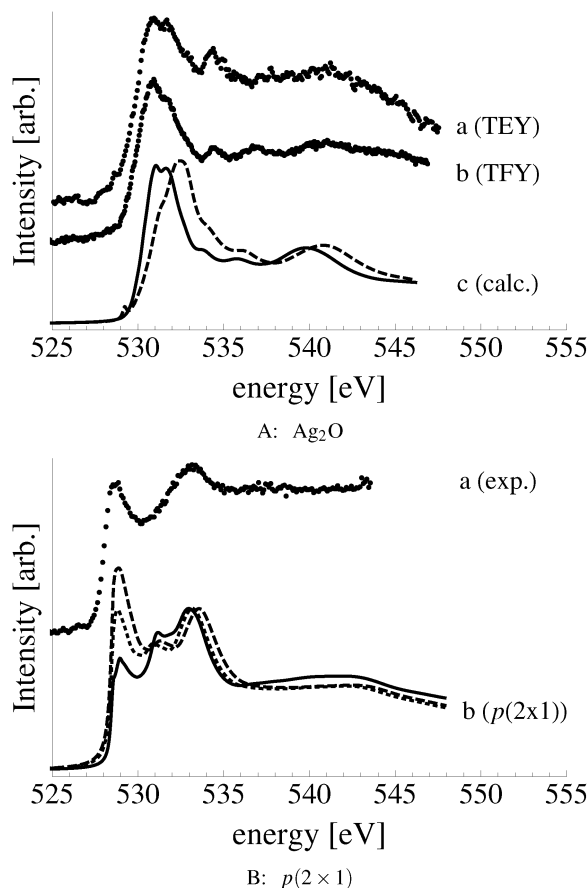


Fig. 29 O K-edge spectra of  $\text{Ag}_2\text{O}$  (A) and oxygen in the  $p(2 \times 1)$  reconstruction of the  $\text{Ag}(110)$  (B) calculated with (solid line) and without (dashed line) a core hole on the absorbing atom. The dotted line in (B) was generated by changing how the occupied states are removed from the spectrum in the absence of a core hole. The experimental results are shown for comparison.

Fig. 29A shows the O K-edge spectrum of the bulk oxide computed with (solid line) and without (dashed line) an  $\text{O}_{1s}$  core hole, along with the experimental spectra (collected in TEY and TFY modes), which are shown by way of dots. For ease of comparison the two computed spectra are normalized using the peak at approximately 533 eV. In the absence of the core hole the primary absorption is centered at 532.5 eV, whereas with the core hole it is centered at around 531.4 eV, as observed experimentally. In this type of system the core hole is required to recover the experimentally observed leading edge absorption. However, the reduced screening of the nuclear potential pulls the higher energy features too close to the Fermi energy. As a result, the small higher energy absorptions appear at 533.8, 535.8, and 539.8 eV in the spectrum calculated with a core hole, compared to 534.4, 536.9, and 541.1 eV in the measured spectrum. Thus, the principal function of the core hole in this type of system is to shift peak positions, and it must be included to recover the measured spectrum.

The second type of behavior is observed in systems with a high density of O p states at the Fermi energy. By way of example consider the  $p(2 \times 1)$  reconstruction of the  $\text{Ag}(110)$

surface. Fig. 28B shows the silver states (solid line) and the oxygen p states for this system. A high density of oxygen states can be seen to cross the Fermi energy and quickly diminish relative to the density of the silver states. When the  $\text{O}_{1s}$  core hole is introduced the compensatory charge fills these states and a Bader<sup>134</sup> charge analysis reveals that 0.8 electrons of that charge are localized on the absorbing atom. The effect the core hole has on the calculated O K-edge in this type of system is different from what was observed for  $\text{Ag}_2\text{O}$ .

Fig. 29B shows the O K-edge spectra of the  $p(2 \times 1)$  reconstruction of the  $\text{Ag}(110)$  surface calculated with (solid line) and without (dashed line) a core hole. (The dotted line is discussed below). The experimental spectrum is shown by way of dots, and the spectra are normalized using the peak at approximately 534 eV. Comparing Fig. 29A and B reveals that the peak positions shift much less with respect to the treatment of the core hole in the  $p(2 \times 1)$  reconstruction of the  $\text{Ag}(110)$  surface as compared to  $\text{Ag}_2\text{O}$ . Unlike the  $\text{Ag}_2\text{O}$  spectra, the position of the leading edge absorption of oxygen in the  $p(2 \times 1)$  reconstruction is insensitive to the presence of the core hole, though the increased nuclear potential of the partially screened core hole can still be seen to pull the higher energy peaks closer to the Fermi energy relative to the results without a core hole. However, the largest effect the core hole has on the calculated O K-edge spectrum of  $p(2 \times 1)$  reconstruction is a reduction in the magnitude of the leading edge absorption.

Comparing the spectrum obtained with the full core hole to the experimental spectrum in Fig. 29B reveals that the feature at 534 eV is too intense relative to the leading edge in the calculated spectrum. Excluding the core hole reverses the discrepancy; the calculated leading edge becomes too intense. However, the magnitude of the feature at 529 eV in the calculated spectrum is not entirely due to the treatment of the core hole. It also depends on how the occupied states are smoothly cut from the spectrum, which is problematic in metallic systems.<sup>76</sup> Removing states of slightly higher energy reduces the intensity of the leading edge peak, the dotted line in Fig. 29B. This problem is more pronounced in the ground state calculation as the core hole reduces the number of O p states at the Fermi energy level. To avoid the ambiguity associated with cutting the occupied states, and using a consistent approach in the metallic and insulating systems, we focus on results obtained using the full core hole.

In most of the metallic systems the decision to include the core hole makes little impact, as it only changes the magnitude of the leading edge. However, this discrepancy with experiment is pronounced for oxygen in the  $p(4 \times 4)$  reconstruction of the  $\text{Ag}(111)$  surface due to the shape of the spectrum. Fig. 30 shows the calculated O K-edge spectra of the  $p(4 \times 4)$  reconstruction of the  $\text{Ag}(111)$  surface computed with (solid line) and without (dashed line) inclusion of the core hole. The experimental result is also shown (dots). Both the computed spectra recover the experimental absorptions, though the core hole reduces the intensity of the leading edge. While this reduction in the intensity is similar to what was observed for oxygen in the  $p(2 \times 1)$  reconstruction of the  $\text{Ag}(110)$  surface, its impact on the qualitative shape of the spectrum is more dramatic due to the fact that the



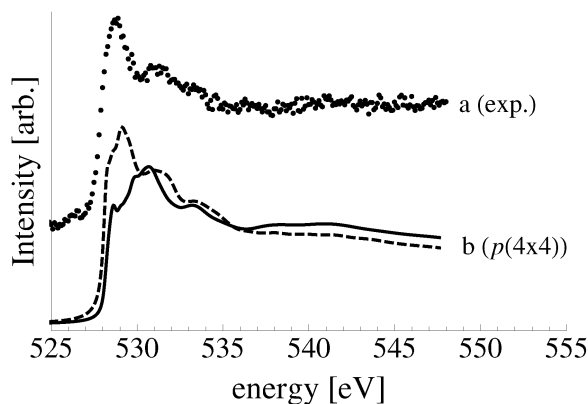


Fig. 30 The O K-edge spectra of the  $p(4 \times 4)$  reconstruction of the Ag(111) surface calculated with (solid line) and without (dashed line) a core hole on the absorbing atom (b). The experimental results are shown for comparison (a).

two principal absorptions appear within 3 eV of one another for oxygen in the  $p(4 \times 4)$  reconstruction, as opposed to the 6 eV separation between absorption in the  $p(2 \times 1)$  reconstruction. As such, we report the O K-edge spectrum in the absence of a core hole for oxygen in the  $p(4 \times 4)$  reconstruction of the Ag(111) surface.

## Acknowledgements

We acknowledge the CINECA award under the ISCRA initiative, for the availability of high performance computing resources and support, the Helmholtz-Zentrum Berlin (electron storage ring BESSY II) for provision of synchrotron radiation at the ISISS beamline, and the Australian Research Council for support.

## References

- 1 R. Reichelt, S. Gunther, M. Rossler, J. Winterlin, B. Kubias, B. Jakobi and R. Schlögl, *Phys. Chem. Chem. Phys.*, 2007, **9**, 3590–3599.
- 2 R. A. Van Santen and C. P. M. de Groot, *J. Catal.*, 1986, **98**, 530–539.
- 3 R. A. van Santen and H. P. C. E. Kuipers, The Mechanism of Ethylene Epoxidation, in *Advances in Catalysis*, ed. D. D. Eley, H. Pines and P. B. Weisz, Academic Press, 1987, vol. 35, pp. 265–321, ISSN 0360-0564, ISBN 9780120078356, DOI: 10.1016/S0360-0564(08)60095-4.
- 4 W. M. H. Sachtler, C. Backx and R. A. Van Santen, *Catal. Rev.*, 1981, **23**, 127–149.
- 5 C. T. Campbell and M. T. Paffett, *Surf. Sci.*, 1984, **139**, 396–416.
- 6 C. T. Campbell, *J. Catal.*, 1985, **94**, 436–444.
- 7 C. Backx, C. D. Groot, P. Biloen and W. Sachtler, *Surf. Sci.*, 1983, **128**, 81–103.
- 8 C. T. Campbell and M. T. Paffett, *Surf. Sci.*, 1984, **143**, 517–535.
- 9 C. T. Campbell, *Surf. Sci.*, 1985, **157**, 43–60.
- 10 V. I. Bukhtiyarov, M. Hävecker, V. V. Kaichev, A. Knop-Gericke, R. W. Mayer and R. Schlögl, *Phys. Rev. B: Condens. Matter Mater. Phys.*, 2003, **67**, 235422.
- 11 V. I. Bukhtiyarov, A. I. Nizovskii, H. Bluhm, M. Hävecker, E. Kleimenov, A. Knop-Gericke and R. Schlögl, *J. Catal.*, 2006, **238**, 260–269.
- 12 V. Bukhtiyarov, *Kinet. Catal.*, 2003, **44**, 420–431.
- 13 V. I. Bukhtiyarov, V. V. Kaichev and I. P. Prosvirin, *J. Chem. Phys.*, 1999, **111**, 2169–2175.
- 14 R. B. Grant and R. M. Lambert, *J. Catal.*, 1985, **92**, 364–375.
- 15 C. Stegelmann and P. Stoltze, *J. Catal.*, 2004, **226**, 129–137.
- 16 W.-X. Li, C. Stampfl and M. Scheffler, *Phys. Rev. B: Condens. Matter Mater. Phys.*, 2003, **68**, 165412.
- 17 W.-X. Li, C. Stampfl and M. Scheffler, *Phys. Rev. Lett.*, 2003, **90**, 256102.
- 18 W.-X. Li, C. Stampfl and M. Scheffler, *Phys. Rev. B: Condens. Matter Mater. Phys.*, 2002, **65**, 075407.
- 19 W.-X. Li, C. Stampfl and M. Scheffler, *Phys. Rev. B: Condens. Matter Mater. Phys.*, 2003, **67**, 045408.
- 20 T. C. R. Rocha, M. Hävecker, A. Knop-Gericke and R. Schlögl, *J. Catal.*, 2014, **312**, 12–16.
- 21 V. Bukhtiyarov, I. Prosvirin and R. Kvon, *Surf. Sci.*, 1994, **320**, L47–L50.
- 22 V. I. Bukhtiyarov and A. Knop-Gericke, *Nanostructured Catalysts: Selective Oxidations*, The Royal Society of Chemistry, 2011, pp. 214–247.
- 23 P. S. Bagus, F. Illas, G. Pacchioni and F. Parmigiani, *J. Electron. Spectrosc. Relat. Phenom.*, 1999, **100**, 215–236.
- 24 T. C. R. Rocha, A. Oestereich, D. V. Demidov, M. Hävecker, S. Zafeiratos, G. Weinberg, V. I. Bukhtiyarov, A. Knop-Gericke and R. Schlögl, *Phys. Chem. Chem. Phys.*, 2012, **14**, 4554–4564.
- 25 J. Schnadt, A. Michaelides, J. Knudsen, R. T. Vang, K. Reuter, E. Lægsgaard, M. Scheffler and F. Besenbacher, *Phys. Rev. Lett.*, 2006, **96**, 146101.
- 26 M. Schmid, A. Reicho, A. Stierle, I. Costina, J. Klikovits, P. Kostelnik, O. Dubay, G. Kresse, J. Gustafson, E. Lundgren, J. N. Andersen, H. Dosch and P. Varga, *Phys. Rev. Lett.*, 2006, **96**, 146102.
- 27 J. Schnadt, J. Knudsen, X. L. Hu, A. Michaelides, R. T. Vang, K. Reuter, Z. Li, E. Lægsgaard, M. Scheffler and F. Besenbacher, *Phys. Rev. B: Condens. Matter Mater. Phys.*, 2009, **80**, 075424.
- 28 H. Bluhm, M. Hävecker, A. Knop-Gericke, M. Kiskinova, R. Schlögl and M. Salmeron, *MRS Bull.*, 2007, **32**, 1022–1030.
- 29 H. Bluhm, M. Hävecker, A. Knop-Gericke, E. Kleimenov, R. Schlögl, D. Teschner, V. I. Bukhtiyarov, D. F. Ogletree and M. Salmeron, *J. Phys. Chem. B*, 2004, **108**, 14340–14347.
- 30 A. Knop-Gericke, M. Hävecker, T. Schedel-Niedrig and R. Schlögl, *Top. Catal.*, 2000, **10**, 187–198.
- 31 A. Michaelides, M.-L. Bocquet, P. Sautet, A. Alavi and D. King, *Chem. Phys. Lett.*, 2003, **367**, 344–350.
- 32 A. Michaelides, K. Reuter and M. Scheffler, *J. Vac. Sci. Technol., A*, 2005, **23**, 1487–1497.



- 33 S. Linic and M. A. Barteau, *J. Am. Chem. Soc.*, 2002, **124**, 310–317.
- 34 S. Linic and M. A. Barteau, *J. Am. Chem. Soc.*, 2003, **125**, 4034–4035.
- 35 M. Ozbek, I. Onal and R. Santen, *Top. Catal.*, 2012, **55**, 710–717.
- 36 M.-L. Bocquet, A. Michaelides, D. Loffreda, P. Sautet, A. Alavi and D. A. King, *J. Am. Chem. Soc.*, 2003, **125**, 5620–5621.
- 37 M.-L. Bocquet and D. Loffreda, *J. Am. Chem. Soc.*, 2005, **127**, 17207–17215.
- 38 W. Gao, M. Zhao and Q. Jiang, *J. Phys. Chem. C*, 2007, **111**, 4042–4046.
- 39 M. O. Ozbek, I. Onal and R. A. V. Santen, *J. Phys.: Condens. Matter*, 2011, **23**, 404202.
- 40 M. O. Ozbek, I. Onal and R. A. vanâ Santen, *ChemCatChem*, 2011, **3**, 150–153.
- 41 M. Ozbek, I. Onal and R. van Santen, *J. Catal.*, 2011, **284**, 230–235.
- 42 Y. Xu, J. Greeley and M. Mavrikakis, *J. Am. Chem. Soc.*, 2005, **127**, 12823–12827.
- 43 A. Kokalj, P. Gava, S. de Gironcoli and S. Baroni, *J. Phys. Chem. C*, 2008, **112**, 1019–1027.
- 44 J. Greeley and M. Mavrikakis, *J. Phys. Chem. C*, 2007, **111**, 7992–7999.
- 45 A. Larrabee and R. Kuczowski, *J. Catal.*, 1978, **52**, 72–80.
- 46 H. Kanoh, T. Nishimura and A. Ayame, *J. Catal.*, 1979, **57**, 372–379.
- 47 C. T. Campbell, *J. Catal.*, 1986, **99**, 28–38.
- 48 D. E. Starr, Z. Liu, M. Havecker, A. Knop-Gericke and H. Bluhm, *Chem. Soc. Rev.*, 2013, **42**, 5833–5857.
- 49 Y. Ma, C. T. Chen, G. Meigs, K. Randall and F. Sette, *Phys. Rev. A: At., Mol., Opt. Phys.*, 1991, **44**, 1848–1858.
- 50 J. Yeh and I. Lindau, *At. Data Nucl. Data Tables*, 1985, **32**, 1–155.
- 51 D. R. Penn, *Phys. Rev. B: Condens. Matter Mater. Phys.*, 1987, **35**, 482–486.
- 52 S. Tanuma, C. J. Powell and D. R. Penn, *Surf. Interface Anal.*, 1991, **17**, 911–926.
- 53 P. Giannozzi, S. Baroni, N. Bonini, M. Calandra, R. Car, C. Cavazzoni, D. Ceresoli, G. L. Chiarotti, M. Cococcioni, I. Dabo, A. Dal Corso, S. de Gironcoli, S. Fabris, G. Fratesi, R. Gebauer, U. Gerstmann, C. Gougoussis, A. Kokalj, M. Lazzeri, L. Martin-Samos, N. Marzari, F. Mauri, R. Mazzarello, S. Paolini, A. Pasquarello, L. Paulatto, C. Sbraccia, S. Scandolo, G. Sclauzero, A. P. Seitsonen, A. Smogunov, P. Umari and R. M. Wentzcovitch, *J. Phys.: Condens. Matter*, 2009, **21**, 395502.
- 54 J. P. Perdew, K. Burke and M. Ernzerhof, *Phys. Rev. Lett.*, 1996, **77**, 3865–3868.
- 55 Original QE PP library, 2008, [http://www.quantum-espresso.org/wp-content/uploads/upf\\_files/O.pbe-van\\_gipaw.UPF](http://www.quantum-espresso.org/wp-content/uploads/upf_files/O.pbe-van_gipaw.UPF).
- 56 Original QE PP library, 2008, [http://www.quantum-espresso.org/wp-content/uploads/upf\\_files/O.star1s-pbe-van\\_gipaw.UPF](http://www.quantum-espresso.org/wp-content/uploads/upf_files/O.star1s-pbe-van_gipaw.UPF).
- 57 PS Library, 2012, [http://www.quantum-espresso.org/wp-content/uploads/upf\\_files/Ag.pbe-dn-rrkjus\\_psl.0.1.UPF](http://www.quantum-espresso.org/wp-content/uploads/upf_files/Ag.pbe-dn-rrkjus_psl.0.1.UPF).
- 58 H. J. Monkhorst and J. D. Pack, *Phys. Rev. B: Solid State*, 1976, **13**, 5188–5192.
- 59 N. Marzari, D. Vanderbilt, A. De Vita and M. C. Payne, *Phys. Rev. Lett.*, 1999, **82**, 3296–3299.
- 60 Y. Kunisada, H. Nakanishi, W. A. D. no and H. Kasai, *J. Phys.: Conf. Ser.*, 2012, **379**, 012013.
- 61 E. Pehlke and M. Scheffler, *Phys. Rev. Lett.*, 1993, **71**, 2338–2341.
- 62 S. Lizzit, A. Baraldi, A. Groso, K. Reuter, M. V. Ganduglia-Pirovano, C. Stampfl, M. Scheffler, M. Stichler, C. Keller, W. Wurth and D. Menzel, *Phys. Rev. B: Condens. Matter Mater. Phys.*, 2001, **63**, 205419.
- 63 L. Köhler and G. Kresse, *Phys. Rev. B: Condens. Matter Mater. Phys.*, 2004, **70**, 165405.
- 64 C. E. Patrick and F. Giustino, *Phys. Rev. B: Condens. Matter Mater. Phys.*, 2011, **84**, 085330.
- 65 S. García-Gil, A. García and P. Ordejón, *Eur. Phys. J. B*, 2012, **85**, 1–10.
- 66 D. Prendergast and G. Galli, *Phys. Rev. Lett.*, 2006, **96**, 215502.
- 67 G. B. Hoflund, Z. F. Hazos and G. N. Salaita, *Phys. Rev. B: Condens. Matter Mater. Phys.*, 2000, **62**, 11126–11133.
- 68 R. Masse, J. C. Guitel and A. Durif, *Acta Crystallogr., Sect. B: Struct. Crystallogr. Cryst. Chem.*, 1979, **35**, 1428–1429.
- 69 V. K. Kaushik, *J. Electron. Spectrosc. Relat. Phenom.*, 1991, **56**, 273–277.
- 70 C. T. Au, S. Singh-Boparai, M. W. Roberts and R. J. Joyner, *J. Chem. Soc., Faraday Trans.*, 1983, **79**, 1779.
- 71 J. Knudsen, N. M. Martin, E. Grånäs, S. Blomberg, J. Gustafson, J. N. Andersen, E. Lundgren, S. Klacar, A. Hellman and H. Grönbeck, *Phys. Rev. B: Condens. Matter Mater. Phys.*, 2011, **84**, 115430.
- 72 H. Grönbeck, S. Klacar, N. M. Martin, A. Hellman, E. Lundgren and J. N. Andersen, *Phys. Rev. B: Condens. Matter Mater. Phys.*, 2012, **85**, 115445.
- 73 C. Brouder, *J. Phys.: Condens. Matter*, 1990, **2**, 701–738.
- 74 C. Gougoussis, M. Calandra, A. P. Seitsonen and F. Mauri, *Phys. Rev. B: Condens. Matter Mater. Phys.*, 2009, **80**, 075102.
- 75 M. Taillefumier, D. Cabaret, A.-M. Flank and F. Mauri, *Phys. Rev. B: Condens. Matter Mater. Phys.*, 2002, **66**, 195107.
- 76 O. Bunău and M. Calandra, *Phys. Rev. B: Condens. Matter Mater. Phys.*, 2013, **87**, 205105.
- 77 V. Mauchamp, M. Jaouen and P. Schattschneider, *Phys. Rev. B: Condens. Matter Mater. Phys.*, 2009, **79**, 235106.
- 78 P. J. W. Weijs, M. T. Czyżyk, J. F. van Acker, W. Speier, J. B. Goedkoop, H. van Leuken, H. J. M. Hendrix, R. A. de Groot, G. van der Laan, K. H. J. Buschow, G. Wiech and J. C. Fuggle, *Phys. Rev. B: Condens. Matter Mater. Phys.*, 1990, **41**, 11899–11910.
- 79 D. Marel, G. Sawatzky, R. Zeller, F. Hillebrecht and J. Fuggle, *Solid State Commun.*, 1984, **50**, 47–50.
- 80 C. Brouder, M. Alouani and K. H. Bennemann, *Phys. Rev. B: Condens. Matter Mater. Phys.*, 1996, **54**, 7334–7349.
- 81 A. Menzel, S. Benzaid, M. O. Krause, C. D. Caldwell and U. Hergenhahn and M. Bissen, *Phys. Rev. A: At., Mol., Opt. Phys.*, 1996, **54**, R991–R994.





- 82 C. Hébert, M. Willinger, D. Su, P. Pongratz, P. Schattschneider and R. Schlögl, *Eur. Phys. J. B*, 2002, **28**, 407–414.
- 83 K. Reuter and M. Scheffler, *Phys. Rev. B: Condens. Matter Mater. Phys.*, 2001, **65**, 035406.
- 84 M. Fronzi, S. Piccinin, B. Delley, E. Traversa and C. Stampfl, *Phys. Chem. Chem. Phys.*, 2009, **11**, 9188–9199.
- 85 M. J. Chase, C. A. Davies, J. R. J. Downey, D. J. Frurip, R. A. McDonald and A. N. Syverud, NIST JANAF Thermochemical Tables, 1985, <http://kinetics.nist.gov/janaf/>.
- 86 H. Engelhardt and D. Menzel, *Surf. Sci.*, 1976, **57**, 591–618.
- 87 M. Pascal, C. Lamont, P. Baumgärtel, R. Terborg, J. Hoeft, O. Schaff, M. Polcik, A. Bradshaw, R. Toomes and D. Woodruff, *Surf. Sci.*, 2000, **464**, 83–90.
- 88 L. Yang, T. S. Rahman, G. Bracco and R. Tatarek, *Phys. Rev. B: Condens. Matter Mater. Phys.*, 1989, **40**, 12271–12279.
- 89 W. W. Pai and J. E. Reutt-Robey, *Phys. Rev. B: Condens. Matter Mater. Phys.*, 1996, **53**, 15997–16005.
- 90 G. Bracco and R. Tatarek, *Surf. Sci.*, 1983, **251**, 498–502.
- 91 M. Taniguchi, K. Tanaka, T. Hashizume and T. Sakurai, *Surf. Sci.*, 1992, **262**, L123–L128.
- 92 *Phase Transitions and Adsorbate Restructuring at Metal Surface*, ed. D. A. King and D. P. Woodruff, Elsevier Science B. V., Amsterdam, 1994, vol. 7.
- 93 G. Dorenbos and D. Boerma, *Surf. Sci.*, 1993, **287**, 443–447.
- 94 R. Feidenhans'l, F. Grey, M. Nielsen, F. Besenbacher, F. Jensen, E. Laegsgaard, I. Stensgaard, K. W. Jacobsen, J. K. Nørskov and R. L. Johnson, *Phys. Rev. Lett.*, 1990, **65**, 2027–2030.
- 95 G. Dorenbos, M. Breeman and D. O. Boerma, *Phys. Rev. B: Condens. Matter Mater. Phys.*, 1993, **47**, 1580–1588.
- 96 R. Feidenhans'l, F. Grey, R. L. Johnson and M. Nielsen, *Phys. Rev. B: Condens. Matter Mater. Phys.*, 1991, **44**, 1875–1879.
- 97 X. Duan, O. Warschkow, A. Soon, B. Delley and C. Stampfl, *Phys. Rev. B: Condens. Matter Mater. Phys.*, 2010, **81**, 075430.
- 98 C. Stegelmann, N. Schilodt, C. Campbell and P. Stoltze, *J. Catal.*, 2004, **221**, 630–649.
- 99 M. Ohta, K. Watanabe and Y. Matsumoto, *J. Phys. Chem. B*, 2001, **105**, 8170–8177.
- 100 A. Knop-Gericke, M. Hävecker, T. Schedel-Niedrig and R. Schlögl, *Top. Catal.*, 2000, **10**, 187–198.
- 101 M. Pedio, J. C. Fuggle, J. Somers, E. Umbach, J. Haase, T. Lindner, U. Höfer, M. Grioni, F. M. F. de Groot, B. Hillert, L. Becker and A. Robinson, *Phys. Rev. B: Condens. Matter Mater. Phys.*, 1989, **40**, 7924–7927.
- 102 F. M. F. de Groot, M. Grioni, J. C. Fuggle, J. Ghijsen, G. A. Sawatzky and H. Petersen, *Phys. Rev. B: Condens. Matter Mater. Phys.*, 1989, **40**, 5715–5723.
- 103 F. De Groot, *Chem. Rev.*, 2001, **101**, 1779–1808.
- 104 D. A. Outka and J. Stöhr, *J. Chem. Phys.*, 1988, **88**, 3539–3554.
- 105 C. Stampfl, *Catal. Today*, 2005, **105**, 17–35.
- 106 C. T. Campbell, *Phys. Rev. Lett.*, 2006, **96**, 066106.
- 107 K. H. Stern, *High Temperature Properties and Thermal Decomposition of Inorganic Salts with Oxyanions*, CRC Press LLC, Boca Raton, 2001.
- 108 X. Bao, M. Muhler, T. Schedel-Niedrig and R. Schlögl, *Phys. Rev. B: Condens. Matter Mater. Phys.*, 1996, **54**, 2249–2262.
- 109 A. Nagy, G. Mestl, D. Herein, G. Weinberg, E. Kitzelmann and R. Schlögl, *J. Catal.*, 1999, **182**, 417–429.
- 110 G. I. N. Waterhouse, G. A. Bowmaker and J. B. Metson, *Appl. Catal., A*, 2004, **265**, 85–101.
- 111 C. T. Campbell, *J. Catal.*, 1985, **94**, 436–444.
- 112 G. Rovida, F. Pratesi, M. Maglietta and E. Ferroni, *J. Vac. Sci. Technol., A*, 1972, **9**, 796–799.
- 113 C. I. Carlisle, D. A. King, M.-L. Bocquet, J. Cerdá and P. Sautet, *Phys. Rev. Lett.*, 2000, **84**, 3899–3902.
- 114 C. Carlisle, T. Fujimoto, W. Sim and D. King, *Surf. Sci.*, 2000, **470**, 15–31.
- 115 S. R. Bare, K. Griffiths, W. Lennard and H. Tang, *Surf. Sci.*, 1995, **342**, 185–198.
- 116 A. Raukema, D. A. Butler, F. M. Box and A. W. Kleyn, *Surf. Sci.*, 1996, **347**, 151–168.
- 117 X. Bao, M. Muhler, B. Pettinger, R. Schlögl and G. Ertl, *Catal. Lett.*, 1993, **22**, 215–225.
- 118 M. Gajdos, A. Eichler and J. Hafner, *Surf. Sci.*, 2003, **531**, 272–286.
- 119 H. Schubert, U. Tegtmeier, D. Herein, X. Bao, M. Muhler and R. Schlögl, *Catal. Lett.*, 1995, **33**, 305–319.
- 120 D. S. Su, T. Jacob, T. W. Hansen, D. Wang, R. Schlögl and B. Freitag and S. Kujawa, *Angew. Chem., Int. Ed.*, 2008, **47**, 5005–5008.
- 121 R. A. Outlaw, S. N. Sankaran, G. B. Hoflund and M. R. Davidson, *J. Mater. Res.*, 1988, **3**, 1378–1384.
- 122 T. E. Jones, T. C. R. Rocha, A. Knop-Gericke, C. Stampfl, R. Schlögl and S. Piccinin, *Phys. Chem. Chem. Phys.*, 2014, **16**, 9002–9014.
- 123 G. Mathieu, P. Gas, A. Combe-Brun and J. Bernardini, *Acta Metall.*, 1983, **31**, 1661–1667.
- 124 J.-P. Crocombette, H. de Monestrol and F. Willaime, *Phys. Rev. B: Condens. Matter Mater. Phys.*, 2002, **66**, 024114.
- 125 C. Rehren, X. B. M. Muhler, R. Schlögl and G. Ertl, *Z. Phys. Chem.*, 1991, **174**, 11–52.
- 126 A. Barg, E. Rabkin and W. Gust, *Acta Metall. Mater.*, 1995, **43**, 4067–4074.
- 127 J. P. Allen, D. O. Scanlon and G. W. Watson, *Phys. Rev. B: Condens. Matter Mater. Phys.*, 2011, **84**, 115141.
- 128 A. Deb and A. K. Chatterjee, *J. Phys.: Condens. Matter*, 1998, **10**, 11719.
- 129 L. H. Tjeng, M. B. J. Meinders, J. van Elp, J. Ghijsen, G. A. Sawatzky and R. L. Johnson, *Phys. Rev. B: Condens. Matter Mater. Phys.*, 1990, **41**, 3190–3199.
- 130 P. Norby, R. Dinnebier and A. N. Fitch, *Inorg. Chem.*, 2002, **41**, 3628–3637.
- 131 R. W. G. Wyckoff, *Crystal Structures*, Wiley, New York, 1964.
- 132 A. F. Wells, *Structural Inorganic Chemistry*, Clarendon Press, Oxford, 1984.
- 133 M. Grioni, J. F. van Acker, M. T. Czyżyk and J. C. Fuggle, *Phys. Rev. B: Condens. Matter Mater. Phys.*, 1992, **45**, 3309–3318.
- 134 R. F. W. Bader, *Atoms in Molecules. A Quantum Theory*, Clarendon Press, Oxford, 1990.

