

TECHNICAL NOTE

Cite this: *Anal. Methods*, 2014, 6, 8817

A direct enzyme-linked immunosorbent assay (ELISA) for the quantitative evaluation of Janus Kinase 3 (JAK3) inhibitors

Silke M. Bauer, Matthias Gehringer and Stefan A. Laufer*

The availability of a robust, precise and cost-efficient test system is the prerequisite for the performance of any medicinal chemistry program, especially in an academic environment. For the identification of novel Janus Kinase 3 inhibitors and determination of structure–activity relationships, a direct enzyme-linked immunosorbent assay was developed. Being applicable in a standard laboratory, the main advantage over existing methods is the basic equipment requirement as this assay does not need special handling originating from the use of cell cultures or radiometric readout. In contrast to earlier methods relying on two-step procedures, our assay uses a single peroxidase conjugated antibody to quantify and detect substrate phosphorylation. This optimized assay features a limit of detection of $0.032 \mu\text{g mL}^{-1}$, a wide dynamic range of 0.638 OD units and an appropriate Z' factor of 0.66. The determined IC_{50} value for Tofacitinib was $3.5 \pm 0.6 \text{ nM}$ ($n = 18$). A detailed assay protocol custom-tailored for the JAK3 kinase domain and a step-by-step manual for optimizing specific assay conditions are presented. This ELISA primarily addresses researchers within the academic setting facing the task to identify lead structures and explore structure–activity relationships of JAK3 inhibitors at reasonable costs.

Received 4th July 2014
Accepted 4th August 2014

DOI: 10.1039/c4ay01589d

www.rsc.org/methods

Introduction

Janus kinases (JAKs) are a group of non-receptor tyrosine kinases playing a fundamental role in the immune system, hematopoiesis and interferon signaling. Consequently, the four JAK family members JAK 1,2,3 and Tyrosine Kinase 2 are highly attractive targets for treatment of inflammatory and oncological disorders.^{1–3}

Several inhibitors of JAK1 and/or JAK2 as well as pan-JAK inhibitors are currently under clinical investigation for treatment of inflammatory disorders like rheumatoid arthritis (RA) and autoimmune diseases such as Crohn's disease and psoriasis. Recently, the pan-JAK inhibitor Tofacitinib has been approved by the US Food and Drug Administration (FDA) for its application in patients with severe RA inadequately responding to methotrexate.⁴ However, the European Medicines Agency (EMA) refused the marketing authorization of Tofacitinib in 2013 due to an increased risk for the occurrence of serious infections among other severe side effects.⁵

In contrast to the other JAK family members, the expression of JAK3 is restricted to the hematopoietic tissue where it exclusively associates with cytokine receptors bearing the common gamma-chain (γ_c) subunit, enabling JAK3 to

specifically operate in immune cells. Consequently, JAK3 represents an attractive target for immunosuppression with limited side effects. Nevertheless, no selective JAK3 inhibitor is available for therapy so far and there is a lack of sufficiently characterized compounds with a distinct selectivity profile. Despite its poor selectivity within the JAK family Knapp *et al.* suggested the pan-JAK inhibitor Tofacitinib as a high-quality chemical probe for JAK3.⁶ To evaluate the JAK3 activity of our Tofacitinib-derived compound library,⁷ we modified, adapted and optimized a general enzyme-linked immunosorbent assay (ELISA) for the detection of protein tyrosine kinase activity previously established by Lázaro *et al.*⁸ Earlier published non-cellular JAK3 assays were based on radiometric formats or depended on multi-step procedures using expensive reagents. In contrast, our protocol is operationally simple, robust, and performable at a low cost making it a useful tool for routine screening of JAK3 inhibitors, especially in an academic environment. The ELISA reported herein allows the determination of inhibitory potencies in the low nanomolar range and the IC_{50} values obtained were subsequently confirmed by commercial radiometric and cellular assays. As a result of our research in this area, we recently described a new class of highly potent tricyclic JAK inhibitors with superior selectivity compared to Tofacitinib.⁹

In the general assay procedure reported by Lázaro *et al.*, an artificial synthetic polypeptide consisting of L-glutamic acid and L-tyrosine in random distribution with a molar ratio of 4 : 1 of glutamic acid to tyrosine is adsorbed to the wells of the assay

Department of Pharmaceutical and Medicinal Chemistry, Institute of Pharmaceutical Sciences, Eberhard Karls University of Tuebingen, D-72076 Tuebingen, Germany.
E-mail: stefan.laufer@uni-tuebingen.de; Fax: +49-7071-295037; Tel: +49-7071-2978788

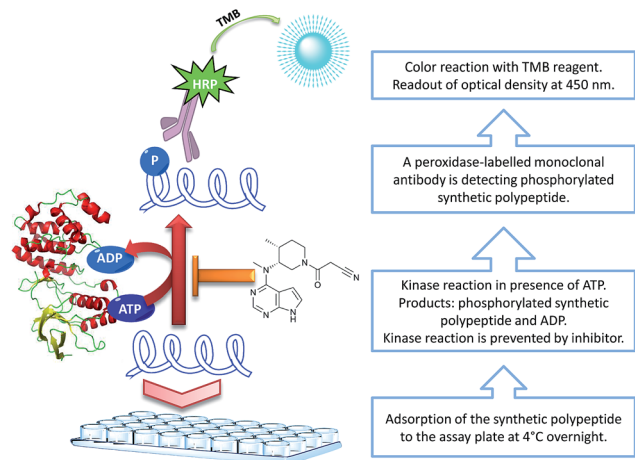


Fig. 1 Schematic workflow of the established direct JAK3 ELISA.

plate. In the presence of tyrosine kinase and ATP, the synthetic polypeptide is phosphorylated on its tyrosine residues while ADP is generated. The amount of the phosphorylated kinase substrate directly correlates with kinase activity. The comparison of the maximum phosphorylation level with the phosphorylation degree achieved when the JAK3 kinase reaction is carried out in the presence of different inhibitor concentrations allows the determination of IC_{50} values.

For detection, Lázaro's protocol applies a two-step procedure. As a primary antibody, a monoclonal mouse anti-phosphotyrosine antibody is used while a goat anti-mouse immunoglobulin G (IgG) antibody labeled with peroxidase serves as a secondary antibody. This method requires two incubation steps, one for each antibody reaction. In contrast, our novel protocol uses a single monoclonal anti-phosphotyrosine antibody conjugated with peroxidase for directly detecting the degree of phosphorylation of the synthetic polypeptide, as illustrated in Fig. 1.

Experimental

Materials and methods

Reagents and labware. All reagents were of ultra-pure grade except as noted otherwise. If not described differently, all pipetting was carried out using Eppendorf Reference® pipets in combination with the respective size of Eppendorf epT.I.P.S. Standard®. The monoclonal anti-phosphotyrosine-peroxidase conjugated antibody (Catalog # A5964), the synthetic polypeptide serving as the kinase substrate (Catalog #P0275), globulin free bovine serum albumin (BSA) (Catalog # A3059), DL-dithiothreitol (Catalog #D9779), adenosine-5'-triphosphate disodium salt hydrate (ATP) (Catalog # A2383) and sodium orthovanadate (Na_3VO_4) (Catalog #S6508) were all obtained from Sigma-Aldrich GmbH, Germany. The active JAK3 kinase domain (amino acids 781 to 1124) was purchased from Abcam, England (Catalog # ab89982). As additional ingredients of the kinase buffer, 2-[4-(2-hydroxyethyl)piperazin-1-yl]ethanesulfonic acid (HEPES) (Catalog #L1613) was obtained from Biochrom GmbH, Germany and $MgCl_2 \times 6H_2O$ (Catalog

#105833) was purchased from Merck KGA, Germany. Ultra-pure water produced with an ELGA PURELAB Ultra Mk2 Genetic water purification device was used throughout the work. The 3,3',5,5'-tetramethylbenzidine (TMB) peroxidase reagent set (Catalog #555214) was obtained from BD Biosciences Europe. Nunc MaxiSorp® microtiter plates (flat bottom, 96 wells) (Catalog #442404) were purchased from Fisher Scientific GmbH, Germany. Compound 1, 2 and the enantiopure reference Tofacitinib were prepared by modified literature procedures in our laboratory.⁷ Incubation was carried out in a Heidolph Titramax 1000 shaking device combined with a Heidolph Incubator 1000, Heidolph Instruments GmbH & Co. KG, Germany. An Emax Precision-Microplate-Reader from Molecular Devices GmbH, Ismaning, Germany equipped using SOFTmax® PRO software from Molecular Devices GmbH, Ismaning, Germany was used for readout.

Determination of the Z' factor and dynamic range

The Z' factor was calculated according to the general equation

$$Z' = 1 - \frac{3(\sigma p + \sigma n)}{\mu p - \mu n}$$

The dynamic range is expressed by the term $[\mu p - \mu n]$.¹⁰

The variables of the equation refer to the following abbreviations: p : OD_{450} of positive control, n : OD_{450} of negative control, σ : standard deviation of OD_{450} , and μ : mean of OD_{450} .

Determination of the limit of detection (LOD)

A calibration curve of the phosphorylated polypeptide was established and detection was carried out according to the conditions described in the general assay procedure. The LOD was assessed by linear regression of the calibration curve applying the following equation:¹¹

$$LOD = \frac{3\sigma}{S}$$

The following abbreviations are used for the variables of the equation: σ : standard deviation of the response and S : slope of the calibration curve.

Calculation of the percentage of inhibition

The percentage of inhibition is calculated according to the following equation:

$$\text{Inhibition}[\%] = 100 - \left(\frac{OD_{450}\text{Sample} - OD_{450}\text{NSB}}{OD_{450}\text{STIM} - OD_{450}\text{NSB}} \right) \times 100$$

$OD_{450}\text{STIM}$: the optical density at 450 nm for the positive control (STIM); $OD_{450}\text{Sample}$: the optical density at 450 nm for the kinase reaction in the presence of a test compound in the respective dilution; $OD_{450}\text{NSB}$: the optical density at 450 nm for nonspecific binding (NSB).



Adaption and optimization of the assay settings

To determine the optimal amount of the kinase substrate, a concentration row was prepared by dissolving the synthetic polypeptide in PBS. 100 μL of coating solution containing concentrations from 100 $\mu\text{g mL}^{-1}$ to 0.625 $\mu\text{g mL}^{-1}$ of the synthetic polypeptide were added to the wells of the assay plate. The plate was covered with a lid and coated overnight at 4 $^{\circ}\text{C}$. After the coating step, a kinase buffer (KB) with an ATP concentration of 100 μM was prepared. After one hour of incubation with pure KB and KB containing 60 ng mL^{-1} JAK3 kinase and the subsequent antibody incubation step (dilution factor 1 : 60 000), optical densities (OD) of the nonspecific binding (NSB) signal and the maximum signal were detected at 450 nm (OD_{450}). For titration of the enzyme concentration, increasing amounts of JAK3 kinase (15 ng mL^{-1} to 3840 ng mL^{-1}) were used while the ATP concentration of the KB was kept constant at 100 μM . The subsequent procedure was performed as described above for the determination of the kinase substrate concentration. For evaluating the dilution factor of the monoclonal peroxidase-labelled anti-phosphotyrosine antibody, the wells of the assay plate were coated with a 5 $\mu\text{g mL}^{-1}$ kinase substrate overnight at 4 $^{\circ}\text{C}$. Pure KB with an ATP concentration of 1.4 μM was incubated as the negative control for the detection of the NSB signal. For determination of the positive control indicating the maximum signal, a KB containing 1.4 μM ATP and 60 ng mL^{-1} of JAK3 kinase was employed. A dilution row with increasing amounts of the peroxidase-labelled anti-phosphotyrosine antibody was prepared in blocking buffer (BB: 0.1% Tween 20 and 0.25% bovine serum albumin in PBS) which had been adjusted to pH 6.5. 100 μL of the respective antibody dilution were added to the respective wells for both, positive and negative control, and incubated for one hour. The K_{m} value (Michaelis constant) for ATP was measured after coating the assay plate using 100 $\mu\text{g mL}^{-1}$ of the polypeptidic kinase substrate. The kinase reaction was carried out at a kinase concentration of 60 ng mL^{-1} while varying the ATP concentrations from 0.1 μM to 1000 μM , maintaining the assay procedure as described above.

Results and discussion

General assay procedure

Prior to performing the assay, 10 mM stock solutions of samples and the reference compound Tofacitinib were prepared in dimethyl sulfoxide (DMSO). The polypeptidic kinase substrate was dissolved in PBS to obtain a final concentration of 5 $\mu\text{g mL}^{-1}$. 100 μL of this solution were added into all wells of the assay plate with an Eppendorf Multipipette® plus equipped with a 5 mL Eppendorf Combitip plus®. The plate was closed with a lid and stored overnight at 4 $^{\circ}\text{C}$ for adsorption of the polypeptidic kinase substrate to its surface.

A KB containing 100 mM HEPES, 10 mM MgCl_2 , 4 mM dithiothreitol, 0.1 mM Na_3VO_4 , and 1.4 μM ATP was prepared in ultra-pure water and the pH was adjusted to 6.8–6.9 by dropwise addition of 1 M HCl. This KB solution served as a medium for both, preparation of the JAK3 enzyme solution and dilution of

test compounds/reference. The enzyme solution contained a final concentration of 60 ng mL^{-1} of JAK3. This enzyme solution was apportioned into Eppendorf reaction tubes in an ice-cooled rack. Dilution of the compounds was carried out in a two-step procedure. First, the 10 mM stock solutions of samples/reference were serially diluted in KB to a 100-fold excess of the final assay concentration *via* 10-fold dilution steps. As a second step of the dilution procedure, the respective volume of the 100-fold pre-dilutions was added to the JAK3 enzyme solution in Eppendorf reaction tubes. Thereby, final assay concentrations of samples and Tofacitinib were obtained.

It must be pointed out that vortexing of solutions containing JAK3 should be performed gently and only for few seconds as it significantly reduces the kinase activity leading to very shallow and non-sigmoid shaped inhibition curves.

Subsequently, all wells of the assay plate were rinsed three times with a PBS-containing wash bottle. Prior to the kinase reaction step, the remaining free binding sites were blocked by treatment with BB for 12 minutes at room temperature. After completion of the blocking step, the BB was discarded and the plate was rinsed three times with PBS containing 0.1% Tween-20 (polyoxyethylene (20) sorbitan monolaurate) (PBST) using a wash bottle. For draining, the plate was left upside down for 5 minutes on an absorptive surface. Potentially existing air bubbles originating from the washing step were removed by patting the assay plate carefully on a soft and absorptive surface. For the kinase reaction, 50 μL of the diluted samples and Tofacitinib were transferred from the Eppendorf reaction tubes to the corresponding wells of the assay plate. For positive control (STIM), indicating maximum phosphorylation, 50 μL of JAK3 solution were pipetted into the respective wells. For determination of NSB, 50 μL of plain KB were added into the respective wells. The pipetting of the kinase containing testing solutions to the assay plate was performed carefully but as quickly as possible (max. 5 minutes) since the degree of phosphorylation and therefore the detected kinase activity is time-dependent. During the kinase reaction, the plate was covered with a lid and incubated for one hour at 37 $^{\circ}\text{C}$, gently shaking at 150 rounds per minute in the incubator. After the kinase reaction, the content of the plate was discarded. The plate was washed three times with PBST, drained and patted following the same procedure as described before.

While the plate was draining, the monoclonal anti-phosphotyrosine–peroxidase conjugated antibody was diluted 1 : 60 000 in BB which has been adjusted to pH 6.5. 100 μL of the antibody dilution were pipetted into all wells using an Eppendorf Multipipette® plus equipped with a 5 mL Eppendorf Combitip plus®. For incubation of the antibody reaction, the plate was again covered with a lid and incubated as described for the kinase reaction step.

After the last mentioned incubation, the antibody solution was discarded and the assay plate was rinsed with PBST to remove any unbound antibody. The plate was again drained upside down on an absorptive surface and patted as described before.

Finally, 50 μL of the TMB substrate reagent were added into all wells using an Eppendorf Multipipette® plus equipped with a



2.5 mL Eppendorf Combitip plus® and left for 5 minutes in the dark while a blue color developed. The color reaction was stopped by pipetting 25 μL of 1 M sulphuric acid into each well using the afore-mentioned pipette leading to a color change from blue to yellow. The OD was read out in an ELISA micro-plate reader at 450 nm.

Adaption and optimization of the assay settings

The general protocol published by Lázaro *et al.* for the detection of protein tyrosine kinase activity was adapted to the specific requirements of the JAK3 kinase domain. As illustrated in the schematic ELISA procedure (Fig. 1), two kinase substrates, namely ATP and the synthetic polypeptide, are involved in the kinase reaction of this ELISA. Copeland *et al.* defined this kind of mechanism as a bisubstrate enzyme reaction.¹² We could confirm the above-mentioned polypeptide to be a suitable substrate for this kind of kinase activity assay as it is recognized and sufficiently phosphorylated by JAK3. When defining conditions for kinase activity assays based on a bisubstrate reaction, the apparent K_m value for one substrate needs to be determined at the saturation concentration of the other substrate.¹² As the assay will be carried out at the K_m value of ATP, the amount of polypeptidic kinase substrate adsorbed to the assay plate must be kept at the saturation concentration to avoid a limitation of potential phosphorylation sites. Consequently, a decreased signal magnitude will only be caused by a reduced kinase activity as a result of kinase inhibition by the kinase inhibitor. In contrast, the ATP concentration was kept at 100 μM for the determination of the required synthetic polypeptide concentration, to guarantee saturation of this substrate component. This time, the concentration of the polypeptide adsorbed to the assay plate was varied from 0.63 $\mu\text{g mL}^{-1}$ to 100 $\mu\text{g mL}^{-1}$. The signal magnitude measured using a 5 $\mu\text{g mL}^{-1}$ polypeptidic kinase substrate was comparable to signal responses obtained with 10 $\mu\text{g mL}^{-1}$ or 100 $\mu\text{g mL}^{-1}$ of the afore-mentioned substrate (Fig. 2A). Thus, a concentration of 5 $\mu\text{g mL}^{-1}$ of the synthetic polypeptide was considered as sufficient. In order to ascertain both, the optimal kinase concentration and the sensitivity of this ELISA method, the linearity of the relationship between signal and kinase concentration was determined. Concentrations between 15 ng mL^{-1} and 3840 ng mL^{-1} of JAK3 were incubated at an ATP concentration of 100 μM , to rule out that the kinase activity and the obtained signal magnitude were limited by ATP-depletion. In Fig. 2C, the OD_{450} is plotted as a function of the kinase concentration. For JAK3 enzyme concentrations up to 60 ng mL^{-1} , the measured OD_{450} values are directly proportional to the applied kinase concentrations. Within this linear range, a decrease of kinase activity directly results in a proportional loss of the signal response. A further enhancement of JAK3 concentration does not result in a further proportional increase of analytical signal. Moreover, the employment of excessive kinase concentrations can diminish the sensitivity of such an assay system and thus disables the sufficient discrimination of small differences in inhibitory activity. A decrease of kinase activity by different inhibitor concentrations will not lead to a proportional reduction

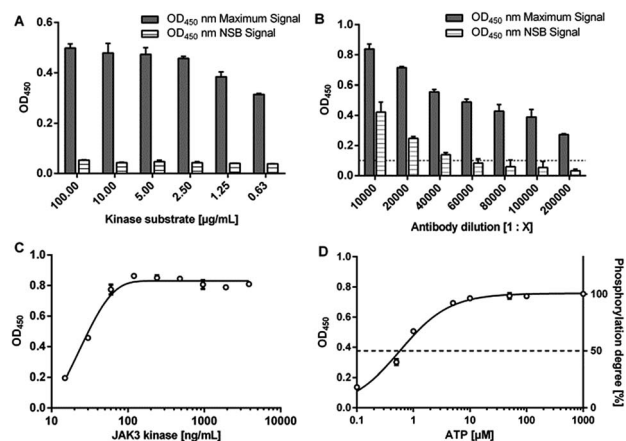


Fig. 2 (A) Saturation curve of the synthetic polypeptidic kinase substrate consisting of L-glutamic acid and L-tyrosine in a molar ratio of 4 : 1 after an overnight coating step at 4 °C. Different concentrations of the polypeptidic kinase substrate are plotted against the OD_{450} . The maximum signal represents the maximum signal achieved after incubation with JAK3 kinase and ATP. The NSB signal indicates the background noise in the absence of kinase. (B) Saturation curve of the monoclonal anti-phosphotyrosine peroxidase-conjugated antibody. Coating and kinase reaction for positive and negative controls were performed as described in the Experimental section. After the kinase reaction, increasing dilutions of the antibody were added to both wells for negative and positive controls for determination of maximum- and NSB signals followed by one hour of incubation. Antibody dilutions are plotted against the obtained OD_{450} for maximum- and NSB signals. (C) Determination of the optimal kinase concentration and the relationship between kinase concentration and resulting signal response. The assay procedure was performed as described in the Experimental section with an ATP concentration of 100 μM . (D) Hyperbolic relationship for the degree of substrate phosphorylation as a function of the ATP concentration. For determination of the apparent K_m value of this bisubstrate reaction, the polypeptidic kinase substrate was used in a concentration of 100 $\mu\text{g mL}^{-1}$ to ensure saturation. Different ATP concentrations were applied while all other parameters remained constant. Each data point is the arithmetic mean of at least three separate experiments \pm standard deviation.

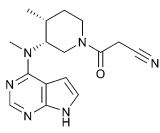
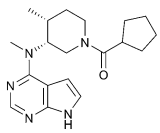
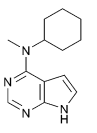
of the phosphorylation degree when applying excessive amounts of kinase. A linear regression of the optical densities corresponding to the respective kinase concentrations of the linear part of Fig. 2C was performed. The slope of the resulting regression line indicates the assay's sensitivity as a function of the kinase concentration. We determined a slope of 0.013 OD_{450} units per $\text{ng JAK3} \cdot \text{mL}$ and a coefficient of determination (R^2) of 0.982 proving the correlation between assay sensitivity and the kinase concentration. Since a concentration of 60 ng mL^{-1} JAK3 combines both, signal linearity and high signal magnitude, this concentration was considered as the optimal kinase concentration for this assay system.

The precision of this ELISA method employing a JAK3 concentration of 60 ng mL^{-1} was verified by a low standard deviation of 0.03 OD units.

In a subsequent step, the appropriate working dilution for the peroxidase-labelled monoclonal anti-phosphotyrosine antibody was investigated (Fig. 2B). Therefore, antibody dilutions were added to the wells with positive and negative controls to determine the respective maximum- and the NSB signal



Table 1 Determined IC₅₀ values and comparison with IC₅₀ values from a biochemical assay reported by Flanagan *et al.*¹⁴

			
	Tofacitinib	1	2
IC ₅₀ ± SD	3.5 ± 0.6 ^a	154 ± 0.04 ^b	311 ± 0.03 ^b
Literature IC ₅₀	1.0 ^c	39 ^c	160 ^c
Quotient IC ₅₀ /IC ₅₀ literature	3.5	3.9	1.9

^a Mean ± SD (*n* = 18). ^b Mean ± SD (*n* = 3). ^c No SD values were given.

magnitude. NSB is caused by binding of the antibody to the non-phosphorylated polypeptidic kinase substrate or other interferences. An OD₄₅₀ below 0.1 was considered appropriate. The best signal-to-noise ratio was achieved with an antibody dilution of 1 : 60 000.

The *K_m* value for ATP was determined by titrating ATP concentrations between 0.1 μM and 1000 μM while keeping all other assay parameters constant (Fig. 2D). The rate of reaction in the presence of a large excess of ATP (1000 μM) was considered maximal and consequently defined as the maximum degree of phosphorylation (100%). According to Copeland *et al.*, special care needs to be taken when setting substrate concentrations for enzymatic reactions involving more than one substrate in order to develop a balanced assay system.¹² As the assay is based on a bisubstrate enzyme reaction, the assay plate was coated using 100 μg mL⁻¹ of the synthetic polypeptide ensuring saturation conditions for determination of the apparent *K_m* value for ATP, which was found to be 0.7 μM. As reported in previous work of Goettert *et al.*, an ATP concentration of maximum twice the *K_m* value is acceptable and should not be exceeded.¹³ Applying 1.4 μM ATP (twice the *K_m* value) provided a good assay signal magnitude and assay stability on the one hand, and the necessary sensitivity for identification of ATP-competitive kinase inhibitors on the other hand.

The *Z'* factor is a common tool to evaluate the quality of an assay. According to Zhang *et al.*, an assay with a *Z'* factor between 0.5 and 1 is considered an excellent assay.¹⁰ A *Z'* factor of 0.66 confirmed this ELISA with its optimized settings as suitable for routine inhibitor screening. For further evaluation of the developed ELISA method, the LOD was determined according to the recommendations of the International Conference on Harmonisation of Technical Requirements for Registration of Pharmaceuticals for Human Use (ICH) by linear regression of a calibration curve (*R*² 0.997).¹¹ The analytical performance of the optimized assay settings was confirmed with an LOD of 0.032 μg mL⁻¹ phosphorylated polypeptidic kinase substrate and a dynamic range of 0.638 OD units.

Within the structural class of *N*-substituted 7*H*-pyrrolo[2,3-*d*]pyrimidines, Tofacitinib and two less potent inhibitors (1 and 2 in Table 1) described by Flanagan *et al.* were tested applying the optimized assay parameters. The resulting inhibition curves were steep and sigmoid-shaped. For the reference Tofacitinib

and compound 1/2, IC₅₀ values of 3.5 ± 0.6 nM (*n* = 18), 154 ± 0.04 nM (*n* = 3) and 311 ± 0.03 nM (*n* = 3) were obtained. These IC₅₀ values were compared with the IC₅₀ values previously reported by Flanagan *et al.*, even though it must be emphasized that direct comparison of IC₅₀ values determined in different assays is precarious.¹⁴ However, IC₅₀ values determined with our optimized ELISA correlate reasonably with those reported by Flanagan *et al.* (Table 1).

In summary, the ELISA protocol established by Lázaro *et al.* was transformed from an indirect to a direct format, as a second incubation step with a secondary detection antibody becomes redundant when the primary antibody is directly labelled with the detection enzyme. Moreover, potential cross reactivity arising from a secondary detection antibody that curtails the specificity of the ELISA response and therefore the accuracy of the readout data is avoided. Application of a single monoclonal detection antibody is less likely to cause interference with other than the target epitope. Apart from inter- and intra-assay signal consistency, non-specific signals are evaded and therefore the assay sensitivity and precision is improved.

Due to its sensitivity, this ELISA allows the investigation of SARs even within a series of structurally similar inhibitors.⁹

For exploration of selectivity, the extension to other members of the JAK family is conceivable in the same format. Furthermore, this assay protocol is suitable to be transferred to high-throughput screening campaigns using automated robotic instrumentation, making it applicable for the measurement of large numbers of samples at a time. Thus, it might also attract the attention of industrial researchers.

Conclusions

In the current report, we describe an optimized protocol for a direct JAK3 ELISA. Previously published non-cellular JAK3 assays apply radiometric formats or depend on multi-step procedures using expensive reagents or require special laboratory equipment. The advantages over existing protocols include easy performance, robustness, cost-efficiency and avoidance of radioisotopes. The assay is readily discriminating the effects of minor changes in the inhibitor structure on kinase inhibition and is thus suited for lead optimization. Essential instructions for successful establishment and handling of this ELISA are



reported in detail. Unlike the general method reported by Lázaro *et al.*, only one monoclonal anti-phosphotyrosine peroxidase conjugated antibody is required for detection, avoiding a second incubation time, cross reactivity and additional costs.

Abbreviations

ATP	Adenosine-5'-triphosphate
BB	Blocking buffer
BSA	Bovine serum albumin
DMSO	Dimethyl sulfoxide
EMA	European medicines agency
ELISA	Enzyme-linked immunosorbent assay
FDA	Food and drug administration
HEPES	(2-[4-(2-Hydroxyethyl)piperazin-1-yl]ethanesulfonic acid)
ICH	International conference on harmonisation of technical requirements for registration of pharmaceuticals for human use
IgG	Immunoglobulin G
JAK	Janus kinase
JAK3	Janus kinase 3
KB	Kinase buffer
K_m	Michaelis constant
LOD	Limit of detection
NSB	Nonspecific binding
OD	Optical density
OD ₄₅₀	Optical density at 450 nm
PBS	Phosphate-buffered saline
PBST	PBS containing 0.1% Tween-20
R^2	Coefficient of determination
RA	Rheumatoid arthritis
SARs	Structure-activity relationships
TMB	3,3',5,5'-Tetra-methylbenzidine
Tween-20	Polyoxyethylene (20) sorbitan monolaurate
γ_c	Common gamma chain interleukin receptor (IL-2RG)

Acknowledgements

The authors would like to thank L. Fischer and K. Bauer for successful laboratory co-work during the establishment of this assay. Special thanks to Jun.-Prof. Dr Pierre Koch and Peter Keck for their help, support and advice.

References

- 1 B. H. Kim, S. R. Oh, C. H. Yin, S. Lee, E. A. Kim, M. S. Kim, C. Sandoval, S. Jayabose, E. A. Bach, H. K. Lee and G. H. Baeg, *Br. J. Haematol.*, 2010, **148**, 132–143.
- 2 C. Haan, C. Rolvering, F. Raulf, M. Kapp, P. Druckes, G. Thoma, I. Behrmann and H. G. Zerwes, *Chem. Biol.*, 2011, **18**, 314–323.
- 3 M. Pesu, F. Candotti, M. Husa, S. R. Hofmann, L. D. Notarangelo and J. J. O'Shea, *Immunol. Rev.*, 2005, **203**, 127–142.
- 4 J. J. O'Shea, A. Kontzias, K. Yamaoka, Y. Tanaka and A. Laurence, *Ann. Rheum. Dis.*, 2013, **72**, 111–115.
- 5 EMA, Refusal of the marketing authorisation for Xeljanz (tofacitinib), http://www.ema.europa.eu/docs/en_GB/document_library/Summary_of_opinion_-_Initial_authorisation/human/002542/WC500146629.pdf.
- 6 S. Knapp, P. Arruda, J. Blagg, S. Burley, D. H. Drewry, A. Edwards, D. Fabbro, P. Gillespie, N. S. Gray, B. Kuster, K. E. Lackey, P. Mazzafera, N. C. O. Tomkinson, T. M. Willson, P. Workman and W. J. Zuercher, *Nat. Chem. Biol.*, 2013, **9**, 3–7.
- 7 M. Gehringer, M. Forster, E. Pfaffenrot, S. M. Bauer and S. A. Laufer, *ChemMedChem*, 2014, DOI: 10.1002/cmdc.201402252.
- 8 I. Lazaro, M. Gonzalez, G. Roy, L. M. Villar and P. Gonzalez-Porque, *Anal. Biochem.*, 1991, **192**, 257–261.
- 9 M. Gehringer, E. Pfaffenrot, S. Bauer and S. A. Laufer, *ChemMedChem*, 2014, **9**, 277–281.
- 10 J. H. Zhang, T. D. Y. Chung and K. R. Oldenburg, *J. Biomol. Screening*, 1999, **4**, 67–73.
- 11 International Conference on Harmonisation of Technical Requirements for Registration of Pharmaceuticals for Human Use, in Current Step 4 version, Parent Guideline dated 27 October 1994 (Complementary Guideline on Methodology dated 6 November 1996 incorporated in November 2005), 2005.
- 12 R. A. Copeland, *Anal. Biochem.*, 2003, **320**, 1–12.
- 13 M. Goettert, S. Luik, R. Graeser and S. A. Laufer, *J. Pharm. Biomed. Anal.*, 2011, **55**, 236–240.
- 14 M. E. Flanagan, T. A. Blumenkopf, W. H. Brissette, M. F. Brown, J. M. Casavant, C. Shang-Poa, J. L. Doty, E. A. Elliott, M. B. Fisher, M. Hines, C. Kent, E. M. Kudlacz, B. M. Lillie, K. S. Magnuson, S. P. McCurdy, M. J. Munchhof, B. D. Perry, P. S. Sawyer, T. J. Strelevitz, C. Subramanyam, J. M. Sun, D. A. Whipple and P. S. Changelian, *J. Med. Chem.*, 2010, **53**, 8468–8484.

