

Establishment of two complementary *in vitro* assays for radiocopper complexes achieving reliable and comparable evaluation of *in vivo* stability†

K. Zarschler,‡ M. Kubeil‡ and H. Stephan*

Cite this: *RSC Adv.*, 2014, 4, 10157

The development of novel radiopharmaceuticals for imaging and therapy requires rapid and reproducible *in vitro* assays to estimate their *in vivo* stability and dissociation behaviour. In general, these assays should allow an assessment of dissociation of the radiometal from the radiopharmaceuticals. In the past, a series of chemical challenges has been widely used to estimate complex stability under non-physiological and non-radiotracer conditions providing limited information on the potential *in vivo* stability. In contrast, we herein present two independent *in vitro* methods to measure the stability of radiocopper complexes under physiologically relevant conditions. To quantify and compare the dissociation behaviour of six well-established ⁶⁴Cu chelates (TETA, DOTA, NOTA, Cyclam, diamSar and EDTA), we combine a protein challenge experiment considering the stability of the chelates in the presence of human superoxide dismutase with a serum assay measuring the stability of the radiometal complexes against human serum. Unlike HPLC- and TLC-based analytical techniques, we describe the stability assessments by standard gel electrophoretic procedures, which allow a timesaving workflow as well as simultaneous processing and comparative analysis of a variety of copper-containing chelates and conjugates thereof. [⁶⁴Cu]Cu-diamSar is the most kinetically stable ligand, whereas the acyclic chelate [⁶⁴Cu]Cu-EDTA underwent an almost complete complex dissociation. Furthermore, kinetic stability studies in human serum carried out for [⁶⁴Cu]Cu-diamSar revealed no substantial time-dependent influence under commonly used labelling conditions. Both described assays, the protein challenge experiment as well as the serum stability assay, are not restricted to radiocopper, but may be adopted for other radiometal containing chelates.

Received 4th December 2013
 Accepted 30th January 2014

DOI: 10.1039/c3ra47302c

www.rsc.org/advances

Introduction

The clinically most relevant copper radionuclides ⁶⁴Cu and ⁶⁷Cu have attractive nuclear decay properties for nuclear medicinal applications in the fields of imaging and therapy.^{1–9} In typical radiometal-labelled radiopharmaceuticals for tumour visualization and treatment, these radiometals are complexed usually by chelating moieties, which are further covalently attached to oncotropic vector molecules.^{10–15} In order to obtain the desired biodistribution, to achieve appropriate tumour accumulation and to allow optimal clearance from non-target tissues, highly stable complexation of the radiometal is a key prerequisite. Conversely, dissociation of the radiometal complexes results in unspecific accumulation in non-target tissues and thus in poor target-to-background ratios, low imaging contrast between

diseased and healthy tissue and exposure of healthy tissue to potentially damaging radiation. In the last decades new bifunctional copper-containing chelating agents (BFCAs), showing remarkable thermodynamic stabilities, have been developed to overcome these limitations. Valuable information about relative *in vivo* kinetic stability can be indirectly gained from metal ion exchange^{16,17} and cross ligand challenge experiments.^{16,18–26} Acid-assisted dissociation studies have been also applied.^{27,28} These methods are supposed to reflect the stability of BFCAs for copper(II), while not really associated with *in vivo* conditions. In this context, serum stability experiments are more suitable.^{29–33} Hence, the understanding of copper metabolism, particularly proteins which are involved, is crucial to achieve reliable predictions of prospective *in vivo* stability using *in vitro* assays.

In biological systems, copper homeostasis is tightly regulated and copper itself functions as a structural and catalytic cofactor for proteins in a multitude of processes such as oxygen transport, energy generation, iron acquisition, blood clotting, oxidative stress protection and normal cell growth.^{34–39} Copper ions exist in living organisms in two oxidation states, oxidized

Institute of Radiopharmaceutical Cancer Research, Helmholtz-Zentrum Dresden-Rossendorf, Bautzner Landstraße 400, D-01328 Dresden, Germany. E-mail: h.stephan@hzdr.de

† Electronic supplementary information (ESI) available. See DOI: 10.1039/c3ra47302c

‡ These authors contributed equally.



copper(II) and reduced copper(I), and this redox activity is utilized by a wide variety of enzymes. However, the same redox properties cause cellular oxidative damage when the transition metal occurs in excessive concentrations. Defence mechanisms are designed to chelate immediately copper ions to proteins, protecting the cells against redox-induced damages.^{40,41} Once ionic copper enters the blood, it is immediately taken up by serum proteins (albumin, α_2 -macroglobulin) that deliver copper efficiently to the liver, a central organ of copper homeostasis and the kidney.^{42,43} Serum albumin represents one of the most abundant proteins of the vascular system and possesses high-specific binding sites for copper(II).^{42,44–47} Albumin- and α_2 -macroglobulin-bound copper is rapidly exchanged between both serum proteins and is released therefrom directly to specific transporter systems in the cell membrane. Before import of copper into the cytosol mediated by Ctr1 (copper transporter 1), an integral membrane protein highly-specific for copper(I), albumin- and α_2 -macroglobulin-bound copper(II) is reduced to copper(I) by a putative cell surface metallo-reductase.⁴⁸ Once in the cytosol of a mammalian cell, copper is routed by small proteins known as metallochaperones to Cu-dependent enzymes (superoxide dismutase, cytochrome *c* oxidase) or incorporated into Cu-dependent proteins traversing the secretion pathways such as caeruloplasmin.^{49–53} Copper/zinc superoxide dismutase SOD1 is a homodimeric enzyme (32 kDa), which is mostly abundant in the cells of liver and kidney as well as erythrocytes. Its major function is the catalytic conversion of superoxide radicals to hydrogen peroxide and oxygen protecting the cell against oxidative damage. This disproportionation is

dependent on an active site embedding the metal ions Cu and Zn.^{54,55} Several stability studies of ^{64}Cu -labelled BFCA biomolecule conjugates have significantly pointed to the dissociation of ^{64}Cu in the presence of SOD.^{31,32}

Herein we describe two independent *in vitro* methods for radiocopper complexes representing a complementary combination of a protein challenge experiment and a serum stability assay. The former approach considers the stability of radiopharmaceuticals in the presence of human Cu/Zn-SOD, whereas the latter assay measures the stability of the radiometal complex against human serum. We compared six well-established ^{64}Cu -labelled BFCAs (Fig. 1) in order to estimate their radiocopper dissociation *in vivo*: TETA **1** (1,4,8,11-tetra(carboxymethyl)-1,4,8,11-tetraazacyclotetradecane), DOTA **2** (1,4,7,10-tetra(carboxymethyl)-1,4,7,10-tetraazacyclododecane), NOTA **3** (1,4,7-tri(carboxymethyl)-1,4,7-triazacyclononane), Cyclam **4** (1,4,8,11-tetraazacyclotetradecane), diamSar **5** (1,8-diamino-3,6,10,13,16,19-hexazabicyclo[6.6.6]icosane) and EDTA **6** (2-[2-[bis(carboxymethyl)amino]ethyl-(carboxymethyl)amino]acetic acid).

Since the exchange of ^{64}Cu to the respective proteins was quantified using gel electrophoresis techniques, the presented assays allow simultaneous analysis of multiple samples in less than four hours. Furthermore, these techniques also allow a stability assessment of ^{64}Cu -labelled BFCA-protein conjugates. For this approach, we coupled the single-domain antibody (sdAb) 7C12 with 2-(*p*-isothiocyanatobenzyl)-NOTA (SCN-Bn-NOTA) to produce a NOTA-Bn-sdAb conjugate. This particular sdAb represents a promising vector molecule for molecular imaging applications, since it possesses high affinity for

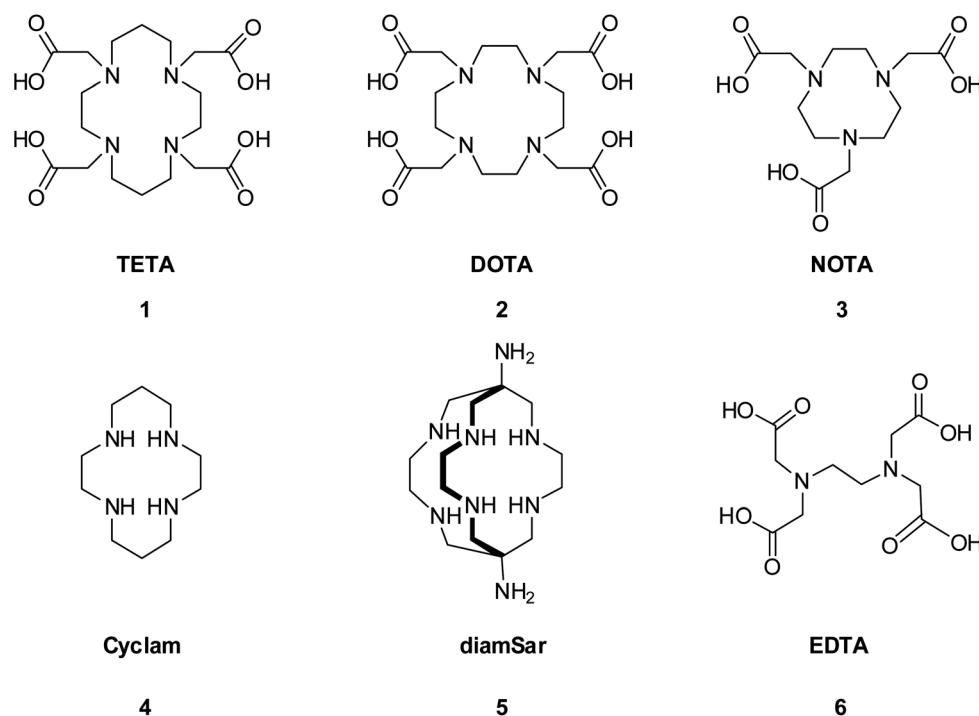


Fig. 1 Structures of the ligands used in this study. The well-established azamacrocycles for radiocopper complexation TETA **1**, DOTA **2**, NOTA **3**, Cyclam **4**, diamSar **5** as well as the acyclic chelator EDTA **6** were investigated by a superoxide dismutase challenge experiment and a serum stability assay.



the epidermal growth factor receptor (EGFR),⁵⁶ which is overexpressed and/or deregulated in a wide range of tumour entities.⁵⁷

Results and discussion

To study the kinetic stability of ⁶⁴Cu labelled complexes, we established two independent *in vitro* methods representing a complementary combination of a superoxide dismutase (SOD) challenge experiment and a serum stability assay. It has been reported that the kinetic, rather than the thermodynamic stability plays an important role in the evaluation of ⁶⁴Cu chelates for *in vivo* applications. Therefore, a couple of well-established radiocopper azamacrocycles 1–5 and EDTA 6 were investigated to quantify the complex dissociation and transchelation of ⁶⁴Cu to serum proteins and SOD. These macrocyclic chelates possess different *in vivo* behaviours which result from a kinetic stability dependent resistance against transchelation.^{4,9,27,28,58–60} In order to estimate the stability of the radiometal complexes, they were incubated in the presence of human serum and human SOD and the level of complex dissociation was analysed by polyacrylamide gel electrophoresis (PAGE) followed by electronic autoradiography. To quantify the data, we used free [⁶⁴Cu]CuCl₂ as 100% normalized standard which was treated in the same way as the chelators. The linear dependence of radioluminographic blackening intensities and [⁶⁴Cu]CuCl₂ activities is shown in Fig. S1.† The described workflow based on standard gel electrophoretic procedures allows simultaneous processing and comparative analysis of a multitude of copper-containing chelates and conjugates thereof in less than 4 h. In contrast, radio-HPLC (SEC) analysis of a comparable number of samples would take more time, whereas simultaneous analysis is impossible. Alternatively, radio-TLC procedure is a rapid method to analyse the stability, but [⁶⁴Cu]-Cu-labelled conjugates possessing antibodies or peptides as targeting units show often the same retention behaviour as [⁶⁴Cu]-Cu-labelled serum proteins. Quantification and identification is in these cases not possible. In fact, the PAGE allows the same procedures for almost all potential radiopharmaceuticals to be studied without developing time-consuming tailor-made retention conditions for each sample.

SOD challenge experiment

Fig. 2 represents an exemplary depiction of a native polyacrylamide gel obtained by the described SOD challenge. In the Coomassie stained gel, two distinct bands with different isoelectric points are detectable, which may represent distinct SOD isoforms or SOD with varying degrees of post-translational processing.^{61,62} The autoradiographic scan shows in each lane corresponding radioactive protein bands. The enzyme was incubated before with radiolabelled samples 1–6 and the reference [⁶⁴Cu]CuCl₂ as described in the methods section.

The different blackening intensities of the bands originate from different amounts of ⁶⁴Cu, which was demetalated and incorporated into SOD. Non-specific binding of the radiolabelled chelates with the enzyme as a reason for the strong signal (rather than transchelation) can be excluded, since such

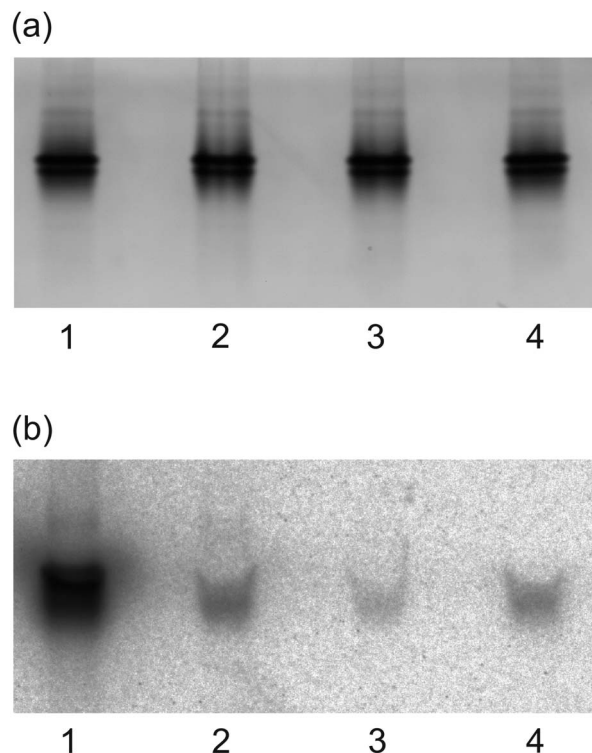


Fig. 2 Analysis of ⁶⁴Cu incorporation into human erythrocyte superoxide dismutase (SOD). Colloidal Coomassie stained native polyacrylamide gel (a) and autoradiography (b) showing ⁶⁴Cu-labelled bands of SOD: lane 1 [⁶⁴Cu]CuCl₂; lane 2 [⁶⁴Cu]Cu-DOTA; lane 3 [⁶⁴Cu]Cu-NOTA; lane 4 [⁶⁴Cu]Cu-Cyclam.

interactions would influence the electrophoretic mobility of the proteins. However, the migration of SOD, which is during native PAGE mainly depending on the molecular mass and intrinsic charge, is identical between the reference and the different chelates. Conversely, non-specific interactions between the radiolabelled chelates and the enzyme would result in shifted bands, what is obviously not the case.

Quantitative determination of transchelation is related to the reference [⁶⁴Cu]CuCl₂ and can be calculated using the following equations:

$$X_{\text{reference}} = \text{integral}/\text{activity} \quad (1)$$

$$Y_{\text{sample}} = \text{integral}/\text{activity} \quad (2)$$

$$\text{transchelation [\% of control]} = (Y_{\text{sample}}/X_{\text{reference}}) \times 100 \quad (3)$$

Using the AIDA software, the different blackening intensities were integrated and the resulting values were divided by the corresponding activities of the respective ⁶⁴Cu complexes (Y_{sample}) or the [⁶⁴Cu]CuCl₂ reference ($X_{\text{reference}}$). The transchelation rate is defined as the ratio of Y_{sample} and $X_{\text{reference}}$.

Fig. 3 summarizes the quantitative results of incorporated ⁶⁴Cu into SOD according to the investigated radiolabelled chelates 1–6. All macrocyclic ligands showed a high resistance against transchelation in the presence of human SOD. Respectively, the diamSar 5 ($0.6 \pm 0.1\%$ transchelation of ⁶⁴Cu to SOD)



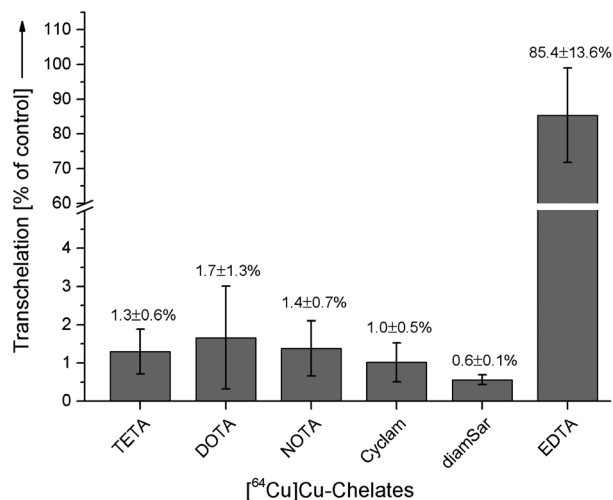


Fig. 3 ⁶⁴Cu-transchelation [% of control] to human erythrocyte superoxide dismutase (SOD) for ⁶⁴Cu-labelled ligands 1–6. After radiolabelling, indicated [⁶⁴Cu]Cu-chelates were incubated for 1 h at 37 °C with excess SOD and subsequently separated by native PAGE. Following electronic autoradiography, gels were stained with colloidal Coomassie staining solution. Quantitative analysis of average band intensities was performed as described in the results section. Each point represents the mean ± SD of three samples.

ligand possesses the highest stability after 1 h incubation in the SOD challenge experiment. While the acyclic radiolabelled ligand EDTA 6 underwent a nearly complete transchelation (85.4 ± 13.6%) in the presence of SOD under the same conditions.

Serum stability assay

In Fig. 4 an exemplary depiction of a non-reducing SDS polyacrylamide gel obtained by the described serum stability assay is shown.

A prominent protein band in the size range of approximately 65 kDa is visible in the autoradiographic scan, which corresponds most likely to radioactive serum albumin. Other serum proteins with high-affinity sites for copper(II) such as α₂-macroglobulin (~180 kDa) are not visible due to the predominantly low abundance in human serum and the rather low *in vivo* application-related activity of [⁶⁴Cu]CuCl₂. However, if substantially higher activities were used for radiolabelling the ⁶⁴Cu chelates, an additional faint protein band is visible in the autoradiographic scan in the size >100 kDa (data not shown). Although not investigated in more detail here, this band may correspond to serum caeruloplasmin, which represents a 132 kDa α₂-glycoprotein with the potential to bind six copper ions.^{43,63}

As explained for the SOD challenge, the different blackening intensities of the albumin bands originate from different amounts of radiocopper, which dissociates from the chelate upon incubation with serum and which is subsequently bound primarily by albumin. Since no shift in the radioactive albumin band is detectable between the different samples and the reference, non-specific interactions of the radiolabelled chelates with the protein are unlikely, but cannot be excluded completely.

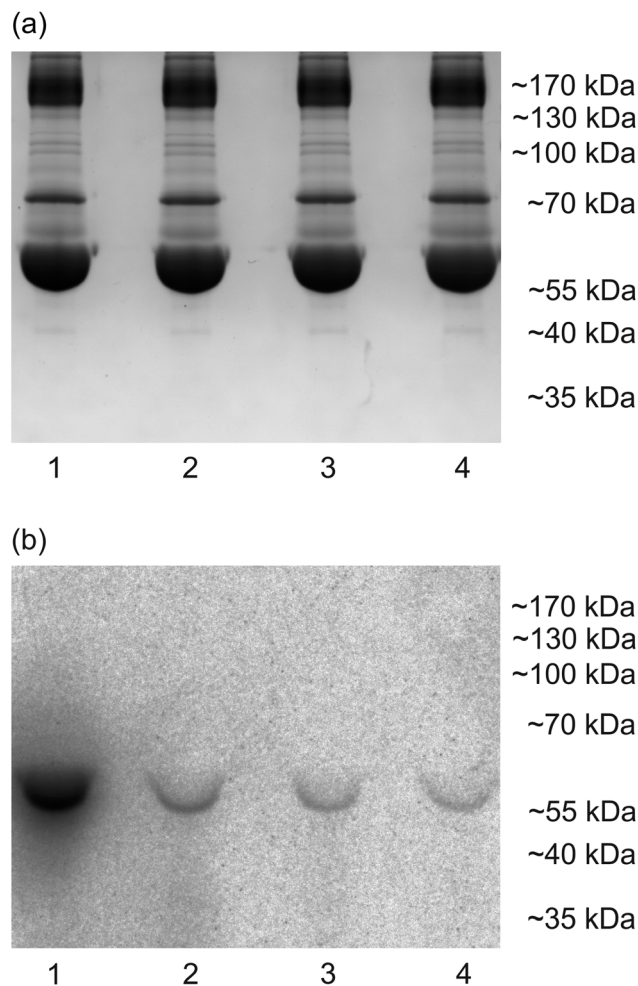


Fig. 4 Analysis of ⁶⁴Cu-incorporation into human serum proteins. Colloidal Coomassie stained SDS-polyacrylamide gel (a) and autoradiography (b) showing ⁶⁴Cu-labelled bands of human serum proteins: lane 1 [⁶⁴Cu]CuCl₂; lane 2 [⁶⁴Cu]Cu-DOTA; lane 3 [⁶⁴Cu]Cu-NOTA; lane 4 [⁶⁴Cu]Cu-Cyclam.

Upon incubation of NOTA-Bn-sdAb with human serum, additional bands with the size of approximately 14 kDa and >70 kDa are visible in the autoradiographic scan (Fig. 5). The former represents the radiolabelled protein-NOTA conjugate, whereas the bands with molecular weights of more than 70 kDa could correspond to complexes of radiolabelled NOTA-Bn-sdAb and serum circulating soluble isoforms of EGFR (sEGFR). Several of these soluble receptor isoforms have been detected in the sera of normal humans and cancer patients. Alternative splicing events of EGFR mRNAs and proteolytic cleavage of full-length transmembrane EGFR isoforms are the reasons for the localisation of these sEGFR proteins in human serum.⁶⁴ Since the herein used sdAbs possess high affinity for the extracellular domain of EGFR presented by human cancer cells, they almost certainly bind soluble receptor isoforms as well.

The quantitative determination of complex stability in human serum for ⁶⁴Cu-labelled chelates was calculated with the same method as for the SOD challenge (Fig. 6).



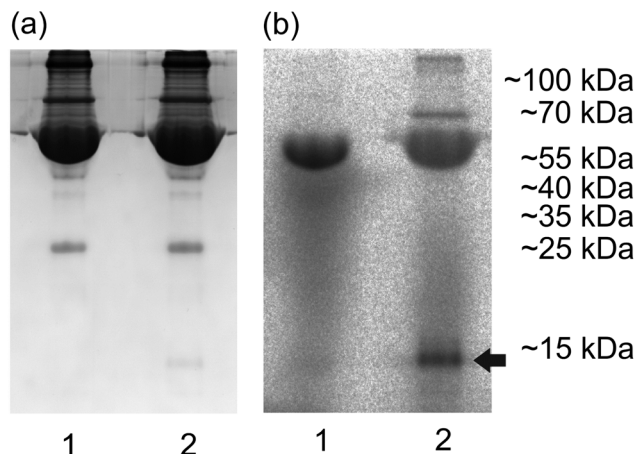


Fig. 5 Serum stability of NOTA-Bn-protein conjugate. Colloidal Coomassie stained SDS-polyacrylamide gel (a) and autoradiography (b) showing ^{64}Cu -labelled bands of human serum proteins and single domain antibody (sdAb): lane 1 [^{64}Cu]CuCl₂; lane 2 [^{64}Cu]Cu-NOTA-Bn-sdAb. The band corresponding to NOTA-Bn-sdAb is highlighted by an arrow.

It is worth noting that the serum stability assay supports the trends of stability obtained by the SOD challenge. The sarcophagine ligand diamSar 5 showed only marginal ^{64}Cu transchelation to albumin ($1.7 \pm 0.5\%$) after 1 h of incubation. As expected, radiocopper dissociates completely from ^{64}Cu -labelled EDTA 6 ($100 \pm 12\%$) and is subsequently incorporated by albumin illustrating impressively the decreased stability associated with the acyclic structure. In contrast, the widely used ^{64}Cu -labelled azamacrocycles [^{64}Cu]Cu-TETA ($4.2 \pm 2.3\%$),

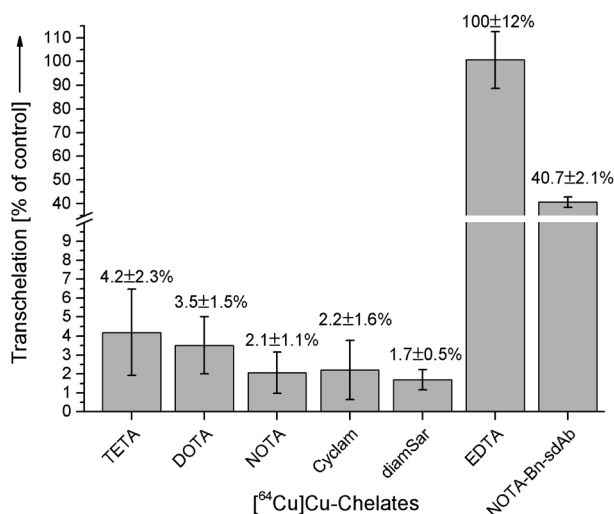


Fig. 6 ^{64}Cu -transchelation [% of control] in human serum for ^{64}Cu -labelled ligands 1–6 and protein conjugate. After radiolabelling, indicated ^{64}Cu -species were incubated for 1 h at 37°C in human serum and subsequently separated by SDS-PAGE. Following electronic autoradiography, gels were stained with colloidal Coomassie staining solution. Quantitative analysis of average band intensities was performed as described in the results section. Each point represents the mean \pm SD of three samples.

[^{64}Cu]Cu-DOTA ($3.5 \pm 1.5\%$) and [^{64}Cu]Cu-NOTA ($2.1 \pm 1.1\%$) remain relatively intact upon incubation in human serum for 1 h suggesting a high resistance towards albumin. However, conjugation of NOTA to the sdAb resulted in a substantial decrease in kinetic stability ($40.7 \pm 2.1\%$). This finding emphasizes that the adjacencies may significantly influence the stability of the formed copper complex. For example, exposed amino acid residues of the sdAb itself can compete with the chelator, especially if the central ion is not completely shielded. However, the developed assays offer the possibility to rapidly figure out the most appropriated chelator system to be introduced in any system of choice.

Both methods, the SOD challenge as well as the serum stability assay, identified the macrocyclic ligand diamSar the most stable out of the six examined ^{64}Cu chelates. This result confirms recent *in vitro* and *in vivo* data.⁶⁰ The radiocopper azamacrocyclic acid derivatives 1–3 show very similar kinetic stability, whereas cyclam 4 appears to be slightly less prone to dissociation. Among these BFCAs, cyclam forms the most stable copper(II) complex.^{65,66} *In vivo* dissociation of ^{64}Cu from macrocyclic chelates such as TETA and binding to rat liver located SOD has been described previously.^{31,67} Therein, the major metabolite in liver homogenates from rats sampled 20 h post-injection was identified to be SOD. Boswell and colleagues performed comparative *in vivo* stability analysis of a series of ^{64}Cu -labelled macrocyclic complexes including TETA and DOTA.³² In rat liver extracts, the majority of protein-bound ^{64}Cu was associated with SOD, whereas in blood extracts mainly ^{64}Cu -labelled rat albumin was detected. Since this particular study, the amount of protein bound ^{64}Cu was calculated from integration of size-exclusion chromatograms, the values cannot be compared. However, unlike with published data concerning

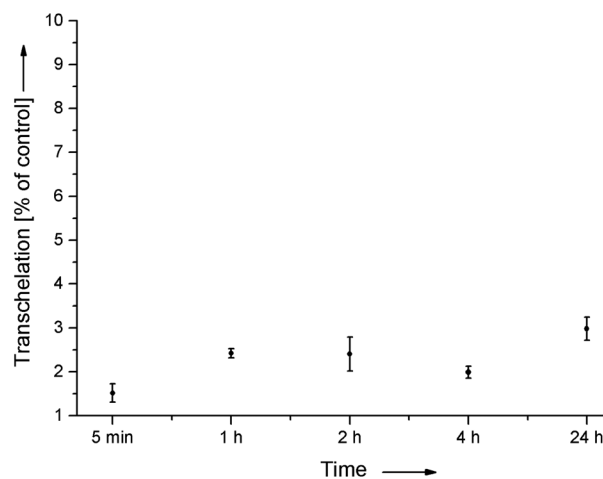


Fig. 7 ^{64}Cu -transchelation [% of control] in human serum for ^{64}Cu -Cu-diamSar as function of time. After radiolabelling of diamSar (10 nmol), the corresponding ^{64}Cu -complexes were incubated for different time periods ranging from 5 min to 24 h at 37°C in human serum and subsequently separated by SDS-PAGE. Following electronic autoradiography, gels were stained with colloidal Coomassie staining solution. Quantitative analysis of average band intensities was performed as described in the results section. Each point represents the mean \pm SD of three samples.



the high instability of ^{64}Cu -DOTA in rat liver extracts, our results showed no substantial release of ^{64}Cu to SOD ($1.7 \pm 1.3\%$).

Time-dependent studies were performed choosing [^{64}Cu]Cu-diamSar to measure the kinetic stability in human serum. Data of kinetic stability as a function of time were obtained after certain incubation periods (5 min, 1 h, 2 h, 4 h and 24 h) and were analysed in the same manner as described above, except that the initial activity was increased to ~ 40 MBq [^{64}Cu]CuCl₂. The results are depicted in Fig. 7 and clearly show no significant increase of transchelation after one hour. In other words, also long term exposure of [^{64}Cu]Cu-diamSar to human serum at physiological temperature induces no transchelation of radio-copper to serum proteins.

Experimental

General materials

A Direct-Q 3 UV water purification system from Millipore (Merck KGaA) was applied for producing deionized water. The resistance of deionized water was 18.2 M Ω . DOTA (Cat. #C 032) and NOTA (Cat. #C 082) were purchased from CheMatech. DiamSar was synthesized according the literature.⁶⁸ SCN-Bn-NOTA (Cat. #B-605) was purchased from Macrocyclics. Cyclam (Cat. #259160), TETA (Cat. #400408), superoxide dismutase from human erythrocytes (Cat. #S9636) as well as 2-[4-(2-hydroxyethyl)piperazin-1-yl]ethanesulfonic acid (HEPES; Cat. #H3375) were purchased from Sigma-Aldrich. Human serum "Off the clot" (Cat. #S 01049.1) was obtained from Biochrom AG and 2-(*N*-morpholino)ethanesulfonic acid (MES; Cat. #A1074) was delivered by Applichem. The radiolabelling process of the chelators was monitored by radio-TLC and evaluated using a radioactivity thin layer analyser (Rita Star, Raytest). Radioactivity was counted with ISOMED 2010 (MED Nuklear-Medizintechnik Dresden GmbH). The polyacrylamide gels were exposed to reusable imaging plates for 10 min and subsequently read by a radioluminography laser scanner BAS-1800II (Raytest). The difference in the relative proportions of ^{64}Cu complex and free ^{64}Cu provides a measure of the kinetic stability of the ^{64}Cu complex. The resulting images were normalized to 100% free ^{64}Cu as reference. Each sample was investigated a minimum of three times in independent experiments and results are reported as the mean with standard deviations (SD).

Radiochemistry

The production of ^{64}Cu was performed at Cyclone® 18/9 (Helmholtz-Zentrum Dresden-Rossendorf) in a $^{64}\text{Ni}(p,n)^{64}\text{Cu}$ nuclear reaction with specific activities of 150–250 GBq μmol^{-1} Cu diluted in HCl (10 mM).⁶⁹ The general procedures for radiolabelling were as follow: To each ligand (10 nmol, stock solution of 1 mg mL⁻¹ diluted in H₂O) was added [^{64}Cu]CuCl₂ (10–14 MBq in 100 μL of 100 mM MES/NaOH buffer pH 5.5) followed by 1 h incubation at 25 °C. Formation of the complexes were analysed by radio-TLC using different stationary and mobile phases (see Table S1†). The radiochemical purity were higher than 99%, otherwise they were rejected. Importantly, the

pH was adjusted to pH 7.6 using 1 M HEPES/NaOH buffer pH 8.0 (50 μL) after radiolabelling.

Preparation of radiolabelled protein-NOTA conjugate

Single-domain antibodies (sdAbs) were expressed and purified as described recently.⁷⁰ For conjugation reaction, a mixture of SCN-Bn-NOTA (60 μmol , 33.6 mg) and sdAbs (0.6 μmol , 9.0 mg) in bicarbonate buffer (50 mM NaHCO₃, 150 mM NaCl, pH 8.5) was allowed to react for 20 h at room temperature in the dark. The reaction mixture was purified by dialysis (100 mM MES/NaOH, 150 mM NaCl, pH 5.5) using Spectra/Por Float-A-Lyzer G2 with a molecular weight cut off of 3.5–5 kDa from Spectrum Laboratories (Cat. #G235053) to remove non-conjugated small molecules. To NOTA-conjugated sdAbs (10 pmol, 150 μg), [^{64}Cu]CuCl₂ (10–14 MBq in 100 μL of 100 mM MES/NaOH buffer pH 5.5) was added followed by 1 h incubation at 25 °C. An aliquot of the solution (5 μL) was combined with EDTA (2 nmol, pH 7.0) and the labelling process of the NOTA-conjugated sdAbs ($R_f = 0.2$) was monitored by radio-TLC using ITLC-SA plates in combination with a mobile phase of NaCl (0.9%) in H₂O. As reference, separate radio-TLC analysis of [^{64}Cu]Cu-EDTA ($R_f = 1$) was performed in the same mobile phase. Importantly, the pH was adjusted to pH 7.6 using 1 M HEPES/NaOH buffer pH 8.0 (50 μL) after radiolabelling.

Superoxide dismutase assay

Human erythrocyte superoxide dismutase (SOD) was reconstituted in H₂O to a protein concentration of 1 $\mu\text{g} \mu\text{L}^{-1}$ (~ 4 units per μL) and stored in aliquots (10 μL , 0.3 nmol) at -20 °C. For SOD experiments, aliquots were thawed on ice and [^{64}Cu]Cu-labelled ligands 1–6 (0.1 nmol, 1.5 μL) or [^{64}Cu]CuCl₂ as reference were added to SOD (0.3 nmol, 10 μg). The mixtures were incubated for 1 h at 37 °C followed by adding 1 volume native sample buffer (Bio-Rad Laboratories, Cat. #161-0738). The samples were separated using non-reducing and non-denaturing polyacrylamide gel electrophoresis (PAGE) with acrylamide concentrations of 15% in the resolving and 5% in the stacking gel. The composition of the gels is depicted in the Table S2.† Twenty μL of each sample were loaded into each well of the gel. The native PAGE was run at r.t. and 80 V until the dye front reached the resolving gel and then increased up to 140–160 V. After electrophoresis, the gel was washed for 1 min in H₂O and exposed for 10 min to a reusable imaging plate (Fuji-film). Following electronic autoradiography using a radioluminography laser scanner, the gel was stained with PageBlue protein staining solution (Thermo Fisher Scientific) according to the manufacturer's instructions. Quantitative analysis of average band intensities was performed with the Advanced Image Data Analysis (AIDA) program (Raytest).

Serum assay

Upon delivery, human serum "Off the clot" was split into aliquots (10 mL) and stored at -20 °C. For serum experiments, aliquots were thawed on ice and filtered using syringe filters with a pore size of 0.45 μm . After mixing filtered serum (220 μL) with 1 M HEPES/NaOH buffer pH 7.4 (45 μL), [^{64}Cu]Cu-labelled



ligands 1–6 or [^{64}Cu]Cu-NOTA-sdAbs (9 nmol, 135 μL , ~ 9 MBq) were added. Following incubation for 1 h at 37 $^{\circ}\text{C}$, 2 \times Laemmli sample buffer (400 μL , Bio-Rad Laboratories, Cat. #161-0737) was added. Importantly, no reducing agent was added to the Laemmli buffer and the samples were not heated. The mixtures were separated using non-reducing SDS-polyacrylamide gel electrophoresis (SDS-PAGE) with acrylamide concentrations of 5% in the stacking and 10% in the resolving gel. For samples containing [^{64}Cu]Cu-NOTA-sdAbs, an acrylamide concentration of 15% in the resolving gel was chosen in order to ensure detection of radiolabelled sdAbs. The composition of the gels is depicted in the Table S3.† Two μL of each sample were loaded into each well of the gel. The SDS-PAGE was run at r.t. and 80 V until the dye front reached the resolving gel and then increased up to 140–160 V. After electrophoresis, the gel was washed for 1 min in H_2O and exposed for 10 min to a reusable imaging plate (Fujifilm). Following electronic autoradiography using a radioluminography laser scanner, the gel was stained with PageBlue protein staining solution (Thermo Fisher Scientific) according to the manufacturer's instructions. As for the SOD challenge, quantitative analyses of average band intensities were performed with the AIDA software.

Kinetic studies

Time-dependent serum stability assessments were performed after 5 min, 1 h, 2 h and 24 h of incubation at 37 $^{\circ}\text{C}$ in human serum by choosing [^{64}Cu]Cu-diamSar as an example. Radiolabelling of diamSar as well as serum stability assay was performed as described above. Due to the half-life of ^{64}Cu (12.7 h), the initial activity for radiolabelling was set to ~ 40 MBq [^{64}Cu]CuCl $_2$.

Conclusions

To date, the described methods represent the first quantitative evaluation to predict the stability of ^{64}Cu -containing chelates under physiologically relevant conditions using standard gel electrophoresis techniques. The cost-efficient, rapid and easy to handle procedure of both complementary assays make them a favourable alternative to achieve reliable results which are consistent with *in vivo* stability, and allow prediction and interpretation of biodistribution data. Herein, we have verified commonly used ^{64}Cu chelates which show an enhanced resistance against transchelation in the presence of excess SOD and albumin. Remarkably, ^{64}Cu -labelled diamSar 5 appears to possess the highest kinetic stability of all tested chelators and exhibits a great potential for the development of radiopharmaceuticals based on ^{64}Cu . However, as shown for NOTA, conjugation with biomolecules can have a substantial effect on the kinetic stability of the chelate. Both assays presented here, the protein challenge experiment as well as the serum stability assay, are transferable not only to newly designed chelators, but also to those which contain vector molecules such as antibodies, peptides or oligonucleotides. Furthermore, these protocols are not restricted to radiocopper, but may be adopted for other radiometal containing chelates.

Acknowledgements

We kindly thank the group of Prof Leone Spiccia (Monash University, Melbourne, Australia) for providing the diamSar ligand, as well as Prof Leone Spiccia and Prof Peter Comba (University of Heidelberg, Germany) for their encouraged ideas and critical discussions. Furthermore, we thank Janine Partsch for excellent technical assistance. Financial support by the Helmholtz Virtual Institute NanoTracking (Agreement Number VH-VI-421) is gratefully acknowledged. This study is part of a research initiative "Technologie und Medizin – Multimodale Bildgebung zur Aufklärung des *in vivo* Verhaltens von polymeren Biomaterialien" of the Helmholtz-Portfoliothema.

Notes and references

- 1 C. J. Anderson and R. Ferdani, *Cancer Biother. Radiopharm.*, 2009, **24**, 379–393.
- 2 P. J. Blower, J. S. Lewis and J. Zweit, *Nucl. Med. Biol.*, 1996, **23**, 957–980.
- 3 M. D. Bartholomä, *Inorg. Chim. Acta*, 2012, **389**, 36–51.
- 4 R. Delgado, V. Felix, L. M. Lima and D. W. Price, *Dalton Trans.*, 2007, 2734–2745.
- 5 P. S. Donnelly, *Dalton Trans.*, 2011, **40**, 999–1010.
- 6 M. Shokeen and C. J. Anderson, *Acc. Chem. Res.*, 2009, **42**, 832–841.
- 7 S. V. Smith, *J. Inorg. Biochem.*, 2004, **98**, 1874–1901.
- 8 T. J. Wadas, E. H. Wong, G. R. Weisman and C. J. Anderson, *Curr. Pharm. Des.*, 2007, **13**, 3–16.
- 9 T. J. Wadas, E. H. Wong, G. R. Weisman and C. J. Anderson, *Chem. Rev.*, 2010, **110**, 2858–2902.
- 10 M. F. Tweedle, *Acc. Chem. Res.*, 2009, **42**, 958–968.
- 11 M. T. Ma and P. S. Donnelly, *Curr. Top. Med. Chem.*, 2011, **11**, 500–520.
- 12 B. M. Zeglis and J. S. Lewis, *Dalton Trans.*, 2011, **40**, 6168–6195.
- 13 M. Fani and H. R. Maecke, *Eur. J. Nucl. Med. Mol. Imaging*, 2012, **39**(suppl. 1), S11–S30.
- 14 A. L. Vavere and R. Rossin, *Anticancer Agents Med. Chem.*, 2012, **12**, 462–475.
- 15 P. Laverman, J. K. Sosabowski, O. C. Boerman and W. J. Oyen, *Eur. J. Nucl. Med. Mol. Imaging*, 2012, **39**(suppl. 1), S78–S92.
- 16 D. Ma, F. Lu, T. Overstreet, D. E. Milenic and M. W. Brechbiel, *Nucl. Med. Biol.*, 2002, **29**, 91–105.
- 17 V. Maheshwari, J. L. J. Dearling, S. T. Treves and A. B. Packard, *Inorg. Chim. Acta*, 2012, **393**, 318–323.
- 18 I. Novak-Hofer, R. Waibel, K. Zimmermann, R. Schibli, J. Grunberg, K. A. Chester, A. Murray, B. K. Lo, A. C. Perkins and P. A. Schubiger, *Methods Mol. Biol.*, 2004, **248**, 481–494.
- 19 C. Glaus, R. Rossin, M. J. Welch and G. Bao, *Bioconjugate Chem.*, 2010, **21**, 715–722.
- 20 M. Shokeen, N. M. Fettig and R. Rossin, *Q. J. Nucl. Med. Mol. Imaging*, 2008, **52**, 267–277.
- 21 G. Gasser, L. Tjioe, B. Graham, M. J. Belousoff, S. Juran, M. Walther, J. U. Künstler, R. Bergmann, H. Stephan and L. Spiccia, *Bioconjugate Chem.*, 2008, **19**, 719–730.



- 22 S. Juran, M. Walther, H. Stephan, R. Bergmann, J. Steinbach, W. Kraus, F. Emmerling and P. Comba, *Bioconjugate Chem.*, 2009, **20**, 347–359.
- 23 M. Kuhlmann, H. Stephan, J. Steinbach and A. Röhrich, *Nucl. Med. Biol.*, 2010, **37**, 681–681.
- 24 P. Comba, S. Hunoldt, M. Morgen, J. Pietzsch, H. Stephan and H. Wadepohl, *Inorg. Chem.*, 2013, **52**, 8131–8143.
- 25 J. Kotek, P. Lubal, P. Hermann, I. Cisarova, I. Lukes, T. Godula, I. Svobodova, P. Taborsky and J. Havel, *Chem. – Eur. J.*, 2003, **9**, 233–248.
- 26 J. A. Barreto, M. Matterna, B. Graham, H. Stephan and L. Spiccia, *New J. Chem.*, 2011, **35**, 2705–2712.
- 27 K. S. Woodin, K. J. Heroux, C. A. Boswell, E. H. Wong, G. R. Weisman, W. J. Niu, S. A. Tomellini, C. J. Anderson, L. N. Zakharov and A. L. Rheingold, *Eur. J. Inorg. Chem.*, 2005, 4829–4833.
- 28 D. N. Pandya, J. Y. Kim, J. C. Park, H. Lee, P. B. Phapale, W. Kwak, T. H. Choi, G. J. Cheon, Y. R. Yoon and J. Yoo, *Chem. Commun.*, 2010, **46**, 3517–3519.
- 29 D. L. Kukis, H. Diril, D. P. Greiner, S. J. DeNardo, G. L. DeNardo, Q. A. Salako and C. F. Meares, *Cancer*, 1994, **73**, 779–786.
- 30 P. J. Barnard, S. R. Bayly, J. P. Holland, J. R. Dilworth and P. A. Waghorn, *Q. J. Nucl. Med. Mol. Imaging*, 2008, **52**, 235–244.
- 31 L. A. Bass, M. Wang, M. J. Welch and C. J. Anderson, *Bioconjugate Chem.*, 2000, **11**, 527–532.
- 32 C. A. Boswell, X. Sun, W. Niu, G. R. Weisman, E. H. Wong, A. L. Rheingold and C. J. Anderson, *J. Med. Chem.*, 2004, **47**, 1465–1474.
- 33 M. S. Cooper, M. T. Ma, K. Sunassee, K. P. Shaw, J. D. Williams, R. L. Paul, P. S. Donnelly and P. J. Blower, *Bioconjugate Chem.*, 2012, **23**, 1029–1039.
- 34 B. E. Kim, T. Nevitt and D. J. Thiele, *Nat. Chem. Biol.*, 2008, **4**, 176–185.
- 35 T. Nevitt, H. Ohrvik and D. J. Thiele, *Biochim. Biophys. Acta*, 2012, **1823**, 1580–1593.
- 36 S. Lutsenko, *Curr. Opin. Chem. Biol.*, 2010, **14**, 211–217.
- 37 J. L. Burkhead, K. A. Reynolds, S. E. Abdel-Ghany, C. M. Cohu and M. Pilon, *New Phytol.*, 2009, **182**, 799–816.
- 38 D. Osman and J. S. Cavet, *Adv. Appl. Microbiol.*, 2008, **65**, 217–247.
- 39 M. L. Turski and D. J. Thiele, *J. Biol. Chem.*, 2009, **284**, 717–721.
- 40 M. C. Linder, *Mutat. Res.*, 2012, **733**, 83–91.
- 41 K. Jomova and M. Valko, *Toxicology*, 2011, **283**, 65–87.
- 42 M. Moriya, Y.-H. Ho, A. Grana, L. Nguyen, A. Alvarez, R. Jamil, M. L. Ackland, A. Michalczyk, P. Hamer, D. Ramos, S. Kim, J. F. B. Mercer and M. C. Linder, *Am. J. Physiol. Cell. Physiol.*, 2008, **295**, C708–C721.
- 43 M. C. Linder, N. A. Lomeli, S. Donley, F. Mehrbod, P. Cerveza, S. Cotton and L. Wotten, *Adv. Exp. Med. Biol.*, 1999, **448**, 1–16.
- 44 S. J. Lau and B. Sarkar, *J. Biol. Chem.*, 1971, **246**, 5938–5943.
- 45 J. Masuoka, J. Hegenauer, B. R. Van Dyke and P. Saltman, *J. Biol. Chem.*, 1993, **268**, 21533–21537.
- 46 R. A. Bradshaw and T. Peters, Jr, *J. Biol. Chem.*, 1969, **244**, 5582–5589.
- 47 D. T. Gordon, A. S. Leinart and R. J. Cousins, *Am. J. Physiol.*, 1987, **252**, E327–E333.
- 48 R. S. Ohgami, D. R. Campagna, A. McDonald and M. D. Fleming, *Blood*, 2006, **108**, 1388–1394.
- 49 F. Arnesano, L. Banci, I. Bertini and S. Ciofi-Baffoni, *Eur. J. Inorg. Chem.*, 2004, **8**, 1583–1593.
- 50 T. D. Rae, P. J. Schmidt, R. A. Pufahl, V. C. Culotta and T. V. O'Halloran, *Science*, 1999, **284**, 805–808.
- 51 L. Banci, I. Bertini, F. Cantini and S. Ciofi-Baffoni, *Cell. Mol. Life Sci.*, 2010, **67**, 2563–2589.
- 52 T. V. O'Halloran and V. C. Culotta, *J. Biol. Chem.*, 2000, **275**, 25057–25060.
- 53 P. Palumaa, *FEBS Lett.*, 2013, **587**, 1902–1910.
- 54 V. C. Culotta, M. Yang and T. V. O'Halloran, *Biochim. Biophys. Acta*, 2006, **1763**, 747–758.
- 55 I. Fridovich, *Annu. Rev. Biochem.*, 1995, **64**, 97–112.
- 56 L. O. Gaiunkam, L. Huang, V. Caveliers, M. Keyaerts, S. Hernot, I. Vaneycken, C. Vanhove, H. Revets, P. De Baetselier and T. Lahoutte, *J. Nucl. Med.*, 2008, **49**, 788–795.
- 57 A. Gschwind, O. M. Fischer and A. Ullrich, *Nat. Rev. Cancer*, 2004, **4**, 361–370.
- 58 J. Havlickova, H. Medova, T. Vitha, J. Kotek, I. Cisarova and P. Hermann, *Dalton Trans.*, 2008, 5378–5386.
- 59 K. J. Heroux, K. S. Woodin, D. J. Tranchemontagne, P. C. Widger, E. Southwick, E. H. Wong, G. R. Weisman, S. A. Tomellini, T. J. Wadas, C. J. Anderson, S. Kassel, J. A. Golen and A. L. Rheingold, *Dalton Trans.*, 2007, 2150–2162.
- 60 R. Ferdani, D. J. Stigers, A. L. Fiamengo, L. H. Wei, B. T. Y. Li, J. A. Golen, A. L. Rheingold, G. R. Weisman, E. H. Wong and C. J. Anderson, *Dalton Trans.*, 2012, **41**, 1938–1950.
- 61 R. Rakhit and A. Chakrabarty, *Biochim. Biophys. Acta*, 2006, **1762**, 1025–1037.
- 62 S. Chevreux, I. Llorens, P. L. Solari, S. Roudeau, G. Deves, A. Carmona, D. Testemale, J. L. Hazemann and R. Ortega, *Electrophoresis*, 2012, **33**, 1276–1281.
- 63 M. Sato and J. D. Gitlin, *J. Biol. Chem.*, 1991, **266**, 5128–5134.
- 64 J. M. Lafky, J. A. Wilken, A. T. Baron and N. J. Maihle, *Biochim. Biophys. Acta*, 2008, **1785**, 232–265.
- 65 R. J. Motekaitis, B. E. Rogers, D. E. Reichert, A. E. Martell and M. J. Welch, *Inorg. Chem.*, 1996, **35**, 3821–3827.
- 66 R. Delgado and J. J. da Silva, *Talanta*, 1982, **29**, 815–822.
- 67 B. E. Rogers, C. J. Anderson, J. M. Connett, L. W. Guo, W. B. Edwards, E. L. Sherman, K. R. Zinn and M. J. Welch, *Bioconjugate Chem.*, 1996, **7**, 511–522.
- 68 G. A. Bottomley, I. J. Clark, I. I. Creaser, L. M. Engelhardt, R. J. Geue, K. S. Hagen, J. M. Harrowfield, G. A. Lawrance, P. A. Lay, A. M. Sargeson, A. J. See, B. W. Skelton, A. H. White and F. R. Wilner, *Aust. J. Chem.*, 1994, **47**, 143–179.
- 69 S. Thieme, M. Walther, H. J. Pietzsch, J. Henniger, S. Preusche, P. Mading and J. Steinbach, *Appl. Radiat. Isot.*, 2012, **70**, 602–608.
- 70 K. Zarschler, S. Witecy, F. Kappusch, C. Foerster and H. Stephan, *Microb. Cell. Fact.*, 2013, **12**, 97.

